



February 1995

Reflections

Save Our Heritage Organisation



Photo by Bob Broms

Adobe Chapel Re-dedicated

In a moving ceremony before an overflow audience on a crisp wintry afternoon, Bishop Robert H. Brom re-dedicated the historic St. Francis adobe chapel in Warner's Springs, thus marking the completion of an ambitious repair and restoration project by a team of volunteers brought together by SOHO.

The structure has been badly damaged by both rain and time. The volunteers - a working mix of architects, planners, historians, educators, craftsmen and other interested individuals - rebuilt a wall, repaired and strengthened the bell tower, and shored up the roof with new timbers. For the wall, new adobe bricks had to be made, laid in place, and whitewashed.

The re-dedication services on January 22 mean that the chapel is again available for use by parishioners from Warner's Ranch and the nearby reservations. Architect Wayne Donaldson and his wife Nancy, SOHO president Vonn Marie May, with grandson Benjamin, Alana and Bruce Coons, and Bob Broms - some of the SOHO members who worked on the project - joined the more than 100 others who attended the event.

La Mesa Trolley Tour

On Saturday February 11, SOHO will retrace the route of the 1880's built San Diego, Cuyamaca & Eastern Railroad to La Mesa on the trolley. Originally a citrus ranching community known as Allison Springs, La Mesa served as the base of operations for the construction of the railroad to the El Cajon Valley and beyond. The railroad was instrumental in transporting material for building La Mesa, leading ultimately to its incorporation as a city in 1912.

Highlights of this event will be guided tours of the 1894 La Mesa Depot with its static train display, and the 1908 Rev. Henry A. McKinney house museum, home of the La Mesa Historical Society.

The tour will begin promptly at 10 AM (rain or shine) at the Gaslamp Quarter trolley station at the foot of 5th Avenue and L Street. Off-street parking (\$2.00 all day) is available close to the trolley station. We will be returning to San Diego between 3-4 PM.

The tour will cost \$20.00 per person, tickets are available from SOHO and on the day of the event. Early registrants are offered discounted tickets. These are \$15.00 if purchased from SOHO by February 6th. Mail \$15.00 per person to SOHO, P. O. Box 3571, San Diego, CA 92163.

If you have any questions, please call tour director Alex Bevil at 569-1486, or SOHO at 297-9327.

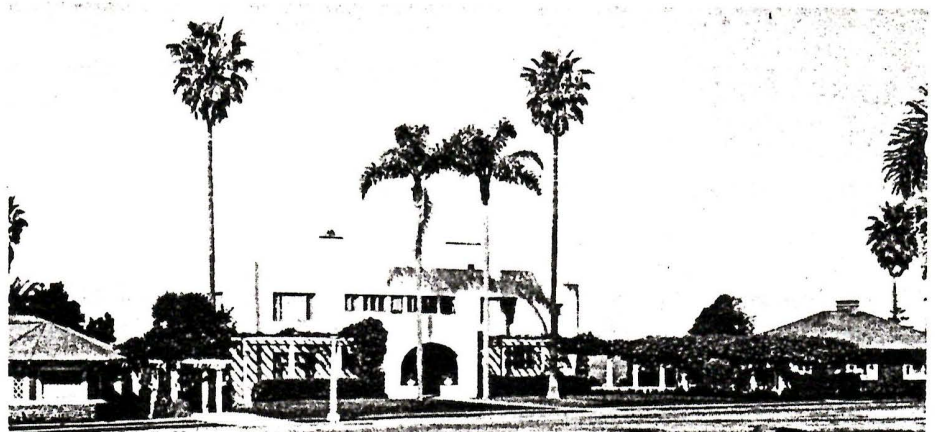
President's Message
Vonn Marie May

Welcome 1995, five years short of the turn of the century, better yet the end/beginning of a millenia. It's hard to imagine that someday we will be looked back on as those dedicated "late twentieth-century preservationists" who fought hard to save the remnants of Americana i.e. World War II, neighborhood bungalow vernacular, and back country adobes. We have been relatively successful protecting San Diego's late nineteenth century legacy with Heritage Park, the Gaslamp Quarter, Sherman Heights, Golden Hill, Banker's Hill, and Cortez Hill. San Diego's Victorian past of grand vertical euro-centric structures that made it all the way to California. I wonder what century-old structures that made it all the way west to California. I wonder what century-old structures they will want to save in the late 21st Century. And what will they prefer then? Post Modern (Horton Plaza), Neo-neo-classical (Aventine), or the unique styles of local architects Grondona and Quigley? Or perhaps naive architecture i.e. adobes, and cliff dwellings, that will have become even more cherished and rare?

seeing an old friend. One could see where the portico for the entry was attached at one time and where each window frame was. Gone was the Irving Gill arcade, the Kate Sessions's Queen Palms and the rest of the signature setting, however the new project plan promises to restore and incorporate the resident facade within the entire street elevation. It was touching to be able to see her home that much intact, the woman who, in relative terms, was probably San Diego's most generous and caring philanthropists.

The New Year will bring a continuation of our " Cross Border" series. SOHO has had an early interest in the shared heritage of Baja and Alta Californias and now more than ever we are in a position to heal the wounds of the latest divisive round between the two. Approaching our panel discussions with the intent to enlighten the public of our cultural affinities is SOHO's way of pursuing a subtle diplomacy through education and research. Happy New Year!

I was driving along Prospect Drive in La Jolla the other day and went by the construction site of the San Diego (formally La Jolla) Contemporary Art Museum. I first noticed with sadness the absence of the beautiful mature California Sycamores in the front but there beaming in the sun was Ellen B. Scripps residence exposed and liberated for the first time in decades. It looked surprisingly familiar even peeled back and defrocked, like



Ellen Browning Scripps Home, La Jolla 1915

SOHO
Save Our Heritage Organisation

Board of Directors

President
Vonn Marie May

Vice President
Janice Fahey

Secretary / Relections Editor
Ingrid Helton

Directors
Alex Bevil
Robert Broms
Stuart Fromson
Erik Hanson
Paul Johnson
Ralph Lewin
Ronald May
James Royle
Jeffrey Shorn
David Swarens

Executive Director
Al Alferos

Reflections is published by:
Save Our Heritage Organisation
P.O. Box 3571
San Diego, CA 92163
(619) 297-9327

SOHO, a non-profit corporation dedicated to preservation of historic and cultural resources, is a member of:
National Trust for Historic Preservation
California Preservation Foundation
San Diego Historical Society



Save Our Heritage Organisation

The 1995 People in Preservation Awards

Call for Nominations

Each year the Save Our Heritage Organisation Celebrates the best of preservation by presenting People in Preservation Awards to individuals and organizations whose projects demonstrate outstanding dedication and commitment to excellence in historic preservation.

The People in Preservation Awards recognize exceptional accomplishment in preservation, rehabilitation, restoration and interpretation of our architectural and cultural heritage.

SOHO pays tribute to its award recipients and applauds their accomplishments at a special program during National Preservation Week, 7-13 May.

SOHO invites you to participate in the celebration by nominating those individuals you believe are the most deserving of a People in Preservation Award.

The 1995 People in Preservation

Nomination Form (Please type or print clearly)

Nominee: _____
Address _____

Contact Person _____
Telephone _____

Nomination Submitted by: _____
Organization _____
Address _____

Telephone _____

Reasons for Nomination: _____

Brief Description of Work Acheived: _____

Historical Significance of Nomination: _____

List Exhibits Presented in Support of the Nomination:
(Note! nomination materials will only be returned if stamped self- addressed envelope is included)

Send completed nomination forms and exhibits to:

SOHO, P.O. Box 3571, San Diego, CA 92163. Nominations must be received by 31 March 1995

Workshop on Historic Transportation Corridors Held

The 25 participants in a January 19 SOHO-sponsored workshop were treated to a wide reaching and informative discussion on historic transportation corridors by a well-versed panel of speakers.

Alex Bevil, historian and SOHO board member started the session with an overview and orientation of the railroads of San Diego County as historic transportation corridors. Dena Kamporlides, Ph. D. historian with Tetra Tech, Inc. an engineering firm in San Bernardino, talked on linear resources. She touched on the history of US Route 66 and its importance in the migration to the west. In explaining how the term "out west" was always changing as people migrated farther this way from the East and Midwest on Route 66, she said at one time the state of Illinois was considered to be in the West.

Larry Cohen, council representative to City of San Diego Deputy Mayor Juan Vargas, recalled how Vargas, after comparing the high-level of activity at the port of Seattle with the low activity at the port of San Diego, concluded that the difference between

the two ports is accessibility to railroad lines. Seattle has it; San Diego does not. This sparked his interest in re-opening the San Diego & Arizona Eastern Line. Dave Schumacher, senior transportation planner with the Metropolitan Transportation Board (MTDB) spoke of MTDB's role in planning for the region's future transportation needs.

The three hour workshop was held in the Rose-Robinson building in Old Town. SOHO board members Bob Broms and Jim Royle served as moderators for this latest in a series of meetings which originated in 1992 with the goal to provide an ongoing forum where area planning jurisdictions could send commission members and staff to discuss issues of common interest. The State Office of Historic Preservation now approves the series for continuing education credits for participants from certified local governments.

As a token of appreciation, Royle and Broms presented SOHO 25th Anniversary commemorative t-shirts to the speakers.

Art Exhibit Opens

The newly-opened California Center For the Arts Museum in Escondido is now presenting an exhibit entitled "Revisiting Landscape". The exhibit runs through May 7, and features contemporary landscape works, California *plein air* paintings from the early 1900's, and American arts and crafts pieces from such sources as the collection's of George and Connie Beardsley, the Oakland Museum, and the San Diego Historical Society.

The museum hours are Tuesday to Saturday, 10 AM to 5 PM, Sunday, noon to 5 PM, closed Mondays and Major holidays. The museum is located at 340 North Escondido Blvd. in Escondido. The telephone number is 738-4120.

SOHO Rail Tour to Los Angeles Landmarks

On Saturday, May 6 SOHO will offer an all-day rail excursion to Los Angeles. Highlights of this event will be travelling along the historic 1888 coastal route of the Santa Fe Railroad, past a number of restored train depots.

Once in Los Angeles, we will utilize the modern subway in order to visit a number of LA's historic landmarks. Included will be the 1893 Bradbury Building, LA's only commercial building on the National Register, the Mediterranean Renaissance 1922-28 Biltmore Hotel, the 1928 Oviatt Building, designed by LA's G. Goodhue and Carlton M. Winslow's 1926 allegorical cathedral to learning, the Los Angeles Public Library, and the Spanish Colonial Revival/Moderne 1934-38 Union Passenger Terminal.

The Tour will begin promptly at 8.50 AM (rain or shine) at the Oceanside Transportation Terminal, 235 S. Tremont St. Free parking is available adjacent to the center. We will arrive in Los Angeles at 11.45 AM and depart at 4.45 PM arriving back in Oceanside at 6.39 PM.

Tickets for the tour are available by reservation from SOHO. Mail \$60.00 per adult, \$40.00 per child 15 years and under, to SOHO, Attn. LA Train Excursion, P.O. Box 3571, San Diego, CA 92163. Mail in reservations will be taken until April 21, there will be no tickets available on the day of the event. If you have any questions call tour director Alex Bevil at 569-1486 or SOHO at 297-9327.



Member News

Thanks.....to Deirdre Lee and Lee Shouse who so graciously opened up their home for SOHO's annual Holiday Party on Dec. 11. In a setting filled with holiday music and seasonal decorations a cozy gathering enjoyed an array of specialty dishes, appetizers, and beverages sprinkled with animated chit-chat and only occasional serious discussion.

SOHO salutes the following members for their longtime support:

20 Years

Mr. and Mrs. Peter Norton

15 Years

Janet Backer

Meg and Calvin Bowman

David Goldberg

Mary Joralmon

David and Michele Lowenstein

F.N. and Sarah Spiess

10 Years

Stephen Boeh

David P. Kuivanen, AIA

Deirdre Lee and Lee Shouse

Jim and Jerry Ray

5 Years

Roger Nulton

Oops...in the last newsletter the name of new member Terry Hecker was misspelled. Sorry, Terry!

Did you know that.....???

SOHO president (1988-89) Robin Webster, and her husband Bryan, are expecting their first child in May.....

SOHO president (1991 -92) Suzanne Lawrence, has been appointed Field Representative in the San Diego office of State Assemblywomen Susan Davis.

John Hartley has formally announced his candidacy for the '96 City of San Diego mayoral race....

Charles Sykes, SOHO treasurer for many years, is now Assistant Vice President and Manager of Bank of America-Mission Valley branch.

Calendar of Events

February

11: La Mesa Trolley Tour.... See article for details.

22: SOHO Board Meeting, Senlis Cottage, Heritage Park 6.30 PM

Now through May 7: "Revisiting Landscape" Art Exhibit at the California Center for the Arts, Escondido. Info 738-4120

March

3,4,5: From Mules to Missiles, a conference sponsored by the Congress of History and the Chula Vista Historical Society. Info 444-3391

15: Newsletter Deadline...Mail articles to SOHO.

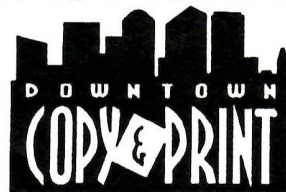
21: SOHO Board Meeting, Senlis Cottage, Heritage Park, 6.30 PM

Leona Sabulsky
Manager

1815 Fifth Avenue
San Diego, CA 92101

232 - COPY
(232 - 2679)

FAX 232 - 7033



Save Our Heritage Organisation
P.O. Box 3571
San Diego California 92163

NON PROFIT
ORGANIZATION
U.S. Postage
PAID
San Diego, CA
PERMIT 984