



# Reflections

March 1993

Save Our Heritage Organisation

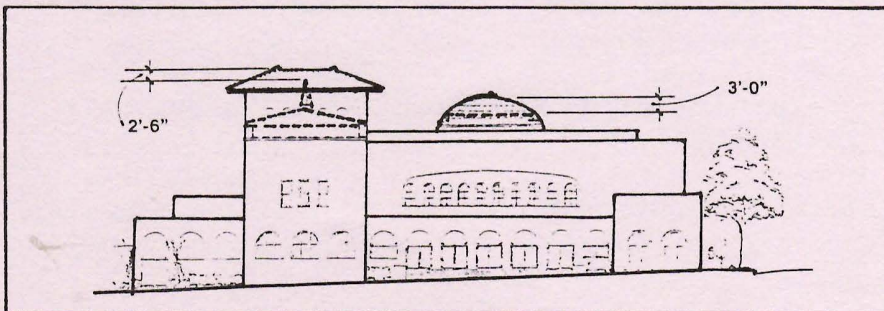
## Gill Church Awaiting City Approval

The First Church of Christ Scientist San Diego, located at Second and Laurel, may at last lose its 1950's facelift if the City of San Diego approves plans for renovation. The Church, designed by Irving Gill in 1909, was altered in the 1950's. Now, church members wish to bring back architect Gill's original plan.

The renovation by Bokal Kelly-Markham Architects will bring back crucial Gill features including the tower along Second Avenue, the arcade, and the domes designed by the noted W. H. Judson Art Glass Company of Los Angeles. In order to proceed with renovation, a variance from the City's Airport Approach Overlay Zone is required. This zone controls height near Lindbergh Field. A Mid-City Development Permit is also sought so that the tower can be rebuilt at the property line. Encouragement and support has come from SOHO, the Uptown Planners, the AIA's Special Interest Group, and Gill researcher and author, Bruce Kamerling.

1993 is the 100th anniversary of Gill's arrival in San Diego. This city has not been kind to his architectural legacy. Now the city has an opportunity to reverse such a trend and recognize and support the renovation of the First Church of Christ Scientist. We hope they do!

Editor's note: O.K. SOHO members - now is the time to write and voice your opinion on this outstanding project! Write to: Corey Braun, Planning Dept., City of San Diego, 202 C Street, San Diego CA 92101.



Drawing of the First Church of Christ Scientist

## '93 People In Preservation Awards

Call for Nominations

The 1993 People In Preservation Awards will be presented by SOHO during National Preservation Week, 9-15 May. The national theme for this year is "*Preservation & Livable Communities.*"

A nomination form for this annual SOHO event is included inside. The location and date of the event and other details will follow in a special mailing to members.

## News Flash...Easton Hearing Postponed

At the request of attorney Marie Burke Lia, representing the owner, a Mar. 24 hearing on SOHO's application to have the Easton Bungalow designated a historic site has been continued until the Apr. 28 meeting of the San Diego Historical Site Board.

SOHO, over the objection of the owner, a lending institution, is nominating this 1911 bungalow because it represents a notable work by master architect Emmor Brooke Weaver, because of the prominence of its original owner, Jane Easton, and because of other standing criteria. The bungalow sits on property that was listed for sale as "land only," and is threatened with demolition unless SOHO's efforts are successful. Call the office for details.



---

---

# Babcock Court to be Demolished

Paul W. Johnson

## *Bulldozers are warming up their engines*

Despite vocal support for the preservation of Babcock Court, the Coronado City Council recently voted to pursue the demolition of the National Register bungalow court, to allow for the construction of a new police facility. In doing so, the Council ignored personal pleas from numerous historians, architects, attorneys, as well as formal letters of support from :

- Save Our Heritage Organisation
- American Institute of Architects, San Diego Chapter
- Coronado Historical Association
- San Diego Historical Society
- C-3
- San Diego County Historical Site Board
- Calif. Preservation Foundation
- California State Office of Historical Preservation
- State Historical Building Safety Board
- California Historic Resources Commission
- United States Department of the Interior

### *Reflections*

Celebrating 23 years  
of preservation services  
in San Diego County.

#### BOARD OF DIRECTORS

President  
**Robert Broms**

Vice President  
**Paul Johnson**

Secretary/Treasurer  
**Corey Jon Braun**

Directors  
**Margaret Elliot**  
**Nick Fintzelberg**  
**Suzanne Lawrence**  
**Anna Major**  
**Ron May**  
**Dale O'Day Robison**  
**Kathleen Stoughton**  
**David Swarens**

Executive Director  
**Al Alferos**

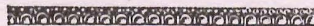
*Reflections* is published by:

Save Our Heritage Organisation  
P.O. Box 3571  
San Diego California 92163  
(619)297-9327

A non-profit organization dedicated  
to the preservation of cultural  
resources. SOHO is a member of:

- National Trust For Historic Preservation
- California Preservation Foundation
- San Diego Historical Society

Additionally, the Coronado Historical Society demonstrated an alternative, publicly owned site for the police facility that would result in more efficient use of land and provide improved emergency response. The City of Coronado is currently under way with H.A.B.S. (Historic American Building Survey) drawings, which will photographically and graphically document the buildings, before their demolition. The bulldozers are waiting in the wings, warming up their engines!!!



## ANNUAL CPF CONFERENCE SET FOR LONG BEACH

The 1993 annual conference sponsored by California Preservation Foundation is set for June 3-6, 1993, in Long Beach, California.

The central theme of the conference is "CELEBRATE DIVERSITY - COMMUNITIES UNITED FOR THE FUTURE."

Sessions will be held in many historic sites, and Long Beach's two adobe ranchos - Rancho Los Alamitos and Rancho Los Cerritos - will be open for pre and post conference tours.

For registration information, call CPF at (510)763-0972.





Sponsored by SOHO  
Save Our Heritage Organisation

April 10, 1993  
10 a.m. & 1 p.m.

Around the turn of the century, many bankers and other well-to-do families moved to an area of Uptown which would be coined Banker's Hill. They built beautiful Victorian homes with polished hardwood, stained glass and adjacent carriage houses. We will tour the survivors and view some interiors rarely seen by the public.

### **Easter Treasure Hunt for Hidden Gems of a Century Ago.**

Meet at the South West Corner of 5th & Maple.

\$10 per person  
SOHO members \$7.50

For reservations or information:  
Call 297-9327 or  
Mail money & time preference to  
SOHO

P.O. Box 3571, SD 92163

*Space is limited.*



# The President's Column: A Metaphor with a Message

In writing this editorial column discussing the process of historic preservation as an academic discipline and public policy, I have found myself musing on the idea of a "column." As a student of architecture, I go to the root of the various derived meanings, the primary reality of the structural element itself. The constructed support member was named by analogy to the Latin word for "hill," collis, related to columen or culmen, "top." (Compare the modern English "culmination".) Thus the conceptual source of our term for a vertical arrangement of words on a page is the idea of an elevated area. Not only does "form follow function" in the broadest sense in architecture, as taught by Luis Sullivan and others, but the forms are indeed named after their functions. In the case of the column, it is, literally, that which supports the top. And this "top" or elevated portion in fact the most important constituent of "shelter" as a purposeful geometry from the cave to the condominium.

As the preceding paragraph can be compared to the capital of a column, so each of these next several paragraphs can be considered the drums which comprise the shaft. The capital of course is the primary identifying characteristic of the type of column. In the present instance we would be said to be engaged in an endeavor in the analytical style rather than the Doric, Descriptive, Ionic, Philosophical, Corinthian, Humorous, or Composite. And our series of columns can constitute a public forum, a modern stoa for the exchange of ideas. While our common challenge is to preserve the historical identities of our individual communities, the interactions among those who must co-operate to achieve ongoing conservation of our cultural resources fall into two broad categories. The primary activities are educational efforts among the public and direct intervention in the fate of particular structures.

SOHO is widely recognized as expert at orchestrating the drumbeat of education. Two recent examples come to mind. Since mid-January, we have been involved in discussion with the Special Projects Division of the City of San Diego's Department of Parks and Recreation aimed at creating an evaluation and information program for the historical fabric of Balboa Park. In early February, we met with members of the El Cajon Historical Society to provide background on historic preservation practices in other jurisdictions. A workshop for historic preservation officials and commissions from throughout the county occurred in mid-February.

Upcoming are a variety of events. Tentatively set for March is a forum on paint analysis. In the works for April 10th is a special tour featuring interiors of residences from the late Nineteenth Century in the Bankers Hill Area. Starting April 24th will be a five-week sequence of tours and community discussions in co-operation with the California Council of the Humanities. Tours will include La Jolla, Sherman Heights, and the Gaslamp. During National Historic Preservation Week, SOHO's People in Preservation Awards Banquet will take place during National Preservation Week, May 9-15.





(ed. note. Bob Broms "zooms in" on artifacts on the site of the Green Dragon Colony. Photo Yi-chrng Liu.)

While education events are usually planned well in advance, direct preservation methods cover the range from instantaneous reactions to the vagaries of nature at one extreme to long-term projects at the other. The first is seen in the valiant efforts of Kathie Graler and her volunteers to recover elements of Camp Pendleton's 1810 Ranch House Chapel that were swept away in the recent flooding. Long-term projects include architect Jim Kelly-Markham's plans for Irving Gill's 1909 First Church of Christ, Scientist, locally and the National Park Services work on the Lincoln and Jefferson Memorials. The middle-ground of the spectrum is concerned less with the inexorable forces of nature and more with the effects of the workings of human nature. The local AIA chapter's Buildings at Risk survey, spearheaded by our own Paul W. Johnson, is an attempt to close gaps in that continuum of effort from spontaneous reaction to strategic proaction.

Specific examples of buildings being forced to meet fate head-on fill the time period from 50 to 100 years ago. La Jolla's Green Dragon Colony has recently made a transition to the next phase of its history. The T. M. Cobb building, William S Hebbard's Clemens Warehouse of 1894 is still imperiled by an unsettled policy of the City of San Diego toward its living treasury of nostalgia, the Gaslamp National Historic District. Back in La Jolla, Emmor Brooke Weaver's Easton-Mertz House (c. 1907), a craftsman evolutionary leap in the transformation from hacienda to ranch style, is looking for a savior to move it offsite. With comments still coming in on its E.I.R., the House of Charm (1915) continues to be a source of controversy. And back in La Jolla, once more, Harwell Hamilton Harris 1942 masterpiece, the Lek house, faces demolition because those involved in the planning process could not see the historic value in a residence on the Modern persuasion, despite its having reached the 50 year age of maturity under California law.

Finally, we come to the base of the column. The trunk of the tree that formed the archetype and substance of the first column here begins to spread out into its root system. The capital symbolizes the sheltering crown, an argoeal legacy. The base indicates the sustaining matrix of the earth. In the analogy to historic preservation, the crown, the shelter, is the living built environment we preserve for future generations, and the roots are the volunteers who work continually to provide the nutrients that ensure a sturdy shaft of policy and practice. The nutrients are time, expertise, and money. The volunteers, the roots, must be each of us.

---- Bob Broms



## Heritage Park Bed & Breakfast Expansion

**N**ancy and Charles Helsper came to buy a bed and bought the Inn! Last February, these Mission Hills residents heard about an estate sale being conducted at Heritage Park Bed & Breakfast Inn. They contacted the owners and made an offer to purchase the entire business. The rest, as they say, is history.

They took a faltering business and made many changes. The first was to reconvert an existing bedroom next to the parlor back into a dining room. This greatly increased the common space used by the guests and returned the stately Queen Anne to its original elegance. Next, they moved breakfast out of the guest rooms into the dining room and onto the sunny veranda, weather permitting. Now, guests to Heritage Park Bed & Breakfast get to fully experience a bed and breakfast as it was meant to be.

### *Open To Visitors*

Fresh paint, new linens, heavy drapes removed from windows - all contributed to the new sunny and bright look of the Inn. Nancy and Charles also felt strongly that all visitors to the park should have an opportunity to see this restored Victorian mansion and so they opened the doors to the Inn midday. The Innkeepers answer questions about the building and how it came to be in Heritage Park.

In October, the couple decided to expand to the Bushyhead House. They completely renovated the lower floor and now have it available for private parties, weddings, fund-raisers, meetings, seminars, breakfasts and luncheons. Soft pink moiré wallpaper, refinished wooden flooring and fresh lace curtains all add to the ambiance of this new banquet facility in the park.

Tea was once reserved for the upper classes who had time on their hands. Nowadays, it's the opposite. We're so busy that we take tea to escape from the pressure and the fast pace, especially when someone invites, "On, do come for tea..." Heritage Park Bed & Breakfast Inn now offers you an excuse to linger! Afternoon Tea - that wonderful Old World afternoon luxury - can now be enjoyed at the Inn. On Saturdays and Sundays from 11:00 am to

4:00ish you can stop by for a cup of freshly brewed tea. Private teas can be arranged for groups Monday through Friday.

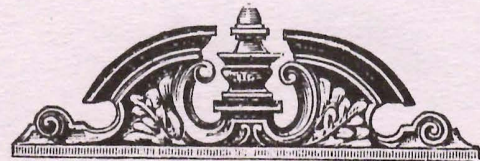
### *Teddy Bear Teas*

In February, the couple began their "Teddy Bear Teas". This is an opportunity for Mothers and Grandmothers to bring their favorite little girl (or boy) to the Inn for tea. There is a large steamer trunk filled with hats, gloves, scarves and jewelry for the children to dress up. The fancy sandwiches are stuffed with peanut butter and jelly. The children are encouraged to bring their favorite stuffed animal to tea. A photo is taken as a keepsake of their tea party.

### *Accommodations For Families*

The last phase of the expansion of the Inn is the upper floor of the Bushyhead House which will be transformed into two large suites to accommodate families who would like to stay at the Inn.

Nancy and Charles are more than tenants in Heritage Park. They believe in sharing the history with San Diegans and visitors alike. They have made a commitment to Heritage Park and are proud to be able to contribute to the reawakening of Heritage Park!



### *Office Equipment Donations*

Special thanks to **Robi Robison** and the CIR Division of Science Applications International Corporation (SAIC) for their donation of an IBM PC. However, we are in need of a compatible printer to get us up and running.

A special SOHO thanks also to **Kathleen Kelly-Markham** for donation of a Brother's electric typewriter.



## Member News

SOHO salutes:

20-year members **Marilynn and Robbins Crehore, Nancy Fitzpatrick, Ethel Greene, Margaret MacGregor, Loretta Matters, and Ramola McKenney** for their continued support of preservation...

**Architects Lorimer/Case** who recently renewed their corporate membership...

**Miss Grace Moran** who celebrated her 88th birthday on 18 March...

**Claire Kaplin, Cia Baron and Judy McCutcheon** who recently rejoined the SOHO family...

New members -

**Nancy and Charles Helsper**, innkeepers who are breathing new life into the Heritage Park Bed & Breakfast Inn...

**Ellen La Place**, new arrival to San Diego with an educational background in planning and historic preservation. Ellen already is busy at work as a SOHO volunteer on special projects...

**Lori Anne Peoples**, re-elected as Clerk of the City of National City in November, and a major force in the drive to save the Stein Farm...

**National City Living History Farm**, the ambitious group that worked so hard to save and preserve the Stein Farm...

Other new members -

**Barbara Baggette  
Rosalind Burkhart  
Mrs. John Cole  
Beverly Kluger  
Ron McMullin  
Sharon Peterson  
Jean & Don Roth  
Alicia Ryden  
Robert & Patricia Teaze  
Karin Winner**

SOHO welcomes all of the new members and thanks them for their show of interest in saving our historic landmarks and educating others as to the importance of preserving our cultural resources.

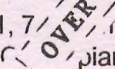
SOHO also wishes to acknowledge and thank the many members who renewed their membership "early" during a fundraising and membership drive.

**VOLUNTEERS NEEDED...** Do you have a few hours a week that you can spare for SOHO? Volunteers are needed in the office to answer telephones, greet visitors, and do light clerical work. If you are interested in this or any other volunteer position call the office, 297-9327.



## Chamber Music at Granger Hall

The National City Historical Society has announced the schedule for a series of chamber music programs at the historic Granger Hall in National City.

• March 21, 7:00 p.m. John Walz, cello and Edith  piano.

• April 25, 7:00 p.m. Jazz/chamber music featuring Mike Wofford on piano, Bob Magnusson on bass, and Mary Karo on violin.

• May 23, 7:00 p.m. Violinist Yoko Matsuda and pianist Daniel Shulman.

For information, call 660-8184 or 447-3451.

## SOHO Membership Application

Membership privileges include the newsletter *Reflections* to keep you informed of preservation issues and activities, as well as special prices for SOHO workshops, tours and related activities and events.

Please call the SOHO office (297-9327) for more information. To apply for membership, complete the following form and send it and your check to SOHO, P.O. Box 3571, San Diego, CA 92163.

**Thank You For Your Support!**

### Membership Categories

- \$1000 Lifetime  
 500 Benefactor  
 250 Corporate  
 100 Executive  
 50 Professional  
 25 Individual/Family  
 10 Student

Name \_\_\_\_\_

Address \_\_\_\_\_

City, State, Zip \_\_\_\_\_

Phone (H) \_\_\_\_\_ (W) \_\_\_\_\_

Yes, please send information on SOHO' Planned Giving Program

I would like to help with:  Tours  Newsletter  Office  Membership  Workshops  Other  
 You will be contacted regarding your choice(s).



*Specializing in Historical Homes*



PARK WEST  
REAL ESTATE  
CORPORATION  
1000 W WASHINGTON ST  
SAN DIEGO, CA 92103-1896

**Jane Haro**  
BUS. (619) 299-8020  
RES. (619) 298-3284  
FAX: (619) 299-4406



a gallery • art & collectibles for the home

Suzanne Fitzpatrick  
(619) 435-0113

841 Orange Ave Coronado, Ca 92118

(619) 299-6832

**NANCY HELSPER**

Inkeeper/Consultant



Heritage Park  
Bed & Breakfast Inn

2470 Heritage Park Row  
San Diego, California 92110

(800) 995-2470

FAX: (619) 299-9465

**Your business card here...**

**For all to see!**

*only* \$25.00

Call 297-9327 for rates of  
other ad sizes.

*Hallen Restoration*

*Gina Hallen*

*619 543-9119*



**JACQUOLINE  
WILLIAMS** *Alms*

THE BIGLEY GROUP REAL ESTATE BROKERAGE  
7851 MISSION CENTER COURT #302  
SAN DIEGO, CA 92108

(619) 297-2800 OFFICE ■ 234-1440 HOME ■ 493-7094 PAGER



Save Our Heritage Organisation  
P.O. Box 3571  
San Diego, California 92163

NON PROFIT  
ORGANIZATION  
U.S. Postage  
PAID  
San Diego, CA  
PERMIT NO. 984