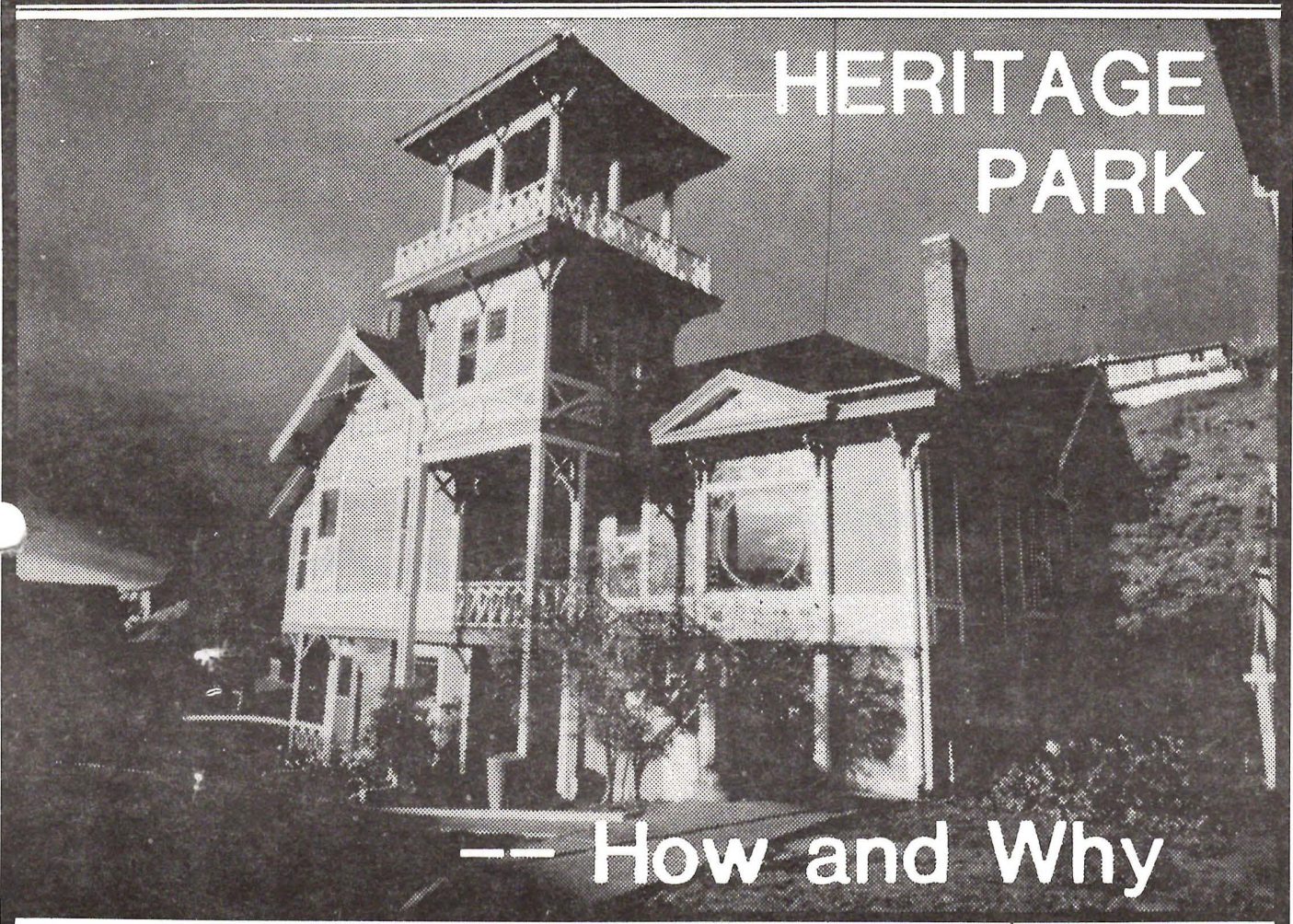




# REFLECTIONS

THE S.O.H.O NEWSLETTER

JANUARY 1984 Vol. XVI No. 1



## HERITAGE PARK

### -- How and Why

Happy New Year, SOHO!  
This Is Your Life!

Your story will be retold at 4pm on  
Saturday 21 January at the Reuben H.  
Fleet Space Theatre in Balboa Park.

<b>IN THIS ISSUE:</b>	
President's Message/ Joralmon	p.2
Neighborhood Network/ Grigsby	p.2
Invitation to Slideshow	p.3
Historic Site Board Decisions	p.4
Plan Horton Plaza Park/ CCDC	p.5
Protecting 20th Century N'hoods	p.6

We hope you can come; your invitation is enclosed in this issue.

We remember how you were born. The Sherman-Gilbert House was threatened with destruction. You worked hard to raise the funds to move the building from its site. You never knew if you would have enough time, or if you could find a new home.

We recount the struggle, and the proud moments too. You went on to new battles.

You know the work of preservation never ends.

# PRESIDENT'S MESSAGE

The Fight's not over yet!

In 1977 we thought the historic, beautiful HORTON PLAZA AND FOUNTAIN which grace our downtown were finally rescued and renewed to their original condition, with a gracious green space, a formal park to enhance the surrounding buildings.

Enter downtown developer Ernest Hahn, et al. Somehow this unique space, eligible for the National Register, does not quite fit in with his overall shopping mall plan.

We must rally round the park again and educate developers that indeed if they want something special in the way of a shopping mall—a drawing card as it were—then they must be made to realize that historic structures lend that very special quality and uniqueness they strive to effect.

CCDC is having 2 special meetings in January and February (see next page). Make sure to come and make SOHO's presence felt.

SOHO BOARD MEETING: 9 January, 7pm  
at the Senlis Cottage, Heritage Park

## Countywide Neighborhood Network

In an effort to preserve the existing character of San Diego County's neighborhoods, SOHO is attempting to bring neighborhoods together to share similar problems, concerns, and goals. A SOHO-initiated NEIGHBORHOOD NETWORK would hopefully help different neighborhood residents develop more awareness of their neighborhood's special character and the value of their historic landmarks to that ambiance.

Some basic goals of such a county network would be to:

1. Emphasize the benefits of historic preservation for the neighborhoods
2. Protect neighborhoods from irresponsible and insensitive development
3. Show steps that can be taken by local leaders to preserve local historic landmarks
4. Develop and disseminate information regarding publications and knowledgeable people who can be contacted for help or more information
5. Develop a feeling that preservation can be accomplished through unified action

6. Target dangerous areas where rapid development is taking place or where there are signs of deterioration
7. Define neighborhood areas.

What is SOHO's role in this network process? SOHO would act as a catalyst and bring community leaders together to implement a network. SOHO is inviting the more active members of county communities to its January General Meeting to give them a feeling of SOHO's goals and to provide an initial meeting with each other. We plan to have a General Meeting specifically geared to set up a network soon after—in early spring.

SOHO public speakers can also spread an awareness of the value of neighborhood preservation. At this point I'm trying to gather a nucleus of interested souls unafraid to speak to community groups. If you are INTERESTED IN SERVING AS A SOHO NEIGHBORHOOD NETWORK SPEAKER, please call me (Cathy Grigsby) at 588-1802 or SOHO at 297-9327.

Also, if you know of neighborhood organizations which would like such a speaker to discuss networking and/or local historic preservation for their group, please give me a call. Have answering machine, will travel. --Cathy Grigsby

# NEW OFFICERS

President	Mary Joralmon
Executive V.P.	Gwen McFarland
VP of Governmental Affairs	Michael Sullivan
V.P. of Education	Bruce Herms
Secretary	Nancy Roberts
Treasurer	David Goldberg

BOARD MEMBERS, 1984 (2 year terms)

Michael Sullivan	Nancy Roberts
Mary Joralmon	Karen Johl
Diane Schade	Bruce Herms
Bill Bolen	

BOARD MEMBERS (returning, 1 year)

Gwen McFarland	Eleanor Bolen
Carol Heepke	Cathy Grigsby
David Goldberg	David Hutchinson
Judy McCutcheon	Claire Kaplan

ALTERNATES

Paula Stober	Susan Houston
	Pat Schaelchlin





YOU ARE  
INVITED

Please join with Save Our Heritage Organisation  
as we review our past . . . and plan our future

**Heritage Park –  
How and Why**

–The story of creating  
a Victorian preserve

**Preserving  
San Diego Memories**

–Other SOHO projects

Premiere Showing of Dual Multi-Media Program  
Narrated by Talk Show Host Bill Ballance

4 p.m., Saturday, January 21, 1984  
Community Room, Reuben H. Fleet Space Theater  
Balboa Park

Free admission. Public invited, so bring your friends.  
Best parking behind Space Theater, off Park Boulevard.

FUNDS SOUGHT TO REPAIR  
THE STATUE OF LIBERTY  
--by B.F. Herms

A special commission has been established to save the Statue of Liberty. It is headed up by the wonderman of US auto industry, Lee Iacocca, whose own grandparents were greeted by this grand lady when they came from Italy to America.

Financial support for this major restoration project is desperately needed. Just as the people of France reached into their pockets a hundred years ago to make this symbol possible, the people of America are being asked to reach into their pockets to keep this symbol standing for coming generations to contemplate and enjoy. If you are interested in helping, write to "The Statue of Liberty and Ellis Island Foundation, Inc." PO Box 1986 New York, New York 10018

HISTORIC SITE BOARD DECISIONS

Historic Site Designation was granted to the following:

- 1. Little Hotel by the Sea, 8045 Jenner St.
- 2. Fleming Residence, 2250 B St.
- 3. Approved revised alterations to the Duehn/ St. John Residence, 4720 Kensington

There was a Golden Hill Revitalization Report by Tony Ciani concerning the Spruce Street Bridge. Special materials are on order for the repair so it will not be open until 6 January; however more rehab work will be done later.

Of special concern to SOHO was discussion concerning removal of the underground rest-rooms in Horton Plaza Park. CCDC further indicated that nearly a third of the park must be removed to accomplish this, and some of the original fabric of the park would be temporarily removed. Since a study and workshops will be held in January, the Historic Site Board recommended to the City Council that the park be left intact until after these meetings.



SOHO's Christmas Party

Each year's party is lovelier, warmer, and better than the last. How does Claire do it? Hard work and wonderful help, good ideas, and most of all, her good heart.

She promised fun, laughter, and good times and they were there in abundance. Cherry and Stephen Dimeff graciously offered their beautiful home, and it was pleasant to visit with them during the evening. Their house was decorated so exquisitely and we do appreciate their efforts, too.

All the door prizes were so well received, and I wish I'd had a chance to peek into all those goodies under the tree. Speaking of goodies, the table groaned with calories, of which I had more than my fair share.

A special thanks to Nettie, for all the lugging, setting up, and was that your recipe for the hot mulled wine? Delicious!

This is our own special SOHO time to share the year past and renew old acquaintances. What a perfect setting it was to do just that! THANK YOU!

Here is a list of SANTA'S HELPERS at the Christmas Party:

- Party Planner . . . Claire Kaplan
- Refreshment Chairperson . . . Nettie Scarry
- Committee . . .
- Alice Crittenden      Jean Evans
- Karen Ledterman      Louise Borchert

February SOHO Event Features Historic Gold Rush Cutter "Californian"

Mark February 11th on your calendar.

Gwen McFarland and Bruce Herms have made arrangements with the Dana Point Nautical Heritage Museum for an interesting multimedia program featuring the "CALIFORNIAN," a sailing vessel now being constructed here in San Diego.

Much interest has been generated by the construction of this ship at Spanish Landing. Although it is a new ship, it has its roots in early California History. And except for a few concessions to greater structural strength and longevity, it is faithful to the design and methods of construction of this early era. When completed, the "CALIFORNIAN" will be a full sized replica of the U.S. Coast Guard Cutter "Lawrence," which sailed the California coast during the gold rush days.

Although the "Californian" is being sponsored and constructed by the non-profit National Heritage Museum of Dana Point, the City of San Diego was fortunate to be selected as the building site of this historic vessel, thanks to the interest of the Port Commission and the efforts of Howard Thomas, long associated with the local Cabrillo Festival.

The Spanish Landing construction site provides San Diegans with a bit of living history and an opportunity to observe the vanishing art of wooden ship construction. One of the few remaining expert boatwrights was specially brought from the Bahamas to build the "Californian" in San Diego. The project is also under the guidance of internationally renowned naval architect Melbourne Smith, who designed the "Pride of Baltimore" clipper, which visited San Diego earlier this past year.

When completed, the "Californian" will become a floating classroom both at sea and in port for thousands of Californians, youngsters, adults, men and women who aspire to learn more about our nation's maritime heritage. It will also officially represent the State of California, both during the '84 Olympics and OPSAIL '86, celebrating the centennial of the Statue of Liberty!



- Nancy Ascher                      Lynn Oaten
- Pam Fields-Bacon                Malane Bealoch
- Judy and Rick McCutcheon
- Zenda and Robert Norte
- David and Betty Goldberg
- Barbara and Hal Hallen
- Barbara and Robert Klauschie

# HELP US PLAN HORTON PLAZA PARK

Ever since Alonzo Horton gave the first city park to the people of San Diego in 1871, Horton Plaza Park has been in a process of change, sometimes for the better, sometimes not.

Today, with the entire center of our community in an exciting time of change, it is appropriate to discuss what we want Horton Plaza Park to become.

## PLEASE COME TAKE PART IN DECIDING THE FUTURE OF HORTON PLAZA PARK

The public park-planning process begins with an important two-part workshop:

Part 1: Friday, January 20, 7:30 to 10 PM

Part 2: Saturday, January 21, 10 AM to 3:30 PM

Location: 18th Floor, Wells Fargo Bank Building  
101 West Broadway

(Plan to attend both sessions; wear comfortable clothing.)

## THE MOST IMPORTANT INGREDIENT FOR THE SUCCESS OF THIS PROCESS IS YOUR OWN PERSONAL PARTICIPATION

What you help to decide for Horton Plaza Park will be translated into outstanding plans and designs by the famed urban designer Lawrence Halprin. The public participation will be conducted by Jim Burns.

A second workshop is planned for February. We will then review what Lawrence Halprin has synthesized from our recommendations, and begin to zero in on more specific proposals for Horton Plaza Park.

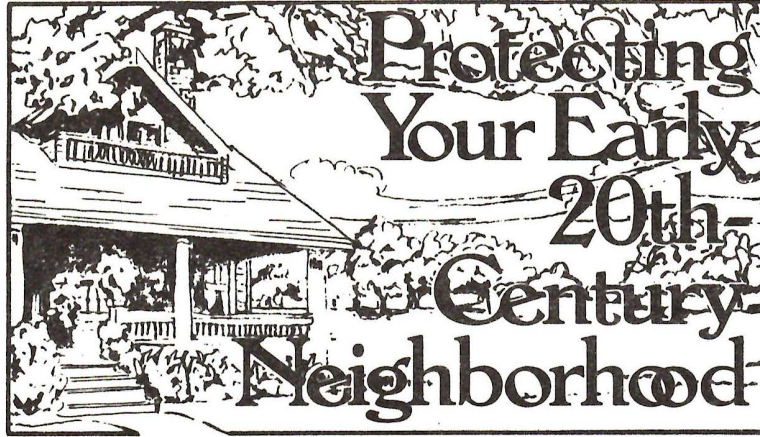
Please RSVP 236-7101

WE LOOK FORWARD TO SEEING YOU  
JANUARY 20 & 21

at the Wells Fargo Bank Building, 18th Floor


 Centre City  
Development  
Corporation

Suite 601  
 Spreckels Building  
 121 Broadway  
 San Diego, California 92101  
 619/236-7101



A great many people live in neighborhoods built between 1900 and 1930. These neighborhoods are important because they continue to provide the housing, schools, public amenities and commercial facilities that make many neighborhoods good places to live.

The early 20th-century houses and development patterns are key elements of these neighborhoods. Because these neighborhoods are so abundant throughout the United States, many people overlook their unique qualities or consider them undeserving of special attention. Consequently, new construction and development, building alterations, land-use plans and zoning frequently ignore the heritage of these neighborhoods. Homeowners, ignorant of the history of their house and the era in which it was built, often make inappropriate alterations. Some owners, for example, add Victorian gingerbread in order to make their house appear more historic.

Insensitive alterations and changes can destroy the special characteristics of the early 20th-century neighborhoods. To avoid this, residents interested in neighborhood revitalization and stabilization should become familiar with the area's architecture and history. By using this knowledge to build pride in the neighborhood and to foster a neighborhood conservation ethic among fellow residents and city officials, residents can help their neighborhoods remain good places to live while maintaining links to the past.

Residents, of course, must work together to develop the knowledge, human resources and clout needed to improve

their neighborhoods. If the neighborhood does not have a citizen association, residents should organize one. A neighborhood association, even a handful of concerned citizens, can exert a strong influence on guiding the future and welfare of the area.

To start, a steering committee of interested residents can meet to assess public support for a community organization, discuss the area's problems and consider projects that the group might undertake to address them. Once the groundwork is laid, the steering committee can invite area residents to a meeting where plans for the new organization can be discussed and initial projects selected.

Neighborhood groups should concentrate at first on those projects that are easy to organize, provide tangible results and build residents' involvement and enthusiasm.

Exploring the neighborhoods' history is a good way to kick off the group's endeavors. Many people find history fascinating, particularly when it involves their own homes. Early in the research, these volunteers can report to the members, perhaps in a newsletter, information on when the area developed, who built and designed the houses, where the trolley car route was, when significant events occurred and whether the neighborhood had any famous or infamous residents.

Once a neighborhood's history is researched, it can be used to inform residents within the neighborhood and others in the community about the area's assets and heritage. The group can

prepare a booklet on the neighborhood's history and brochures for walking tours. A neighborhood exhibit that includes old photographs and memorabilia from the area can be organized. Neighborhood days can be arranged with older residents reminiscing about the area's past. Similarly, house tours, neighborhood fairs, block improvement awards, restoration potluck suppers and other events can be sponsored by the group to bring residents together and encourage neighborhood improvements.

The group can also spur home improvements and promote sensitive renovation by compiling a list of area craftspeople experienced in repairing older houses and suppliers selling building materials, hardware and other items appropriate for early 1900s houses. By organizing home improvement training classes and a tool lending library, the group can help homeowners tackle many jobs themselves.

Researching the neighborhood's architecture and history will give the community group a valuable perspective for developing a plan to protect and enhance the area. This information can

help groups reinforce the position that, for example, the neighborhood deserves zoning that reflects the existing land use and protections against road widenings and other actions that might adversely affect the area.

The group might also consider seeking local historic or National-Register designation for the neighborhood as a whole or for specific landmark buildings. For a brochure describing the National Register of Historic Places, write the National Register, National Park Service, Dept. of the Interior, Washington, D.C. 20240.

Groups can acquaint local officials, bankers, real estate agents and community leaders with the neighborhood through meetings and by arranging bus or walking tours of the area.

Learning about the early 20th-century neighborhood can usher in a new phase in the area's life cycle, leading to renewed confidence in the neighborhood and improved houses and insuring that the legacy of our grandparents and great-grandparents will endure far into the future.

Traditionally, SOHO has focused on the architecture of San Diego. Significantly, the history and development of San Diego has been uniquely intertwined with the sea, reviving images of Cabrillo, Viscaino, Richard Henry Dana, Alonzo Horton, John Spreckles, and many others who came by sea. This will be a unique opportunity for SOHO members and friends to explore another facet of our heritage.

This special program sponsored by SOHO will be held from 1pm to 3pm on Saturday afternoon, 11 February 1984 in the Nimitz Room at the Admiral Kidd Officers Club, Harbor Drive in Point Loma. Mr. Steve Christman, President of the Dana Point Nautical Heritage Museum, will be the honored speaker and will present a multimedia slide tour tracing the development of the "Californian" from concept to the hardwood forests of Honduras, to the laying of the keel and construction here in San Diego. This will be followed by a musical presentation by the Heritage Players of Dana Point, dressed in period costumes. After refreshments, participants may visit

the actual construction site nearby for a firsthand view of progress.

Let's welcome our friends from Dana Point by having a big SOHO turnout with a hearty San Diego welcome. Make your RESERVATIONS AS SOON AS POSSIBLE by sending your check and self-addressed, stamped envelope to SOHO, PO Box 3571, San Diego, CA 92103. SOHO members \$3, nonmembers \$4. For further information call Bruce Herms after 7pm at 420-4366. Reservations must be received at Senlis Cottage before 8 Feb.

-----  
 YES, I'm interested in attending the program at the Admiral Kidd Club on 11 February 1984, at 1pm. Please reserve \_\_\_\_\_ places at \$3 for members and \$4 not. I am enclosing a check for \_\_\_\_\_.

NAME \_\_\_\_\_  
 Address \_\_\_\_\_  
 City \_\_\_\_\_ Zip \_\_\_\_\_  
 Telephone (\_\_\_\_) \_\_\_\_\_  
 (Include stamped, addressed envelope for return confirmation)



# MEMBERSHIP FORM

Please complete and return this membership form to:  
Save Our Heritage Organisation  
Post Office Box 3571  
San Diego, California 92103

SOHO depends upon membership dues, contributions, and fund raising activities to support our restoration/preservation expenses. Members receive the monthly SOHO Newsletter and invitations to special events. Gift memberships are available and we will send the recipient a card in your name announcing the gift. Memberships and donations are tax deductible. Please join us!

### MEMBERSHIP CATEGORIES

Benefactor . . . . .	\$1,000.
Patron . . . . .	\$100.
Corporate . . . . .	\$50.
Professional . . . . .	\$25.
Family . . . . .	\$15.
Single . . . . .	\$10.
Donation . . . . .	\$ _____

Name \_\_\_\_\_

Address \_\_\_\_\_

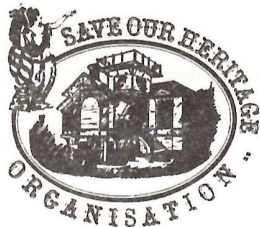
City \_\_\_\_\_

Zip Code \_\_\_\_\_ Phone \_\_\_\_\_

Add my name to your Volunteer List \_\_\_\_\_  
I prefer the following types of activities: \_\_\_\_\_

### TAX EXEMPT STATUS

SOHO is exempt from Federal Income Tax under Section 501(c)(3) of the Internal Revenue Code and has been classified by the I.R.S. as a charitable, educational organization.



P.O. Box 3571  
San Diego, CA 92103

NONPROFIT ORG.  
U. S. POSTAGE  
PAID  
SAN DIEGO, CALIF.  
PERMIT NO. 984

4/75  
Phillip & Alice Crittenden  
1890 Sheridan Ave.  
San Diego, CA 92103

address correction requested  
return postage guaranteed