



REFLECTIONS

THE S.O.H.O NEWSLETTER

DECEMBER 1983 Vol. XV No.11

SOHO Invites You to An Old-Fashioned CHRISTMAS PARTY in Banker's Mill

THERE WILL BE FUN!
THERE WILL BE LAUGHTER!
THERE WILL BE GOOD TIMES!
... AND YOU!!!

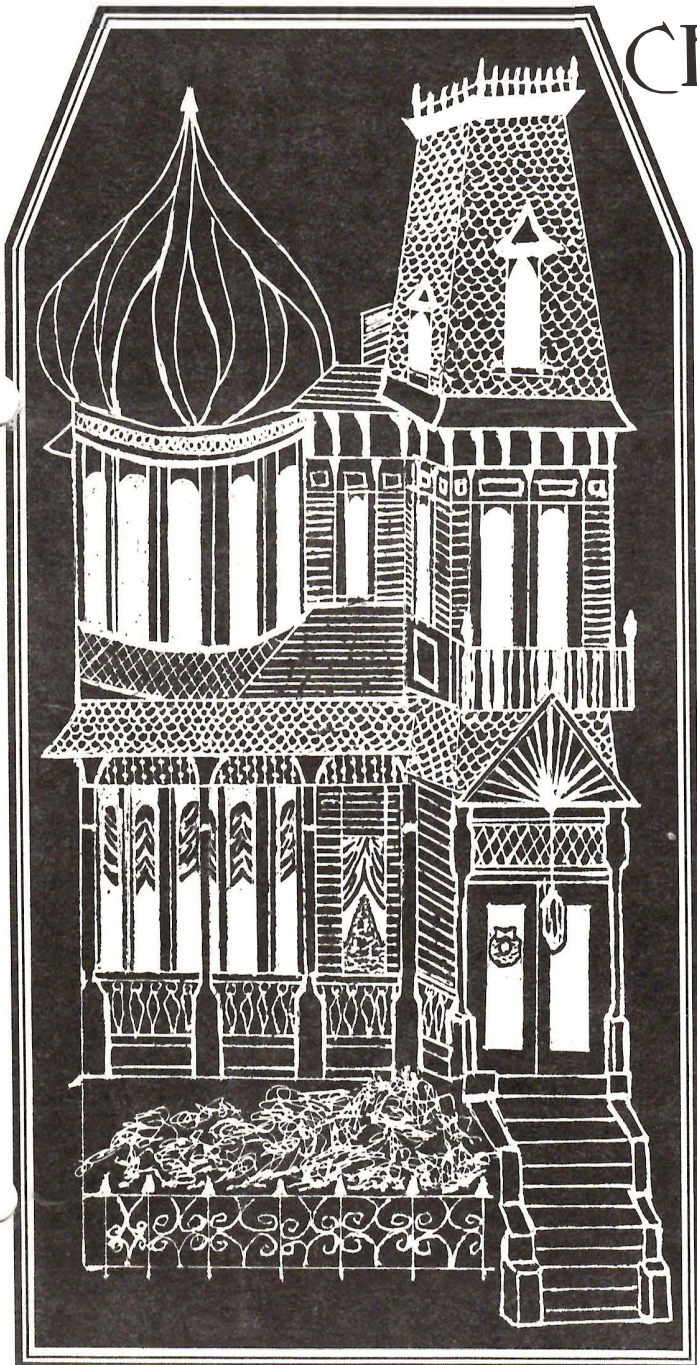
CHERRY and STEPHEN DIMEFF
graciously offered their beautiful
home (FOX HOUSE) at 3100 Brant St.,
for our annual Christmas Party on
Friday, December 16, 1983, at
7:30 PM.

Since it was such a success last year,
we will have another gift exchange,
with each guest bringing a present
(under \$2.00 and marked for a man
or a woman). Also there will be a
drawing for door prizes every half
hour. As always, please bring a plate
of goodies to share!

REMEMBER THE DATE...
DECEMBER 16 at 7:30 PM
WE WILL SEE YOU THEN!

IN THIS ISSUE:

Christmas on the Prado, December 2 & 3
Volunteer of the Year: Alice Crittenden
Heritage Park Slide Show Opens 21 January
Greetings from the President (of SOHO)



PRESIDENT'S MESSAGE

NEW MEMBERS

Sue Redondo
 Marilyn B. Monaghan
 Dorothy Curtiss
 Terri Akin
 Arthur Chapman
 Shirley Swearingen
 Dorothy D. Munro
 Julie Johnson Iavelli
 Elaine S. Campbell
 J. Arlene Mann
 Eleanor Richards
 Leah S. Liersch
 Ruth A. Sewell
 Nadine Hendrickson
 Susan L. Longley
 Jean E. Leiser
 Chuck & Robin Luby
 Stanley E. Smith
 Sharon Lee Hudson
 Newell & Gladene Booth
 Mr. & Mrs. John C. McGrew, Sr.
 Thomas T. Creamer
 Larry O'Dell
 Harold & Suzanne Richardson
 Peggy L. Whittingham
 Calvin Woo & Susan Merritt

Our Banker's Hill Tour made me realize just how very well we all pitch in together and make an event such a worth-while occasion. Certainly our tours show SOHO at its very finest. So many individuals expended so much time and energy for so long, that it came off professionally perfect and was well received by the public. The people of the community opened their doors to us so graciously that a warm reciprocal feeling evolved which could not have been fostered in any other way.

I THANK YOU ONE AND ALL!!!

I've also enjoyed meeting with the various committees as they start their year in SOHO.

Under the newly created NEIGHBORHOOD NETWORK, one of our major projects of the year, we will be helping the attractive, distinctive neighborhoods of San Diego to survive. It seems an appropriate role for our organization at this time. The Network will be an effort to bring neighborhoods together, share mutual concerns, solve problems, and help them implement their goals by offering them assistance in creating Historic Districts, facade easements, Historic Sites, etc. We hope our committee will act as liaison and clearing house for groups to broaden channels of communication with city hall and other appropriate agencies.

PUBLIC RELATIONS creates publicity and supports our vital public image. MEMBERSHIP is tied to our future growth, purpose in preservation, how we are perceived in the community, and ultimately how able we are to serve that community.

SLIDE SHOW/SPEAKER'S BUREAU is another adjunct to our public image. Karen and the Bolens have worked long hours to get this show on the road. What a great tool this will be to educate the community!

SPECIAL EVENTS is under the artistic care of Gwen McFarland, and indeed has very special happenings in store.

REFRESHMENT COMMITTEE of course works closely with all of us in all phases of our events. Nettie has been so giving of her energies. Help is needed!

VOLUNTEERS FOR THE SENLIS COTTAGE: Claire and Betty toil long and hard to keep a staff, but sometimes our little house stands alone and lonely. We do wish some of you would like to give some hours to staff it and have fun meeting the people who drop in, wanting to know all about SOHO. And speaking of the Cottage, Diane Schade could also use some help in "doing" the LIBRARY COMMITTEE. All these committees have to function to make us go, and to progress toward our goals. I'm sure there is a slot for everyone. THANK YOU ONE AND ALL!!

Editor: Loch David Crane (619) 222-2849

VOLUNTEERS?

Here is a listing of the committees that make SOHO the great group it is. I know you can fit in somewhere, and give us some of your unique qualities and talents!

1. Special Events: parties, gatherings, joint meetings Gwen McFarland, 282-6055
2. Membership Nancy Roberts, 282-5001
3. Neighborhood Network/Cathy Grigsby, 588-1802
4. Refreshments Nettie Scarry, 278-2396
5. Slide Show/Speakers Bureau Karen Johl, 296-9714; Eleanor Bolen, 268-3847
6. Volunteers Claire Kaplan, 286-8836; Betty Smith, 489-0968
7. Ad Hoc Pat Schaelchlin, 459-8409
8. Preservation Action Marie Lia, 226-2569
9. Library Diane Schade, 483-7316
10. Publicity Bill Bolen, 268-3847 or Judy McCutcheon, 565-4157

VOLUNTEERS ARE STILL NEEDED! Please help!

CHRISTMAS CHEER

Christmas on the Prado, the annual holiday celebration in Balboa Park, will take place Friday and Saturday, December 2 and 3 from 5 to 9pm.

All museums in Balboa Park will be open both evenings, including the San Diego Historical Society's "Celebrate the Holidays" exhibit. The museums are offering free or reduced price admissions, and their gift shops will be open for holiday purchases.

A high school choral competition will be held in the Organ Pavillion on Friday. The Mesa College Community Concert Band will perform there on Saturday.

Special food booths, a barbecue at the Model Railroad Museum in the Casa de Balboa, and a reduced price holiday meal at the Cafe Del Rey Moro should satisfy hungry appetites.

For further information about Christmas On the Prado, call the Reuben H. Fleet Space Theatre at 238-1233. Ho, Ho, Ho!



VOLUNTEER OF THE YEAR: ALICE CRITTENDEN!

- ...for "being there" when so many of us called on her for so much help;
- ...for "being there" at Senlis Cottage for so many hours;
- ...for "being there" at tour time when so much extra information needed to be gleaned; and
- ...for "being there" to keep excellent membership records, and giving us all this help so sweetly. ALL OUR LOVE AND THANKS!

SPANISH LANDING

The square-rigged sailing ship "California" is being constructed at Spanish Landing in Point Loma, and is now open for free public viewing. The tall ship is a replica of the revenue cutter "Lawrence," a fast sailing ship which patrolled local waters during the Gold Rush days. Several of the world's few remaining designers and shipwrights are working on the vessel, and will answer questions about various aspects of construction. Viewing is from 8am to 4pm daily.

DECEMBER'S CALENDAR

- 5th: SOHO Board Meeting, 7pm at Senlis Cottage in Heritage Park
- 6th: Christmas Party in Banker's Hill, 7:30pm at the Fox Residence, 3100 Brant
- 28 Nov. thru 11th: San Diego Historical Society's "Celebrate the Holidays" at Casa de Balboa, in Balboa Park
- 11th: Horton League Party

HERITAGE PARK HAS SLIDE SHOW PREMIER

The drama of houses moving down the streets of San Diego...the struggle to save Victorian structures...the exciting history of rescued buildings: all will be retold in a half-hour slide show, narrated by talk show host BILL BALLANCE.

SOHO members are invited to attend the premiere showing, 4pm Saturday, 21 January at the Community Room of the Reuben H. Fleet Space Theatre in Balboa Park. ADMISSION IS FREE, and the public is welcome. Seating will be on a first-come, first-served basis, so try to come early. The show will be repeated as needed.

The two-part multi-media show will become the foundation for the new SOHO SPEAKER'S BUREAU. Part 1, "Heritage Park--How and Why" describes the labor of love that went into forming the Victorian preserve of Heritage Park. Part 2, "Preserving San Diego Memories," recounts other SOHO projects, including the Villa Montezuma, Horton Plaza, and the Santa Fe Depot.

We look forward to your participation. By reviewing our past, we hope to build for the future.



SAVE THE COASTER

The Save the Coaster Committee and volunteers have been working on the coaster site in Mission Beach for 2 months now. We're beginning to get a feel for the job, and are delighted by the numbers of people who stop by to talk about the project. Many of them stay (or return) to work with us at painting, scraping, and cleaning the area of weeds, rocks, and miscellaneous debris. We hope to soon begin reconstruction of the stationhouse framework.

I would like to repeat my invitation of last month to JOIN WITH US ANY SUNDAY you are able, between 9am and 4pm--weather and holidays permitting. Bring your work clothes and gloves, and pitch in with us.

We are also beginning to shape a plan for a MAJOR FUNDRAISING PARTY to be held during National Preservation Week in May. All offers of ideas, contacts, or VOLUNTEER PARTICIPATION WILL BE EAGERLY ACCEPTED. Call Coaster Committee President Judy Swink (488-8916 leave message) or Call Carol [Lindemulder] at 295-6188.

General Meeting Draws S.R.O.

By Michael Sullivan

What a party! Usually, general meetings have an ominous dryness to them. Just the word "general" seems so stern. Well, if you had the good fortune to attend the general meeting the night of September 21 at the Rowing Club/Chart House, you may want to attend more.

SOHO honored Pat Schaelchlin and the original members of the Citizens for the Rowing Club Committee with a celebration and congratulations for their work in saving the historic building.

Out-going president Cathy Grigsby presented Pat with a brass plaque mounted on a piece of the original hardwood flooring as a memento of our appreciation for her tireless efforts.

City Councilman, Bill Mitchell, presented Pat with a commendation from the City Council and County Supervisor Patrick Boarman presented Pat with a proclamation declaring September 21, 1983 Pat Schaelchlin Day in San Diego county and a commendation for her preservation work in San Diego.

In the midst of all this excitement the hors d'oeuvres kept flowing; not cheese and crackers either--there were trays of boiled jumbo shrimp and cocktail sauce (ask Marc Tarasuck about the cocktail sauce); oysters on the half shell, oysters Rockefeller, fresh raw clams, baked clams, and fresh baked french bread with butter. The no-host bar had the waitresses busy and the standing room only crowd made deliveries tough.

The election of officers and the board of directors followed suit with a quick approval by the membership. Mary Joralmon took the presidential gavel from Cathy Grigsby and a fresh board of directors and officers started their terms.

As chairman of the nominating committee, I would like to thank the entire membership for their participation in the nominating and elections. I especially would like to thank Bruce Herms and David Goldberg for their helpful assistance on the nominating committee. And a very special thanks to all those members who have served on the board this past year and to those who have accepted positions this year.

All in all, it was a huge success. The turnout was fantastic, the food and beverages great, the restoration magnificent, and the honorees all well deserving.

Also, special thanks to Mary Joralmon, Nancy Roberts, and Gwen McFarland--the team that organized the bash.

Thanks to all who came, all who made it happen, and to the Chart House for their belief in historic preservation.

Historic theater for sale

OAKLAND (UPI) — The wreckers' ball may be waiting in the wings for The Fox Oakland Theater, opened in 1928 and now one of the few remaining "movie palaces" in the nation.

It's up for sale — with a price tag of \$6 million.

The 3,200-seat showhouse, billed as the "largest theater on the Pacific Coast" when it opened, is being sold by Erma DeLucchi who purchased it at a 1978 auction for \$340,000.

By buying the theater, DeLucchi beat back a plan to tear it down and build a parking lot. Later, she entered into a scheme to bring in live theater and convert some space into a hotel and restaurant but that plan fell through.

Today the theater sits vacant except for a few offices, located on prime land in the heart of town.

A spokesman for DeLucchi said she would prefer to lease the building to somebody who would renovate it, but added "if that's not feasible, we will sell."

The Fox, a three-story structure topped by a 115-foot Hindu tower, is listed on the National Register of Historic Places. However, unless federal money is involved, that won't save it from demolition if the new owner decides to tear the Fox down and build, say, a high-rise office building.

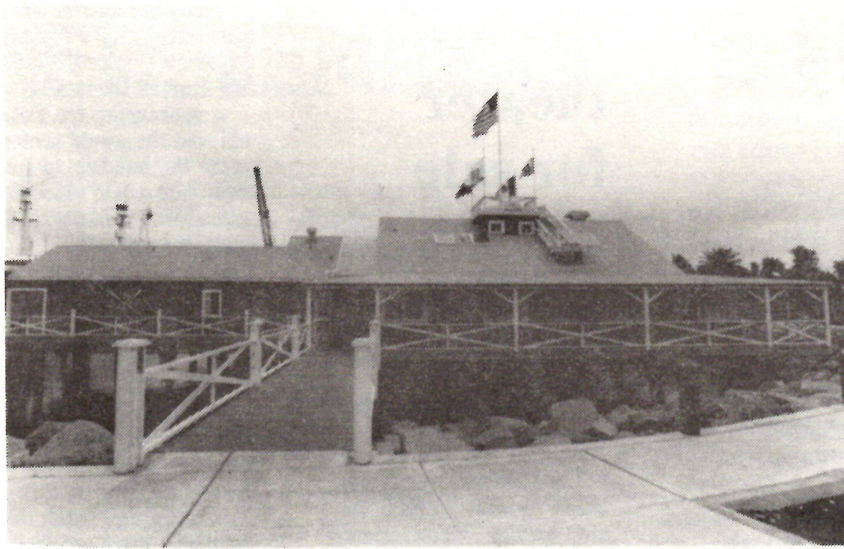
Battling to preserve old structures is nothing new in Oakland where the Paramount Theater, an outstanding example of Art Deco architecture constructed in 1931, was saved in 1972 only after a long fight.



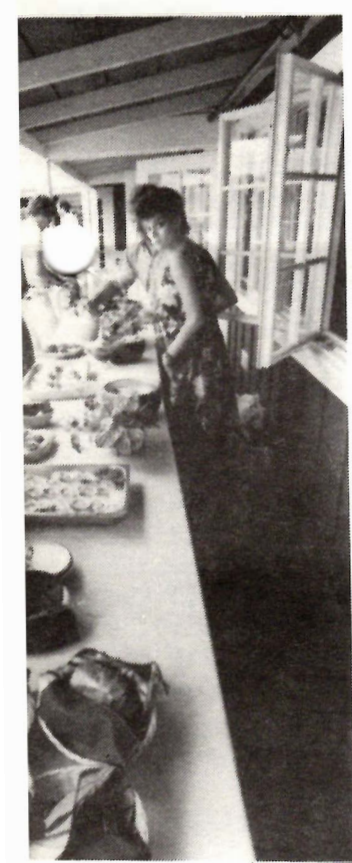
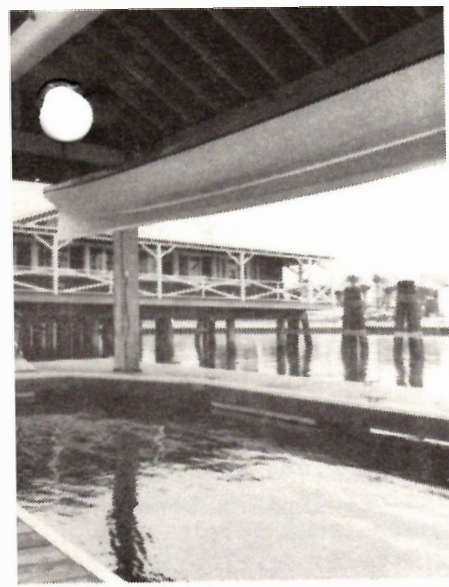
SAN DIEGO HISTORICAL SOCIETY

The San Diego Historical Society will be temporarily closing its research departments until Tuesday, 15 November. The reason for the closure is to move the Library, Manuscripts, and Public Records Collections from the Serra Museum to its new facility in Balboa Park. The research departments will reopen 15 November, with hours Tuesday thru Saturday, 10am-4pm.

The new location is within the Casa de Balboa in Balboa Park, which is on El Prado just West of the Reuben H. Fleet Space Center. For further information, please call the Serra Museum at 298-3258 or the new Research Archives at 232-6203.



SEPTEMBER'S MEETING OF THE S was held at the newly refurb which now houses a Chart Hou the upper left, photos show crowd, which dined on s...o smiling Claire Kaplan, a fre (above) the hors d'ouvres va Cathy Grigsby and Nick Fintz outgoing President Carol Lin



WE OUR HERITAGE ORGANISATION
shed San Diego Rowing Club;
e Restaurant. Starting from
he entryway and details; the
special dishes eagerly;
uent Reflections columnist;
ishing rapidly; grinning
lburg; and Save The Coaster
emulder (in glasses) toasts.

NEW MEMBERS

Dr. Juan & Kathleen Surós
 Janie A. Jacobs-James R. Gaston
 Mr. & Mrs. Charles D. Finney
 R. Stern
 Mr. & Mrs. William F. Higley
 Sally Mary Kazmarek
 Lorraine H. Brown
 Ann S. Beard, "Frame Affair"
 Cheryl Connell
 Nancy Ascher
 Mr. & Mrs. Carlos Fowler
 Mitchell & Renee Wagner
 Marilyn & Marion R. Prine, Jr.
 Diana Brady
 Mary Gallagher

DONATIONS

Mrs. F. G. Lindemulder
 Mrs. Rush L. Canon
 Betty Goldberg
 Adrienne L. Kessler
 Marilyn & Marion R. Prine, Jr.



VOLUNTEERS?

Here is a listing of the committees that make SOHO the great group it is. I know you can fit in somewhere, and give us some of your unique qualities and talents!

1. Special Events: parties, gatherings, joint meetings Gwen McFarland, 282-6055
2. Membership Nancy Roberts, 282-5001
3. Neighborhood Network/Cathy Grigsby, 588-1802
4. Refreshments Nettie Scarry, 278-2396
5. Slide Show/Speakers Bureau Karen Johl, 296-9714; Eleanor Bolen, 268-3847
6. Volunteers Claire Kaplan, 286-8836; Betty Smith, 489-0968
7. Ad Hoc Pat Schaelchlin, 459-8409
8. Preservation Action Marie Lia, 226-2569
9. Library Diane Schade, 483-7316
10. Publicity Bill Bolen, 268-3847 or Judy McCutcheon, 565-4157

VOLUNTEERS ARE STILL NEEDED! Please help!

An INVITATION

This is an invitation to each of you to become part of an exciting project: the restoration of the MISSION BEACH ROLLER COASTER. Listed on the National Register of Historic Places, and one of only two remaining wooden coasters on the West coast, ours now belongs to the SAVE THE COASTER COMMITTEE. The Coaster Committee plans to restore the structure to its 1925 appearance.

The "Giant Dipper" (more recently called the Earthquake) was built in 1925 as part of the Spreckels Brothers creation, Mission Beach Amusement Center. Along with the original Plunge building, it is a symbol of San Diego's early beach front development.

The Coaster Committee is developing a museum which will chronicle the roller coaster and other amusement parks as they reflect America's heritage and growth. This museum has the potential to be the only one of its kind in the country, and coaster historians are already doing research and submitting documents to the project.

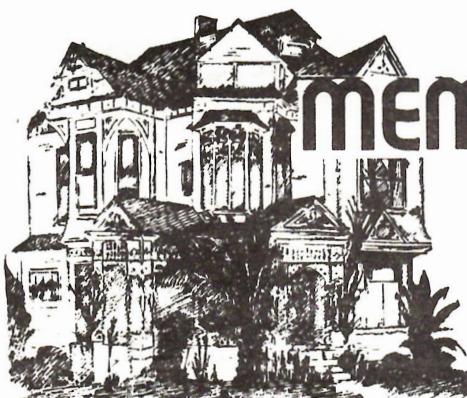
VOLUNTEERS ARE NEEDED to help complete the initial restoration, as well as purchase materials. Save the Coaster Committee members and volunteers will be **WORKING ON THE SITE EVERY SUNDAY BETWEEN 9 AND 4**. Please come by and stay to help paint, scrape, rebuild, or reminisce.

Save the Coaster Committee is a non-profit corporation of interested San Diegans working to retain this wooden coaster for future generations to study and enjoy. The Corporation owns the Coaster, and leases the land under it from the City. All donations are tax deductible. For information, contact Judy Swink, 488-8916 or visit the **ROLLER COASTER CAFE**, 3221 Mission Blvd. to see/buy a T shirt with a Robert Miles Parker drawing of the coaster. Here we go-o-o-o!!

A PAT ON THE BACK FOR US!

SOHO PRESENTED \$500 to the Heritage Task force for their 1983 program, and SOHO PRESENTED \$250 to the California Preservation for Action.

Both of these groups are implementing legislation in preservation legislation, and looking to our betterment as instruments in accomplishing these ends. SOHO PRESENTED \$100 for a commemorative cobblestone with our name inscribed for placement in the William Heath Davis House Park entryway. This money will be used to help with restoration of the house.



MEMBERSHIP FORM

Please complete and return this membership form to:

Save Our Heritage Organisation
Post Office Box 3571
San Diego, California 92103

SOHO depends upon membership dues, contributions, and fund raising activities to support our restoration/preservation expenses. Members receive the monthly SOHO Newsletter and invitations to special events. Gift memberships are available and we will send the recipient a card in your name announcing the gift. Memberships and donations are tax deductible. Please join us!

Name _____

Address _____

City _____

Zip Code _____ Phone _____

Add my name to your Volunteer List _____

I prefer the following types of activities: _____

MEMBERSHIP CATEGORIES

- Benefactor \$1,000.
- Patron \$100.
- Corporate \$50.
- Professional \$25.
- Family \$15.
- Single \$10.
- Donation \$ _____

TAX EXEMPT STATUS

SOHO is exempt from Federal Income Tax under Section 501(c)(3) of the Internal Revenue Code and has been classified by the I.R.S. as a charitable, educational organization.



P.O. Box 3571
San Diego, CA 92103

NONPROFIT ORG.
U. S. POSTAGE
PAID
SAN DIEGO, CALIF.
PERMIT NO. 984

4/75
Phillip & Alice Crittenden
1890 Sheridan Ave.
San Diego, CA 92103

address correction requested
return postage guaranteed