



THE S.O.H.O. NEWSLETTER

REFLECTIONS

Volume 13, No. 7

JULY, 1981

P.O. BOX 3571 SAN DIEGO, CALIFORNIA 92103



SOHO members are invited to attend the multi-award winning play **EVITA** at the Shubert Theater in Los Angeles on Saturday, July 25, 1981. The play is a multi Tony award winner, including best musical of 1980. The musical is based on the story of Eva Peron, wife of the former president of Argentina, Juan Peron.

Prices charged to SOHO members will be \$30, and to non-members, \$35. The tour is from 8:00 a.m. to 8:00 p.m. and includes a complete bus trip to Los Angeles and back to San Diego. The forty reserved seats are some of the best in the house, so be sure to make your reservations early. Bruce Herms is chairman of the tour. Please call the Senlis Cottage at 297-9327 for further information.

People leaving from the San Diego area will meet at the Spreckles Organ Pavilion in Balboa Park. The North County pick up will be at the Plaza of 4 Flags Center off the Lomas Santa Fe exit off I-5.

Welcome New Members

*Olivia E. Chier
Ann L. Huntsinger
Diane R. Lennert
Catherine & David Merrihew
Michael & Sherry Olkonen
Lynwood Marie Small*

JULY CALENDAR

Thursday, July 2
7:30 p.m.

SOHO Board Meeting
Joan Easley, 3147 Front Street
Call 295-6146 for more information

Tuesday, July 7
1:30 p.m.

Historical Site Board
4th Floor Conference Room
City Administration Building

Tuesday, July 7
2:00 p.m.

Port Commission
3165 Pacific Highway

Monday, July 13
7:30 p.m.

Uptown Planners
Central Federal Savings
610 Washington (296-2577)

Tuesday, July 21
Noon

San Diego Historical Society
Villa Montezuma, 1925 K Street
(239-2211)

REFLECTIONS

Nancy Roberts
Editor

Med Beauregard
Photographer

SOHO OFFICERS 1980-1981

Carol Lindemulder
President

Larry Ford
Executive Vice-President

Ruth Padgett
Vice-President for
Governmental Affairs

Jan Kitchel
Vice-President for Education

Carole Frick
Secretary

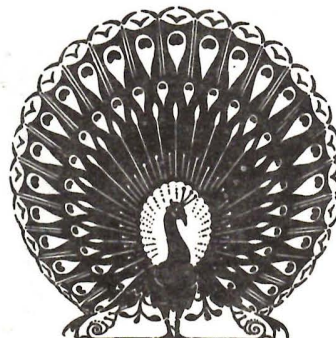
Sally Johns
Treasurer

SOHO BOARD OF DIRECTORS

Carol Lindemulder
Larry Ford
Carole Frick
Charles Hellerich
Joe Jones
Matt Potter
Michael Sullivan
Pat Schaelchlin
Sally Johns
Donna Regan
Mary Dell Worthington
Jan Kitchel
Ruth Padgett
Joan Easley
Cathy Grigsby
Bruce Herms
Gwen MacFarland

P.O. Box 3571
San Diego, CA 92103
(714) 297-9327

The SOHO newsletter is published monthly. Letters to the Editor are welcomed. Articles and/or photographs of interest to SOHO members and friends are most enthusiastically encouraged!



FROM THE BOARDROOM

On June 2, 1981 the following items were discussed at the Board of Directors monthly meeting.

Pat Schaelchlin reported that the Port Commission moved that a Request for Proposal be presented at their June 14 meeting. (See story in this issue.)

Michael Sullivan reported on his visit to the Historic Site Board. Historic site designations were granted to the Chinese Benevolent Society and the Ying-On Merchants and Labor Association buildings. Action on the Stingeree Bordello building was postponed pending further investigation of architectural significance.

Carol Frick and *Michael Sullivan* reported on the planning of the 4th of July celebration.

Jan Kitchel reported on the success of the May Uptown-Middletown tour.

Bruce Herms reported that he is confirming the EVITA tour for July 25.

Cathy Grigsby requested a committee to review her suggestion of directing California Heritage Tours.

Joe Jones requested volunteers for the nominating committee and suggestions for officers and board members.

Carol's Corner

By Carol Lindemulder
SOHO President

Some historic preservation issues seem an exercise in futility. Often the real question to be determined is why the historic determination process must be followed by some, and not necessarily by others. If a question arises as to whether proper procedures were followed, there are avenues open to make that finding. Historic preservation regulations were first introduced into federal law prior to the turn of the century. This was a populace request, even then demonstrating the desire by the public to preserve something of our heritage for future generations. The current federal regulations regarding the necessity of any federal agency to determine whether it has any historic properties in any situation which might require trade, sale or demolition are specific. When these regulations appear to have been ignored, or overruled, it falls to every historic preservation organization to be the conscience of the process. Without an orderly process we will have no history left at all.

The NAVY SHORE PATROL BUILDING has been such an issue. The simple question which federal Section 106 requires is whether or not this structure is eligible for the National Register. This in no way affects any potential final disposition of the building, including demolition, but it would at least require proper documentation to be filed in the Library of Congress so that others might study any significance at a future time when the building may no longer exist.

The structure was built by Edwin Morris Capps, twice Mayor of San Diego, in 1911. Capps was also Harbor Engineer from 1912, supervising the dredging and Broadway pier construction, which he designed. He designed the Spruce Street suspension bridge the same year. Early in his career he was Chief Engineer for the Tujunga Land and Water Company, received a patent on a rapid fire gun, was City Engineer as early as 1893, and prior to that acting Chief Engineer for the Jamacha Irrigation District.

Capps was Mayor during the 1915 Exposition, and much of his renown comes from his efforts to publicize the need for the City (Balboa) Park expansion, a county water reclamation project, the development of San Diego's harbor to establish the city as a major West Coast port. We have today a city still using these projects in concept, still benefiting from his designs.

The Shore Patrol building is modeled on the Greek (classical) Tetra-style temple and is the only structure known here of this architectural form, no others remaining. As the first City Jail constructed in booming New Town after the turn of the century, next to the Police Headquarters, it had several unique features, including



indoor shower facilities for prisoners. The correspondence mentioned historically from the Board of Charities indicates they believed the structure would stand as a model for future prison design.

There is little doubt the structure holds up historically, and the builder most certainly was one of the great contributors to the growing development of San Diego. This is the kind of historical material we should be proud to preserve, and SOHO cannot turn its back on such an issue.



LIBRARY NEWS

By Karen Sharpe
SOHO Librarian

Last month two books on how to rehabilitate the older home were reviewed. If you're not currently restoring or have plans to restore an older home, you might be more interested in becoming knowledgeable about the numerous architectural styles in America.

IDENTIFYING AMERICAN ARCHITECTURE: A PICTORIAL GUIDE TO STYLES AND TERMS, 1600-1945 by John J.-G. Blumenson is a detailed pictorial handbook about architectural styles and terms. It emphasizes domestic architecture including photographs and drawings of styles such as Colonial, Mission, Federal, Victorian, Italian, Stick, Eastlake, Bungalow, etc. It also includes a very extensive glossary. The book is an excellent guide to "reading buildings."

In *INTERPRETATION OF HISTORIC SITES*, William T. Alderson and Shirley Payne Low discuss many aspects of interpreting historic sites. The authors detail objectives that should be set during the research stage as well as during the restoration process. They explain how to plan tours for adults and school groups; how to use costuming; what publicity is effective; if audio visual presentations should be used; how to set up displays; and the importance of security. The authors also describe how to evaluate an organization's program of interpreting historic sites.

San Diego's Scripps's Laboratory

By Sharon Almond

San Diego's Scripps's Laboratory is not only an architectural landmark, but is a building which has occupied an impressive place in the history of oceanography. "Old Scripps," listed in the National Register and San Diego Historic Sites List, was the first permanent shoreside marine biological station in the Western Hemisphere. It has been the working place of many of the world's leaders in oceanography, including eleven who have become members of the National Academy of Sciences.

Known officially as the George H. Scripps Memorial Marine Biological Laboratory, it was designed and built under the direction of Irving J. Gill. According to Esther McCoy, author of *Five California Architects*, the laboratory was said to have "marked the beginning of his mature style . . . utilitarian, with cost a major consideration. This was Gill's opportunity to experiment in concrete monolithic construction, to strip away ornament and projections and to flatten the roof." Using the latest techniques available in reinforcing concrete, this building meets the same loadcarrying capabilities required of buildings constructed today.

The erection of the laboratory in 1910 is one of San Diego's earliest examples of productive collaboration between scientists, architects, and political and business leaders. Zoologist William Ritter had begun to survey California coastal marine life in 1892, carrying out biological studies and looking for a permanent site for a summer station. Some of San Diego's citizens enthusiastically supported the plan to make our city the spot for a permanent biological station, and a special committee of the Chamber of Commerce started backing the project in 1903. Newspaper publisher E. W. Scripps, Ellen Browning Scripps, H. L. Titus and Dr. Fred Baker were among those involved in the project from the business and professional community. When the scientific group became anxious about Gill's reputation for high cost structures, Julius Wangenheim agreed to cover any overrun. Gill's design met all the requirements, however, and was built well within the budget.

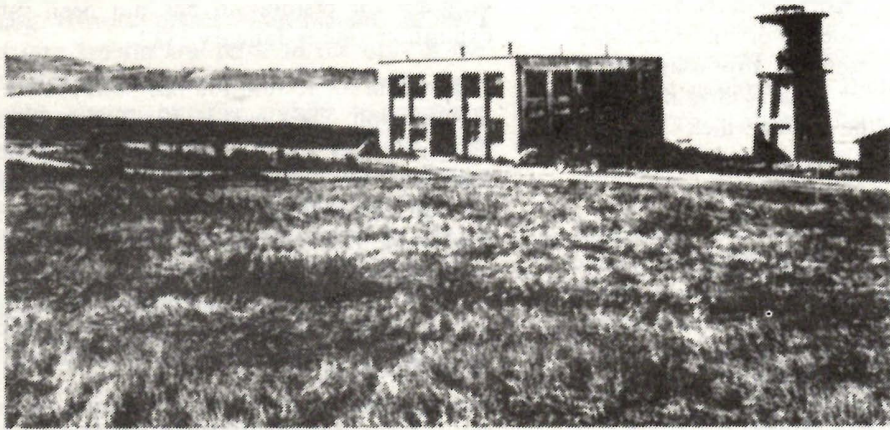
To provide an inviting, efficient atmosphere in which to work, Gill used such features as internal windows, wide corridors and northlit offices. The interior "sidewalk lights," which are glass block prisms, function as skylights to bring light to the first floor. Remodelling work done in 1931 has unfortunately left this floor less spacious and well-lit as compared with Gill's original design.

The laboratory was the first building on the site of what is now the Scripps Institution of Oceanography. At the time work was begun, marine science was conducted independently at various universities and small marine stations, and the majority were located in Europe. All of the late 1800's structures are impressive in terms of dimensions and facade, compared with the Scripps Laboratory, but none of them has grown much beyond their circa - 1900 size and scope.

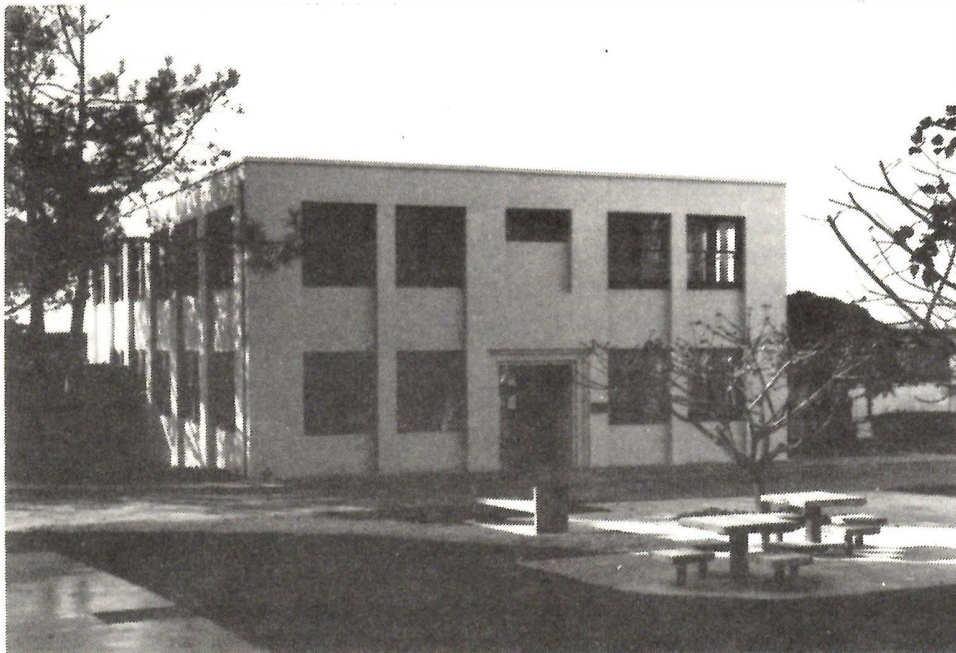
At first, "Old Scripps" housed everything, including living quarters for Director Ritter and his wife. They lived on the second floor of the lab for three years, until a home was built for them nearby. All research projects were conducted from the laboratory, and the small institution began to expand into studies outside marine biology. By the 1930's the laboratory work had expanded to include a full range of oceanographic studies, including biological, physical, chemical and geological research. The planning of Scripps's Institution's fleet of research ships and its first major expeditions originated in the lab.

Ocean research and education grew quickly after World War II, and the Scripps's Institution offered the only advanced-degree program at that time in oceanography. When new buildings were added to the campus, the lab became the center for marine geologists and biologists. By the 1970's, only biological studies were conducted in the lab, and when the Marine Biologic Building was completed in 1977, "Old Scripps" was left unoccupied, to be torn down or restored. The structure has not been forgotten, however. Restoration goes on now, directed by the Old Scripps Building Committee. In an effort to return the building to the status of a working oceanographic laboratory, the roof, skylights and exterior windows have been made watertight. Fire protection sprinklers are in, and the exterior has been repaired and painted. San Diego architect John Henderson has completed plans to restore the classroom, and carpets have been donated for the necessary floor covering.

Members of the committee are hoping to have completed enough work by Fall 1981 to put the classroom back into use, and to this end, "demolition therapy" workparties are regularly scheduled. Your participation in this is welcome, and Sarah Spiess, 453-0373 would be glad to give you the details. Any contributions to offset the cost of the restoration may be sent to Old Scripps Restoration Fund, UCSD Foundation, Q-011, La Jolla, CA 92093.



GEORGE H. SCRIPPS BUILDING AS JUST COMPLETED IN 1910



1981

The Continuing Saga of The San Diego Rowing Club Boathouse

By Pat Schaelclin

THE 1899-00 SAN DIEGO ROWING CLUB BOATHOUSE located in the tidelands of the San Diego Bay at the foot of Fifth Avenue, is one step closer to restoration. Based upon the June 2 motion of William Rick, Port Commissioner and former Chairman of the San Diego Historical Site Board, the Unified Port District staff prepared and presented a Request For Proposal for the restoration of the boathouse at the June 14 meeting. It was not a completed RFP, but was the outline which contained the essence of the Rick motion, along with a Development Timetable.

It was this Timetable that representatives of the San Diegans For The Rowing Clubhouse, Inc. (the committee) took issue with. According to the Timetable, actual restoration would not begin until February 1983. The Port Commissioners agreed with the committee objections and also questioned, as we did, the financial responsibility of the proposer to underwrite the \$210,000 cost of expanding the existing northwest wharf next to the boathouse. This wharf will benefit the future marine operation that is scheduled for the water area.

Several items were also questioned by the committee who have worked for over a year and a half in negotiating with the Port Commission. Among these items questioned were the necessity of an EIR and a lengthy amendment process. Ben Cohen, the representative on the Port Commission from Coronado, suggested that these items be scheduled early and simultaneously. This would effectively and significantly shorten the process time, bringing the time factor into some control.

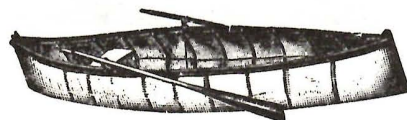
The time factor is of primary importance. The natural elements will continue to weaken the building; the Fire Marshal has already condemned the building recently and the Port District was notified that it is considered a derelict building and that the Fire Department will soon require that it either be removed or secured. Last October, at the hearing of the State Coastal Commission in the certification of the Port's Master Plan, the Port District was directed to designate the Boathouse as "an historic feature since the

Rowing Club Boathouse is listed on the National Register of Historic Places." It also stated that the Port Commission should hear any program for restoration of the boathouse, but that this condition would not apply after one year "if a program for restoration has not been submitted." This expiration date is January 1982.

A program for restoration *has been presented* to the Port Commission. The Chart House, Inc., a national restaurant chain, wishes to assume the responsibility for the boathouse's restoration. Their proposal with its sensitivity to the architectural and historical significance of the boathouse, along with their proven ability (they have exceptionally restored 14 historic buildings across the country, the Del Coronado boathouse being among them) makes them a prime candidate to restore the boathouse, according to the committee.

The approval of the RFP was moved to be continued by Commissioner Louis Wolfsheimer because the Commission also questioned the length of time required for the implementation of the restoration and because of the wharf expenditure. It will again come before the Commission on June 30 when the staff will present a shortened Development Timetable and the wharf responsibility will be clarified.

The support of the Port Commissioners has been gratifying in the efforts to save the boathouse. For the first time in over six years, there is hope. But this hope may be sabotaged by the process as now set forth. As SOHO President Carol Lindemulder said, "The building may not be there to be saved in 1983." It is imperative that special consideration be given to this special building. It is also imperative that it be immediately secured against vandalism, the natural elements and for the safety of the public until restoration can begin. The Port Commissioners agreed with this and hopefully and finally, perhaps the San Diego Rowing Club Boathouse will receive the attention of the Port District--in a constructive manner, of course.



Attorney Helps SOHO Save

By Carol Lindemulder

Meet our attorney, **CHARLES (Chuck) HELLERICK**, at least on paper, if you haven't had the opportunity in person. (You can't miss him really, because he's about six feet four, with a boyish grin and a mind like a steel trap, at least legally.) Chuck is with Luce, Forward, Hamilton and Scripps, and his speciality is Real Property. He and his lovely wife, Jeanne, live in an older home they have restored in Mission Hills, and they are currently going through the traumas of building their new home. They are both avid joggers and both work full time.

Chuck generously donates his time to SOHO on our Board of Directors, and we would have been lost in the last two years without his knowledge and patience. To his special credit goes our lease agreement with the County, the pursuit of purchase of the Mathew Sherman House in Sherman Heights, and the three Facade Easements he drew up for us which are a first in historic preservation in San Diego. (He told me the other day even Washington is calling him about them.) Hopefully, you all read Chuck's article about these easements in the May Reflections issue. Without Chuck Hellerick, SOHO could not have accomplished all that it has since he joined us in 1979.

SOHO THANKS YOU from the bottom of its 700 member hearts.

Wing Gallery Exhibiting Antique Quilts

THE WING GALLERY, located at 2753 B Street is currently exhibiting handmade antique quilts. The show, titled, *Grandmother's Quilt Show*, will be on display through July 15. The quilts have been collected from the entire country including such designs as log cabin crazy quilt and lone star. Included in the display is a quilt made by the grandmother of Robert Miles Parker, SOHO's founder.

Quilt making is a time honored woman's art depicting original abstract design and documenting the social experience of the American woman.

The Wing Gallery specializes in women's art form, both historical and contemporary. The gallery is open Monday through Friday, 7:30 a.m. to 1:30 p.m. and Friday and Saturday evening from 7:30 p.m. to 11:30 p.m., or by special appointment. For further information, call the Wing Gallery and Cafe at 239-9906.

Announcements

Rolls-Royce Tour of La Jolla - The La Jolla Historical Society will sponsor its 4th Annual Rolls-Royce Tour of La Jolla on Thursday, August 20, 1981. The participants will gather at St. James Episcopal Church at 10:30 a.m. for an organ demonstration. Luncheon will be served at the La Jolla Country Club. The tour group will be driven through the Black Farms residential area. The group will visit the world famous medical research organization--Salk Institute--where they will enjoy a conducted tour. Leaving Salk Institute, the group will be guests at a private residence in the La Jolla Shores area where they will have a "champagne break." The tour will conclude at 3:15 p.m.

All of the Rolls-Royces are classics. There will be ten cars and the tour will be limited to forty people. Therefore, make your reservations early. Your \$25 donation will secure you a place on the tour. Send your check to: The La Jolla Historical Society, P.O. Box 2085, La Jolla, CA 92038, or phone 454-3754 or 459-5335 on Tuesday or Thursday afternoons.

Northwest Passage: Fall Tour by S. D. Historical Society - A very special tour of three major Northwest cities is currently being planned for early fall by the San Diego Historical Society. The tour, which is scheduled for September 28 - October 5, will include two nights in Vancouver and Victoria, British Columbia, and three nights in Seattle, Washington.

A heritage tour of Vancouver, personally guided tours of the Provincial Museum in Victoria, the Seattle Art Museum, and the Seattle "underground," a ferry trip from Victoria to Seattle through Puget Sound, and a side trip to historic Port Townsend, a beautifully restored late Victorian town, are all features of the trip.

The total cost will be under \$800 which will include air fare, all accommodations (based on double occupancy), transportation to and from airports, portage in and out of hotels, ferry crossings, all previously arranged bus tours, and some meals. (Due to fluctuating air fare, the total cost may change.) All first-rate hotel accommodations will be within walking distance from museums, shops, restaurants, and other key points of interest.

Reservations are limited, and a \$100 deposit per person is required by July 13 with the balance due by August 28. For a brochure and more information, call Cindy Eddy at the Villa Montezuma, 239-2211.

Donations

Dudley K. Graham, for bandstand & gazebo

In honor of the wedding anniversary of Joe & Claire Kaplan, Lee & Marie Douglas for Temple Beth Israel



MEMBERSHIP FORM

Please complete and return this membership form to:
Save Our Heritage Organisation
Post Office Box 3571
San Diego, California 92103

SOHO depends upon membership dues, contributions, and fund raising activities to support our restoration/preservation expenses. Members receive the monthly SOHO Newsletter and invitations to special events. Gift memberships are available and we will send the recipient a card in your name announcing the gift. Memberships and donations are tax deductible. Please join us!

Name _____

Address _____

City _____

Zip Code _____ Phone _____

Add my name to your Volunteer List _____
I prefer the following types of activities: _____

MEMBERSHIP CATEGORIES

- Benefactor \$1,000.
- Patron \$100.
- Corporate \$50.
- Professional \$25.
- Family \$15.
- Single \$10.
- Donation \$ _____

TAX EXEMPT STATUS

SOHO is exempt from Federal Income Tax under Section 501(c)(3) of the Internal Revenue Code and has been classified by the I.R.S. as a charitable, educational organization.



P.O. Box 3571
San Diego, CA 92103

NONPROFIT ORG.
U. S. POSTAGE
PAID
SAN DIEGO, CALIF.
PERMIT NO. 984

address correction requested
return postage guaranteed