



THE S.O.H.O. NEWSLETTER

REFLECTIONS

VOL. XIII NO. 1

JAN. 1981

P.O. BOX 3571 SAN DIEGO, CALIFORNIA 92103

1980 CONTRIBUTORS

MAKE PRESERVATION POSSIBLE

Who wishes both to thank and to recognize all of you who have made contributions in 1980. The funds you have provided are an essential part of preservation work. It is you who are making possible the complete rebuilding and restoration of the Senlis Cottage and the Temple Beth Israel in Heritage Park. We thank you - each and every one of you - warmly!

DONATIONS TO THE RESTORATION OF SENLIS COTTAGE

Mr. and Mrs. D. Dickinson
Miss Carrie G. Wall
Mrs. F. G. Lindemulder
Leah J. Tack
David M. Miller, Jr.
Mrs. Rush L. Canon
David Goldberg
Mrs. Arthur Heilbron
Althea M. Cochrane
Ann Kleinschuster
Barbara Biewer
Mr. and Mrs. W.W. Henderson
Annette B. Stevenson
Bruce and Pat Fischer
Mary Vaughn
Mr. and Mrs. P.M. Klauber
Grace G. Klauber
Ed and Vel Landi

Claire L. Kaplan
Lee Douglas
Mr. and Mrs. George Murphy, Jr.
Mrs. R.C. Oetman
Mrs. Edythe H. Scripps
Janet H. Backer
Joseph Pollak
Ms. Connie Forest
Robert and Virginia Thorsen
Mr. and Mrs. D. Cleary
Mr. and Mrs. Rush Canon
Mr. and Mrs. Will Rudd
F.N. and Sarah W. Spiess
Col. L. Carlson
Dorothy East
Karla Holford
Mifflin Ward Family
Mary C. Sanders

MEMORIAL DONATIONS TO THE RESTORATION OF TEMPLE BETH ISRAEL

Mr. and Mrs. Bob Schaechlin
The Rolla Williams Family
Lee and Morrie Douglas

Mr. and Mrs. Gerald Feller
Mrs. Zel Camiel

NOTICE

VOLUNTEERS NEEDED

IN ALL AREAS!

CALL 222-3148

FOR MORE INFORMATION

SOHO Newsletter REFLECTIONS

Editor
Kathy Cogen

Photographer
Med Beauregard

SOHO OFFICERS 1980 1981

Carol Lindemulder
President

Larry Ford
Executive Vice-President

Ruth Padgett
Vice-President for
Governmental Affairs

Jan Kitchel
Vice-President for Education

Carole Frick
Secretary

Sally Johns
Treasurer

SOHO BOARD OF DIRECTORS

Carol Lindemulder
Larry Ford
Carole Frick
Charles Hellerich
Joe Jones
Matt Potter
Michael Sullivan
Pat Schaelchlin
Sally Johns
Donna Regan
Mary Dell Worthington
Jan Kitchel
Ruth Padgett
Joan Easley

Cathy Grigsby
Bruce Herms
Gwen MacFarland

P.O. Box 3571
San Diego, CA 92103

(714) 297-9327

The SOHO Newsletter is published monthly. Letters to the Editor are welcomed. Articles and/or photographs of interest to SOHO members and friends are most enthusiastically encouraged!



JANUARY



Wednesday, Jan. 7
7:30 p.m.

SOHO BOARD MEETING
For more information call 295-6188.
(Normally held the 1st Monday each month)

Tuesday, Jan. 6
1 p.m.

HISTORICAL SITE BOARD, City of San Diego
5th Floor Conference Room
City Administration Building
(1st Tuesday each month)

Thursday, Jan. 8
9:30 a.m.

VOLUNTEER MEETING, Gaslamp Quarter Association
Association Office/ 652 5th Avenue
For more information call 233-5227

Monday, Jan. 12
7:30 p.m.

UPTOWN PLANNERS
Central Federal Savings/ 610 W. Washington
For more information call 296-2577.

Tuesday, Jan. 13
7:00 p.m.

HERITAGE PARK MERCHANTS' ASSOCIATION
Heritage Park Restaurant

Tuesday, Jan. 20
12 noon

SAN DIEGO HISTORICAL SOCIETY BOARD
Villa Montezuma

Saturday, Jan. 24
12:30 p.m.

SOHO TOUR TO NATIONAL CITY
Meet at Robinson's east parking lot/ Mission Valley
For reservations call 222-3148, or write:
SOHO, P.O. Box 3571, San Diego, Ca. 92103

Monday, Jan. 26
9:30 a.m.

LECTURE SERIES:
San Diego - From the Gold Rush to Present Times
Old Town Opera House/ 4040 Twiggs St.(call 230-2445)

Wednesday, Jan. 28
3 p.m.

BOARD OF DIRECTORS MEETING (open to public)
Gaslamp Quarter Association
Athen's Market/ 414 E Street
For more information call 23-5227.

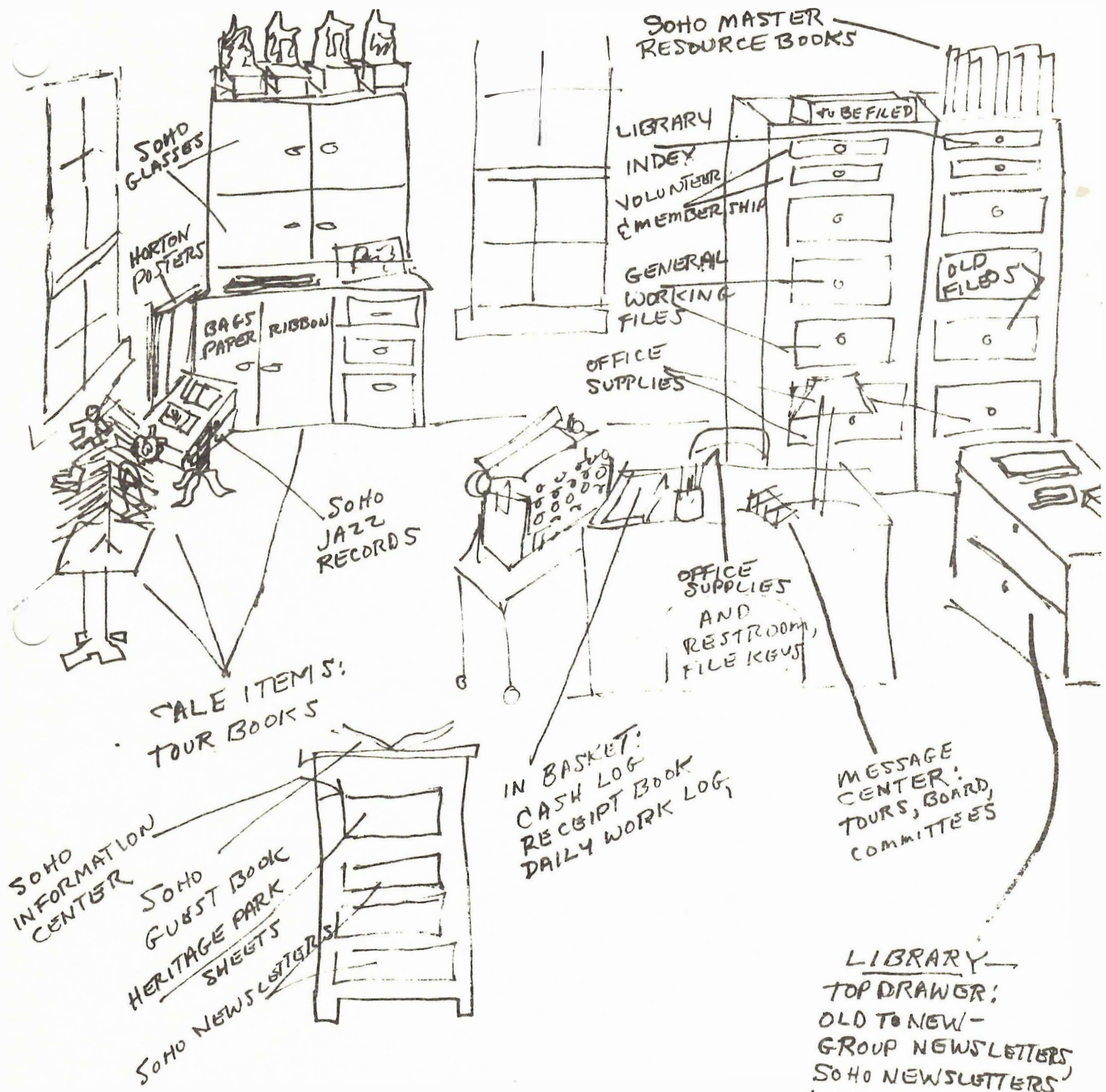
Wednesday, Jan. 28
11:30 a.m.

LECTURE SERIES:
San Diego - The Spanish-Mexican Era (1542-1846)
Mount Soledad Presbyterian Church
6605 La Jolla Scenic Drive South (call 230-2445)



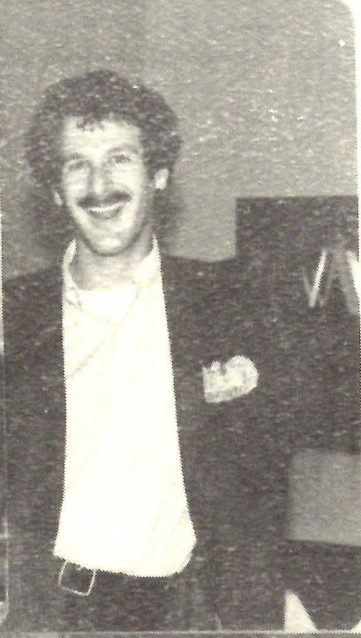
THE SENLIS COTTAGE - (see opposite page) is currently open to SOHO members and to the public. It has a library featuring reference books on restoration, documenting historic authenticity, listing a structure on the National Historic Register, past historic tours, architectural history in San Diego, and much more. In addition to the office, shown at right, there is also a sunny reading and research room, plus facilities for making yourself a cup of coffee. We hope your own efforts at preservation may be furthered by the information gathered in the Restoration Library.

The Senlis Cottage number is going to be 297-9327 as soon as its operating.



**1981 SENLIS COTTAGE
MASTER PLAN**

LIBRARY
 TOP DRAWER:
 OLD TO NEW -
 GROUP NEWSLETTERS,
 SOHO NEWSLETTERS,
 LIBRARY PAMPHLETS
 BOTTOM DRAWER:
 LIBRARY FILES OF
 ARTICLES, ETC.



RATNER
BUILDING

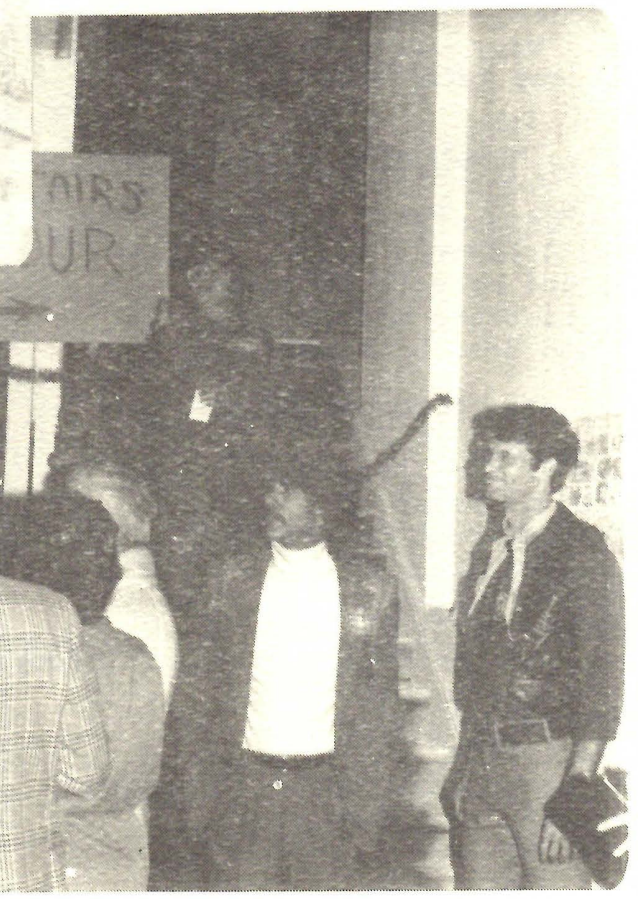
GASLAMP
QUARTER

DECEMBER 21
1980





SCHOOL CHRISTMAS PARTY



Carol's Corner

A new year has come, and 1981 sees SOHO approaching its twelfth birthday. In a recent number of conversations with San Diegans, from all walks of life and areas of our community, I have been asked repeatedly when or if our local preservation goals will be accomplished, and what I believe will be the outcome of the many local issues which have surfaced in 1980, and how they may affect historic preservation. These are difficult questions to answer.

In viewing SOHO's objectives along with what is happening in our City and County - issues like low income housing, the Convention Center, the Navy Hospital, and inflation - I find that SOHO has grown with the times, in many cases was even ahead of the times. The arguments of SOHO favor the re-cycling of historic buildings because - historic buildings can be made energy saving when recycled; they provide low income housing; they help revitalize areas like our downtown; and they allow private citizens to participate in the revitalization work. As such, they are labor-intensive and provide a cost savings as compared with the rising expenses of new construction. I am proud that SOHO has kept up with the times and the issues. Although we continue to lose some buildings, if we look all over the community, we find historic re-cycling is happening everywhere, in every community. We must applaud ourselves in being among the first to spread the message.

In light of the tremendous building projects in condo housing and commercial development, it becomes more and more difficult to preserve our historic past before the bulldozers get there. Politics and rapid development make the battles longer and more wearing. Preservation efforts stretch on and on, at times with no seeming end in sight.

Yet even now our membership ranks continue to grow, donations continue to come forward, and new faces press forward to join the battle. A battle it is. One which we must continue to fight because we believe in our organization and what SOHO has brought to the quality of life in San Diego. In this new year of 1981, I cannot promise you what we will save, or tell you how the issues facing San Diego will affect historic preservation - but I can promise you that all our efforts have purpose, and sound reasoning, and a support from our community which we must honor.

So stand tall, SOHO members, be proud of our efforts, and spread the word in the new year. I give you this quotation from one of the leaders of our times:

-John Kenneth Galbraith-

"Preservationists must never doubt that they are engaged in a public philanthropic and social enterprise and should never, whatever their political faith, be in the slightest apologetic." -



WORKERS CELEBRATE

AT HOLIDAY HOUSE-WARMING

December 5th SOHO workers gathered to toast in the holidays and celebrate the Cottage's opening. The party was even enlivened with a visit from old Saint Nick himself!

From right to left the members are Jan Kitchel, Beverly Horton, Mary Sanders, Mary Joralman, Alice Crittendon, and Ruth Padgett.

DECEMBER DONATIONS

Betty Goldberg
David Goldberg
Dale and Maryolive Shoupe
Mrs. Lawrence Klauber
Mr. and Mrs. L. Hayes

NEW MEMBERS

David E. Kessinger
Martin A. McDaniel
Laura and Rick Alexander
Elizabeth Brainard
Marguerite Zerbe
Marlene and Ted Hill
Barbara K. Stephen
Sylvia Arden
Peggy McCarroll
Michael Main
John M. and Carolyn W. Grossberg
Christina Faulkner
David Swarens
Vykki Gray
Lezlee Lord

NATIONAL CITY VICTORIANS VIEWED

Saturday, January 24, 1981

Meet at Robinson's East Parking Lot

Bus Tour to Leave from Mission Valley

For Reservations Call 222-3148, or

Write: SOHO, P.O. Box 3571,
San Diego, Ca. 92103

Members: \$9

Nonmembers: \$11

3½ Hour Guided Tour

Walking Through Homes

Being Driven Through Neighborhoods

Undergoing Restoration

Victorian Homes Tour



The Kimball Brick Row Is a Part of National City's
Heritage Square Development. Eleanor Ratner Bolen
Interviews One of Its Developers: Marc Tarasuck

One of the pioneers in Heritage Square development, Marc Tarasuck has lived in the Kimball Brick Row since 1973. He currently owns two units in the building, one as a residence, the second as business offices of Marc Tarasuck AIA & Associates. Tarasuck is probably best known to SOHO members as the organization's president during 1978, the year Senlis Cottage was moved to San Diego's Heritage Park. Tarasuck's business partner, Ted Foley, is also a former SOHO board member and was the organization's secretary.

"Historic buildings belong to the people," said Tarasuck. "The parklike setting for all the people justifies the city spending money on redevelopment. Living in a historic structure becomes less of a private experience. People are curious and want to know more."

According to Tarasuck, the Brick Row used to be a tenement. The surrounding neighborhood is urban with bars and adult theatres. During WWII, rooms were rented to the military. The houses had declined over the years until the neighborhood became a prime restoration area.

"It was still a neighborhood," he said, "an island in the middle of a city."

"As far as SOHO is concerned, you have to start within your own neighborhood," said Tarasuck. The Brick Row residents comprise a closeknit group for security and

Neighborhood Watch. They also belong together in the Brick Row Improvement Committee (BRIC).

"When the Heritage Square started, we were concerned about graffiti or vandalism," Tarasuck said, "but we have seen growth in civic pride. The city has gone out of its way to keep the area clean. The area is really a gem!"

NEWS BRIEFS

OUTCOME FROM MISSION HILLS POLL

ON FUTURE OF HERITAGE PARK REPORTED

In an effort to get a better understanding of the feelings of the residents in the vicinity of Heritage Park, a poll was taken by County Supervisor Jim Bates.

In response to the first question regarding the expansion of the park, 55% of those responding said that they would support an expansion limited to two or three more houses.

The questions concerning the traffic and parking problems of the area resulted in the following responses - 80% felt that parking and traffic presented difficulties that should be solved both in Heritage Park and the entire Old Town area.



MEMBERSHIP FORM

Please complete and return this membership form to:

Save Our Heritage Organisation
Post Office Box 3571
San Diego, California 92103

SOHO depends upon membership dues, contributions, and fund raising activities to support our restoration/preservation expenses. Members receive the monthly SOHO Newsletter and invitations to special events. Gift memberships are available and we will send the recipient a card in your name announcing the gift. Memberships and donations are tax deductible. Please join us!

MEMBERSHIP CATEGORIES

Benefactor	\$1,000.
Patron	\$100.
Corporate	\$50.
Professional	\$25.
Family	\$15.
Single	\$10.
Donation	\$ _____

Name _____

Address _____

City _____

Zip Code _____ Phone _____

Add my name to your Volunteer List _____

I prefer the following types of activities: _____

TAX EXEMPT STATUS

SOHO is exempt from Federal Income Tax under Section 501(c)(3) of the Internal Revenue Code and has been classified by the I.R.S. as a charitable, educational organization.



P.O. Box 3571
San Diego, CA 92103

NONPROFIT ORG.
U. S. POSTAGE
PAID
SAN DIEGO, CALIF.
PERMIT NO. 984

address correction requested
return postage guaranteed