



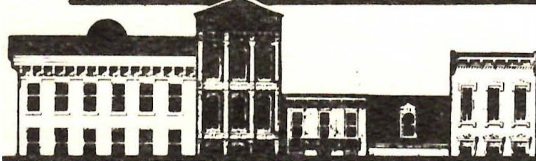
# THE S.O.H.O. NEWSLETTER

# REFLECTIONS

VOL. XII NO.5

MAY 1980

P.O. BOX 3571 SAN DIEGO, CALIFORNIA 92103 (714)222-3148



## National Preservation Week May 11-17

It's National Preservation Week again -- an annual time set aside to recognize outstanding preservation efforts, and to make more Americans and San Diegans! aware of the preservation movement and its contributions to the quality of life in every community.

The theme of National Preservation Week, 1980 is "Preservation: Reusing America's Energy", and this year is co-sponsored by the U.S. Department of Energy. The message is three-fold: 1) old buildings are a past investment of energy; 2) old buildings can be renovated for greater energy efficiency in their operation, and 3) new technology like solar power, for example, can be used in many old buildings without destroying their historical and architectural characteristics.

Look downtown this week at the Knights of Pythias Building at 3rd and E, which has housed the Community Arts complex, as a good example of adaptive reuse. Look at the Lyceum and Horton Hotels -- all freshly painted, and beautifully too. Gaslamp is blooming, albeit too slowly for some, into a showy flower. All around us we see examples of positive preservation-- both public and private. Paul Thoryk's Soledad Franco Restaurant in the newly renovated Columbia Square is a showplace. Ted Krauss' offices at Front and Fir, an early-on example of preservation in action. Parker Industry's on-going rehabilitation in the spectacular Long-Waterman House at First & Kalmia, and of course, the lovely new bed and breakfast remodeling of the Britt House at Fourth & Maple.

SOHO is doing its part in the new wave of the 1980's -- revitalizing old, historically significant structures, and raising the consciousness of city and county officials to the idea of community preservation. On May 16th, SOHO is providing a public service tour for members of local and state government, planning groups, educators and business leaders. This Historic Resources Bus Tour will cover Gaslamp, Golden Hill, Bankers Hill, Balboa Park, Middletown and Heritage Park, and will provide these professional people with information on locally historic structures and resources before they become embroiled in battle over demolition somewhere down the line.

We are also an integral part of Heritage Park and the newly rehabilitated Senlis Cottage is soon to house our offices. In addition, we have just entered into negotiations to purchase the historically significant Matthew Sherman House at 422 19th Street. This is the first residence built by Captain Matthew Sherman in 1868, and was the first newly constructed house in Horton's New San Diego. According to The Journal of San Diego History, Fall, 1972, "... it is probably, the one and only existing example of 1860's Gothic Revival architecture in San Diego today."

These are exciting times for preservation, and SOHO is becoming a major force. Come get involved. We need all of you. Celebrate the week by taking a drive around and look at what we have. Spring is here!

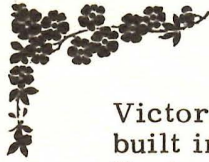


# NEWS BRIEFS

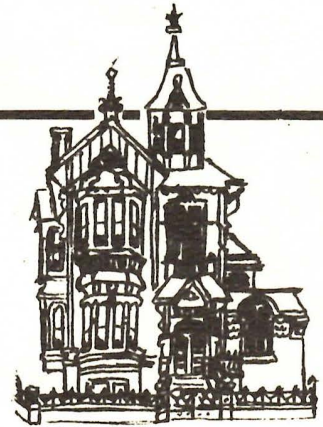
## new members

A warm welcome is extended to the following new members:

Shari L. Enz  
Beverly A. Horton  
Dorothy L. Haggard  
Max D. Gilbert  
Judy & Bob Heyer



Victorian House for Sale,  
built in 1893, 841 20th St.  
Broker. Vanion, 222-3946



Dear SOHO Members:

Does a train tour to San Juan Capistrano tickle your fancy? Does a bus tour of historic Redlands capture your interest? Do you feel that a SOHO historic structure tour of La Mesa is overdue?

SOHO is currently planning a variety of 1980 historic preservation tours. We'd like to explore untrodden and outlying areas and use varied tour formats and methods of transportation. If a nearby area stirs your imagination with its historic charm you may be interested in organizing a small tour of that spot with the help of SOHO volunteers. To date, the following SOHO members have volunteered to chair historic tours:

Jan Kitchel: May 16th Historic Resources Tour for civic leaders and planning groups.  
Harry Evans: Bus tour of historic Redlands.  
Joan Easley: San Juan Capistrano train tour.  
Bruce Herms: La Mesa historic structure tour.  
Mary Joralmon: Los Angeles train and bus tour.  
Bruce Herms: A weekend in historic Los Angeles which will include walking tours and an evening theatre performance.

We look forward to your participation in SOHO tours and welcome new tour ideas with volunteers to implement them. For more information, please call Cathy Grigsby at 295-0204 or the SOHO office.

Happy Trails,  
Cathy Grigsby  
Education Chairperson

### SOHO Newsletter REFLECTIONS

Editor  
Carole Collier Frick  
298-2237

Photographer  
Med Beauregard

#### SOHO OFFICERS 1979-1980

Carol Lindemulder  
President

Nicholas Fintzelberg  
Executive Vice-President

Cathy Grigsby  
Vice-President for Education

Larry Ford  
Vice-President for  
Governmental Affairs

Cia Barron  
Secretary

Harry Evans  
Treasurer

#### SOHO BOARD OF DIRECTORS

Claire Crane  
Joan Easley  
Carole Frick  
Charles Hellerich  
Joe Jones  
Matt Potter  
Pat Schaelchlin  
Michael Sullivan  
Mary Ward

Bruce Dammann  
Bruce Hermes  
Sally Johns

P.O. Box 3571  
San Diego, CA 92103

(714) 222-3148

The SOHO Newsletter is published monthly. Letters to the Editor are welcomed. Articles and/or photographs of interest to SOHO members and friends are most enthusiastically encouraged!



### MEMOS ON MEMBERS

Our founder, Miles Parker, is recuperating at home after surgery at Sharp Hospital. All of SOHO's membership wishes him a speedy recovery and a fun spring.

Welcome to Lois Haselton, who is SOHO's new Ways & Means Chairman, and to Gwen McFarland who will be her assistant. We are expecting great things from these two most able members of SOHO's family.

### SEMINAR NEWS

The American Association for State and Local History is pleased to announce three 1980 seminars on the "Interpretation of History by Historical Societies and Museums." The seminars are supported by the National Endowment for the Humanities and are designed to help historical agency personnel improve their abilities to present history to the public. The first seminar begins in July. Call SOHO for further information and application forms.

AASLH Seminar on the Interpretation of History by Historical Societies and Museums--Western Region

Dates: July 27-August 7, 1980. Host: Idaho State Historical Soc.  
Boise, Idaho

A general seminar on such interpretive programs as exhibits, publications, oral history, education, audiovisual presentations, and others. Includes discussions of historic sites, special audiences, public relations, and volunteers. Admission by fellowship only. Twenty beginning professionals from historical agencies west of the Mississippi River will receive fellowships of up to \$225.00 for travel and maintenance costs.

Registration Fee: \$50.00 Application Deadline: May 27, 1980

JOIN THE FIGHT TO SAVE FLORIDA CANYON!



USA BULLET 1979

The September ballot measure to give more parkland to the Navy on a leasehold failed. The City Charter requires two-thirds approval to give away parkland. Nevertheless, the Navy, encouraged by Mayor Wilson and Congressman Wilson to ignore the Charter requirement, condemned land in Balboa Park's Florida Canyon.

Mayor Wilson now says that the Navy is "Bullying" San Diego. We agree. Navy officials have violated agreements the Mayor thought he had with them calling for a leasehold, and also for the return of 39 acres of parkland presently occupied by them. No leasehold is now offered by the Navy and no return of land! Instead, the Navy has offered to buy the condemned land for \$3.7 million -- only 1/10 of what it was valued at 20 years ago!

If you are outraged by these developments, take action! You can save Balboa Park for park development. Congress has not appropriated any funds for construction and is reconsidering cost factors and alternative sites. Encourage the Navy to build a new hospital outside Balboa Park.

JOIN the Balboa Park Defense Fund. Send your contribution to:  
Balboa Park Defense Fund  
Don Reeves, Treasurer

835 Fifth Avenue, San Diego, CA 92101  
Help pay legal costs!

WRITE your elected officials. YOU CAN make a difference!

Mayor Pete Wilson

202 C Street, San Diego, CA 92101

Senators: Alan Cranston  
S. I. Hayakawa  
Gary Hart

Senate Office Bldg., Washington, DC 20510

Congressmen: Lionel Van Deerlin  
Clair Burgener  
Gunn McKay

House Office Bldg., Washington, DC 20515

SEND a MAILGRAM: 50 words for \$2.80. Call Western Union, 236-9338.

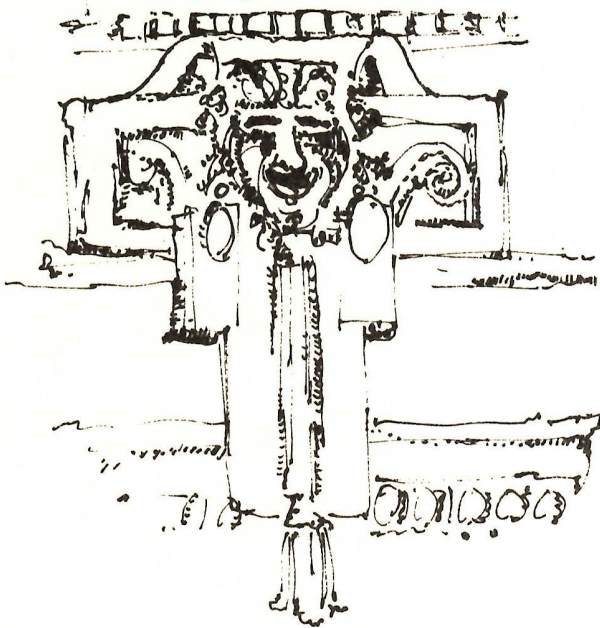
--Carole Frick



"We like to think of it as a partial victory for the forces of historic preservation."

DESIGNERS SHOWCASE 1980

ARCHITECTURAL DETAIL -  
SPRECKLES BUILDING



The Designers Showcase gets better every year. The beautiful home on Suset Cliffs Blvd., (built by John P. Mills in the 1920s) qualifies as the "showplace of showcase homes." It is the "roaring 20s" success of the "Spring of the 80s." The public was privileged to visit this Italian Renaissance mansion and have the opportunity to enjoy the creativity of the designers, craftsmen, and artisans.

A very special thanks is due to all the SOHO Hosts and Hostesses who staffed the showcase house each Saturday:

- |                   |                      |                    |
|-------------------|----------------------|--------------------|
| Martha Atwell     | Margaret Ham         | Patrishia Rutledge |
| Barbara Biewer    | Phil Ham             | Laurie Rutledge    |
| Norma Hidalgo     | Pat Schaelchlin      | Marcie Buckley     |
| Jerilyn Jones     | Nettie Scarry        | Eleanor Bolen      |
| Barbara Klauschie | Carol Sebastian      | Bill Bolen         |
| Robert Klauschie  | Ellen Smothers       | Dorothy Cleary     |
| JoLynn Kolk       | Derdra Smothers      | Marilyn Crehore    |
| Jean Kearney      | Ethel Siegelman      | Alice Crittenden   |
| Carol Lindemulder | Sue McMillian        | Anne Dring         |
| Judy McCutcheon   | Marc Tarasuck        | Carolyn Foushee    |
| Gwen McFarland    | Sunny Tarasuck       | Ted Foley          |
| Ramola McKenney   | Camilla Percival     | Betty Fraser       |
| Zenda Norte       | Arlene Watters       | Gini Garrison      |
| Dorothy Muth      | MaryDell Worthington | Cathy Grigsby      |
| Donna Regan       | Fran Wager           | Dorothy Griner     |
| Hazel Risher      | Cheri Felfe          | Martie Rice        |
| Beverly Rothwell  |                      |                    |

And to all those called (and called and called) and were not contacted, a sincere thank you for the many times you have served in the past. You'll be called again (and again and again).

Claire Kaplan  
Host/Hostess Chairman

CAROL'S CORNER

1980 has seen a new historic era emerge, the preservation of energy, historic by its very significance to our lives, and the life of our earth.

Ride-sharing, low thermostats, and the re-cycling of aluminum cans will become history, as will the energy savings brought about by re-cycling of our historic structures.

The energy saved by re-cycling an historic building can be specified as the non-necessity of using heavy equipment for demolition, for building multi-stories in concrete, steel and glass. Energy saved would also include the energy embodied in all those new materials, as well as all the energy wasted in those original materials lost in demolition. It is worth remembering that restoration still requires man-power, a recycling of human energy.

National Preservation Week, May 11th through May 17th, has as this year's theme: "Preservation-Reusing America's Energy." A number of statistics have been put forth which show us how to compute energy in a building. This information can be found in land-use maps, tax records, and insurance maps. (These figures do not include energy used in demolition, streets, sidewalks or utilities, but do provide an idea of how much energy existing buildings represent).

Multiply the square footage of each structure by the following factors: single family house-5.48; two to four family house-4.93; store-7.36; church-9.87 and a school-10.89. For example, the Matthew Sherman House at 19th near Island, now a two family residence, of about 1500 sq. feet, would have an embodied energy equivalent of 7,395 gallons of gas (1500 x 4.93). Buildings accounted for 32% of all energy consumed in the United States in 1977, Industry 43% and Transportation 25%. Of this 32% for buildings, 63% accounts for residential, 37% non-residential.

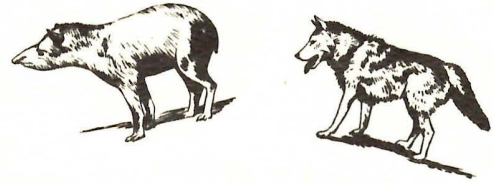
Now when you talk preservation, talk about energy conservation.

--Carol





# WILD ANIMAL PARK



HAVE A WILD TIME WITH SOHO! July 18 at the WILD ANIMAL PARK. Thanks to Barbara Klauschie, we have just 39 tickets. Come out and growl with the lions, howl with the hyenas. Bring your own picnic supper or snack at the Mombasa Cooker. The Safari bus (Grayline Charter) leaves north end of parking lot behind organ pavilion at 5:00 p. m. sharp, and returns at 10:30 p. m. To reserve your place with SOHO's wildest, send your check for \$8.00 (made out to SOHO) to Joan Easley, 3147 Front St., San Diego, CA 92103. For more information, call Joan at 295-6146 or Clare Crane at 454-5950.



## GETTY MUSEUM TOUR



On Saturday, June 14, the La Mesa Historical Society will sponsor a tour to the J. Paul Getty Museum in Malibu. The tour will leave La Mesa at 7 a. m. and return by 6 p. m., with a pick-up stop in Mission Valley.

The J. Paul Getty Museum contains one of the finest collections of Greek and Roman antiquities, Baroque and Renaissance paintings and 18th century decorative arts. These collections are housed in a magnificent reconstruction of the Villa dei Papiri-- a Roman seaside villa that was buried in volcanic mud when Vesuvius erupted in 79 A. D. destroying both Pompei and Herculaneum.

Luncheon, which is available in a cafeteria-style tea room located on the museum grounds, is not included in the price of the tour.

The cost of the tour is \$17.00. The deadline for reservations is June 2; however, space is limited and the tour may fill before that date. Please make your check payable to La Mesa Historical Society and send it with a self-addressed stamped envelope to LMHS Tour, 8671 Tulare St., La Mesa, CA 92041. For information call Dorothy Griner or Donna Regan, 460-372.

## USD SUMMER EXTENSION COURSE

June 7 to July 26

Introduction to Preservation and Conservation. The course is designed to provide basic instruction in the theory of conservation and practice of conservation techniques. An understanding of the chemical and physical properties of building materials will be taught, as well as the nature and causes of their deterioration. The latest procedures for the examination and treatment of building materials will be explored, including knowledge of the skills required to repair deterioration. Students will receive training in examining materials, estimating their original appearance and condition, recording the results of their examination, evaluating physical changes occurred by deterioration, prescribing a procedure for preservation and treatment, and employing those measures or treatments for preservation. Saturday, 8:30 to 12:00. George T. Szabo, AIA, Architect.

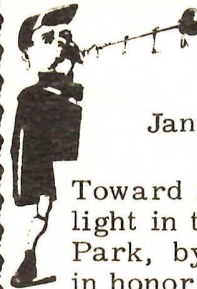
### Course Outline

- |                               |  |
|-------------------------------|--|
| 1. Introduction               | 5. Roofing Materials                         |
| Approaches to Preservation    | Waterproofing                                |
| Definitions                   | Rising Damp                                  |
| Causes of Deterioration       | 6. Stripping & Painting                      |
| 2. Cleaning Buildings         | Monitoring & Interpreting Cracks             |
| Understanding Basic Materials | 7. Procedures & Methods of Documentation     |
| Stone Concrete                | Structural Analysis                          |
| 3. Masonry                    | 8. Energy Conservation of Historic Buildings |
| Mortar                        | Maintenance                                  |
| Plaster                       |  |
| 4. Wood                       |  |
| Metals                        |  |
| Epoxy Materials               |  |

For further information call the University of San Diego at 293-4585.



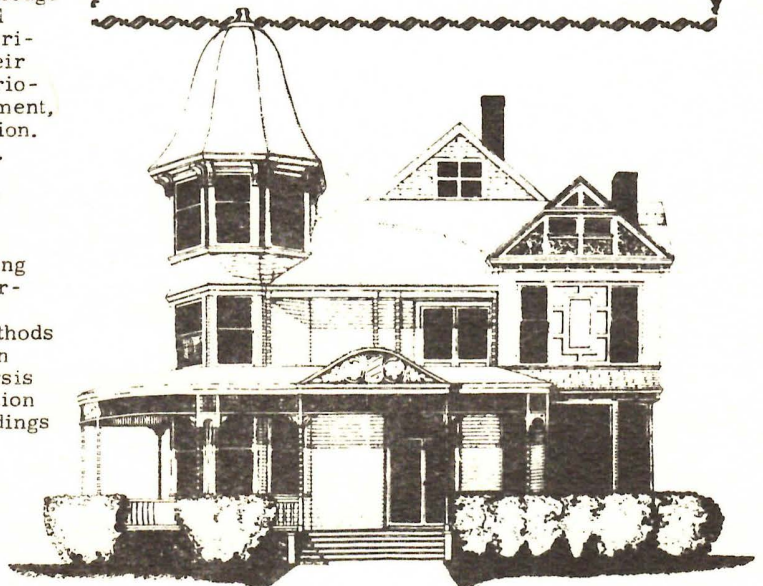
## DONATIONS



Janet H. Backer

Toward restoring the perpetual light in the temple at Heritage Park, by Lee and Morrie Douglas in honor of Carl M. Esenoff.

## SOHO Thanks You!





# MEMBERSHIP FORM

Please complete and return this membership form to:  
Save Our Heritage Organisation  
Post Office Box 3571  
San Diego, California 92103

SOHO depends upon membership dues, contributions, and fund raising activities to support our restoration/preservation expenses. Members receive the monthly SOHO Newsletter and invitations to special events. Gift memberships are available and we will send the recipient a card in your name announcing the gift. Memberships and donations are tax deductible. Please join us!

### MEMBERSHIP CATEGORIES

- Benefactor . . . . \$1,000.
- Patron . . . . \$100.
- Corporate . . . . \$50.
- Professional . . . . \$25.
- Family . . . . \$15.
- Single . . . . \$10.
- Donation . . . . \$\_\_\_\_\_

Name \_\_\_\_\_

Address \_\_\_\_\_

City \_\_\_\_\_

Zip Code \_\_\_\_\_ Phone \_\_\_\_\_

Add my name to your Volunteer List \_\_\_\_\_  
I prefer the following types of activities: \_\_\_\_\_

### TAX EXEMPT STATUS

SOHO is exempt from Federal Income Tax under Section 501(c)(3) of the Internal Revenue Code and has been classified by the I.R.S. as a charitable, educational organization.



P.O. Box 3571  
San Diego, CA 92103  
(714) 222-3148

NONPROFIT ORG.  
U. S. POSTAGE  
PAID  
SAN DIEGO, CALIF.  
PERMIT NO. 984

4/75  
Phillip & Alice Crittenden  
1890 Sheridan Ave.  
San Diego, CA 92103

address correction requested  
return postage guaranteed