

REFLECTIONS

January 1978

Vol. X, No. 1

Newsletter of the
Save Our Heritage Organisation

PRESIDENT'S MESSAGE

Dear Members,

I've been holding up the presses for the last week in hope that I could report that "SOHO SAVES AGAIN" in this issue of Reflections --- and I can!

SOHO is now the owner of one of the finest Victorian Cottages in San Diego. Mr. Will Hippen, Jr., the Honorary Consulate General of Japan at San Diego, has donated to us the 700 square foot structure now located at 1536 Second Avenue. This cottage has been recommended by the Cultural Heritage Committee for inclusion in Heritage Park.

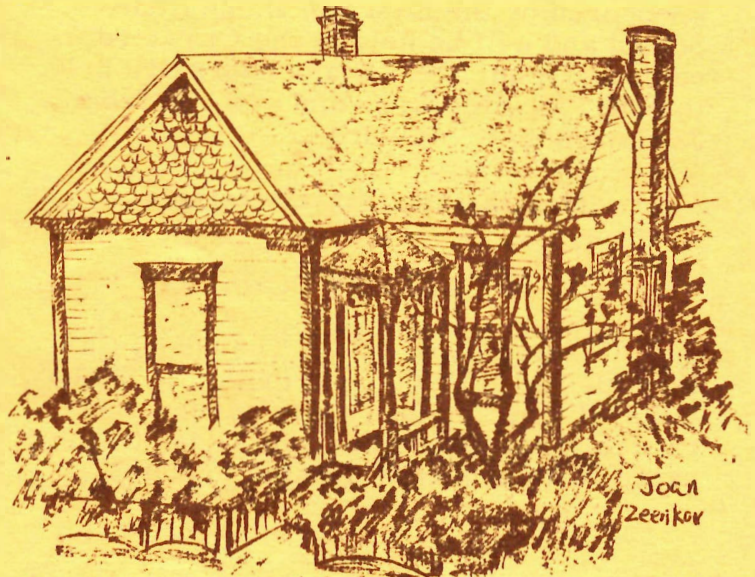
SOHO is committed to moving the cottage to Heritage Park by March 1st at a cost of \$6,250. A big task, but not an impossible one! SOHO members and friends have always met this challenge in the past. The Sherman-Gilbert House, now the symbol of all restoration efforts in San Diego County, was SOHO's commitment to the preservation of our heritage. -- We planted the seed for the concept of a Heritage Park and that seed has grown into one of San Diego's show-places and link to our past.

Nicholas Fintzelberg, as Heritage Park Chairman for SOHO, has appointed Mary Ward to head up the House Moving Committee. They have the almost overwhelming job of raising the \$6,250 in this next month. I ask that each of us get behind this major project and contribute

whatever we can to raise this money. If every member in SOHO gave \$10.00, we would have no trouble in fulfilling our objective. This is an opportunity for all of us to say "I helped move a building to Heritage Park." Please send your tax deductible contribution to SOHO-Housing Moving, P.O. Box 3571, San Diego, CA 92103.

Help show that SOHO SAVES!

Marc Tarasuck



GENERAL MEETING

The SOHO Office at 546 Market St., will be the site for the first General Meeting of 1978 on February 5th at 1 P. M. The State of SOHO Message will be delivered along with a presentation on Heritage Park by members of the Cultural Heritage Committee, and the Parks and Recreation Department. Let's reaffirm our commitment to the Gaslamp Quarter by joining in the meeting at SOHO's new headquarters. Please bring cookies to share!



SOHO SADDLES COUNCIL FOR \$25,000 FOR GRANGER MUSIC HALL

One of my proudest moments while being President was early this month when 18 Board Members marched down to the National City Council Meeting in support of using Block Grant Funds for the continued restoration of Granger Music Hall. With Bruce Kamerling, Keith Evans, and myself speaking for SOHO, we helped convince the council to allocate \$25,000 next year for restoration for the hall. What an impact on the Council Members when the SOHO group stood up in unison!

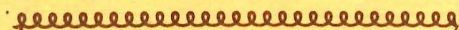
It will be a great year for SOHO.
Join in!

Marc Tarasuck

.....

SAN DIEGO HISTORY CLASS

Rick Kallis and Richard Carrico will teach a class covering San Diego's history, from prehistory to the present. The class, featuring slide lectures and field trips, is sponsored by the East San Diego Adult School and will be held at the Crawford campus, room 310. Class hours are 6:30 to 9:30 PM, Mondays, and will run from January 30th to May 3rd.



GLASS GALLERY DONATION

A hearty thank you to The Glass Gallery for the \$113.00 contribution to SOHO! A floral motif stained glass window was raffled at the December 10th Glass Gallery party, with proceeds donated to SOHO.

LETTERS TO THE EDITOR

For those of you who would like to alert other SOHO members to deeds that need doing, viewpoints that need airing or questions you would like answered--SOHO's Reflections is providing a monthly space for your written expression. Contribute to Reflections Letters to the Editor's column! Send your letters to:

Save Our Heritage Organisation
Box 3571
San Diego, CA 92103



SOHO BRIEFS

Julian a Historic Site

As part of an effort to save 26 turn-of-the-century buildings and historic sites in the mountain community of Julian, the San Diego Board of Supervisors has designated Julian as an historic district in the final amendment to the county general plan for 1977. The land use amendment for Julian sets guidelines for the preservation of 26 buildings dating between 1870 and 1913. It stipulates that surrounding future development be compatible with existing historic structures and sets density limits.

Dick Reed

SOHO's Dick Reed is producing a photographic book on the renaissance of U.S. center cities tentatively titled "Return to the City." The book will cover some 25 cities on Dick's recent tour of the U.S., and will pay particular attention to San Diego. He has just signed a contract with Doubleday for the publication.

Courthouse

Recently designated a historic site, the old U.S. courthouse at 325 West F St., in downtown San Diego, will house the Immigration and Naturalization Service. Long ago, the courthouse building served as a postoffice and customs building. Because the building is a historic site, the exterior appearance cannot be altered by its new tenants although there will be some modernization in the building's interior.

HISTORIC LA MESA HOUSE MUST BE MOVED

by Donna Regan

One of La Mesa's finest examples of California bungalow architecture must be moved within the next month if it is to escape demolition. The house, which stands at the southwest corner of Fourth Street and Lemon Avenue, is currently owned by Dr. C. J. Padfield. Dr. Padfield, who plans to develop the property as an apartment site, has expressed his willingness to sell the house to whoever might be able to move it.

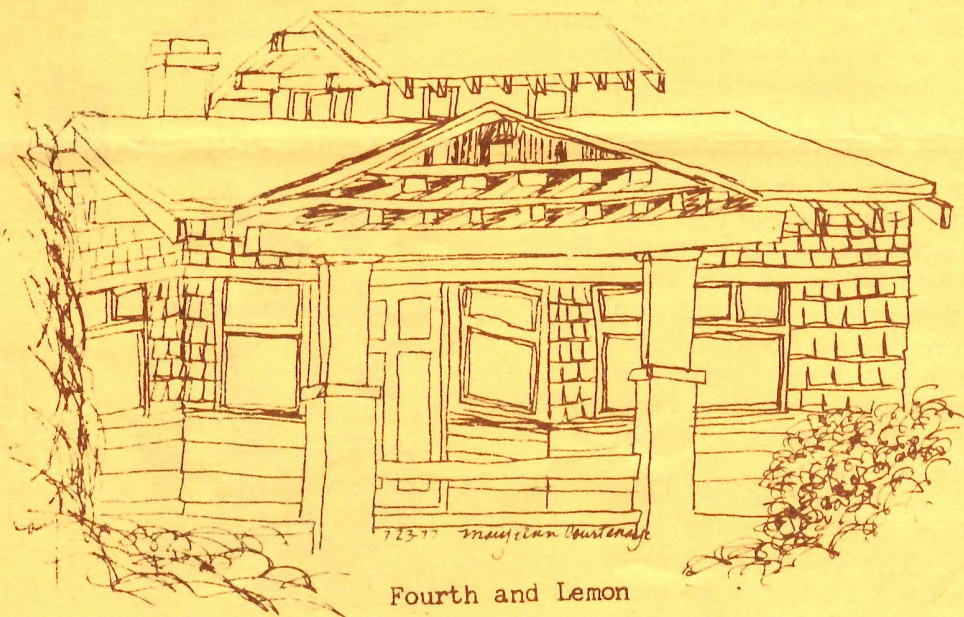
The house has been described by Bruce Kamerling, former president of the Save Our Heritage Organisation (SOHO), as "an almost perfect example of a California bungalow." This architectural style which developed in this country around the turn of the century, is generally characterized by wide eaves with projecting rafters; a broad low-pitched roof; wide porches and verandas; shingled walls; and an emphasis on the horizontal. These elements were used in both simple and elaborate houses and culminated in the designs of the celebrated Pasadena architects Charles and Henry Greene whose best known work is the 1908 Gamble House.

The La Mesa house has shingled walls, two porches, and a porte-cochère. The story-and-a-half structure contains 7 rooms, including two to three bedrooms. The interior has remained generally intact, still retaining the original woodwork (although now mostly painted), hardware, and other fixtures.

The evidence of early photographs indicates that the house was probably built between 1912 and 1915. According to Mrs. Lamoureux, who has lived on Fourth Street since 1924, the house was first owned by a family named Scott, who in the 1920s built and moved into the house across the street on the southeast corner. The Benton family owned the house from the 1920s until a few years ago; Laura Benton is remembered as a teacher in La Mesa schools.

Anyone who is interested in moving this house should contact Dr. Padfield at 466-7243.

This article first appeared in the September 1977 issue of the La Mesa Historical Society's Lookout Avenue.



Fourth and Lemon

SUPERVISORS ACCEPT TEMPLE FOR HERITAGE PARK

by Henry Schwartz

On December 13, 1977 the Board of Supervisors accepted the original Temple Beth Israel, now the Fraternal Spiritualist Church, at Second and Beech Street for removal to Heritage Park.

The historic edifice will be moved this summer. The County has funds for the moving. However, public support will be needed for the restoration.

The interior will have numerous useages, such as conferences, exhibits, youth activities, weddings, musicals and poetry readings, as well as a museum on the history of local churches.

Congregation Beth Israel, which has the building in escrow, offered its first edifice in San Diego to the County of San Diego as a gift. It is the oldest synagogue building in Southern California and the oldest in California on its original site. It is Historic Site No. 82.

Four faiths have worshipped there. From 1889 to 1926 it was a Reform Temple. The Jews shared it with the Universalist in 1893 and 1894. Between 1895 and 1906 it was shared with the Christian Scientists, who knew it as the First Church of Christ, Scientist. In 1938 it became the Fraternal Spiritualist Church.

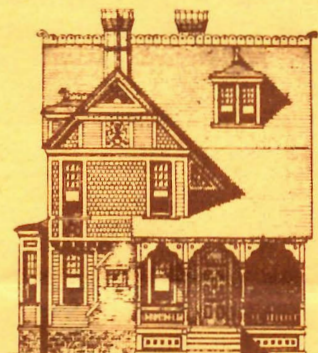
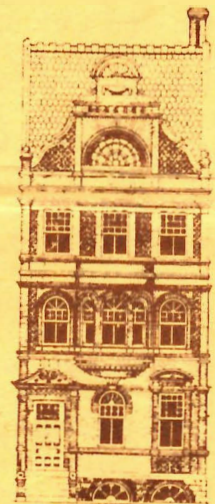
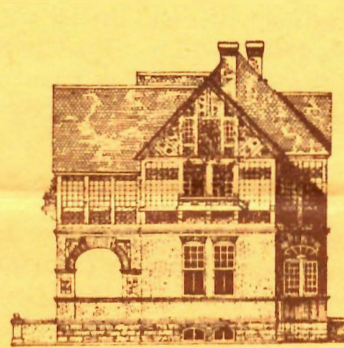
The temple, first used on the eve of the Jewish New Year, September 25, 1889, is basically unchanged. A later add-on, a romanesque front portico, will be removed, and a missing wooden column, representing the Ten Commandments, replaced at the pinnacle.

Victorian in architecture, Temple Beth Israel is similar to other gable churches of its era, except for the distinctive, embellished square front. Built of redwood, it is 30 by 56 feet in size. Originally the exterior was painted light brown with 'chocolate' trimmings.

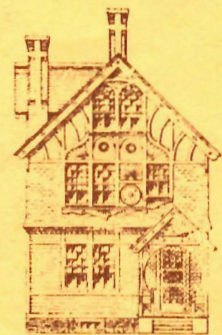
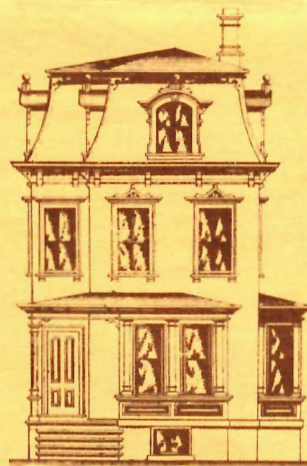
The facade has five circular windows, plus one on each side, embedded with the Star of David. Gingerbread repeat patterns decorate the front.

Entrance is through a recessed doorway with pillars with cut glass in a spray design above. The vestibule has two ante-rooms with a stairway to the loft.

A detailed description of the exterior and the interior that appeared on Sept. 25, 1889 in *The Daily Sun* and a photograph taken about 1894 will aid in the restoration. Additionally, Congregation Beth Israel has saved remnants from the original structure.



Front Elevation



Front Elevation

DOC'S FIX-IT
by Doc Evans

For many years as an active SOHO member, I have answered phone calls on SOHO's answering service concerning specific problems restorationists had, often going out to members' homes or prospective purchases to offer consultation and/or assistance. In this issue I am introducing a write-in column, whereby SOHO readers may inquire on specific construction problems and share the answers with other SOHO readers.

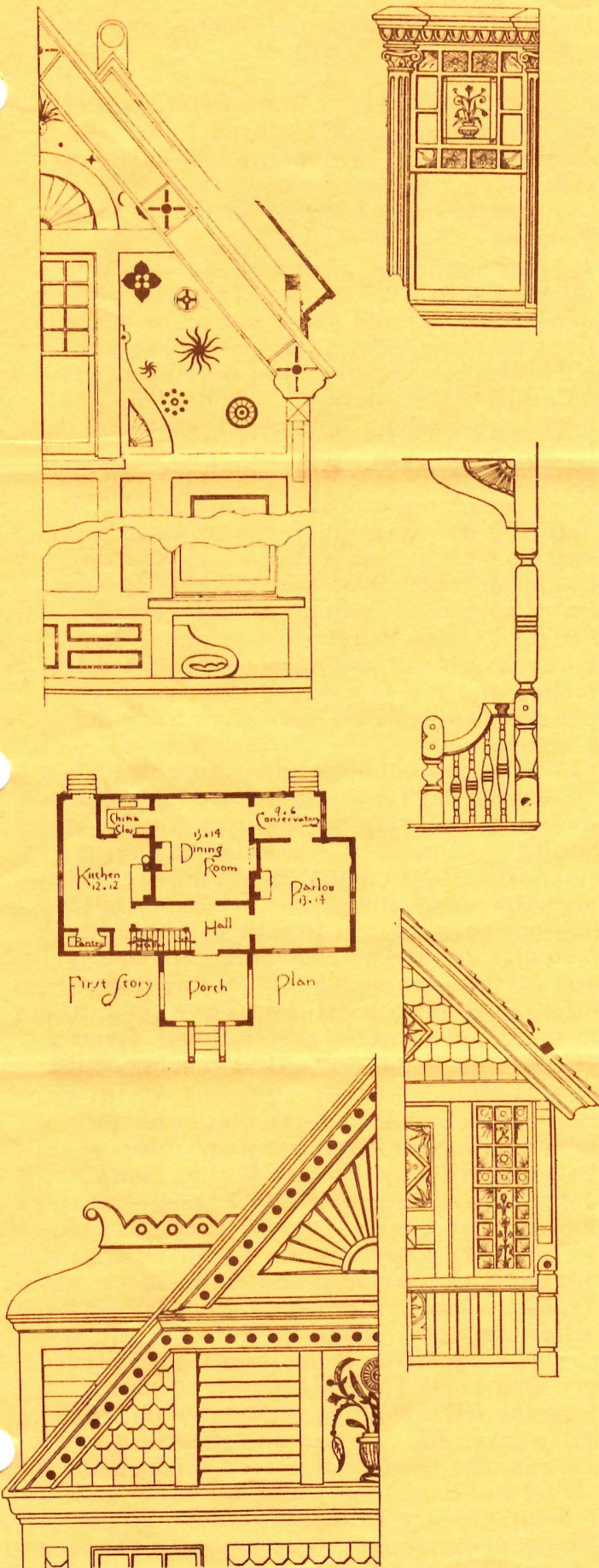
Recently I was asked to advise a renter on how to reactivate the fireplace in their 'old' house. This is a common and highly inflammable problem. In this case, the house was a 1910-1920 Gill-style duplex. The fireplace was for show only. It had a vent suitable for a gas heater which was no longer in use. If you want to build a fire in your Victorian--don't! The mortar will be bad! Have the mortar inspected. Many houses have perished because of cracks in the chimney; the Quartermas-Wilde House is an example of such a near-disaster (it was saved). Some adventurers, located at 20th & G, removed the entire chimney and replaced it.

My solution would be:

1. Put a thin, metal chimney down the existing chimney.
 2. Fill the area around the metal chimney with rebar and concrete.
- The city building inspector was divided on this idea a few years back.

Most of the Victorian fireplaces were for gas or coal, not a yule log. With a little alteration, they can heat a house far better than a typical modern fireplace.

Feel free to write in with your problems. If you discover a disreputable looking individual on your doorstep soon after, you may have stirred his curiosity!

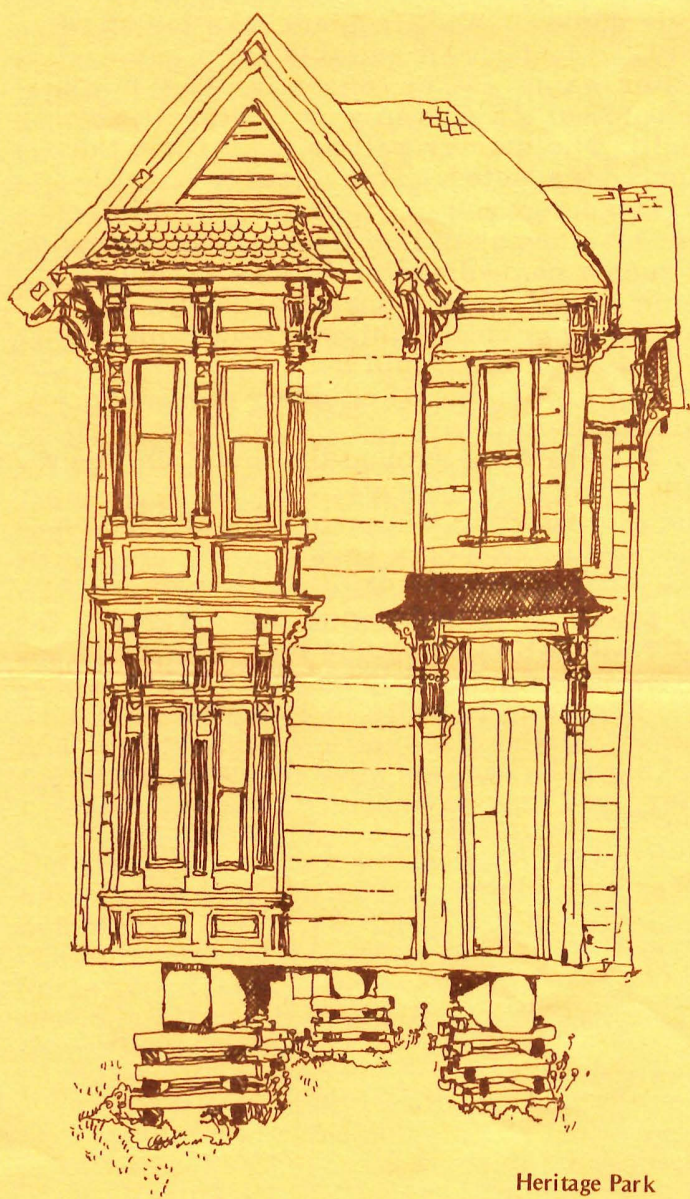


DEAR SOHO READERS:

SOHO has been privileged to be headed by a colorful assortment of presidents--each dynamic and resourceful in his or her unique way, since its inception in 1969.

The installation of SOHO's new board members in September 1977, invited retrospection on how SOHO has evolved in eight years as well as speculation on its future growth. It seems timely to present a series of articles written by SOHO's past presidents reflecting on their own as well as SOHO's community involvement.

Cathy Grigsby



Heritage Park

Matt Pette

REFLECTIONS

By Barry Worthington, SOHO President
1971-1973

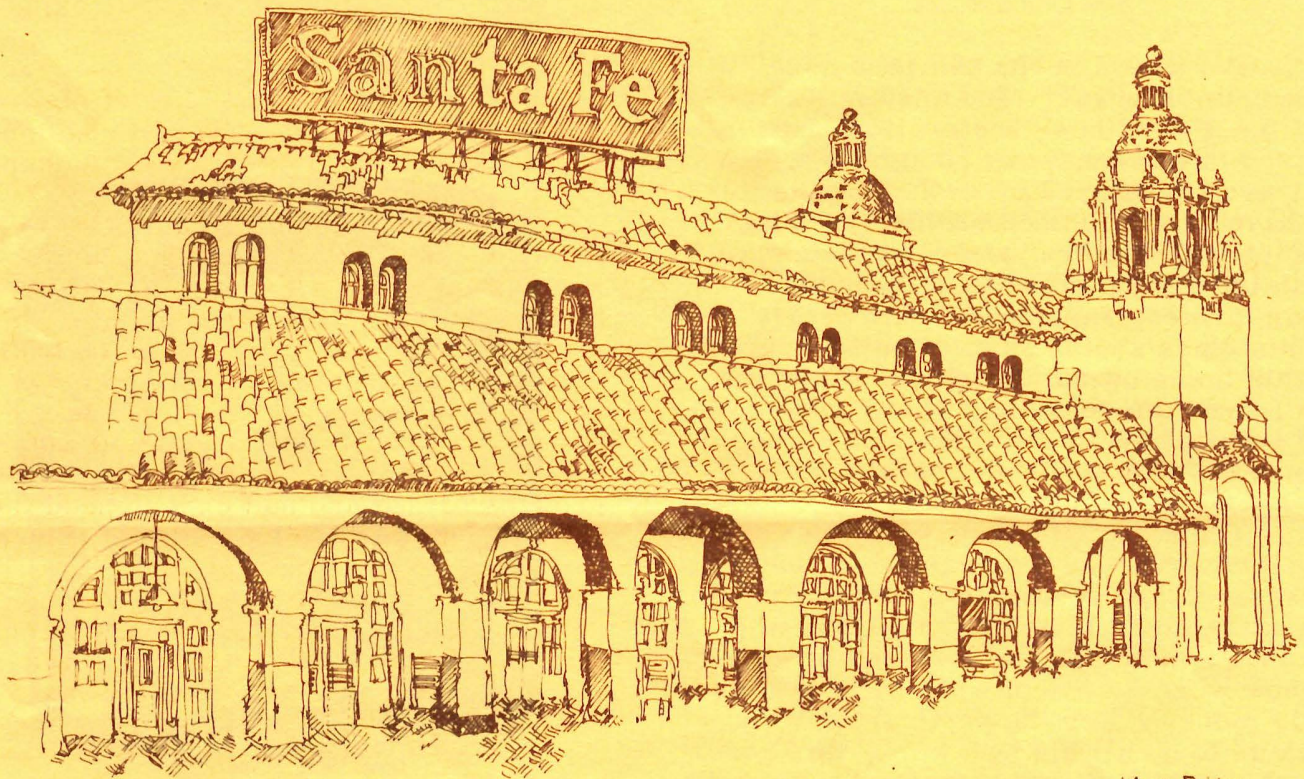
When asked to write a brief history of my term in office as third President of SOHO, many wild memories suddenly came flying back to me.

One must remember that SOHO was growing and still maintained a very special quality of closeness among its membership in obtaining its goals. In order to reach the goals stated by SOHO's first two presidents, Miles Parker and Nicholas Fintzelberg, the board was considering a presidential candidate who had been with SOHO a long time, knew its growing pains, and had experienced the ins and outs of decision making. Since I had been on the board a while, I really believed this was the reason I was nominated as president. (Marvelous Claire Kaplan informed me that the real reason I was chosen president of SOHO was because Miles had dark hair and a mustache, Nicholas had dark hair and a mustache, and it was decided that the third president must also have dark hair and a mustache!)

With my bubble almost broken I decided to tackle the tasks at hand which included: raising money to repay the San Diego Board of Supervisors for its financial loan to SOHO in saving the Gilbert House; resisting the attacks from homeowners around Heritage Park who failed to see the Park's potential beauty and instead accused SOHO of causing a blighted area to befall Old Town; assisting in the convention for the National Trust of Historic Preservation; a growing list of activities.

SOHO had an outstanding collection of board members during my presidency: Bill Cartwright, Thelma White, Sally Johns, Larry Ford, Keith Evans, Harry Evans, Pat Tease, Don Mitchell, Donna Regan and Lynn Kaplan. Lynn, as treasurer, was energetic and enthusiastic and kept us all rallying behind the many activities we were pursuing.

A very difficult decision confronted my board. We had all grown to know and love the Gilbert House--Miles had practically given his life for this house--and we all cheered the day it moved through the streets of San Diego and held our breath as it triumphantly rolled down Juan Street. Now a decision had to be made as to whether we could afford the restoration of



Santa Fe Depot

Matt Potter

the house. Was SOHO, in fact, an organization for restoration, or was it the catalyst that led to preservation and then moved on to save other endangered species (our historic houses)? We decided that SOHO would perform the latter function and gave the Gilbert House to the Parks and Recreation, feeling they would do with our house all of the things we had hoped to do.

With that task behind us we heard rumors that the Santa Fe Depot was destined for destruction. I attended meetings with the city council, meetings with Amtrak, and meetings with the Historic Sites Board. Bill Cartwright, Harry Evans, Nicholas Fintzelberg, Carol Lindemulder, Lynn Kaplan and Terri Recht, to name a few, flew into action--starting the greatest telegram-letter-writing campaign that SOHO has ever seen. The Santa Fe Depot was saved for six months as it was declared an Historic Site; then more and more time was given this stately old depot. Eventually our side won, and great plans were made for the building.

Now, however, we find that the Depot is once again threatened. I took a trip this Christmas to Trolley Square in Salt Lake City, Utah. I wish that the city council of San Diego would make this

visit. I feel they would again decide in favor of the Santa Fe Depot's restoration, gaining insight and inspiration in designing and facilitating their plans. SOHO must again show the people of San Diego how important it is to maintain this relic of the past and put it to use for the present and future.

Many good times were in store for the members of SOHO. I enjoy reflecting on the train trips to Los Angeles and the home tours we started; the first one with the help of Alpha Xi Omega was truly memorable. I met many wonderful people through SOHO and felt a great sense of accomplishment due to the work of the organization.

I see the need for restoration and preservation of the houses and buildings that have made San Diego unique.

The outlying areas around the city also have historic significance. SOHO has led me to the Spring Valley historic society and La Mesa historic society. Now I feel so entrenched in the values explored as president of SOHO that I am running for city council in La Mesa. Hopefully we are not too late to preserve the charm and village aura that my city has to offer.

HOUSE RESTORATION CLASSES

By Doc Evans

For years SOHO has been asked to find out "how to". The answer now is: at the SOHO house restoration classes.

I have seen many good houses damaged or even destroyed by well-meaning folks. I have seen educated people, such as teachers, doctors, attorneys and realtors, misled and swindled by incompetent, uninformed, rapacious "contractors". This class should save even the average tract home owner thousands of dollars. If I knew ten years ago what I know now-- if I could have taken this class--I could have saved a hundred thousand dollars and a couple of long-gone houses.

The class will last twenty weeks and will cover house-lot evaluation, buying, researching, restoration, decoration and landscaping. It is for the person who wants to hire out the work and be able to know what quality of work he is getting for his money. For the perfectionist who wants to do all his own work, this restoration class will save money, time and mistakes.

As class organizer, I have been a long-time SOHO director and professional "restorationist", having worked on scores of San Diego's historic buildings. Aided by leading local experts, limiting class size to 25 and skipping minor topics of faucet repair--fuse changing, I will attempt to produce the best prepared restorationists Victoriana has faced. As plumber and electrician, I will emphasize, for example, how to determine the need for new water, sewer, or electrical service and the installation of these services. The enthused student who rushes home and puts in a new outlet, sink, toilet or faucet has covered the class cost.

Classes start Tuesday evening, February 7th. They will be held from 6:30 PM to 9:30 PM at the SOHO office at 546 Market Street. Cost is \$40 per person. SOHO members go to the head of the first-come, first-served line. Further information or a class synopsis can be obtained from Doc at 239-6876.



Doc Evans
P.O. Box 1354
San Diego, CA 92112

Enclosed is \$ _____ for _____
reservations to the SOHO house resto-
ration class. I am especially interested
in _____
and own/am considering buildings circa
_____. I am/am not a SOHO member,
and I could come _____
(Monday or Thursday nights, Tuesday
afternoons) if the first class is sold out.

Name _____
Address _____
Phone _____

Name _____

Address _____

Phone _____

VOLUNTEER QUESTIONNAIRE

Your time and talents are needed for our numerous volunteer projects. Although not all are glamorous and exciting, all are challenging and rewarding. Please indicate by a check mark those classifications in which you feel qualified as a volunteer.

_____ SOHO OFFICE STAFF

Indicate the days and hours you are available.

_____ LEGISLATIVE OBSERVER

Able to monitor City Council and Board of Supervisor meetings on preservation and issues vital to SOHO interests. Public speaking not required. Available during daytime hours.

_____ TOUR GUIDE

Learn details of tours, homes and buildings. Briefing sessions prior to tours will be mandatory.

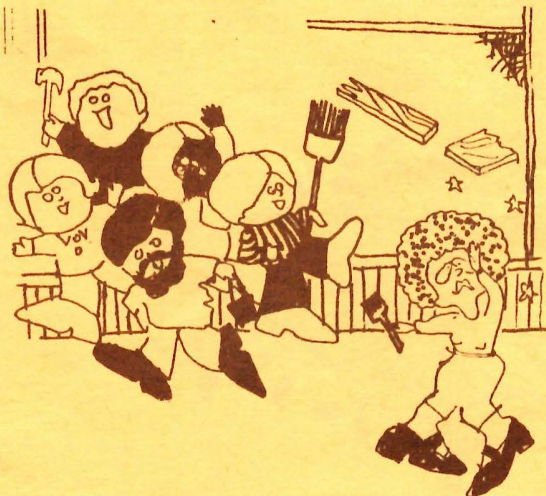
_____ HOSTESS

Will be assigned to specific houses or facilities on tours or at social events. Must learn pertinent information regarding the assigned location. May be asked to wear Victorian dress at times. Briefings will be mandatory.

_____ CLERICAL ASSISTANT

Available for special assignments such as assisting with mailings, tour reservations or other general clerical duties. No experience required. Typing helpful.

(continued)



- _____ CATERER Experienced in purchasing and preparation of food and beverages for large groups.
- _____ BARTENDER Professional experience preferred, or those who have prepared mixed drinks for large groups and worked under pressure situations.
- _____ MAINTENANCE Skilled in routine maintenance, such as plumbing, woodwork, furniture repair, etc., as required for the SOHC office or other projects. May be asked to assist other members with restoration of buildings or houses.
- _____ INSTRUCTOR Willing to conduct classes or training seminars for members interested in selecting an older house. Will advise in such areas as researching the background of the house, how to proceed with restoration and how to handle basic maintenance.
- _____ ARTIST OR WRITER Produce art work or articles for the newsletter.
- _____ SLIDE LECTURER Slides and training will be provided by SOHC. Helpful, but not necessary to have your own projector and screen. Available either days or evenings.

Please sign and return:

Name _____

Telephone (days) _____ (evenings) _____

Mail to: VOLUNTEER COORDINATOR
 SOHO
 BOX 3571
 SAN DIEGO, CA 92103



Dear SOHO Readers:

SOHO's Reflections is growing in interest and information as more members contribute their knowledge and talents to its publication. If you come across a neighborhood restoration project, relevant news item or recent publication regarding historic preservation, please let me know so that we may pass this information on to other SOHO readers.

Items to be included in a specific issue of Reflections must be turned in by the 15th of the preceding month.

Cathy Grigsby, Editor

S. O. H. O.
MEMBERSHIP APPLICATION

New _____ Renewal _____ Date _____

NAME _____

ADDRESS _____

CITY _____ ZIP _____

TELEPHONE (home) _____

(business) _____

REFERRED BY _____

ADD MY NAME TO YOUR VOLUNTEER

LIST _____ I PREFER THE FOLLOWING

TYPES OF ACTIVITIES _____

Save Our Heritage Organisation

Box 3571

San Diego, California 92103

Membership categories:

— Founder	\$5,000
— Benefactor <i>None</i>	\$1,000
— Corporate <i>50.</i>	\$ 500
— Patron <i>100.</i>	\$ 100
— Donor	\$ 50
— Organization \longleftrightarrow	\$ 25
— Sustaining \longleftrightarrow	\$ 25
— Contributing \rightarrow	\$ <i>2520</i> <i>Dues + Prof</i>
— Family	\$ 12 ✓
— Single	\$ 8 ✓
— Donation Only	\$ _____

Your mailing label indicates the month and year in which you first became a member of SOHO. Your dues will be payable each year during the month shown on your label.

If a renewal is delinquent for more than three months your name will automatically be deleted from the mailing list.

If your newsletter is returned to us for lack of a forwarding address your name will also be deleted.



SOHO

BOARD OF DIRECTORS

Marc Tarasuck
President
Pat Schaelchlin
Exec. Vice-President
Pat Minnic
Vice-President for Education
Matt Potter
Vice-President for Governmental
Affairs
Cia Barron
Treasurer
Donna Regan
Secretary

Rae Berry, Membership Secretary
Keith Evans, Restoration consultant
Nicholas Fintzelberg, Ph. D.
Ted Foley
Cathy Grigsby, Newsletter editor
Mike Jones, Horton Plaza Committee
Bruce Kamerling
Claire Kaplan, Hospitality
Dick Reed, Urban Preservation
Consultant

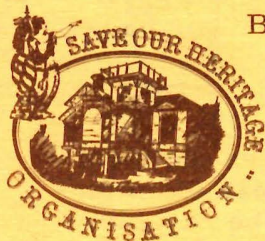
Alternates:

Joan Easley, Historical Site Board
Joe Jones, Media
Mary Ward, Historian

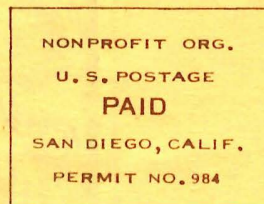
Tony Ciani, La Jolla Sub-Committee
Ray Cadena, Real Estate Consultant

NEW MEMBERS

Beverly Rothwell
Linda A. Parker
Janis Lemaster
Patricia Rutledge
Esao & Glenda Sumida
Alice M. Tana
Manuel & Martha Frank, Jr.
Roger Fredericksen
Julia S. Ketler
Virginia V. Woodruff
Barry J. Bunker
Beverly Schroeder
Tommy & Bev Hotz
Ruthe Basso
Joanne M. Jackwin
Janice Girocco
Pauline Turner
Bonnie R. Rundle
Maureen S. Sturtevant
Kathryn Johnson
Christine Frahm
Mr. and Mrs. Scott MacLeod
James Koontz
Mary Merritt
Joyce Carol Lang
Frank and Betty Perkins



Box 3571. San Diego, 92103
232-1997.



11/71
Mifflin Ward Family
4118 Lark St.
San Diego, CA 92103

return postage guaranteed