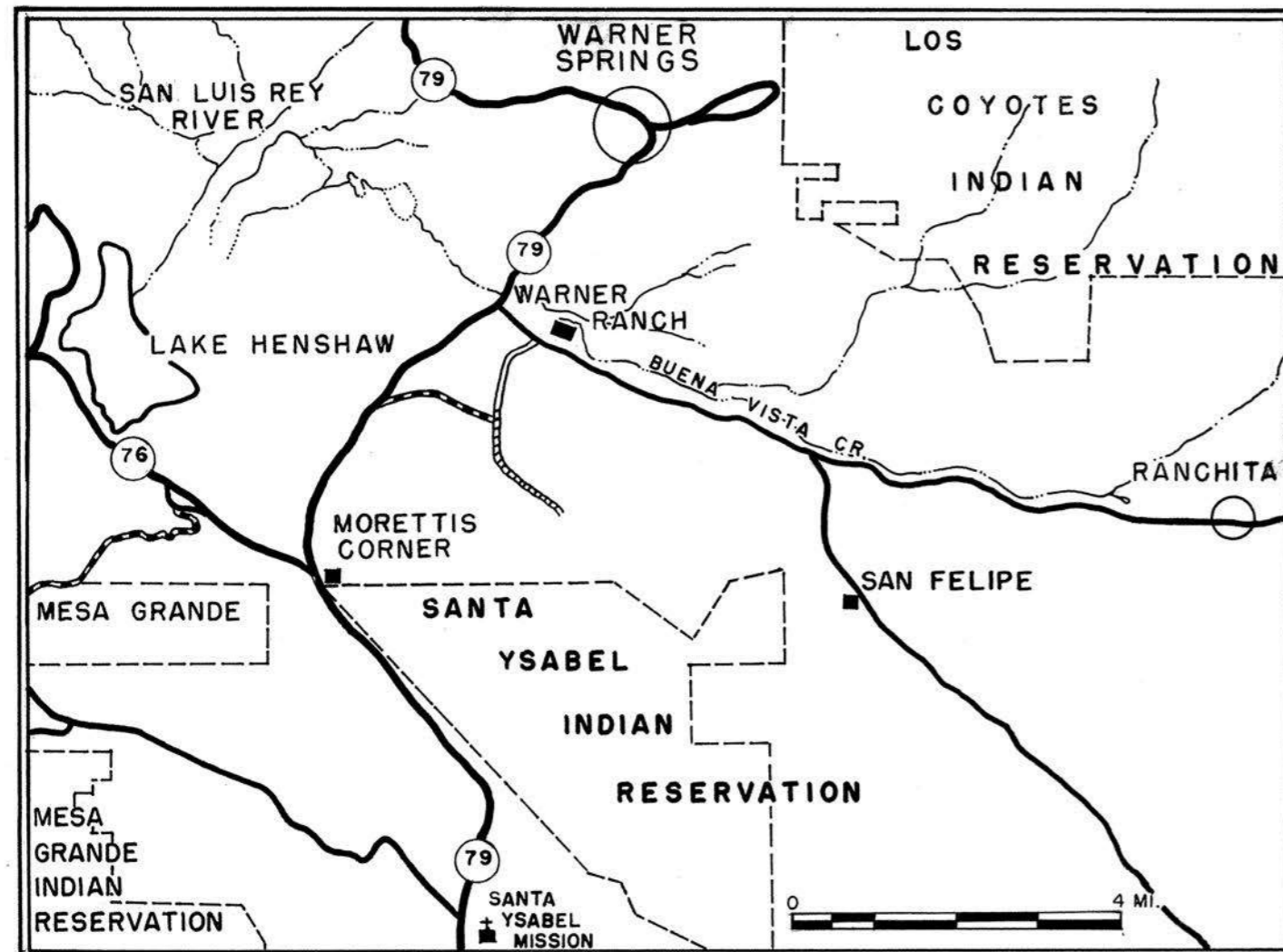
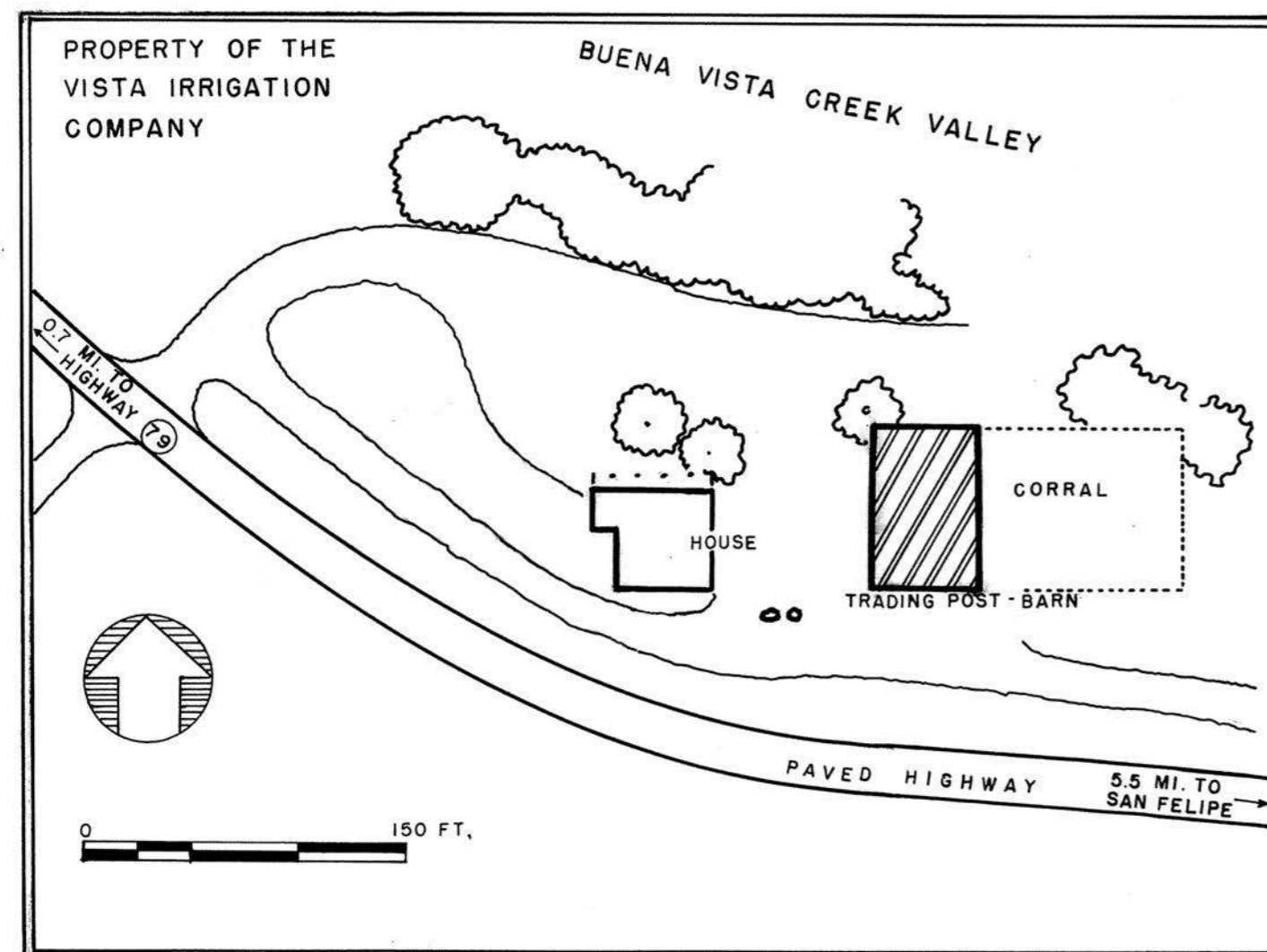


BARN-TRADING POST

WARNER RANCH, SAN DIEGO COUNTY, CALIF.



LOCATION MAP



SITE PLAN

JONATHAN TRUMBULL WARNER VISITED THIS VALLEY IN 1831, AND ACQUIRED THE RANCH IN 1844. EARLY PORTIONS OF THE RANCH HOUSE AND BARN (PROBABLY LATER USED FOR THE TRADING POST) WERE BUILT ABOUT 1845. IT BECAME A WELL-SUPPLIED TRADING POST FOR IMMIGRANTS AFTER THEIR LONG TREK ACROSS THE SOUTHWESTERN DESERTS.

DURING AN INDIAN RAID IN 1851, THE BUILDINGS WERE BURNED. WARNER MOVED TO LOS ANGELES, AND THE STRUCTURES REMAINED IN RUINS. BUT IN 1858 THEY WERE REBUILT TO BE USED AS A WAY STATION FOR BUTTERFIELD'S OVERLAND MAIL COMPANY.

RECORDED BY THE UNITED STATES
NATIONAL PARK SERVICE

THIS PROJECT WAS FINANCED FROM FUNDS OF THE MISSION 66 PROGRAM OF THE NATIONAL PARK SERVICE UNDER THE DIRECTION OF CHARLES S. POPE, SUPERVISING ARCHITECT, HISTORICAL STRUCTURES.

MEASURED 1962 BY A. LEWIS KOUE. DRAWN 1965 UNDER THE SUPERVISION OF MELVIN M. ROTSCHE, ARCHITECT, TEXAS A & M UNIVERSITY, BY STUDENT ASSISTANT ARCHITECTS, ROBERT J. FONG OF THE UNIVERSITY OF IDAHO, JAMES L. PITTS OF THE UNIVERSITY OF WASHINGTON, AND HOWARD SPECTOR OF THE UNIVERSITY OF COLORADO.

DRAWN BY: HOWARD SPECTOR

WESTERN OFFICE
NATIONAL PARK SERVICE
UNDER DIRECTION OF THE NATIONAL PARK SERVICE,
UNITED STATES DEPARTMENT OF THE INTERIOR

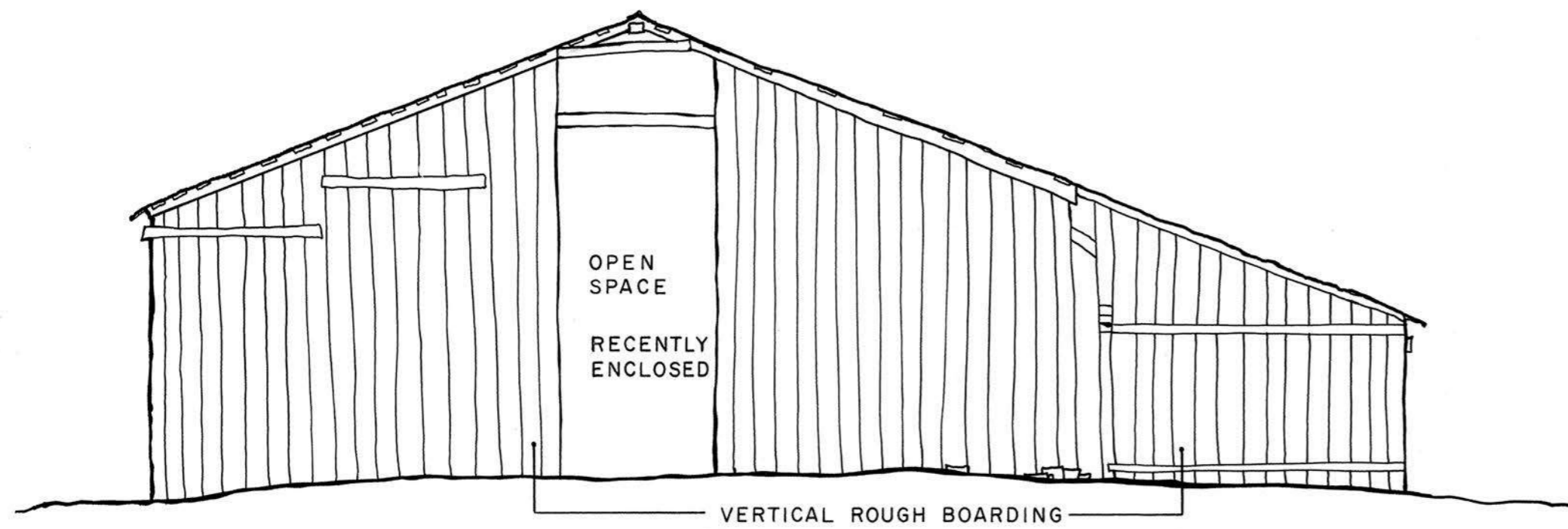
NAME AND LOCATION OF STRUCTURE

BARN-TRADING POST
WARNER RANCH SAN DIEGO COUNTY CALIFORNIA

SURVEY NO.
CAL
425

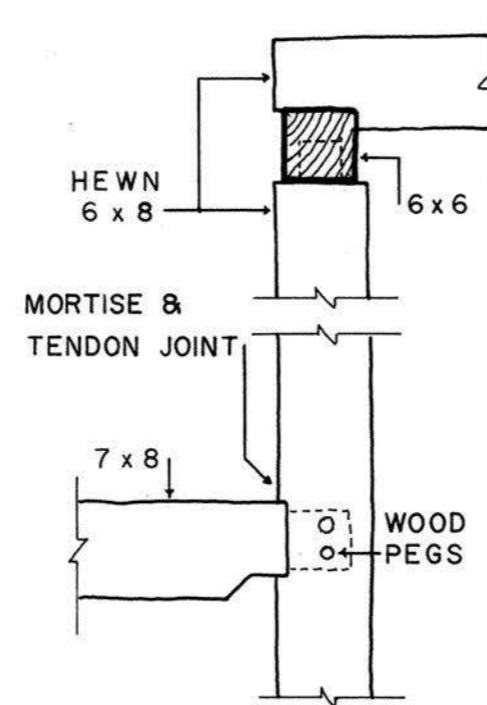
HISTORIC AMERICAN
BUILDINGS SURVEY
SHEET 1 OF 3 SHEETS

LIBRARY OF CONGRESS
INDEX NUMBER



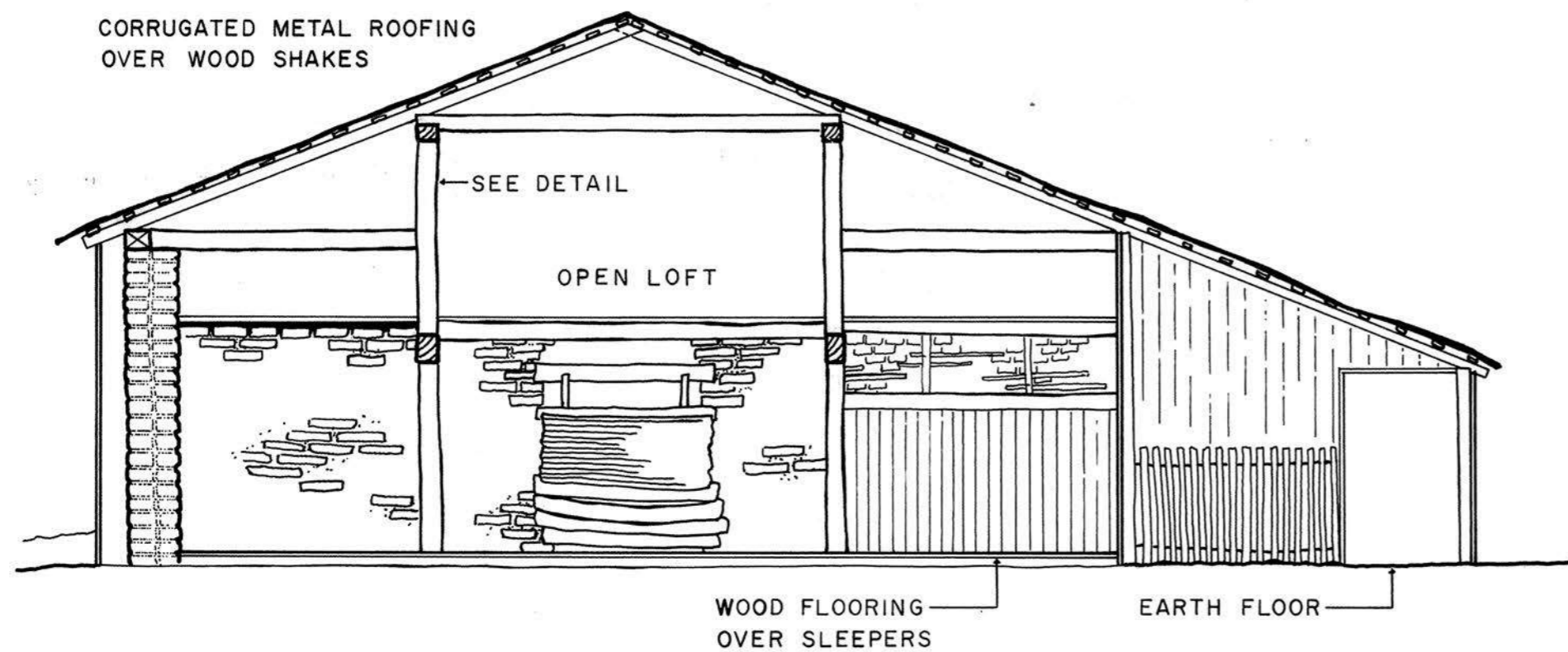
SOUTH ELEVATION

SCALE B



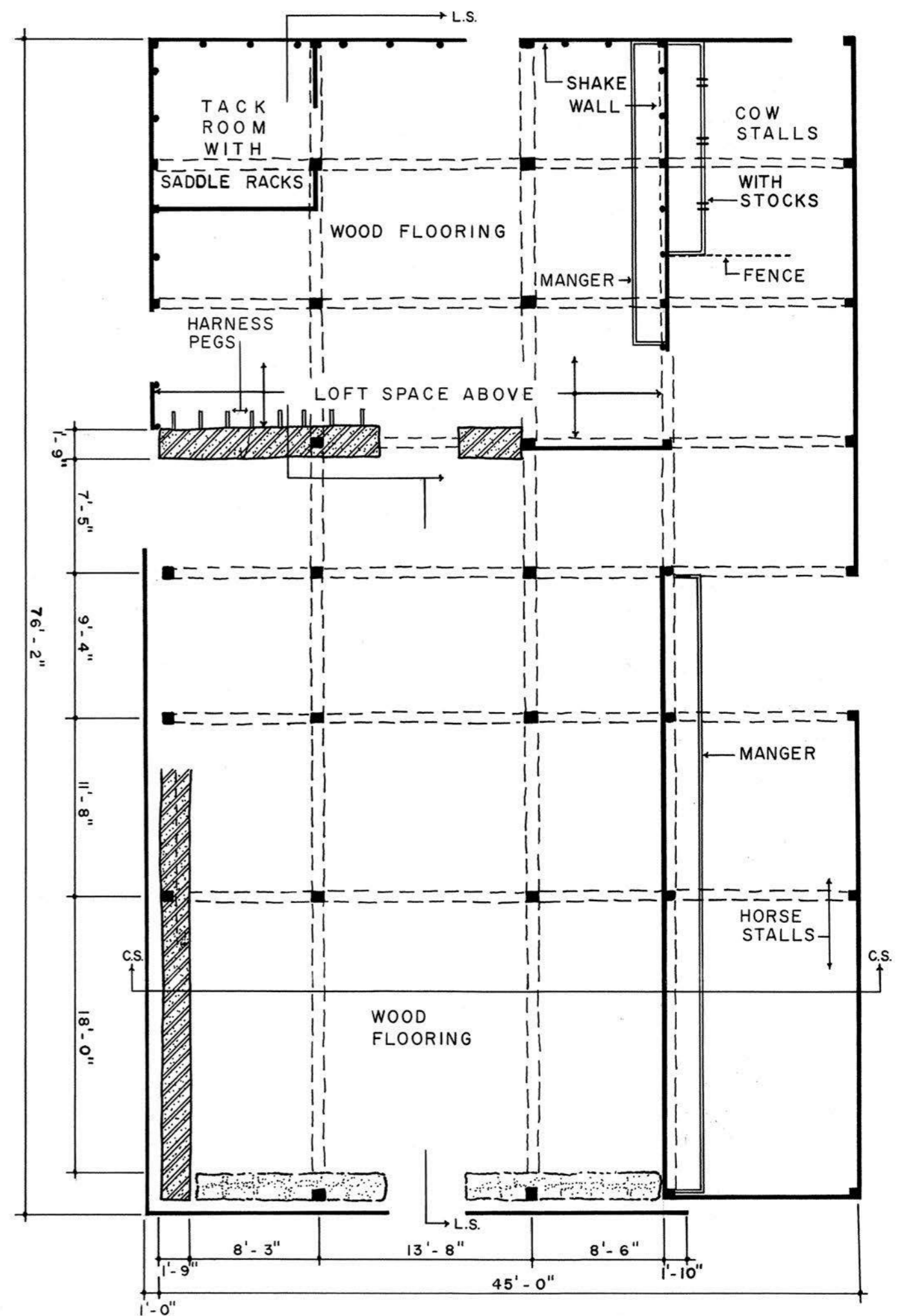
DETAIL OF TIMBER FRAMING JOINTS

SCALE A



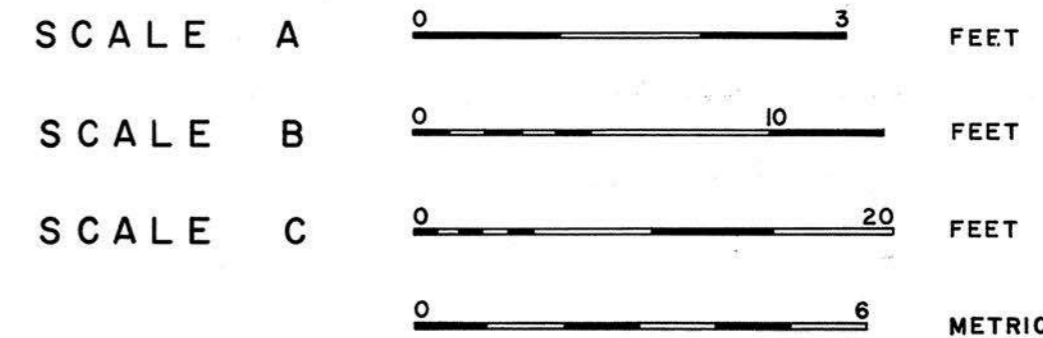
CROSS SECTION

SCALE B



PLAN

SCALE C



SCALE A

0 3 FEET

SCALE B

0 10 FEET

SCALE C

0 20 FEET

0 6 METRIC

DRAWN BY: BOB FONG, JAMES PITTS

WESTERN OFFICE
NATIONAL PARK SERVICE
UNDER DIRECTION OF THE NATIONAL PARK SERVICE,
UNITED STATES DEPARTMENT OF THE INTERIOR

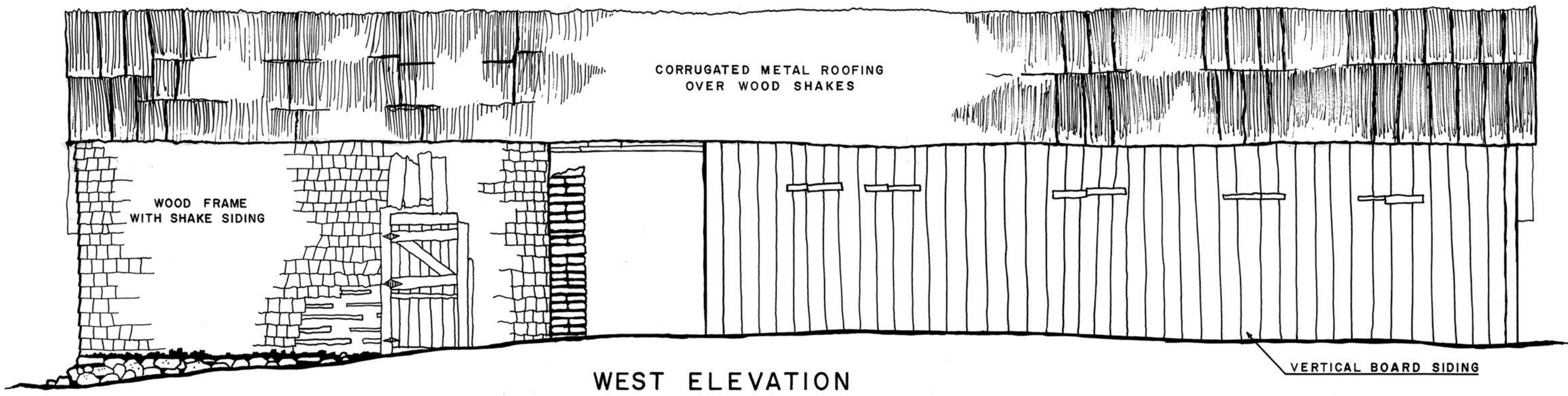
NAME AND LOCATION OF STRUCTURE

BARN - TRADING POST
WARNER RANCH SAN DIEGO COUNTY CALIFORNIA

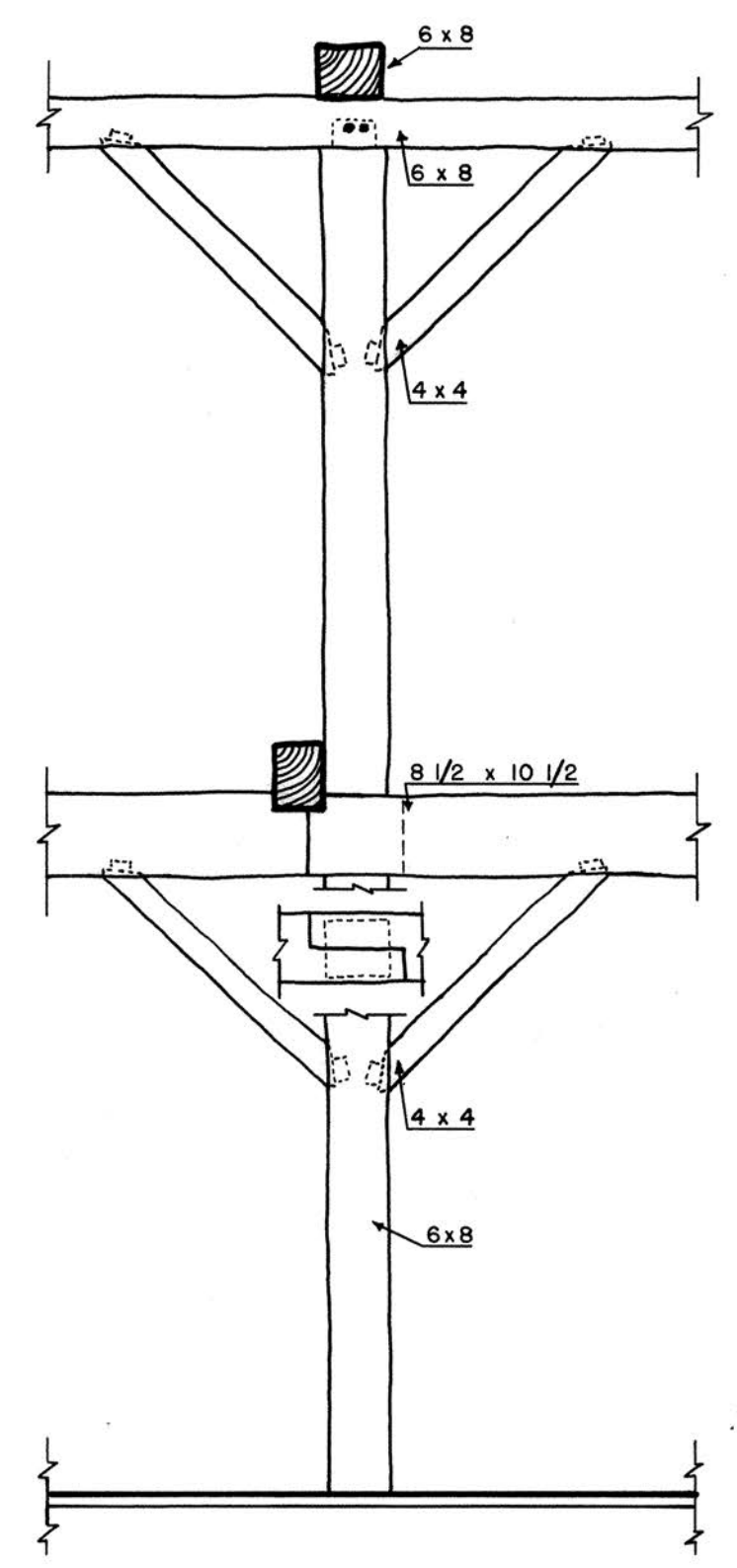
SURVEY NO.
CAL
425

HISTORIC AMERICAN
BUILDINGS SURVEY
SHEET 2 OF 3 SHEETS

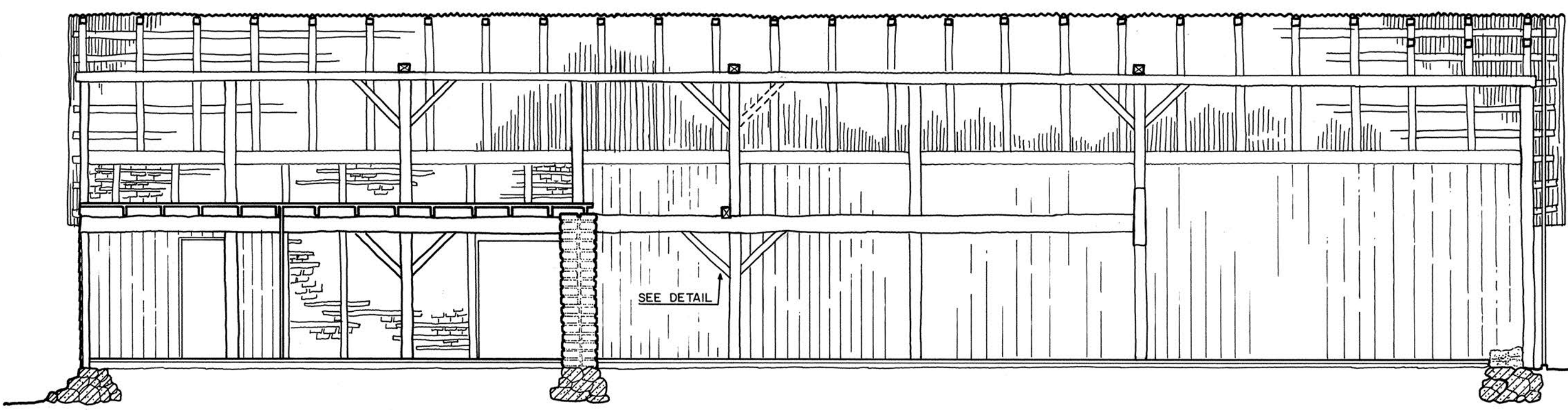
LIBRARY OF CONGRESS
INDEX NUMBER



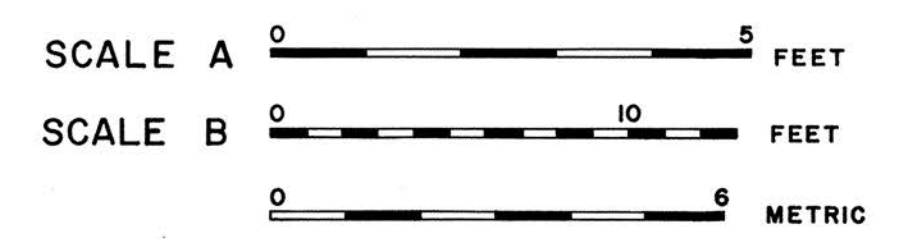
WEST ELEVATION
SCALE B



DETAIL
TIMBER FRAMING
SCALE A



LONGITUDINAL SECTION LOOKING EAST
SCALE B



DRAWN BY: BOB FONG, JAMES PITTS

WESTERN OFFICE
NATIONAL PARK SERVICE
UNDER DIRECTION OF THE NATIONAL PARK SERVICE,
UNITED STATES DEPARTMENT OF THE INTERIOR

NAME AND LOCATION OF STRUCTURE
BARN - TRADING POST
WARNER RANCH SAN DIEGO COUNTY CALIFORNIA

SURVEY NO.
CAL
425

HISTORIC AMERICAN
BUILDINGS SURVEY
SHEET 3 OF 3 SHEETS

LIBRARY OF CONGRESS
INDEX NUMBER