

CONTINUATION SHEET

Property Name: South Park Historic District Figures

Page 1 of 25

*Recorded by: City of San Diego Planning Department

*Date October 2017

Continuation Update



Figure 1. Panoramic view of San Diego from Golden Hill, circa 1890

Source: San Diego Historical Society.

CONTINUATION SHEET

Property Name: South Park Historic District Figures

Page 2 of 25

*Recorded by: City of San Diego Planning Department

*Date October 2017

Continuation Update



Figure 2. Ephraim Morse. (San Diego History Center)

CONTINUATION SHEET

Property Name: South Park Historic District Figures
 Page 3 of 25

*Recorded by: City of San Diego Planning Department

*Date October 2017

Continuation Update

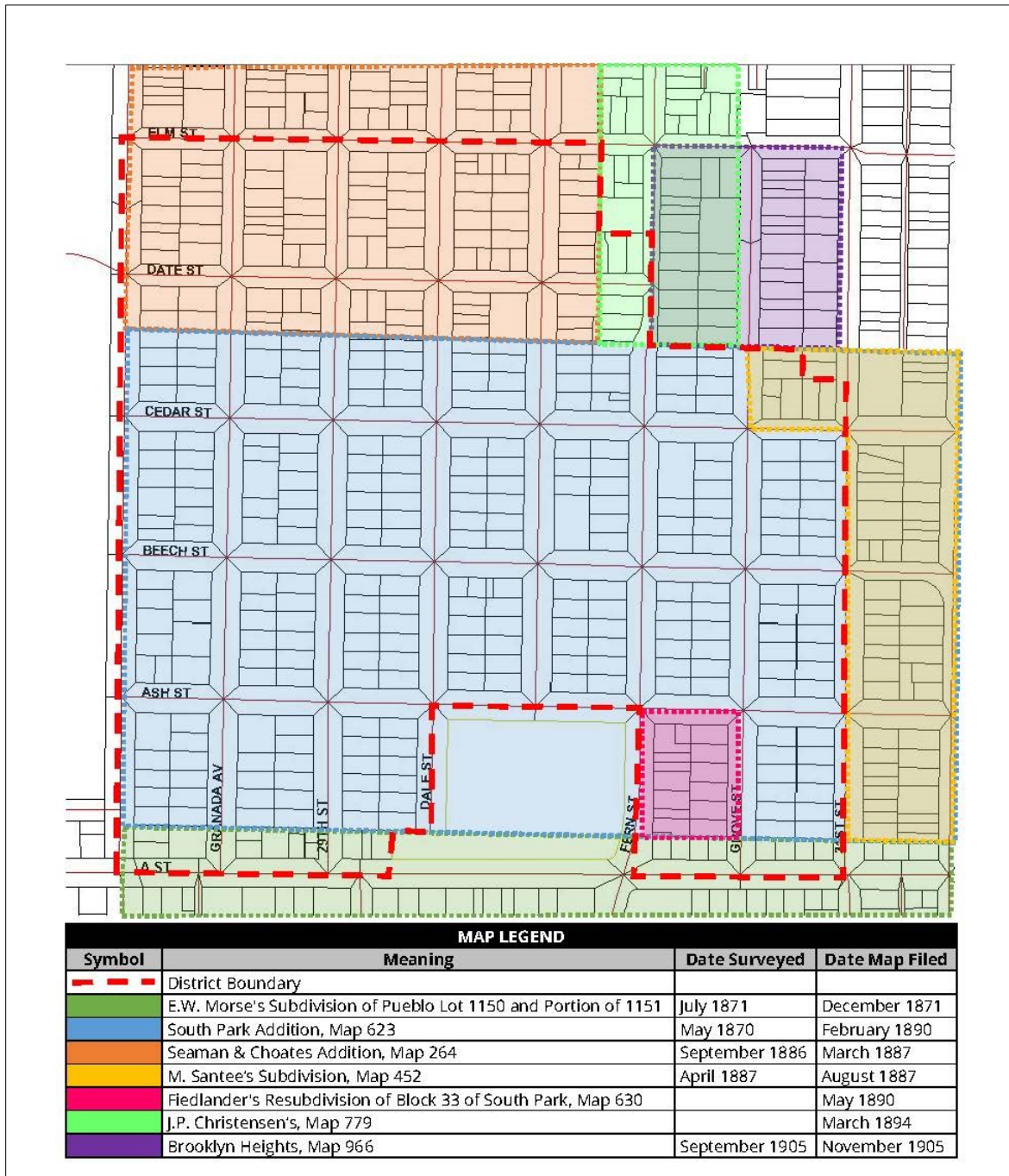


Figure 3. Relationship of Original Subdivisions to South Park Historic District Boundary

CONTINUATION SHEET

Property Name: South Park Historic District Figures

Page 4 of 25

*Recorded by: City of San Diego Planning Department

*Date October 2017

Continuation Update

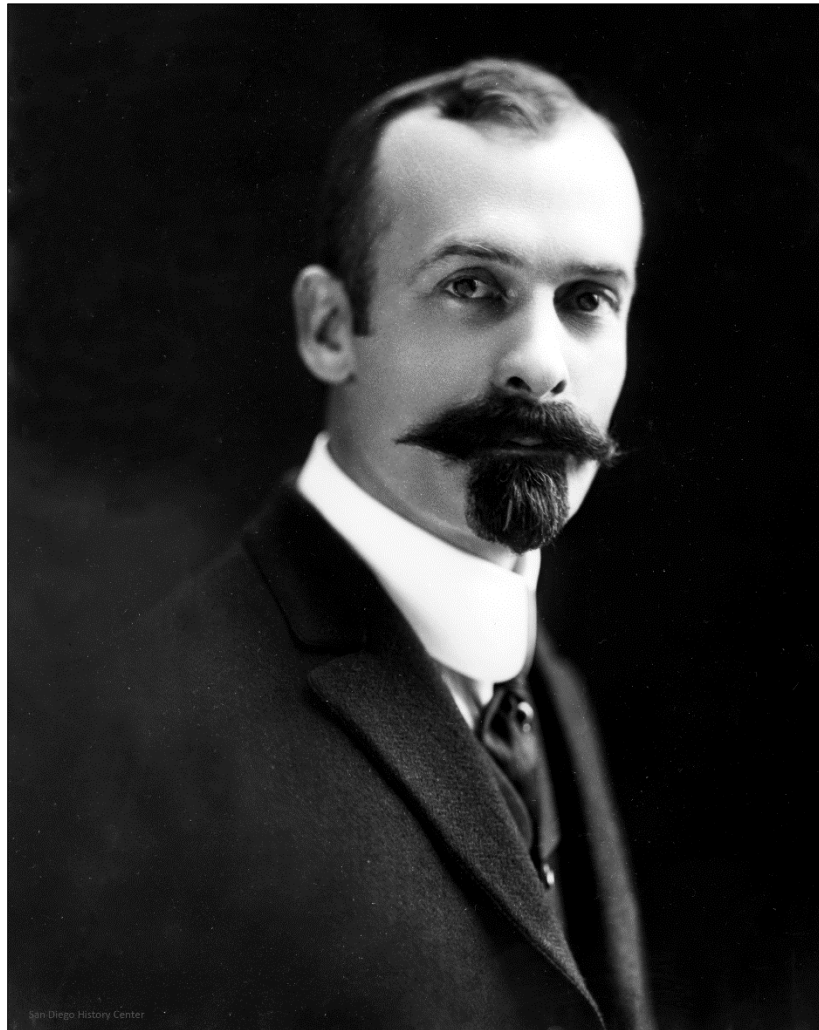


Figure 4. E. Bartlett Webster, no date. (San Diego History Center)

CONTINUATION SHEET

Property Name: South Park Historic District Figures
 Page 5 of 25

*Recorded by: City of San Diego Planning Department

*Date October 2017

Continuation Update

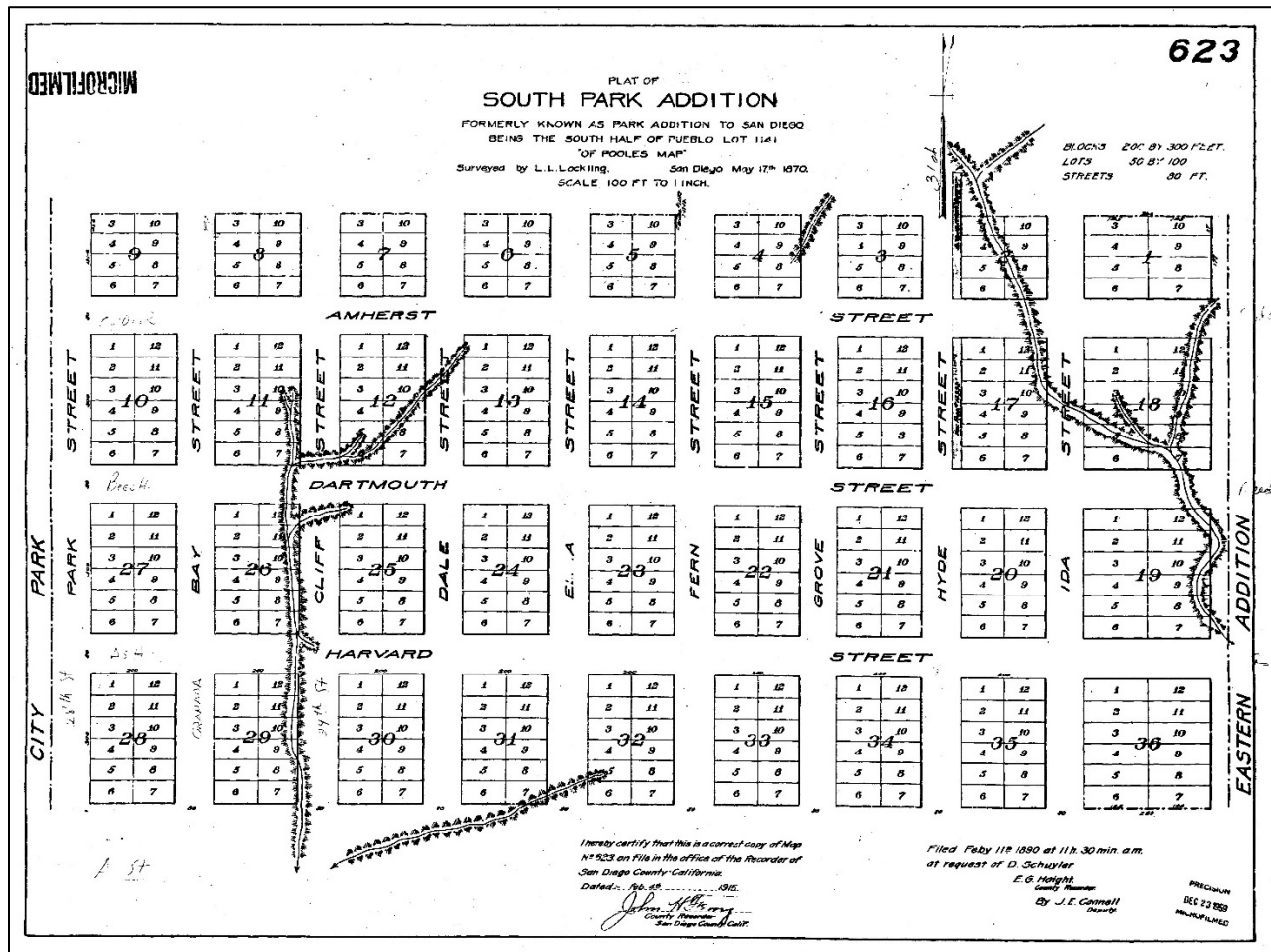


Figure 5. Subdivision Map for the South Park Addition, Map 623.

CONTINUATION SHEET

Property Name: South Park Historic District Figures
Page 6 of 25

*Recorded by: City of San Diego Planning Department

*Date October 2017

Continuation Update



Figure 6. San Diego Union Ads and Articles advertising South Park and its access to the streetcar, 1906 (San Diego Union)

CONTINUATION SHEET

Property Name: South Park Historic District Figures

Page 7 of 25

*Recorded by: City of San Diego Planning Department

*Date October 2017

Continuation Update



Figure 7. Looking north on 28th Street from A Street, 1909. (San Diego History Center)

Note the stone columns and street lights marking the southwest entrance to South Park, and the streetcar running along 28th Street.

CONTINUATION SHEET

Property Name: South Park Historic District Figures

Page 8 of 25

*Recorded by: City of San Diego Planning Department

*Date October 2017

Continuation Update



Figure 8. Looking northeast from the corner of 28th Street and A Street, 1909, with the Bartlett Estate Company Branch Office in the foreground. (San Diego History Center)

Note the stone columns and street lights marking the southwest entrance to South Park.

CONTINUATION SHEET

Property Name: South Park Historic District Figures
Page 9 of 25

*Recorded by: City of San Diego Planning Department

*Date October 2017

Continuation Update



Figure 9. Bartlett Estate Company Ad for South Park (San Diego Union)

CONTINUATION SHEET

Property Name: South Park Historic District Figures

Page 10 of 25

*Recorded by: City of San Diego Planning Department

*Date October 2017

Continuation Update



**Figure 10. Looking north northwest on Granada Avenue, just north of A Street, 1906.
(San Diego History Center.)**

The five main structures that can be seen are 1344 Granada Avenue on the left hand side of the image, followed by 1406 Granada Avenue (the white building at the corner with the brick chimney on the side), then 2832 Beech Street in the middle of the image, followed by 1612 Granada Avenue (HRB Site #349), and lastly 1725 Granada Avenue in the distance on the right hand side of the image. Looking closely, you can see a blurry streetcar running along Beech Street, on the right hand side of the image about half-way down. Note that parkway palm trees are planted, but sidewalks not yet installed on the east side of Granada Avenue.

CONTINUATION SHEET

Property Name: South Park Historic District Figures

Page 11 of 25

*Recorded by: City of San Diego Planning Department

*Date October 2017

Continuation Update



**Figure 11. Looking northwest on Granada Avenue, just north of A Street, 1906.
(San Diego History Center.)**

The two main structures that can be seen are 1344 Granada Avenue on the right hand side of the image, and 1355 28th Street (HRB Site #180) behind and to the left. Looking closely, you can see a blurry streetcar running along 28th Street, on the left hand side of the image about half-way down. Note that parkway palm trees are planted, but sidewalks not yet installed on the east side of Granada Avenue.

CONTINUATION SHEET

Property Name: South Park Historic District Figures

Page 12 of 25

*Recorded by: City of San Diego Planning Department

*Date October 2017

Continuation Update



Figure 12. Some early homes in South Park, clockwise from top left: 1724 29th Street constructed 1910 (Collection of Susan Bugbee), 1522 Granada Avenue constructed 1911 (San Diego History Center), 1538 Granada Avenue constructed 1912 (San Diego History Center), 1336 Granada Avenue constructed 1912 (San Diego History Center), 1745 29th Street constructed 1913 (Collection of Susan Bugbee) and 1517 Granada Avenue constructed 1914 (San Diego History Center)

CONTINUATION SHEET

Property Name: South Park Historic District Figures

Page 13 of 25

*Recorded by: City of San Diego Planning Department

*Date October 2017

Continuation Update



Figure 13. Pacific Building Company Office at 1318 D Street, 1913 (San Diego History Center)

CONTINUATION SHEET

Property Name: South Park Historic District Figures

Page 14 of 25

*Recorded by: City of San Diego Planning Department

*Date October 2017

Continuation Update



Figure 14. Streetcar traveling on 30th Street across Switzer Canyon. (San Diego Electric Railway Association)

CONTINUATION SHEET

Property Name: South Park Historic District Figures

Page 15 of 25

*Recorded by: City of San Diego Planning Department

*Date October 2017

Continuation Update



Figure 15. Aerial Photograph looking south southeast over South Park, 1928, showing few vacant parcels (San Diego History Center)

28th Street can be seen on the right hand side of the image, Date Street can be seen at the bottom of the image, Grove and 31 Streets run down the left hand side of the image, and A Street runs left to right approximately ¼ down from the top of the image, and defines a change in block pattern between South Park Addition and EW Morse Addition to the south.

CONTINUATION SHEET

Property Name: South Park Historic District Figures

Page 16 of 25

*Recorded by: City of San Diego Planning Department

*Date October 2017

Continuation Update



Figure 16. Looking north on 28th Street from A Street, no date (San Diego History Center). Note the maturing Mexican Fan Palm trees in the parkway, the streetcar tracks in the road, and the bus running along the old streetcar route.

CONTINUATION SHEET

Property Name: South Park Historic District Figures
Page 17 of 25

*Recorded by: City of San Diego Planning Department

*Date October 2017

Continuation Update

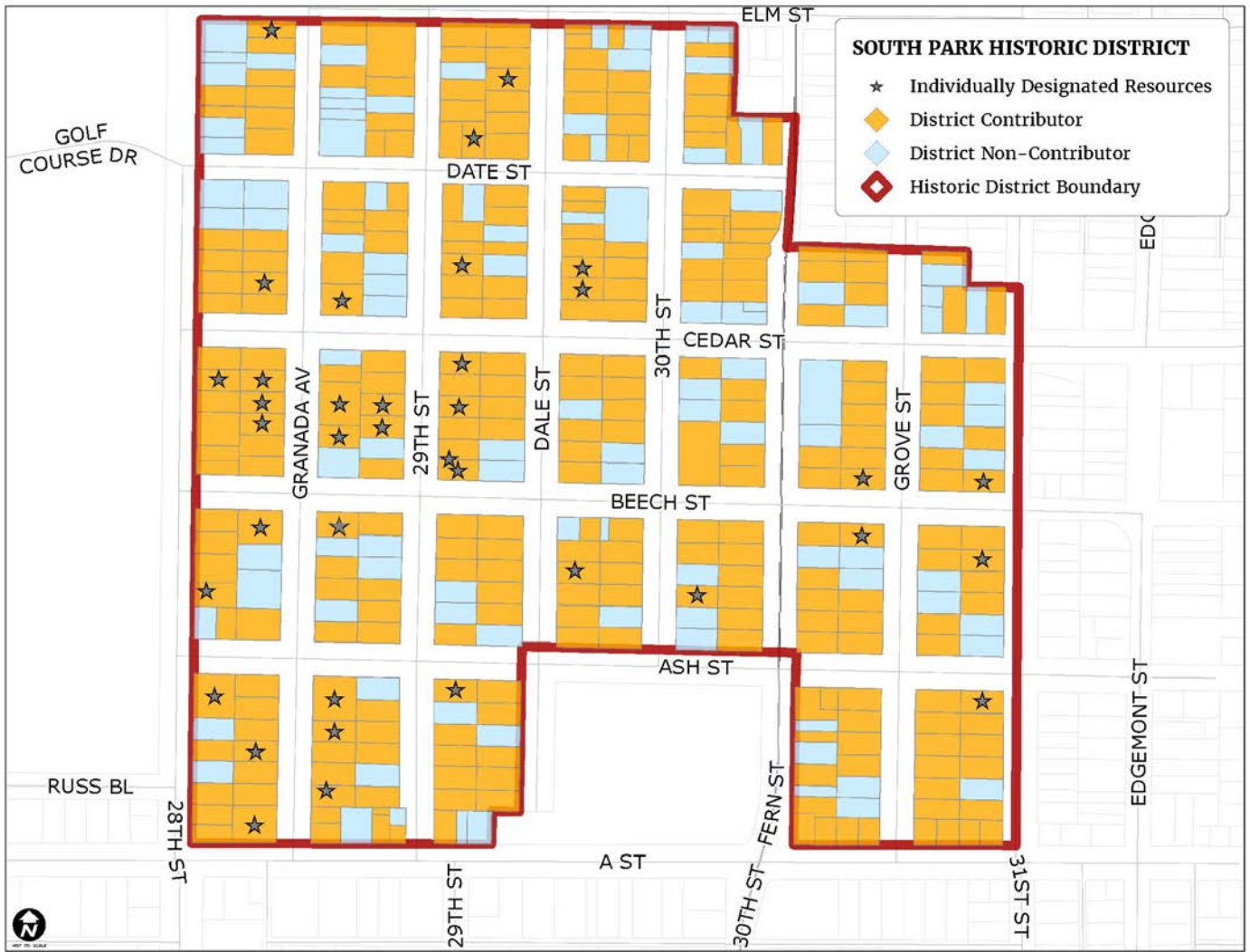


Figure 17. District Boundary for the South Park Historic District (City of San Diego 2017)

CONTINUATION SHEET

Property Name: South Park Historic District Figures

Page 18 of 25

*Recorded by: City of San Diego Planning Department

*Date October 2017

Continuation Update



Figure 18. Looking North on 28th Street, just north of A Street (City of San Diego)

CONTINUATION SHEET

Property Name: South Park Historic District Figures

Page 19 of 25

*Recorded by: City of San Diego Planning Department

*Date October 2017

Continuation Update



Figure 19. Looking North along the east side of 28th Street, north of Ash Street (City of San Diego)

CONTINUATION SHEET

Property Name: South Park Historic District Figures

Page 20 of 25

*Recorded by: City of San Diego Planning Department

*Date October 2017

Continuation Update



Figure 20. Looking northwest along the west side of Granada Avenue, north of A Street (City of San Diego)

CONTINUATION SHEET

Property Name: South Park Historic District Figures

Page 21 of 25

*Recorded by: City of San Diego Planning Department

*Date October 2017

Continuation Update



Figure 21. Looking southeast on Beech Street, just east of Dale Street (City of San Diego)

CONTINUATION SHEET

Property Name: South Park Historic District Figures

Page 22 of 25

*Recorded by: City of San Diego Planning Department

*Date October 2017

Continuation Update



Figure 22. Looking east on Beech Street, just west of 30th Street (City of San Diego)

CONTINUATION SHEET

Property Name: South Park Historic District Figures

Page 23 of 25

*Recorded by: City of San Diego Planning Department

*Date October 2017

Continuation Update



Figure 23. Looking north on 30th Street, from Beech Street (City of San Diego)

CONTINUATION SHEET

Property Name: South Park Historic District Figures

Page 24 of 25

*Recorded by: City of San Diego Planning Department

*Date October 2017

Continuation Update



Figure 24. Looking south on 30th Street, from Elm Street (City of San Diego)

CONTINUATION SHEET

Property Name: South Park Historic District Figures

Page 25 of 25

*Recorded by: City of San Diego Planning Department

*Date October 2017

Continuation Update



Figure 25. Looking southwest from the corner of Grove Street and Ash Street (City of San Diego)