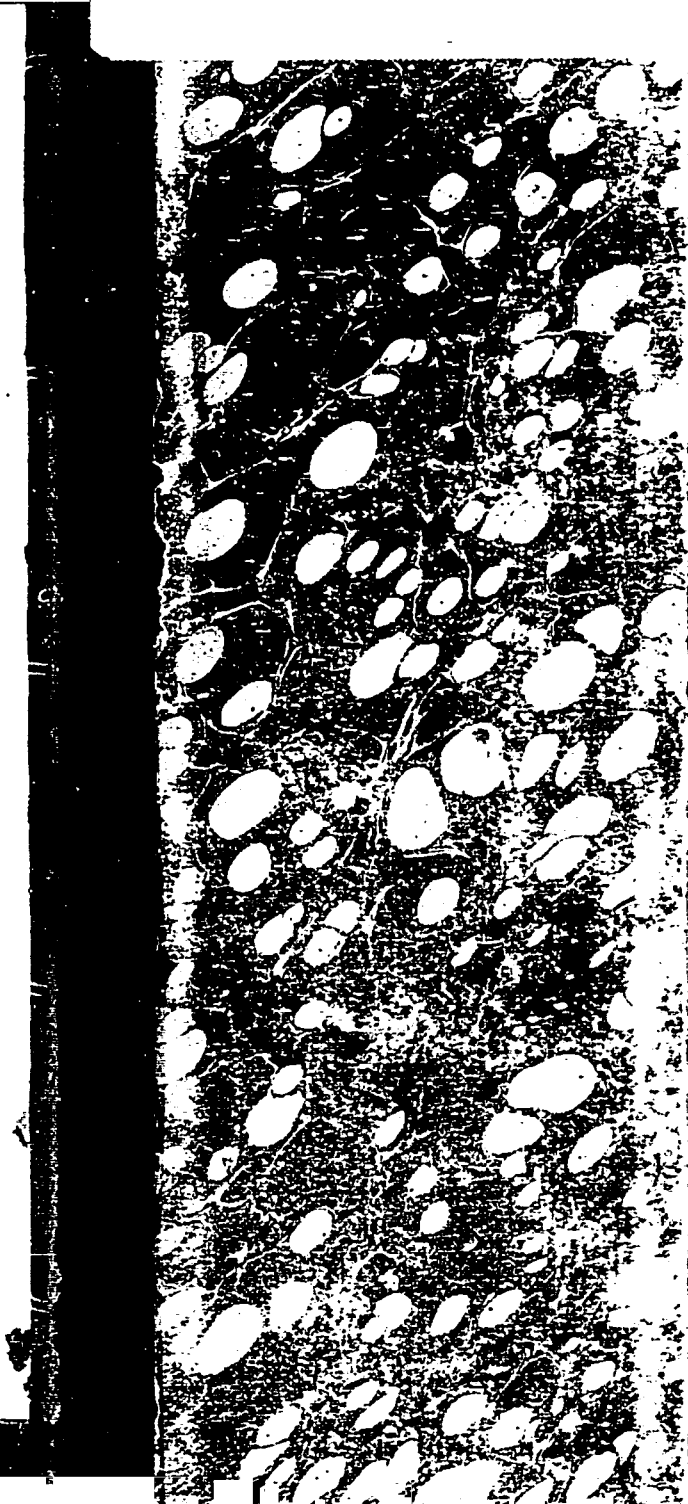


WHALEY HOUSE

INVENTORY OF COMMODITIES

WHALEY & CROSTHWAITÉ

1869-71



| | |
|-----------------------------|-----|
| Baushey | 344 |
| Cutlery | 26 |
| Cordage | 50 |
| China Glass + Miscellaneous | 54 |

| | |
|---------------------|----|
| Day Goods B. Muslin | 62 |
| Brown " | 62 |
| Some Shirts + c | 64 |
| Prints | 66 |
| Ambrays + c | 68 |
| Delaines | 70 |
| Some Shirts | 71 |
| Some Shirts + c | 72 |
| White Goods | 74 |
| Blankets | 75 |

| | |
|-------|-----|
| Drugs | 135 |
|-------|-----|

| | |
|------------------|-----|
| Sunbathing Goods | 82 |
| Tramping Goods | 78 |
| Sinking Sacks | 148 |

| | |
|-----------|-----|
| Groceries | 112 |
|-----------|-----|

| | |
|--------------|----|
| Hardware | 4 |
| Agricultural | 1 |
| Buildings | 12 |
| Butcher | 16 |
| Coopers | 18 |
| Carpenters | 20 |
| Waddlers | 29 |
| Collon Ware | 28 |

| | |
|-----------------|-----|
| Beaver Findings | 104 |
|-----------------|-----|

| | |
|--------------------|-----|
| Millinery Goods | 90 |
| Produce | 140 |
| Paints Oil and c | 108 |
| Sporting Materials | 136 |
| Stationery | 78 |
| Tobacco + c | 182 |
| Vinnyare | 34 |

| | |
|------------------|----|
| Upholstery Goods | 58 |
|------------------|----|

| | |
|----------------------|-----|
| Wines and Liquors | 126 |
| Wood and Willow Ware | 38 |

Agricultural
Hardware
Plow Points

Plows

Bakes

Steel 14 inch \$1²² ea
12 inch \$1⁰⁰ ea

Hoes

English Hoes No. 2 \$1⁵⁰ ea
Planting " No. 4 \$1⁰⁰ ea
Scrubbing " \$1³⁶ ea
Spades Long Ho \$1⁴² ea

Spades Short

Shovels Long Ho \$1⁰⁰ ea

Shovels Short Ho \$1⁰⁰ ea

2 Agricultural

Agriculture 3

Handmats
Picks
1/6⁰⁰ 2 Angles - \$1⁵⁰ ea

Pick Handles
\$3⁵⁰ ea

Brook Bags
100 lb

Wheelbarrows
\$3⁶² ea

Harrows

Crucy Combs

Grub Mattocks
\$1⁵⁰ ea

Grubbing Hoe Handles
\$3⁷⁵ ea

4 Hardware

Sand Paper

\$5.00 per Ream - 240 sheets

Emercy Paper

\$10.00 per Ream

Post Hole Borers

\$4.97 ea

Sand Irons

1/2 lb per lb

Safe Lines

50 feet \$7.50 per doz.

75 feet \$10.00 per doz.

100 feet \$12.50 per doz.

Wire

45 lb

Coffee

11

Wire

Brass

Assorted

5

Wire Iron

12 1/2 lb

Have Belly

Shen's Knives

Coffee Mills Sawrups

Store Truck

Spring Balance Scales Range

50 lbs \$13.00 per doz

Spring Balance Scales Small

25-50 lbs \$8.00 per doz

Hooks and Staples

6 Hardware

Wasp @ Staples

M.T. bin #1⁰⁰ doz.
#1¹² doz.
#1²⁵ doz.

Chunk Rocks

Door Locks

1/2" 129 - Upright Pins #2⁷⁰ doz

Door Locks Renewable

A. #5⁰⁰ doz
B. #5⁰⁰ doz

Chest Locks

#2²⁵ doz #65

Drawer Locks

#177 - #3⁷⁵ doz

Small Ramp Hooks & F

Ramp 1/2 in 62⁰⁰ doz 1/2 in 1⁰⁰ doz 1⁰⁵

Screen Hooks 1/2 in 12⁰⁰ doz 2⁰⁰ doz 2¹⁰ doz

Brass Rings @ Staples

Hardware 7

Iron Rings @ Staples

Bar Iron

Round

Flat

Square

Steel

Blacksmithy Files

Flat File Files

Rat Tail Files

3 in 1⁰⁰ doz 4 in 1⁶⁵ doz 5 in 1⁷⁵ doz 6 in 1⁸⁵ doz

Pine Locks

1/2" 2⁰⁰ doz #5 2⁰⁰ doz
1/2" 3⁰⁰ doz #11 3⁰⁰ doz

8 Hardware

Smoothing Siles Flat

Smoothing Siles Round

Smoothing Siles Square

Sam Siles

Grindstones
3/4 lb

Grindstones & Abrasives
#13 1 doz
Family 1 doz, 12 doz

Horse Shoes
1st Mr P's (Oct 2nd) #7 50
Pell's 12th per 1st
2nd

30

Hardware 9

Horse Shoes

Horse Shoe Nails

Brace
Kelleon's #03 - #16 2 doz

Bits
Centro Clarke #16 15 doz

Sledge Hammers
C.S. D. #10 4 doz

Coat and Hat Hooks
Mr P #4 2 doz

Iron Nails
M & P 2nd #2 1/2 1 doz
2 1/2 #3 2 doz
3 4th 1 doz

10 Hardware

Patent Self Closing
Gate Hinges
Small #6⁰⁰ doz

Large #12⁰⁰ doz

Cork Screws
Pocket #1¹⁵ doz

#1222 #3⁵⁰ doz

Staples
3in 2⁵⁰ per gross

2 1/2 2⁰⁰ per gross

Knives

12in #1²⁵ doz

10in #1¹² doz

Garden Knives #3⁰⁰ doz

Masons Hammer
33¢ lb

Hardware

11

Barriers Hammer
75¢ doz

Blacksmiths Hammer
#1 - 1⁵⁰ doz

#2 - 1⁵⁰ doz

Wentons
#15⁰⁰ doz

1st Builders

Nails

Mr. P. $\frac{1}{4}$ " - B. O. $\frac{1}{8}$ " Key

3d Fine $\frac{1}{8}$ " Key

Finishing $\frac{1}{16}$ " Key

Horse Shoes 42 $\frac{1}{2}$ lb

Clothes Hooks

Sacks

Brads

Shutter Fastenings

Hardware

13

Hinges - Blind

Pad Locks

Black Rivets - Nuts

Copper Rivets
500 per lb

Wrought Nails
9 lb

14 Bolts

$5/16 \times 1/2$ $\$2.15$ per 100 $\$35\%$

$7/16 \times 2$ $\$2.20$ per 100 $\$35\%$

$7/16 \times 2 1/2$ $\$3.10$ per 100 $\$35\%$

Carriage

15

Aug 12th 4 lb

$1/4 \times 1 1/2$ $1/4 \times 2$ $\$2.45$ per 100 $\$35\%$

$5/8 \times 1 1/2$ $\$3.70$ per 100 $\$35\%$

16 Butchers Hardware

Clearers
\$1.57 ea

Butchers Hardware 17

Chop Knives
\$2.50 per doz

Saws
\$2.75 ea

Knives

5 in \$3.50 Hunters
\$2.25 C. H.

6 in \$4.00 Hunters
\$2.75 C. H.

6 1/2 in 4.50 Hunters

Cook's Knives \$4.75 5 in \$6.00

10 in \$8.50 12 in \$8.50 14 in \$11.00

Steels
\$1.22 ea

Saw + Hammer - Combined
\$6.50 per doz

18 Coopers Hardware
Coop Iron

Iron Ware '19

Rat Traps Iron
\$54.00

Shovel Shares
\$42.00

Mouse Traps 6 boxes
\$22.50

Paper Traps
\$17.00

Shaming Lures
11 in \$11.00

20 Barnteris

Hardware 21

Hammers, Peck's Long Eye
No 140⁰⁰ per doz Hammers

Combs

Hammers - Common

Bevels
\$6⁰⁰ per doz

Hammers
12⁰⁰ each
Sack

Spine Bevels
\$12⁰⁰ per doz

Saws - ten 7.75

Scion Drivers
5 in \$3⁵⁰ per doz

6 in \$4⁵⁰ per doz

8 in \$5⁰⁰ per doz

Saws - rip - 7.75
\$27⁰⁰ per doz

Chis Squares
\$6⁰⁰ per doz

Brad Nails

Chisel Hammer
\$8⁰⁰ doz - Set

D.S. Buckleys

Augers

Annand Saws

Wood Saws @ 1 Buck
87² each

Hatchets Clear
Sheep 6⁰⁰ per doz
Prises 6⁵⁰ per doz

Hatchets Shingling
91⁰⁰ ea

Hatchets Lathing
91⁰⁰ ea

Hartman

23

Buckets Oiled
24⁰⁰ per doz

Iron Squares
\$6⁰⁰ per doz

Dividers
61⁰⁰ per doz

Annand Saws
12 in 13 13 - 72⁰⁰ per doz

Auger Bits -
\$3⁸⁷ 1/2 Belt

Panel Saws
\$17⁰⁰ doz

Auger
\$6²⁵ doz

Auger Handles
\$1⁰⁰ doz

24 Carpenters

Key Hole Saws

62² each

Hardware 25

2 P Hollow Ware

Skillets

Bakers
14 in 1/8 lb 27 per doz

Any Cans

#2 \$3.75 doz

#3 \$4.25 doz

#5 \$5.25 doz

Hardware Saddlery

Shoe Nails

Hardware Belts

797 30 in of 2 in all

Spurs

Rings

Buckles

Amly Harness

\$3.00 per piece

Belts

\$3.00 per doz

30 Sadley

Curry Combs

Mane Combs

Mexican Bits

California Bits

Leasing Bits
\$12.00 doz

Whips
G + B. \$27.00 doz
Buggy

Wulin Bits

Hardware

31

Bridles

Buckles - Horse

Girths

Bar Hides

Whip Sticks

Carpet Bays

Stairups
2x4 \$5.00 doz
3'2x4 \$6.00 "

34 Tinware

How Pans

Casseroles

Candlesticks

Iron Cuts

Wash Basins

Iron Plates
\$4.00 per box

Camp Kettles
Russian
\$3.25 each

Tinware

35

Iron Spoons

Britannia Spoons set
\$6.00 per gross

Britannia Spoons set
\$12.00 per gross

Galvanized Iron Buckets
Small \$14.00 doz
Large \$16.75 doz

Funnel

Wash Safes
\$7.25 each doz

Iron Buckets
\$2.75 each

36 Inward

Inward

37

38 Wood & Willow

Clothes, Baskets

Baskets Market
\$2.50 per foot

Wood Chop Chops

Butter Moulds

Butter Prints

Black Horse

Clothes Pins

Ware

39

Butter Ladles

Wooden Spoons

Matches
\$1.75 gross

Pails Painted

Pails Varnished

Bulls 2 Feet
\$4.50 per doz.

Rope Lines

40 Wood @ Millon

Ware

41

Shoe Blacking Brs

Coffee Mills
6⁵⁰ ag

Shoe Blacking Liquid

Seives -
Brass 86⁵⁰ ag
Iron 4⁵⁰ ag

Stable Buckets

Plants
Hickory 17⁴ foot
Oak 17⁴ foot
Oak 16⁷ foot

Cedar Posts 13 of 400'

Subs Painted

Keys 2 pc

Keys 1 pc

Brooms

3/6 2 4⁵⁰

3/6 3 4⁵⁰

42 Wood and Hiller

Grave

48

44 Brushes

1 Broom

No 2 4th

No 3 4th

Hair Brushes

Med

Inf

Tooth Brushes

Hair Brushes

Blacking Brushes

Dusting Brushes

Brushes 45

Painter's Brushes

Paint Brushes

Marking Brushes

Stencil Brushes

Shaving Brushes

Shed Brushes

Thick Broom
Best

Inf

46 Bunches

47

White Grass

- 1 - ~~417123~~ 4200
- 2 - ~~417123~~ 5500
- 3 - ~~417123~~ 7800
- 5 - ~~417123~~ 8000
- 6 - 11200
- 6 in with handles 6000

Sack Pool

8000 doz

48 Fishing

Bods Extension

Lines

Hooks

Tackle

49

50 Cordage

Boiler Line

Hemp Line

Chalk Lines

Bole

$\frac{5}{8}$ in 18² pencils

$\frac{1}{2}$ in Manila Rope 19²

Sewing Line

Clothes Lines

Cordage

51

This image shows a page from a ledger or account book, oriented vertically. The page is divided into a header section at the top and a main body with a grid structure. The header section is separated from the main body by a horizontal line. The main body is further divided into columns by vertical lines. The page is mostly blank, with very little text or data visible. The numbers '52' and '53' are written in the top left and top right corners, respectively, indicating the page numbers. The grid lines are faint and the page contains very little text or data.

54 China Glass (a)

Cups & Saucers Tea

Queenstown

55

Bowls Granite

Glasses - Acanto

This image shows a blank ledger page with a grid of columns and rows. The page is divided into two main sections by a vertical line down the center. The top of the page has a header area with the numbers '56' on the left and '57' on the right. The grid consists of approximately 15 columns and 25 rows. The columns are of varying widths, with the widest column in the center. The rows are of varying heights, with the tallest row at the top. The grid is formed by thin, dotted lines. There is no text or data within the grid.

58 Upholstery

Backs

- 47 87.00
- 69 100.00
- 83 125.00
- 100 135.00

Hammer - Feet

English Carpet

\$1.10 yd 2 1/2 x 12 - 14 12/14

Russels Carpet

Parlor Mats

Large Rugs 3rd 2.00
Small 2nd 2.00

Mattings

\$9.00 per Roll
\$6.00 per yd

Table Covers

75¢ yd
Perryford 5.00

Curtains

Upholstery 59

Seatings for Curlew
\$40⁰⁰ per proc.

Green Cotton
18¢ yd

Table Cover
5/4 x 5/4 5th piece

Buff Cotton
18¢ yd

Blue Holland
35¢ yd

Sinnett Mats

| | |
|----------|----------|
| 2 \$0.75 | 2 \$1.75 |
| 3 \$2.00 | 3 \$2.50 |
| 4 \$1.65 | 4 \$1.00 |

62 Day

Domestic

Brown Musling
Extd.
12²/₂

Saranac
18⁴/₂

Domestic

International
9⁴/₂

Continental
16⁴/₂

Manchester
10²/₂

Androsen 10¹/₄
52²/₂

Goods

63

Domestic

Bleached Musling
Imperial
14⁴/₂

Washing 5/4
24⁴/₂

Langdon 7/4
16⁴/₂

Wentworth 4/4

Langdon 42 inch
17²/₂

Langdon 46 inch
20²/₂

Androsen 8/4
42²/₂

Danvers 9/4

Bockham 6/4

Pelluc 9/4 Musling
52¹/₂ Green

66 Day

Domestic
Paints

Spragues

Blue 16², Green 14 & Turkey 18² 14²
Lark 14²

American

Turkey 18², 16² & green
Plain 13² & 14²

Dunnell

13² & 14² green
12² & light green

Hametta

10² & 14² green

Allan

Simpson

Buff 13 & 14² green

Manchester

14 & 14² green

Summit Green

16 & 14² green

Goods

67

Domestic
Arnolds Smig Ruby

14² & green
Plain Arnolds 11² & 14²

Amoskeag Smig Ruby

14² & 14² green

Amoskeag

13 & 14² green

Mallory

Purple 14 - green
Pink 14² green

Berkshire

10 & 14² green

Hamilton

13² & green

Memmos

14 & 14² green

Beetune

10 & 14² green

Shepard Plaid

13 & 14²

68 Dry

Domestic

Cambria

Boob. 13²/₄ yds

Washington 10²/₄ yds

Acadia 10²/₄ yds

Corset Jeans

11²/₄ Boob

Silesias

Paper Muslin

Rockport Steam Mill
Jean

14²/₄ yds

Amoskeag Jeans

13²/₄ yds

Deering Jeans

14²/₄ yds

Goods

69

Kentucky Jean
30²/₄ yds

70 Day

Goods

71

Delaines

French all wool

French Shetling Prints 1/4
21 1/2 yard. 1/2

Armure
20 1/2 Greenbuck

Swiss Drapery

Lingham
20 1/2 yard -

Spragues

Pacific

Manchester
20 1/2

72 Dry

Plaids Wool
57² 4/4

Alpacas - Block
47² 4/4

Velvet Green
47² 4/4

Velvet Block
35⁴ 4/4

French Merino
88² 4/4

Goods

73

Flannels

Red
3/4 27² 4/4 - green
30² 5/2 green

Blue
47² 4/5% Green
60² 5/2% Green
85⁴ 5/2% Green
Blue
47² 4/5% Green

516 Grey
Shaker 45² 4/4

Table Cloth Bleached
85¢ yds

Table cloth Brown
70¢ yds

Damask
\$2.50 piece
\$2.60 "

Irish Linen

50¢ - 15#

60¢ 17#

80¢ 30#

Hainsook

30¢ yds

42¢ 4 yds

Poros Muslin

Chambray
27¢ 4 yds

Cotton / Balting
\$1.00 for 100 yards
Jaernet
25¢ yds

Heavy Duck
25¢ yds
32¢ 4 yds

Blankets

9.4 Linc. 2.50
14.4 Accrual 2.50
3.00 Linc. 2.50
3.00 Linc. 2.50
7.00 Linc. 2.50
1.00 Linc. 2.50
1.00 Linc. 2.50
4.00 Linc. 2.50
3.00 Linc. 2.50
3.00 Linc. 2.50
The King 2.50
Sealed 4.00
Blank 4.00

Wool Table Cover
\$11.00 doz

Bed Spreads

10/4 White 3.75
1/4 " 4.00
1/4 Col. 3.75
1/4 " 3.75

78 Nancy Goods

Quartz

\$1.50 per lb 75% 50% 100%

\$1.25 per lb

\$1.00 per lb

Baltimore Blk

\$1.50 per lb

\$1.25 per lb

\$1.00 per lb

Spool Cotton

Clarke 50% 50%

Carter 80% 80%

Linen Thread

\$1.25 per lb

\$1.35 per lb

Sewing Silk

Needles

\$1.25 per lb

Pins

62% 70% 80%

Nancy Goods 79

Hair Pins

Edgings

Insertings

Embroidered Bands

Wool Buffing

Wool in Eyes
\$1.25 per lb

82 Contemanz

Overshirts & Vannel
Grey \$13.00 doz

Wering Under Shirts
\$6.00 doz
\$9.00 doz

Wering Drawers
\$6.00 doz
\$9.00 doz
\$13.00 doz

Socks - Men's Cotton
\$6.75 doz \$15.00 doz \$17.66 Blue & White
1002 \$1.00 doz
4018 \$4.00 doz

Socks Sool
\$7

Socks Wering
Blue \$5.00 doz
Grey \$4.00 doz

Check Shirts
\$6.50

Striped Shirts
\$6.50

Calico Shirts

83 Furnishing Goods 83

Uannels
\$6.00 doz
\$12.00 doz

Suspenders Best
Medium

Inf

Boys

Paper Collars
\$2.00 doz

Linens Collars
~~\$1.00 doz \$1.20 doz \$1.50 doz~~

Emarats
Black Silk \$14.00 doz

Heckties

Black Handkerfs

Colored Handkerfs Printed

84 Gongs

Murphy's Goods 85

German Knives & Tools

Bandanas

Umbrellas

- # 5 55⁰⁰ doz
- # 7 75⁰⁰ doz
- # 14 115⁰⁰ doz
- # 8 115⁰⁰ doz

Sea Shirts White
\$18⁰⁰ per doz.

Cotton Knives Plain
\$15⁰⁰ doz

Boys Blue Mixed Hose
\$26⁰⁰ doz.

Grey Merino Unwe Shirts
\$5⁰⁰ doz

Grey Merino Drawers
\$5⁰⁰ doz

86 Ladies

Opening - ⁱⁿ ^{the} ^{hips}

White Undersuits

Palpators

Chignons

Counterside Skirts
#3rd ^{day}

Hose

#1006 - ^{the} ^{best} ^{day}

Corsets

White #1st ^{day}

Chemise - ^{with} ^{the} ^{hips}

#141 & 750th ^{day}

141 & 825th ^{day}

#3850 & 12th ^{day} ^{day}

#10013 & 10th ^{day} ^{day}

Furnishing Goods

Drawers Cotton

Collars Linen

Cuffs Linen

Cuffs Paper
#525th ^{day}

Collars Paper
#2nd ^{day}

Cotton Hats

Parasols

Garters

Shawls
#162nd ^{day} ^{day}

75th ^{day} ^{day}

#100 ^{day} ^{day}

#11th ^{day} ^{day}

88 Ladies

89
Swimming Jumps

Skirt Braid
62² doz

Knitting Cotton
8 1/2 lb

Brown Silk Hets
43⁵⁰ doz

Black Silk Hets
83⁵⁰ doz

Zephyr
Cds #278 lb
Blk + White 82⁵⁰

Braid
Alpacas - 75⁴ doz

Childs Cotton Hose
#500 41⁴ doz
502 42⁵⁰ doz
Blue 46. rep 41⁵⁰

Balamorals
Deaton 44⁵⁰ doz
Rets 44⁵⁰ doz
Deaton 44⁵⁰ doz
Luce 44⁵⁰ doz

90 Millinery Goods

Buttons

Velvet

White Lace

Black Lace

Ladies' Hats

Artificial Flowers

Millinery Goods 91

Baroque

Red, Blue, Green

92 Yankee

Purses Buckskins

Purses Velvet

Purses Horsey

Fine Combs Ivory

Kniving Combs

Marbles

Shoe Stings

Buttons
Jet

Small Jell-

Bone

Notions

93

Buttons
Jet

Pearl

Shing

Porcelain

Hooks ^{and} Eyes Tab

Hooks ^{and} Eyes ^{Belmont}
\$2.00 to 9.12

ocket

Knives

Buckle

Breast Pins

94 Yankee

Notions

95

Hair Back Combs

Jeaneys

Quilted Slings

Perfumery

Cotton Thread
Clarke 50 & 50g

Coates 80 & 80g

Pine
63 & 60g

Linen Thread
4/85 per lb
4/85 " "



98 Stationary

Cigarette Paper
\$2.50 perream

Labels Pencils
50¢ per doz
Rubber Bands, 50¢ doz

Steel Pens
Washington Mfg \$1.25 doz
No 85 60¢ gross 50¢ doz
No 201 62¢ gross
No 203 87¢ gross
Ink
59¢ doz

Bookcase Paper

Better White "

Hot-Cream "
\$3.25 perream

Better Blue "

Regal Cap "

Hot-Cream "

Stationary 99

Labels Butter Emery
\$1.25 doz

Playing Cards ^{Ames}

Monte Cards

Envelopes Buff

Memorandum Books

Diaries 1867

Blank Books
By Berger in leather \$4.80
25¢ quire

Ready Reckoner

Miscellaneous
\$2.00 doz

Pass Books

Slates

Sponges

Red Caps

Pen Holders

Chalk
\$2.25 per doz

Slates
5x7 - \$1.25 doz
6x9 - \$1.75 doz

Copy Books
\$2.50 per doz

Grammar Duackenbf
\$14.20 doz 30%

Calculus 100 30%

Arithmetic Large
Cass's Com School \$11.20 doz 30%
" Inf 3.24 doz 30%

Robinsons Rudiments
\$1.00 each

Readers 1st
\$4.50 doz 30%

2nd \$4.20 30%

3rd \$10.20 doz 30%

4th \$1.20 doz 30%

Spellers 1st
Large Wilson \$4.20 30%
2nd Small \$3.50 30%

Geographies

First Steps
\$6.40 doz 30%

Primary
Allen \$1.65 doz
Connell \$10.20 doz 30%
Secondary

Intermediates
\$2.92 per doz 30%

Quackenbosc U. S. History
\$2⁰⁰ doz. 20% 30%

Libro Primario
\$4⁵⁰ doz. 30%

Spanish 1st Reader
\$5⁵⁰ doz. Montello

Spanish 2nd Reader
\$13⁰⁰ doz.

Spanish 3rd Reader
\$16⁵⁰ doz.

104 Leather Binding

Shoe Skins

Colored Sheepskins

\$13⁵⁰ 83

Buckskins

Sole Leathers

27⁵⁰ lb

Black Leathers

30⁵⁰ lb

Skirting

31⁵⁰ lb

Miners Belts

\$3⁵⁰ 507

Drugs

105

Alum

Resin

Barb Black

Magnetic Powder

Sal Soda

Salt Peter

Borax

65⁵⁰ lb 250 2 50

Glue

25⁵⁰ lb

Bluestone

Ayers Sarsaparilla

186 Drugs

107

Sulphur

Boston Oil

4oz 8 1/2 5oz 6oz 2 1/2 8oz 3 1/2 8oz

Agar Pills

108 Paints and

Boiled Linseed Oil
\$1.35 per gal

White Lead
14² lb

Prussian Blue

Verdigris

Window Glass

Varnish
Suntan 5 gal \$2.25 per gal

Surfacing
75¢ per gal

Coal Oil
62¢ per gal - 2.00 per 1/2

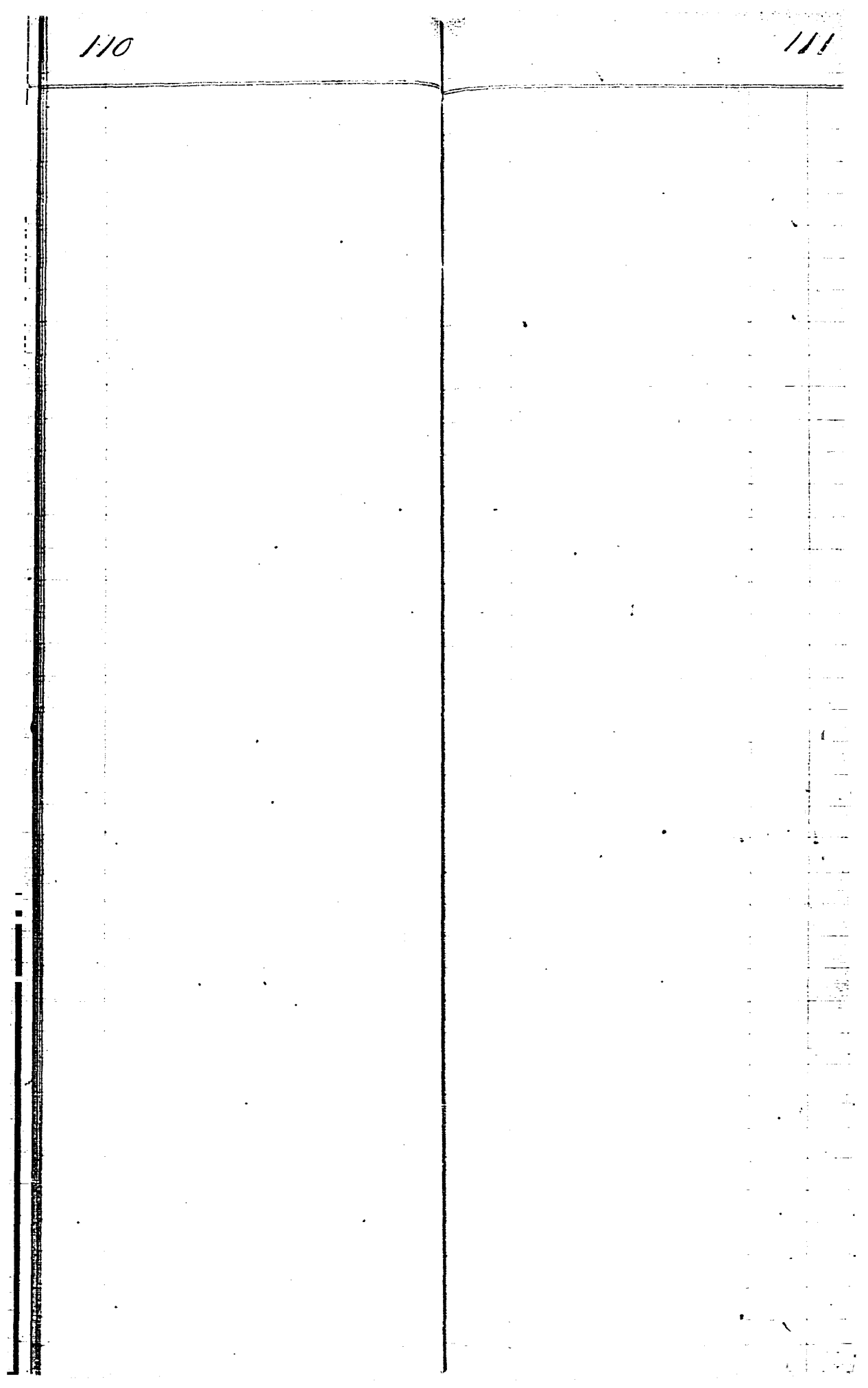
Oils

Castor Oil
\$1.90 per gal

Glass
12x16 2 1/4 12² case
18x24 5² case
20x26 5² case

Heavy Foot Oil
\$1.50 per gal

Lard Oil
\$2.00 per gal



112 Groceries

Vinegar

Salt - Small Bags
5 lbs 9c 1 Bag

Salt Table 20 Bags

Dairy San Francisco 50 lbs
1 3/4 \$ lbs

" " 20 lbs

Worcestershire Sauce L + P
Dang

Sauce \$4.50 doz

Salad Oil - Choice

Olive Oil - Pos
\$5.50 per case

Olive " " 1/2 Pos
\$6.50 per case

Cinnamon - in Glass

Allspice in Glass

Groceries 113

Cloves in Glass

Cloves Whole

Mustards

Maize

Black Pepper Whole

Black Pepper in Glass
\$1.50 per doz

Cayenne in Glass

Mustard S
French \$2.50 doz

Dec Sugar 1 lb
75¢ lbs

75¢ lbs

60¢ lbs 1/2 lbs

Ching Corn

Ching Bean

Amel Green

\$1.25 lbs

Ching Rice

6 1/4 \$ lbs

114 Groceries

Coffee

Benard's

30¢ lb

1 lb Paper

Benard's

30¢ lb

1 lb Paper

Government

1 lb Paper

Roasted Long

Green

Rip

19¢ lb

Chocolate Sage - Mendell's

30¢ lb

Sugar

S. I. Brown - Light

13¢ lb

Crushed

o

15 3/4 lb

Pulverized

Granulated

King

12¢ lb

Groceries

115

Sugar

Roaf

Golden Refine 5 Gal

80¢ Gal

Molasses in Btl

Golden Refine in Btl

BO Soap - 149 Bars

7¢ lb

BO

Small

7¢ lb

Family Book

7¢ lb

Salt Water

7¢ lb Spanish

Castile

16¢ lb

Starch P. Green Glass

13¢ lb Paper

Dungess 11 1/2 lb

Corn Starch

Indigo Blue - Seal

116 Groceries

Candles -
Frank
18 lb

Schmidt's
17 lb

Paraffin
31 lb

Sperm

Cream Butter
45 lb

Paleratus

Sub. Carb Soda

Y. Powder - Rennell's

Pa 2 1/2

Groceries 117

Sage

Macaroni
2 2 Box

Vermicelli
2 2 Box

Dried Apples

Dried Peaches
9 lb

Prunes

Raisins

Almonds

Peanuts

118 Groceries

Stick Candy + Nut
25¢ lb

Jelly Drops
40¢ lb

Almonds - Sugar
38¢ lb

Maltos
35¢ lb

Pickles in Glass

Pickles special Mixed
\$2.25 special

Pickles Plain
\$2.50 special

Ketchup in Glass
1/4 lb

Pepper Sauce

Onions

Picallily

Groceries 119

Pongas Candies
40¢ lb

Rock Candy
38¢ lb

Rose Cordial + Bann
40¢

Chocolate Candies
40¢ lb

Jube Jube Sauce
38¢ lb

Conversation Loganges
35¢ lb

Peppermint + The Drops
25¢

120 Groceries
Canned

Oysters

2 lbs \$3²⁵ doz

1 lb \$2⁰⁰ doz

Turkey

Chicken

Tomatoes

\$3⁵⁰ doz

Peas

\$3²⁵ doz

Strawberries

Jellies

\$5⁵⁰ per doz

Lams

\$5⁵⁰ per doz

Apples

\$4⁵⁰

Concentrated Milk

\$3⁷⁵ per doz

Bobcats

Sardines

\$2²⁵ doz for 12 doz

\$3⁵⁰ " 1/2 doz

Groceries 121

122 Groceries.

Bacon
19¢ per lb

Hams
19¢ lb

Bard
19¢ lb 2¢ lb

Butter
Bull Brand Pinkin 36¢ lb

Cheese
Eastern 20¢ lb

Mackerel
14¢ per Kist

Sardines

Groceries

123

1 egg

Sardines

124 Groceries

Powder 1 Bushel

Star Brand

Soda Cracker
7 lb

Ginger Snaps
10 lb

Jennie Lind
10 lb

Groceries

125

Flour

Superfine
4 1/2 13 lb

Extra

Corn Meal
3/4 & 25 lb Packs

Shelled Hominy

Oat Meal

Penck. Barley

Cracker Wheat

126 Wines & Liquors

Oregon Champagne Cuvée

Champagne Cuvée
2⁵⁰ doz

Ale Maurice Co & Co

Portes

Claret

Port - Bristol
L.R. & 2⁵⁰ doz

Port - California
\$5⁰⁰ doz L.R.S

Sherry Bristol
2⁵⁰ doz

Maderia

127 Wines & Liquors

Whiskey

Gin - London
\$4⁵⁰ doz
Holland Gin
\$3⁵⁰ doz

Brandy
Charles Cognac \$4⁰⁰

Absinthe
\$18⁰⁰ doz

Aromatic Bitters

Stoughton's Bitters
\$2⁵⁰ doz

Hostetter's Bitters
\$9⁰⁰ doz

Schnappa
Wolfs \$11⁰⁰ doz

Angelica
\$5²⁵ doz

128 Wines and

Green Peppermint
\$2.50 doz

Curaçao
\$9.00 doz

Orange Syrup
\$4.50 doz

Romon Syrup

Raspberry Syrup

California Cocktail

Porter

Gum Syrup

Champagne
Dry - \$2.00 per Bottle

Pinot - \$2.40 per Bottle

Liquors

129

White Wine
\$3.50 doz

Jamaica Rum
\$3.75 Gall

130 Wines

and Liquors

131

132 Tobacco

(am) Pepsay #133

Leaf - for Cigarettes

Pepsay

Plug

Heavy 60 lb

Strut + Straws 80 lb

Polace 7⁵⁰ Press

Cigarettes

Andersons Polace
7⁵⁰ Press

Marzipan

Fine Cut Smoking

Clay Pipes

Red Clay Pipes

Fine Cut Smokingⁱⁿ Pepsay
Biquet 1/2 lb Pepsay - 55 lb

Diamond 1/4 lb Pepsay 70 lb

134 Tobacco

Segars (en C)

135

136

Shooting

Powder Blasts

DuPonts Powder
1 lb. 55¢ Can

Bazar's Powder
1/2^{lb} 3/4 Can

Shots
\$2.50 per pack

Revolver Balls
12.5 lb

Bar Lead

Lead Caps
\$1.25 per 100

Materials

137

Match Army Caps
\$1.00 per 100

Wadding for Guns
\$1.37 per 100

Fire Locks
\$2.50 per Box

Fuse
9/10¢ per foot

136

Shooting

Powder Blasts

DuPonts Powder
1 lb. 55¢ can

Bazards Powder
1/2 lb. 3 1/4 can

Shot
\$2.50 per pack

Revolver Balls
12 lb

Bow Head

Clay Caps
\$1.25 per M

Materials

137

Thick Army Caps
\$1.00 per M

Wadding for Guns
\$1.37 per M

Fire Brackets
\$2.50 per box

Fuse
9/10¢ per foot

138

Spooting

Materials

139

Beans
White Beans

Barrow "

Pork "

Pork "

Pork "

Onions

Grain Sacks

Wheat

142

Produce

Produce

143

144

Boots

+ Shoes

145

Mens 1/2 Welt Boots
\$125 pair

Radley Race-Cong Jumps
\$12.50 doz.

Best Sewed Cong Jumps
\$28.50 doz.

Mis Bed Cap. Palamoras
\$12.00 doz.

Pegged Cong Jumps
\$19.50 doz
\$18.00 doz

Mis. Bed Cap. Palamoras
\$15.00 doz

Mens Carpet Slippers
\$10.50 doz

Childs Horroes Shoes
\$6.00 doz.

Beated Slippers
\$9.00 doz

Radley Horroes Palam.
\$24.50 doz

148 Clothing

36° 6803 Pants \$30.00 per doz
7334 " \$30.50 "
7230 " \$31.00 "

Mole Skin Pants
\$31.00 per doz

Linen Sack Crates
\$15.00 per doz

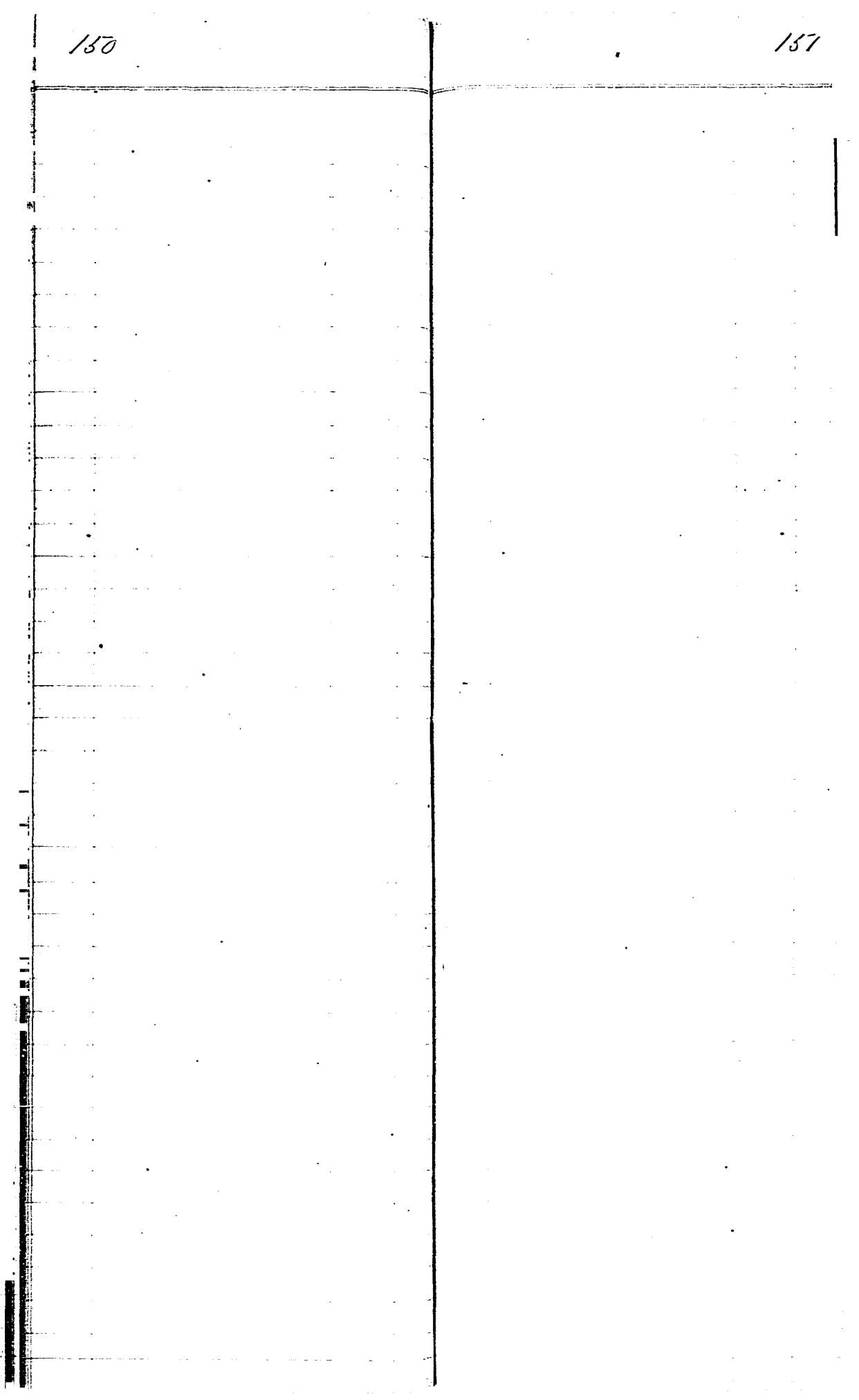
Linen Baskets
\$20.00 doz 1/2 111
22.00 " 1/2 5738

Duck Pants
\$10.00 doz

Clothing 149

Pants

84 Mosskin 11 1/2 = per dozen
85 " 70 1/2 per "
86 " 73 1/2 per "
87 " 8 1/2 = per "



154 Carpets

and Matting

155

\$8.00 per Roll

156 Hats + Caps

Fine Panama Hats
\$25⁰⁰ per doz

\$18⁰⁰ per doz

Magnet Straw Hat
\$9⁰⁰ per doz

Empire Crown
\$7⁰⁰ doz

Perley - Wagon Straws
\$5⁰⁰ doz

Palm Leaf Hat Straws
\$2²⁵ doz

White Palm Leaf
\$1⁷⁵ doz

Hats and Caps 157

Black Beaver

1/2 \$24⁰⁰ doz
3/4 \$22⁰⁰ doz
5/8 \$36⁰⁰ doz

Blue Cassimer
\$19⁰⁰ doz

#27 \$28⁰⁰ doz

#880 \$12⁰⁰ doz

#516 \$33⁰⁰ doz Panels

#2815 \$15⁰⁰ doz

#955 \$15⁰⁰ doz Black

#2534 \$17⁰⁰ doz Black

#2825 \$17⁰⁰ doz

#152 \$14⁰⁰ doz Black

#884 \$16⁰⁰ doz

160 Garden Seeds

161

Osage Orange
#162-165

252

Agricultural Hardware
P.A.