

1890

CITY TAXES

City of 1890
Thos. Whaley

1890 TAXES ARE DUE JUNE 2nd.

Delinquent November 24.

- 5 Per Cent. Reduction if paid in June.
- 3 Per Cent. Reduction if paid in July.
- 2 Per Cent. Reduction if paid in Aug.
- 1 Per Cent. Reduction if paid in Sept.
- 5 Per Cent. Additional after Nov. 24th.

OFFICE OF TAX COLLECTOR.

San Diego, Cal. July 2nd 1890.

Received of *Thos Whaley*
One hundred & Sixty Nine \$100

VOL. *2*
 PAGE *196* No. *847*
 TOTAL TAX, \$ *169.40*
 LESS *5* Per Cent *8.47*
 AMOUNT COLLECTED, \$ *160.93*
9-10 July 1890
DOLLARS

in full for all City Taxes for the fiscal year 1890, levied May 1890, for revenue purposes of said city.

DESCRIPTION	PUEBLO	LOT	BLK	ACRES	VALUE				
					Real Estate	Improvements	Personal	Deduction for Mortgage	Mortgages and Trust Deeds
<i>Pueblo Lands S 1/4</i>	<i>212</i>			<i>40</i>	<i>320</i>				
<i>" fact</i>	<i>232</i>			<i>9 1/10</i>	<i>336</i>				
<i>"</i>	<i>233</i>			<i>20</i>	<i>700</i>				
<i>" S 1/2</i>	<i>256</i>			<i>78 1/2</i>	<i>5102</i>				
<i>" E 1/2 of fact</i>	<i>1215</i>			<i>45</i>	<i>270</i>				
<i>La Playa</i>		<i>2</i>	<i>45</i>		<i>118</i>				
		<i>3</i>							
		<i>2</i>	<i>71</i>						
		<i>3</i>							
		<i>3</i>	<i>90</i>						
		<i>3</i>	<i>91</i>						
		<i>1</i>	<i>99</i>						
		<i>4</i>	<i>107</i>						
		<i>6</i>	<i>123</i>			<i>10</i>			
		<i>8</i>	<i>123</i>			<i>3</i>			
		<i>5</i>	<i>122</i>			<i>10</i>			
			<i>140</i>			<i>200</i>			
		<i>6</i>	<i>155</i>			<i>10</i>			
		<i>1</i>	<i>160</i>			<i>50</i>			
		<i>5 to 8</i>	<i>164</i>			<i>30</i>			
		<i>4</i>	<i>165</i>			<i>10</i>			
		<i>2</i>	<i>166</i>			<i>50</i>			
<i>Roseville</i>			<i>179</i>			<i>240</i>			
<i>Old San Diego</i>			<i>407</i>			<i>140</i>			
		<i>4</i>	<i>450</i>			<i>150</i>			
		<i>1</i>	<i>480</i>			<i>150</i>			
<i>Improvements on</i>		<i>1</i>	<i>480</i>				<i>500</i>		
			<i>487</i>			<i>100</i>			
<i>Middletown Capt R of W and 1/2</i>		<i>5</i>	<i>17</i>			<i>135</i>			
<i>and 1/2 left</i>		<i>6</i>	<i>17</i>						
<i>Except R of W</i>		<i>4</i>	<i>41</i>			<i>180</i>			
		<i>5</i>	<i>41</i>			<i>180</i>			
		<i>7 to 9</i>	<i>41</i>			<i>650</i>			
			<i>127</i>			<i>400</i>			
			<i>237</i>			<i>60</i>			
<i>New San Diego</i>		<i>B</i>	<i>762</i>			<i>238</i>			
		<i>C</i>	<i>762</i>			<i>237</i>			

*3rd Recd of
 SOA D. S. Recd
 July 24 1890 - 11 paid on
 m 7 12 212 83.20
 as by
 Thos*

*6-7-90
 by El Progreso on June 27-17
 San Diego 2 page 180*

in full for all City Taxes for the fiscal year 1890, levied May 1890, for revenue purposes of said city.

DESCRIPTION	PERCH.	LOT	BLK	ACRES	VALUE			
					Real Estate	Improvements	Personal	Deduction for Mortgage
					\$	\$	\$	\$
Pueblo Lands S n/4	212			40	320			
" " fact	232			7 9/10	336			
" "	233			20	700			
" " S n/2	256			78 1/2	5102			
" " E 1/2 fact	1215			45	270			
La Playa				2) 45	615			
				3) "	"			
				2) 71	"			
				3) "	"			
E 1/2				3	90			
				3	91			
				1	99			
				4	107			
				6	128			10
E 1/2				8	123			5
				5	122			10
					140			200
				6	155			10
				1	160			50
				5 to 8	164			30
				4	165			10
				2	166			50
Roseville					179			240
Old San Diego					410 7/8			140
					4 450			150
					1 480			150
Improvements on					1 480		500	
					487			100
Middletown					5 17			135
Union					6 17	Asset to Lehas Payne?		
Except R of W					4 41			180
					5 41			180
					7 to 9	41		650
					127			400
fact					237			60
New San Diego					B 762			238
					C 762			237

COAD linked
 in 1890-1891
 m 7/2 212 03.20
 anly
 1890

6-27-90
 by E. Proctor on Dec 27-17
 in Roll 2 page 180

RATE, \$1.00.

Total Value of all Property after Deductions. \$10940

Jay Kennedy
 COLLECTOR.
 Deputy.

1890 TAXES ARE DUE JUNE 2nd.

Delinquent November 24.

- 5 Per Cent. Reduction if paid in June.
- 3 Per Cent. Reduction if paid in July.
- 2 Per Cent. Reduction if paid in Aug.
- 1 Per Cent. Reduction if paid in Sept.
- 5 Per Cent. Additional after Nov. 24th.

OFFICE OF TAX COLLECTOR.

San Diego, Cal., June 30th 1890.

Received of *Thos Whaley*

VOL. 2
 PAGE 196 No.
 TOTAL TAX, \$ 169.40
 LESS: Per Cent. 847
 AMOUNT COLLECTED, \$ 160.93

DOLLARS

in full for all City Taxes for the fiscal year 1890, levied May 1890, for revenue purposes of said city.

DESCRIPTION	PUEBLO	LOT	BLOCK	ACRES	TAXES			Mortgages and Trust Deeds
					Real Estate	Improvements	Personal	
					\$	\$	\$	\$
<i>New San Diego N 1/2</i>		<i>C</i>	<i>763</i>		<i>450</i>			
<i>Unit 1/4</i>		<i>K</i>	<i>774</i>		<i>263</i>			
<i>Hortons Add D 1/2</i>		<i>D</i>	<i>44</i>		<i>7000</i>	<i>200</i>		<i>5000</i>
<i>Unit 1/2</i>		<i>D</i>	<i>171</i>		<i>103</i>	<i>1.00</i>		
<i>Bay View Homestead</i>			<i>17</i>		<i>1450</i>			
<i>Morse Add</i>			<i>35 & 36 62</i>		<i>60</i>			
			<i>11 to 14 64</i>		<i>100</i>			
			<i>5 & 6 66</i>		<i>80</i>			
			<i>45 & 46 66</i>		<i>60</i>			
			<i>26 & 27 67</i>		<i>80</i>			
			<i>9 & 10 84</i>		<i>70</i>			
			<i>35 & 36 86</i>		<i>20</i>			
			<i>3 & 4 87</i>		<i>50</i>			
			<i>40 87</i>		<i>25</i>			
			<i>27 & 28 86</i>		<i>20</i>			
			<i>35 90</i>		<i>6</i>			
			<i>27 to 30 90</i>		<i>24</i>			
			<i>46 96</i>		<i>35</i>			
			<i>33 98</i>		<i>35</i>			
			<i>34 to 37 97</i>		<i>16.5</i>			
			<i>5 to 19 98</i>		<i>153</i>			
			<i>20 98</i>		<i>15</i>			
			<i>7 to 12 114</i>		<i>150</i>			
			<i>18 & 19 115</i>		<i>30</i>			
			<i>7 to 10 116</i>		<i>80</i>			
			<i>25 & 26 116</i>		<i>25</i>			
			<i>39 & 40 116</i>		<i>40</i>			
			<i>3 to 5 97</i>		<i>60</i>			
			<i>38 & 39 97</i>		<i>20</i>			
<i>Morse Whaley & Dalton Trust tract</i>			<i>24 86</i>		<i>7</i>			
<i>Quebec Lot 1110</i>								
			<i>10 to 17 110</i>		<i>20</i>			
			<i>13 to 18 111</i>		<i>42</i>			
			<i>18 to 18 114</i>		<i>42</i>			
			<i>7 to 12 139</i>		<i>30</i>			

equal to my annual income up to 1000
any excess paid Dr. Bond.

in full for all City Taxes for the fiscal year 1890, levied May 1890, for revenue purposes of said city.

DESCRIPTION	PUEBLO	LOT	BLOCK	ACRES	VALUE				
					Real Estate \$	Improvements \$	Personal \$	Deduction for Mortgage \$	Mortgages and Trust Deeds \$
New San Diego N 1/2		C	763		450				
Unit 1/4		K	774		263				
Hortons Add D 1/2		D	44		7000	200		5000	
Unit 1/2		D	57		163	100			
Bay View Homestead			17		1450				
Morse Add		35836	62		60				
		11.5	141	64		160			
			586	66		80			
		45846	66			60			
			26727	67		80			
			9810	84		70			
		35836	86			20			
			344	87		50			
			41	87		25			
		27828	86			20			
			35	90		6			
		27.5	30	90		24			
			46	96		35			
			33	98		35			
		34.5	37	97		165			
		5.5	19	98		155			
			20	98		15			
		7.5	12	114		150			
			18819	115		30			
			7.5	10	116		80		
		25826	116			25			
		39840	116			40			27-40 Bond Mrs. Anna C. Kennedy of Morse.
			3.5	97		60			
		38839	97			20			Buy 1/2 of Bond Dr. Dorig.
Morse Whaley & Dalton Trust tract		24	86			7			
Quebec Lot 1140									
			Low 8, F, G & D	110		20			
			13.5	18	111		42		
			13.5	18	114		42		
			7.5	12	139		30		
Personal Property								295	

RATE, \$1.00.

Total Value of all Property after Deductions \$76940
Wm. Kennedy
 COLLECTOR.
 Deputy.

1890

BUSINESS RECORDS

THE SAN DIEGO UNION AND DAILY BEE.

THE SAN DIEGO WEEKLY UNION.

SAN DIEGO, CAL. July 2 1890.

M. *Thos. Whalley*

TO THE SAN DIEGO UNION COMPANY, DR.

FOR SUBSCRIPTION
From *Jan 1* 1890, to *July 1* 1890.

Received Payment,

\$ *85^x*

E. Roberts

TERMS, Invariably in Advance.

IF YOU FIND THIS SLIP UNDER YOUR DOOR, PLEASE CALL AT THE OFFICE.

OFFICE, 933 FOURTH ST., BET. D AND E.

THE SAN DIEGO UNION AND DAILY BEE.

THE SAN DIEGO WEEKLY UNION.

SAN DIEGO, CAL. *Sept 2* 1890.

M. *Thos. Whalley*

To The San Diego Union Company, Dr.

FOR SUBSCRIPTION
From *July 1* 1890, to *Sept 1* 1890.

Received Payment,

\$ *170*

J. DeWinnick

TERMS, Invariably in Advance.

If You find this Slip under your Door, please Call At the Office.

OFFICE, 933 FOURTH ST., BET. D AND E.

WHEN YOU PAY AT THE OFFICE BRING YOUR LAST RECEIPT WITH YOU.

San Diego, Cal., 189

M. *Whalley* Dr.

Address, *433 State*

To *Hiram Whitehouse*, For Subscription to THE DAILY UNION,

From *Dec 1* 1891, to *Jan 1* 1892 \$ *85*

Received Payment,

Terms, 25 Cents Per Month.
Bills Must be Paid Monthly.

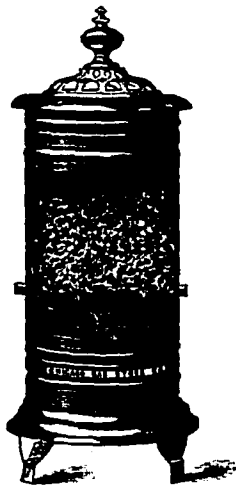
Dust Parker

IF YOU WANT THE PAPER STOPPED OR ADDRESS CHANGED, LEAVE WORD AT THE OFFICE.

OFFICE, 933 FOURTH STREET.

SUPPLEMENT.

CHICAGO GAS STOVE COMPANY



"CHICAGO" No. 3 D.

Nickeled base, legs, top, urn, etc. Highly polished copper reflector, asbestos flame plate. A very handsome stove and a satisfactory heater.

Height, 30 inches; diameter, 12 inches.

Consumption, according to pressure, 10 to 12 cubic feet per hour.

Price, \$12.00

"CHICAGO" No. 2 D.

Nickeled base, legs, top, urn, etc. Highly polished copper reflector, asbestos flame plate. A very handsome stove and a satisfactory heater.

Height, 28 inches; diameter, 6 inches.

Consumption, according to pressure, 8 to 10 cubic feet per hour.

Price, \$9.00



NOTE.—All Heaters will be fitted with natural gas burners or fuel water gas burners without extra charge.

GAS STOVES FOR COOKING AND HEATING.

SAN DIEGO, CAL.

JAN 1 1899

Mr. *John D. [unclear]*

To San Diego Gas and Electric Light Company, Dr.

Meter Statement at this date 1,000 feet. For Electric Light from _____
 " " last settlement 1,000 feet. to _____ \$ _____
 Gas consumed 1,000 cubic feet. \$ 1.00
 Discount if paid before the 5th,) \$ _____
 as per Agreement.)

Received payment for the Company

[Signature]
 Collector.

RATE: \$4.00 per 1,000 feet for the first 2,000 feet.
 \$3.50 " " all over

Examine Our New Agreement for CHEAP GAS.

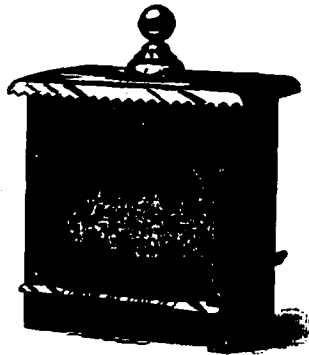
Get Orders for Tea at the Office.

See Rules and Regulations on the Back.

SUPPLEMENT.

CHICAGO GAS STOVE COMPANY.

"CHICAGO" No. 14 B.



The reflector is of highly polished copper, asbestos flame plate, nickered urn and foot rail. Cast front and top. Russia iron sides and back. Artistically and compactly made.

Height, 20 inches; depth, 10 inches; width, 18 inches. Opening of reflector: height, 11 inches; width, 14 inches.

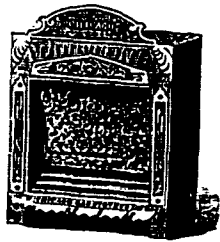
Consumption, according to pressure, 10 to 12 cubic feet per hour.

Price, - - - \$8.00

We also make this stove with nickered front and top plate.

Price, - - - \$10.00

"CHICAGO" No. 10 B.



Cast Front, highly polished copper reflector; asbestos flame plate, nickered foot rail, Russia iron sides and back.

Height, 18 inches; width, 14 inches. Opening of reflector: height, 10 inches; width, 11 inches.

Consumption of gas, according to pressure, 8 to 10 feet per hour.

Price, - - - \$6.50

We also make this stove with nickered front.

Price, - - - \$7.50

NOTE.—All Heaters will be fitted with natural gas burners or fuel water gas burners without extra charge.

Mr. _____
Bill for _____ 1890.

RULES AND REGULATIONS

— OF THE —

San Diego Gas and Electric Light Co.

1. Meters will be set on application being made at the office of the Company, and the inspector shall have free access to the premises lighted with gas for the purpose of examining meter or service pipe, or the removal of the same at the order of the Company.
2. In case the meter should fail to register, an average bill will be made and no bill for gas will be presented for a less amount than fifty cents per month.
3. A meter deposit, or a month's gas bill will be required in advance, for which a receipt will be given, and the amount paid will be returned to the consumer on ceasing to take gas.
4. Persons leaving premises lighted with gas must give timely notice at the Company's office, or they will be held responsible for gas used until such notice is given.
5. Persons moving into premises where there is a meter must apply at the office of the Company, if they wish to use gas on such premises.
6. The Company reserves the right to refuse to introduce gas into any premises until all arrears due for gas and service pipes are paid, and at any time to cut off the connection with the mains if necessary to protect the Company against abuse or fraud.
7. In case of a leak the gas must be shut off at the meter, and no light taken near the leak until after free ventilation, and notice given at the office of the Company, as no deduction will be made, nor will the Company be responsible for any damage caused by the escape of gas.
8. Any interference by persons not employees of the Company, with the meters, services or street mains, is strictly prohibited under penalty provided by law.
9. To guard against imposters, meter men will be provided with a certificate signed by the Secretary or Manager.
10. A strict compliance with the above rules, and the prompt payment of all bills due the Company, are conditions upon which gas will be supplied.



San Diego, Cal.

April 10 1899

Mr. Thos. Whaley

Bought of

Thos. M. Godfrey,

GROCERIES AND GENERAL MERCHANDISE.

SOUTHWEST CORNER FRONT AND D STREETS.

Accounts are due on the first of each month.

P. O. Box, 1098.

1010 # Wheat Hay

\$6.05

Paid Apr 17-99

Thos M Godfrey

Statement to check 1/91

1890			
Nov	1	J. Mission - Filling up basement & hallway	15
	2	Dr. Phillips - Dr. on Dr. M. L. to Nov 1/90	600
	3	Geo J Spinks painting roof	10
	5	Story & Johnson Const Co. Lumber	23 20
	17	Gas for Oct	1 20
	19	RR fares putting screen under window 16-5-24	2
	20	Geo J Spinks, advanced salary to Dec 1 st	15 50
		" " Stationers for office railings	30
	25	N. Menicko State & Co. tax 1890	36
	28	Water Co. water to Nov 15	2 60
	30	J. M. Stewart salary for Nov	20
Dec	8	S. P. Gas Co. gas for "	50
		Geo J Spinks advance salary for Dec	15 50
		" " rope for awning front office	20
	15	Dr. Phillips int Dr. M. L. to Dec 1/90	300
	21	Water Co. water to Dec 15	1 50
	21	Jeff Williams Com. writing to Rockaway.	1
	27	Stevens & Brockwell Ticket paper	2
1891		J. M. Stewart salary for Dec	20
Jan	9	S. P. Gas Co. gas for Dec	50
	27	" Water Co. water to 15 Jan	1 20
	31	Geo J Spinks, salary for Jan	15 50
		J. M. Stewart "	20
Feb	28	Geo J Spinks "	15 50
	"	J. M. Stewart "	20
	"	S. P. Gas Co. for Feb	50
	"	S. P. Gas Co. " 14	90
Mar	1	Balance on hand	1603 66

1891

1891

Feb 1 Due D J Phillips for fuel to date
" J Williams. Over on #1544 insurance

900
20250

110250

Money in Bank
Paid for rent -

46256

Behm for work
S D Coal Co "
S D Way Co "
David & Sons Co "
South S D Land Co
Jeff Williams
Richardson
Conklin & Hughes - Dec-Jan. Feb & March

105
1250
40
15
1450
20
10
160

86756

Deficiency

23494

Clarence Whaley & Dalton

1890

Oct 31	To balance on hand as per s to account		230 91
Nov 1	Advanced by The Whaley, to meet interest		
	" " E. J. Morse ^{for 2 mos. on 30 74}		
	" " A. D. Dalton ^{for 2 mos. on 30 74}		
	Paids to Coal Co to Dec 1		12 50
	" S. P. A. Way Co "		10
12	" Land & Loan Co "		15
14	" Smith S. D. Land Co "		12 50
19	" C. A. Davis 15		100
20	" Pacific Merc. Cloth Co Dec 1		25
Dec 4	" S. D. Coal Co Jan 1		12 50
	" S. D. Land Co "		12 50
5	" Jeff Williams Dec 1		10
	" S. P. A. Way Co Jan 1		10
	" S. D. Land & Loan Co "		15
11	" Lauderdale & Thompson 20		20
15	" C. A. Davis 15		100
20	" The Parker Mar 1		100
	" Jeff Williams Jan 1		10
	" J. S. Richardson Feb 1		10
Jan 4	" S. P. A. Way Co "		10
	" S. D. Coal Co "		12 50
10	" Land & Loan Co "		15
"	" S. D. Land Co "		12 50
16	" Conklin & Hughes Dec 1		80
	" Lauderdale & Thompson Feb 20		20
	" " " " " "		75
Feb 8	" S. D. Coal Co to Feb 1		12 50
	" J. S. Richardson "		10
	" S. P. A. Way Co "		10
14	" Land & Loan Co "		15
16	" Mrs. Ledman Moh 15		14
	" S. D. Land Co "		12 50
	" Pacific Merc. Cloth Co Feb 1		25
25	" Foxcroft & Math Mar 15		75
	" Jeff Williams Feb 1		10
27	" W. Bloomfield Apr 1		25
			1603 66

(1307.)

SAN DIEGO, CAL.

Post Office,

A. Whaley & Norman

Your Bill for Rent of Box No. *196* for the coming quarter, amounting to \$....., is now ready at this Office. You will oblige by making immediate payment of the amount.

Yours, respectfully,

A. D. NORMAN,

Postmaster.

[SEE OTHER SIDE.]

F.H. WHALEY.

R. MONARD.



WHALEY & MONARD

REAL ESTATE

AND GENERAL AGENTS.

CONSTRUCTION OF BUILDINGS
MANAGED
PROPERTIES SUBDIVIDED
AND PUT ON THE MARKET
LANDS BOUGHT SOLD
AND EXCHANGED ON COMMISSION.
HEADQUARTERS FOR SAN
DIEGO COUNTY RANCH LAND.

Rooms 3:4:5
MORSE WHALEY & DALTON
BLOCK

San Diego, Calif

814 Fifth St.,
Oakland, Cal. 1/8-90

Messrs. Whaley & Monard,

Yours of the 5th at hand, rather
surprised me as agent. You will please remit what
money is on hand that you say you saw, - and
as I hope as you say you may - before my
tax becomes delinquent, pay it, with the
money's due for collected and advise me it
is done, otherwise, in time that I can attend
to it before it goes to print as unpaid.

And oblige, Yours, etc,
Chas. Cummings.

Copy of letter received from Cummings, 1/10-90.

Grants by City,

212.		Date	B. Page
40. SE 1/4	Therese Tracy	Feb 27/69	6. 272
	S. a	aug 22/69	
160	D. D. R. R. Co.	Mar 5/70	8. 376
40. NW 1/4	The Bonds	Dec 7/70	11. 441
40. S.W. 1/4	Stinson & Klamb	Dec 31/71	11. 566
20. W 1/2 N.W. 1/4	J. R. Scherer	Feb 17/72	12. 222
20. E 1/2 N.W. 1/4		Feb 23/72	18. 62

WENDELL EASTON, President.

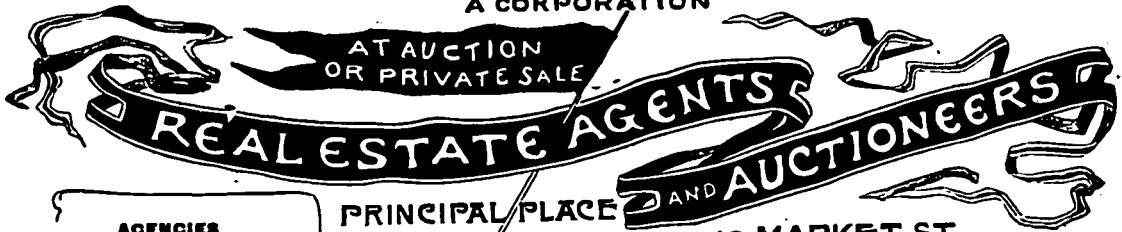
GEO. W. FRINK, Vice-President.

F. B. WILDE, Secretary.

ANGLO-CALIFORNIAN BANK, Treasurer.

EASTON, ELDRIDGE & COMPANY

A CORPORATION



AGENCIES
PACIFIC COAST LAND BUREAU
 At each County Seat
LOS ANGELES LAND BUREAU
 LOS ANGELES

PRINCIPAL PLACE
 OF BUSINESS **618 MARKET ST.**
 SAN FRANCISCO
 No 23 North Spring St Los Angeles
 No 826 Fifth St San Diego
 SUB AGENCIES AT EACH COUNTY SEAT OF THE STATE

Copy San Francisco, April 7 1890

By your Howard Trustee

Dear Sir:-

Having heretofore at your request made a deed to W. F. Patterson, of ^{which is mislaid or lost} Lots 34 to 40 1893 - Morse Add. sold to him under agreement dated Aug 30 - 1887 for the sum of 2250 upon which was paid 732.⁵⁰ leaving balance of 1517.⁵⁰ due ^{and} said Patterson having since assigned said agreement to Florence Kilham who now is Co-Trustee of C. H. Low & Co. you are requested to ^{make deed to} Mrs Florence Kilham Low wife of C. H. Low & Co. deliver said deed to Pacific Coast Land Bureau to whom said agreement and property was awarded in distribution. My original agreement and duplicate thereof is herewith forwarded.

Deed signed by
 Howard & Kilham
 to C. H. Low

4

Sluice & Klauke
 Land & Tools
 ?
 ?
 Granted to E & K as
 the S.W. 1/4

West 1/2 of N.W. 1/4
 20A - J. G. Schiller
 This land by City to Bunder by Bonds
 If Schiller got 20 acres and DeLaval
 20 acres ~~not~~ not granted then
 E 1/2 N.W. 1/4 20
 DeLaval

216
 The DeLaval

T. Whaley

not granted
by City to any
one.

Southern
Copper



40,000 ACRES

-OF-

CHOICE

Fruit and Farm Irrigated Lands

-IN-

20 AND 40 ACRE TRACTS.

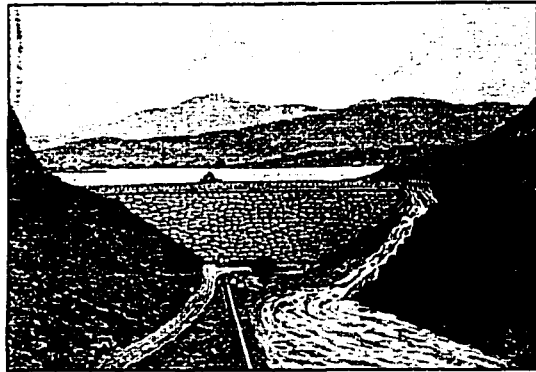
"CHULA VISTA," near National City, on National City & Otay Railway, five-acre tracts for HOMES, with ample supply of pure, cheap soft water. Fine ocean and mountain view.

Business and Residence property in San Diego and National City.

Circulars cheerfully furnished on application.

San Diego Land and Town Company.

GENERAL MANAGER'S OFFICE.



"Sweet Water Dam," built by San Diego Land and Town Co.

W. C. DICKINSON, General Manager.

National City, Cal., April 17/90 18

Whaley Deed Feb 27/69

San City of San Diego

"Containing 40 ²/₃ in Southern Corner of Lot No 212"

Thos. Whaley, Esq.

San Diego, Calif.

Dear Sir:--

(minor; in lead pencil made by Dickinson.)

We claim ownership to the S.W. 1/4 of Pueblo lot 212, and so returned it to the Assessor for taxation on our list. He has returned our list with a notation that this piece of land is assessed to you. Do you claim any ownership in it?

Yours truly,

W. C. Dickinson
Genl. Manager.

Get an Abstract

Whaley's interest

W. C. Dickinson

San Diego, Calif. April 17/90

Whaley Deed Feb 27/69

San City of San Diego

"Containing 40 2/3 in Southern Corner of Lot No 212"

Thos. Whaley, Esq.

Southwest 1/2

2 1/2 to 3 years of settlement
Aboriginal people are present
in the area

- 1871 24 years of settlement
- 1876 30 "
- 1881 35 "
- 1886 40 "
- 1891 45 "
- 1896 50 "
- 1901 55 "
- 1906 60 "
- 1911 65 "
- 1916 70 "
- 1921 75 "
- 1926 80 "
- 1931 85 "
- 1936 90 "
- 1941 95 "
- 1946 100 "
- 1951 105 "
- 1956 110 "
- 1961 115 "
- 1966 120 "
- 1971 125 "
- 1976 130 "
- 1981 135 "
- 1986 140 "
- 1991 145 "
- 1996 150 "
- 2001 155 "
- 2006 160 "
- 2011 165 "
- 2016 170 "
- 2021 175 "
- 2026 180 "
- 2031 185 "
- 2036 190 "
- 2041 195 "
- 2046 200 "
- 2051 205 "
- 2056 210 "
- 2061 215 "
- 2066 220 "
- 2071 225 "
- 2076 230 "
- 2081 235 "
- 2086 240 "
- 2091 245 "
- 2096 250 "
- 2101 255 "
- 2106 260 "
- 2111 265 "
- 2116 270 "
- 2121 275 "
- 2126 280 "
- 2131 285 "
- 2136 290 "
- 2141 295 "
- 2146 300 "
- 2151 305 "
- 2156 310 "
- 2161 315 "
- 2166 320 "
- 2171 325 "
- 2176 330 "
- 2181 335 "
- 2186 340 "
- 2191 345 "
- 2196 350 "
- 2201 355 "
- 2206 360 "
- 2211 365 "
- 2216 370 "
- 2221 375 "
- 2226 380 "
- 2231 385 "
- 2236 390 "
- 2241 395 "
- 2246 400 "
- 2251 405 "
- 2256 410 "
- 2261 415 "
- 2266 420 "
- 2271 425 "
- 2276 430 "
- 2281 435 "
- 2286 440 "
- 2291 445 "
- 2296 450 "
- 2301 455 "
- 2306 460 "
- 2311 465 "
- 2316 470 "
- 2321 475 "
- 2326 480 "
- 2331 485 "
- 2336 490 "
- 2341 495 "
- 2346 500 "
- 2351 505 "
- 2356 510 "
- 2361 515 "
- 2366 520 "
- 2371 525 "
- 2376 530 "
- 2381 535 "
- 2386 540 "
- 2391 545 "
- 2396 550 "
- 2401 555 "
- 2406 560 "
- 2411 565 "
- 2416 570 "
- 2421 575 "
- 2426 580 "
- 2431 585 "
- 2436 590 "
- 2441 595 "
- 2446 600 "
- 2451 605 "
- 2456 610 "
- 2461 615 "
- 2466 620 "
- 2471 625 "
- 2476 630 "
- 2481 635 "
- 2486 640 "
- 2491 645 "
- 2496 650 "
- 2501 655 "
- 2506 660 "
- 2511 665 "
- 2516 670 "
- 2521 675 "
- 2526 680 "
- 2531 685 "
- 2536 690 "
- 2541 695 "
- 2546 700 "
- 2551 705 "
- 2556 710 "
- 2561 715 "
- 2566 720 "
- 2571 725 "
- 2576 730 "
- 2581 735 "
- 2586 740 "
- 2591 745 "
- 2596 750 "
- 2601 755 "
- 2606 760 "
- 2611 765 "
- 2616 770 "
- 2621 775 "
- 2626 780 "
- 2631 785 "
- 2636 790 "
- 2641 795 "
- 2646 800 "
- 2651 805 "
- 2656 810 "
- 2661 815 "
- 2666 820 "
- 2671 825 "
- 2676 830 "
- 2681 835 "
- 2686 840 "
- 2691 845 "
- 2696 850 "
- 2701 855 "
- 2706 860 "
- 2711 865 "
- 2716 870 "
- 2721 875 "
- 2726 880 "
- 2731 885 "
- 2736 890 "
- 2741 895 "
- 2746 900 "
- 2751 905 "
- 2756 910 "
- 2761 915 "
- 2766 920 "
- 2771 925 "
- 2776 930 "
- 2781 935 "
- 2786 940 "
- 2791 945 "
- 2796 950 "
- 2801 955 "
- 2806 960 "
- 2811 965 "
- 2816 970 "
- 2821 975 "
- 2826 980 "
- 2831 985 "
- 2836 990 "
- 2841 995 "
- 2846 1000 "

Apine 20/90
1/10/1890

Blank with 2 lines in center
of page
by hand
of the
author
of the
book
of the
year
1890

1871 24 years of settlement
1876 30 "
1881 35 "
1886 40 "
1891 45 "
1896 50 "
1901 55 "
1906 60 "
1911 65 "
1916 70 "
1921 75 "
1926 80 "
1931 85 "
1936 90 "
1941 95 "
1946 100 "
1951 105 "
1956 110 "
1961 115 "
1966 120 "
1971 125 "
1976 130 "
1981 135 "
1986 140 "
1991 145 "
1996 150 "
2001 155 "
2006 160 "
2011 165 "
2016 170 "
2021 175 "
2026 180 "
2031 185 "
2036 190 "
2041 195 "
2046 200 "
2051 205 "
2056 210 "
2061 215 "
2066 220 "
2071 225 "
2076 230 "
2081 235 "
2086 240 "
2091 245 "
2096 250 "
2101 255 "
2106 260 "
2111 265 "
2116 270 "
2121 275 "
2126 280 "
2131 285 "
2136 290 "
2141 295 "
2146 300 "
2151 305 "
2156 310 "
2161 315 "
2166 320 "
2171 325 "
2176 330 "
2181 335 "
2186 340 "
2191 345 "
2196 350 "
2201 355 "
2206 360 "
2211 365 "
2216 370 "
2221 375 "
2226 380 "
2231 385 "
2236 390 "
2241 395 "
2246 400 "
2251 405 "
2256 410 "
2261 415 "
2266 420 "
2271 425 "
2276 430 "
2281 435 "
2286 440 "
2291 445 "
2296 450 "
2301 455 "
2306 460 "
2311 465 "
2316 470 "
2321 475 "
2326 480 "
2331 485 "
2336 490 "
2341 495 "
2346 500 "
2351 505 "
2356 510 "
2361 515 "
2366 520 "
2371 525 "
2376 530 "
2381 535 "
2386 540 "
2391 545 "
2396 550 "
2401 555 "
2406 560 "
2411 565 "
2416 570 "
2421 575 "
2426 580 "
2431 585 "
2436 590 "
2441 595 "
2446 600 "
2451 605 "
2456 610 "
2461 615 "
2466 620 "
2471 625 "
2476 630 "
2481 635 "
2486 640 "
2491 645 "
2496 650 "
2501 655 "
2506 660 "
2511 665 "
2516 670 "
2521 675 "
2526 680 "
2531 685 "
2536 690 "
2541 695 "
2546 700 "
2551 705 "
2556 710 "
2561 715 "
2566 720 "
2571 725 "
2576 730 "
2581 735 "
2586 740 "
2591 745 "
2596 750 "
2601 755 "
2606 760 "
2611 765 "
2616 770 "
2621 775 "
2626 780 "
2631 785 "
2636 790 "
2641 795 "
2646 800 "
2651 805 "
2656 810 "
2661 815 "
2666 820 "
2671 825 "
2676 830 "
2681 835 "
2686 840 "
2691 845 "
2696 850 "
2701 855 "
2706 860 "
2711 865 "
2716 870 "
2721 875 "
2726 880 "
2731 885 "
2736 890 "
2741 895 "
2746 900 "
2751 905 "
2756 910 "
2761 915 "
2766 920 "
2771 925 "
2776 930 "
2781 935 "
2786 940 "
2791 945 "
2796 950 "
2801 955 "
2806 960 "
2811 965 "
2816 970 "
2821 975 "
2826 980 "
2831 985 "
2836 990 "
2841 995 "
2846 1000 "

1890 28th August
1891 1st September
1892 1st October
1893 1st November
1894 1st December
1895 1st January
1896 1st February
1897 1st March
1898 1st April
1899 1st May
1900 1st June
1901 1st July
1902 1st August
1903 1st September
1904 1st October
1905 1st November
1906 1st December
1907 1st January
1908 1st February
1909 1st March
1910 1st April
1911 1st May
1912 1st June
1913 1st July
1914 1st August
1915 1st September
1916 1st October
1917 1st November
1918 1st December
1919 1st January
1920 1st February
1921 1st March
1922 1st April
1923 1st May
1924 1st June
1925 1st July
1926 1st August
1927 1st September
1928 1st October
1929 1st November
1930 1st December
1931 1st January
1932 1st February
1933 1st March
1934 1st April
1935 1st May
1936 1st June
1937 1st July
1938 1st August
1939 1st September
1940 1st October
1941 1st November
1942 1st December
1943 1st January
1944 1st February
1945 1st March
1946 1st April
1947 1st May
1948 1st June
1949 1st July
1950 1st August
1951 1st September
1952 1st October
1953 1st November
1954 1st December
1955 1st January
1956 1st February
1957 1st March
1958 1st April
1959 1st May
1960 1st June
1961 1st July
1962 1st August
1963 1st September
1964 1st October
1965 1st November
1966 1st December
1967 1st January
1968 1st February
1969 1st March
1970 1st April
1971 1st May
1972 1st June
1973 1st July
1974 1st August
1975 1st September
1976 1st October
1977 1st November
1978 1st December
1979 1st January
1980 1st February
1981 1st March
1982 1st April
1983 1st May
1984 1st June
1985 1st July
1986 1st August
1987 1st September
1988 1st October
1989 1st November
1990 1st December
1991 1st January
1992 1st February
1993 1st March
1994 1st April
1995 1st May
1996 1st June
1997 1st July
1998 1st August
1999 1st September
2000 1st October
2001 1st November
2002 1st December
2003 1st January
2004 1st February
2005 1st March
2006 1st April
2007 1st May
2008 1st June
2009 1st July
2010 1st August
2011 1st September
2012 1st October
2013 1st November
2014 1st December
2015 1st January
2016 1st February
2017 1st March
2018 1st April
2019 1st May
2020 1st June
2021 1st July
2022 1st August
2023 1st September
2024 1st October
2025 1st November
2026 1st December
2027 1st January
2028 1st February
2029 1st March
2030 1st April
2031 1st May
2032 1st June
2033 1st July
2034 1st August
2035 1st September
2036 1st October
2037 1st November
2038 1st December
2039 1st January
2040 1st February
2041 1st March
2042 1st April
2043 1st May
2044 1st June
2045 1st July
2046 1st August
2047 1st September
2048 1st October
2049 1st November
2050 1st December
2051 1st January
2052 1st February
2053 1st March
2054 1st April
2055 1st May
2056 1st June
2057 1st July
2058 1st August
2059 1st September
2060 1st October
2061 1st November
2062 1st December
2063 1st January
2064 1st February
2065 1st March
2066 1st April
2067 1st May
2068 1st June
2069 1st July
2070 1st August
2071 1st September
2072 1st October
2073 1st November
2074 1st December
2075 1st January
2076 1st February
2077 1st March
2078 1st April
2079 1st May
2080 1st June
2081 1st July
2082 1st August
2083 1st September
2084 1st October
2085 1st November
2086 1st December
2087 1st January
2088 1st February
2089 1st March
2090 1st April
2091 1st May
2092 1st June
2093 1st July
2094 1st August
2095 1st September
2096 1st October
2097 1st November
2098 1st December
2099 1st January
2100 1st February

or sell same.

Give up office. Remove signs. Permission to
allow safe to remain. Turn over all cash. Get your
mission to turn over in rear office.

TELEPHONE NO 874



Office of
The Blythe Company

ROOM 22. SAFE DEPOSIT BUILDING.

228. Montgomery Street

March 11/90
Dollars and I write that we wanted
to send up of \$1000 each and we would wait
San Francisco Cal 12 Feb 1890
to reply immediately. Answer to
Mr. Thomas Whaley
933 State St.
San Diego
the whiskey

Dear Sir, Yours of Feb 5th is received

It is impossible for me to adjust my note just
at this time. I have been detained here long
beyond my expectations to the utter neglect and
disarrangement of my San Diego affairs; but I
now hope I shall be able to return home before
very long and give my attention to my personal
affairs. Appreciating your courtesy in the past,
I remain

Very Respt. yours
Thomas McKim

Feb 21/90 Note to Cash and \$1000
and will await his return for balance

San Diego Aug 20/90

Mrs V.E. Smith, San Diego, Cal.

Dear Madam.

State, Co

I find on examination of ^{State, Co} ~~Roll~~ ^{Roll} for this year, that you are ~~assessed~~ ^{assessed} with
~~Roll 45-10th 96, more addition, is assessed~~
~~to you, and presume you would have~~
~~been~~ ~~assessed~~ ~~through~~ ~~mistake~~, ~~and~~ ~~the~~ ~~owner~~
~~and~~ ~~returned~~ ~~it~~, ~~but~~ ~~at~~ ~~your~~ ~~return~~ ~~of~~ ~~the~~ ~~same~~ ~~to~~ ~~me~~
~~of~~ ~~said~~ ~~lot~~. ~~It~~ ~~is~~ ~~now~~ ~~your~~ ~~property~~ ~~and~~ ~~you~~ ~~will~~ ~~be~~ ~~assessed~~
~~if~~ ~~you~~ ~~please~~ ~~inform~~ ~~me~~ ~~how~~ ~~to~~ ~~proceed~~?

Beulah Howard, Trustee, Section to you
March 29, 1885, 42-43-96 and June 13-87
July 25, 88, 44-45-96, and to you, with May 25-90
46-96, from my Record
I have your lots together, ~~and~~ ~~the~~ ~~purpose~~
~~of~~ ~~exchange~~ ~~46~~ ~~for~~ ~~47~~, ~~and~~ ~~the~~ ~~purpose~~
~~of~~ ~~making~~ ~~out~~ ~~the~~ ~~same~~ ~~as~~ ~~you~~ ~~will~~ ~~see~~ ~~the~~ ~~same~~
for \$100, which will give you control of the lots
from 42 to 47, inclusive, ~~and~~ ~~the~~ ~~purpose~~
of ~~the~~ ~~same~~ ~~as~~ ~~you~~ ~~will~~ ~~see~~ ~~the~~ ~~same~~

San Diego, August 20/90

Mr. F. A. Bantz

Countryman, Cedar

By Anadama I write to notify you
that the Escrow for lots 3 & 4 Block 87 ^{with} ~~will~~
expire Sept 1/90, and unless you send the
money (\$117) in a letter ~~before~~ ^{by} that date
you will forfeit all rights to the property,
according to the terms of the Escrow. I hope,
~~you will~~ you will be able to complete the same
~~before the time expires~~. ~~Preferably~~ you
get the deed by that date, as I believe the time is not
far distant when you will realize all you paid for them.
At the present time, ~~though~~ ^{nothing} ~~is~~ ^{is} an over very brisk yet
there is a great improvement compared with two years ago.
Many ~~improvements~~ ^{improvements} fine buildings have been erected besides ~~so~~
the ~~construction~~ ^{still work and} ~~the~~ ^{the} construction for Cedar road to Florence Heights and ~~at~~
~~tending~~ ^{tending} to Mission Valley. It is predicted by the same ~~company~~
have to extend this ~~road~~ ^{road} to ~~North~~ ^{North} ~~and~~ ^{and} ~~then~~ ^{then} ~~to~~ ^{to} ~~the~~ ^{the} ~~city~~ ^{city}
~~of~~ ^{of} ~~San~~ ^{San} ~~Diego~~ ^{Diego} ~~and~~ ^{and} ~~any~~ ^{any} ~~other~~ ^{other} ~~parts~~ ^{parts} ~~of~~ ^{of} ~~the~~ ^{the} ~~city~~ ^{city}
Value of property, in this district, you will find ~~it~~ ^{it} ~~is~~ ^{is} ~~increasing~~ ^{increasing}.

as it is a duplicate of the
N^o 116 of the 1150 contained in the
the ~~original~~ ^{being the N^o 116 of the 1150} ~~map~~ ^{of the tract}
~~fronting on D. St.~~ belongs ^{at the present time} ~~to the~~ family
to the parties to whom divided ^{each} ~~equally~~
^{excepting any} ~~more~~ ^{of the} ~~ground~~ ^{in the} ~~lot~~ ^{containing} ~~by~~ ~~him~~ ~~in~~ ~~1807~~
undivided. ^{that a much} ~~was~~ ~~done~~

~~On the date of this deed~~ ~~the~~ ~~land~~ ~~was~~ ~~deed~~ ~~to~~ ~~the~~ ~~parties~~ ~~to~~ ~~whom~~ ~~it~~ ~~was~~ ~~deed~~ ~~to~~
~~having~~ ~~disposed~~ ~~of~~ ~~all~~ ~~the~~ ~~interest~~ ~~in~~ ~~the~~ ~~land~~ ~~to~~ ~~the~~ ~~parties~~ ~~to~~ ~~whom~~ ~~it~~ ~~was~~ ~~deed~~ ~~to~~
~~had~~ ~~been~~ ~~deed~~ ~~to~~ ~~the~~ ~~parties~~ ~~to~~ ~~whom~~ ~~it~~ ~~was~~ ~~deed~~ ~~to~~
as per map of Moses Dejeuville's according to
map made by Fox 1871 ^{consequently} ~~also~~
~~in~~ ~~and~~ ~~undivided~~ ~~as~~ ~~in~~ ~~the~~ ~~map~~ ~~made~~ ~~by~~ ~~Fox~~ ~~in~~ ~~1871~~
~~owned~~ ~~therein~~ ~~which~~ ~~would~~ ~~include~~ ~~the~~ ~~land~~ ~~to~~ ~~be~~ ~~deed~~ ~~to~~
Subsequently acquired.

in the distribution of lots in block 116 and
one lot in block 125 (which was the subject
of the ^{conveyance} ~~conveyance~~ ~~of~~ ~~the~~ ~~land~~ ~~to~~ ~~the~~ ~~parties~~ ~~to~~ ~~whom~~ ~~it~~ ~~was~~ ~~deed~~ ~~to~~
Howard decided that ~~the~~ ~~land~~ ~~to~~ ~~be~~ ~~deed~~ ~~to~~ ~~the~~ ~~parties~~ ~~to~~ ~~whom~~ ~~it~~ ~~was~~ ~~deed~~ ~~to~~
of ~~the~~ ~~land~~ ~~to~~ ~~be~~ ~~deed~~ ~~to~~ ~~the~~ ~~parties~~ ~~to~~ ~~whom~~ ~~it~~ ~~was~~ ~~deed~~ ~~to~~
then made in 1871.

Dear Grand May 24, 1890

Dear D.

I rec^d your favor of 16. inst giving
me a history of Mr. Mormon. I thought
to have the card he gave me, you will see that
he explained himself by his former name
in the card ~~and you will see~~ I am always
content, he was a young fellow who
he introduced as his Brother. Mr. Stewart
as written me & I have answered
I include you card & slip a card

Yours truly

John R. Blake

I have not my paper since the
1st of May. Mormon left Kasaan
Card as his friend

June 3/90. E. S. Babcock Jr says Kasaan Co respects
him without permission. Took the names of the other
reference and says he will write to them and inform them
how to contact him.

June 7/90. J. W. Adams says he probably saw me he is
refer to him, but with a card that he might not
refer to him in case he wanted a reference. That
he would write to have him to take his name from
the card as Mr. Adams had mentioned him as his
friend. I would have to explain Mr. Adams.

some of us to Howard, and I am not sure that this will do it,
but a deed signed by six of us to the others with the exception of
to Drink, will certainly do it.

Previously to ~~now~~ ~~leaving~~ we talked the matter over
before more light we ~~you~~ had considered the fact about
this matter and supposed a deed to be signed by Malley, Taber,
Easton, Drink, Wilder and Pennell dividing the property
devised from Elmstead, to Moore, and Dalton & signed
and acknowledged it, and Dalton going to England
took it with him to get Drink to sign and then forward
to you to execute as also Easton and to you as Executor
of Pennell's Estate. Moore suggested that I write to you and
to say that as there might be delay on account of an
order from Court to authorize you to sign for Penn-
nell, to go on complete the present deed as far as
possible and return it for record, leaving that for Pen-
nell to be put in a future deed. It is since writing

this letter that I perceive that ~~an error was committed~~ ~~only the title~~
to talk as well as ~~some~~ ~~share~~ ~~in~~ ~~the~~ ~~deed~~ ~~and~~ ~~that~~ ~~it~~ ~~will~~ ~~have~~
to do with the other parties ~~in~~ ~~the~~ ~~deed~~ ~~in~~ ~~book~~ ~~110~~ ~~125~~
straighten out their title, ~~but~~ ~~the~~ ~~case~~ ~~is~~ ~~not~~ ~~con~~ ~~clusive~~ ~~in~~ ~~the~~ ~~title~~
before the deed from Pennell's Estate is ~~signed~~ ~~and~~ ~~you~~ ~~have~~ ~~authority~~ ~~to~~ ~~sign~~ ~~for~~ ~~Pennell~~ ~~and~~ ~~it~~ ~~may~~ ~~be~~ ~~well~~
to hold the deed from Pennell's Estate, ~~though~~ ~~then~~ ~~there~~ ~~will~~ ~~be~~ ~~no~~ ~~objection~~ ~~to~~ ~~it~~
as ~~the~~ ~~parties~~ ~~to~~ ~~the~~ ~~deed~~ ~~would~~ ~~not~~ ~~be~~ ~~in~~ ~~any~~ ~~way~~ ~~pre~~ ~~judiced~~ ~~by~~ ~~it~~

you may sign the deed and take it to Dalton

San Diego, Aug 21/90.

P. B. Wilde Esq. C/o. Eastern California
Dr. Sr. Calif. Trans. Co., Inc.

Mr. Wilde, to whom we send 2 lots
in Block 95 on a fronting on D. St. (and given
by E. W. Morse, before he decided to buy from Howard,
Purdy) explained to me that he had no title,
to the front portion of his lot, and enquired if he
should apply to Howard for a deed? I told
him I would examine into the matter, and if
necessary have a deed made that would make
good his title, ^{not only} ~~but also~~ ^{of the remaining fronting on D. St.} ~~all~~ ^{part} ~~of~~ ^{of} ~~the~~ ^{of} ~~lot~~ ^{of} ~~116~~ ^{of} ~~and~~ ^{of} ~~125.~~

in B.L.R.

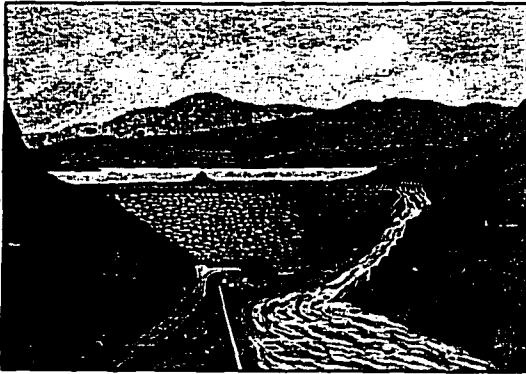
Find no records - (Can give abstract of
Encumbrances) showing that title to N 1/2, 1150 was
at one time in E. W. Morse, who conveyed to Horton
who conveyed to Blumsted, who conveyed to
Morse, Whaley, Dutton, ~~Perrin~~ Easton, Frank
Wilde & Pennell, all his interests in B.L.R. 95
116 & 125. ^{PL} ~~none~~ ^{each} ~~individual~~

~~Had the deed shown to me made by E. W. Morse, and I would have
been necessary in regard to Block 95. The interest due to the S. 1/2 of N. 1/2, 1150, that~~

portion of the NB 1/4 1150 ^{from cancelled} might have been included in the same
and be him, thus making the title good to the joint lots in
the other blocks west.

221

Amos W. Co.



• SWEETWATER DAM •

NEAR NATIONAL CITY, BUILT BY SAN DIEGO LAND & TOWN CO.
 Length at base 76 feet Thickness at top 12 feet
 " top 396 " Height of dam from bed rock, 93 "
 Thickness at base 46 " Reservoir covers 700 acres
 Capacity 6,000,000,000 gallons

CHARLES E. HEATH

WALLACE D. DICKINSON

GEORGE W. DICKINSON

• C • E • HEATH • & • CO •
 • GEN'L AGENTS •
 SAN DIEGO LAND AND TOWN COMPANY
 ≡ 922 FIFTH STREET ≡

IRRIGATED FRUIT LANDS, THE BEST IN SOUTHERN CALIFORNIA. CHULA VISTA FIVE ACRE TRACTS FOR ELEGANT SUBURBAN HOMES. BUSINESS & RESIDENCE PROPERTY IN SAN DIEGO & NATIONAL CITY, CAL

SAN DIEGO, CAL. July 30th 1890

Received of Thomas Whaley
 fifty dollars, in full for fee in re Whaley vs
 Dalton (partition suit)

Kendrick and Franklin
 by E. W. M.

E. W. M. agrees to pay 1/2 of above.

Paid July 2/90
 Whaley

more 1/2 above 25
 1/2 costs 5
 1/2 abstract 3 1/2
 \$ 33 75

1/2 of 2000

George Heale & wife agree to deliver to the
Land and Town Co. (upon the payment ^{of \$40.00}) to them or
such parties that they may authorize to receive
the same, - a deed free and clear of encumbrance,
except taxes of 1890, to land sufficient to main-
tain their ^{dam} with water at the height it was previous
to the order given by Court. Also to ~~retract~~
withdraw any and all suits instituted by them
now pending, at their cost, and to deliver to
said L. & T. Co., a receipt in full of all
demands, upon receiving from said Company a
receipt to the same effect. Pendleton and wife
are to quit claim to the same Town Co., the land
required ^{by them to maintain} for their dam with water at
the height it was previous to the order given
by Court, to be specified by metes and bounds.
Also ^{Pendleton & wife opt. to} quit claim ~~to~~ ^{to} Heale and wife ~~to~~
the one undivided half of the land ^{outside} of that required

A. Phillips & Co.

Boston
& California

Acquisition Agents

116 WEST FIRST ST. LOS ANGELES, CAL.
288 WASHINGTON ST. BOSTON, MASS.
198 SOUTH CLARK ST. CHICAGO, ILL.
4 NEW MONTGOMERY ST. SAN FRANCISCO, CAL.
(UNION PALACE HOTEL)

116 West First Street.

Los Angeles, Cal.

1885

by the company for their dam, deducting there-
from the amount, and within the tract of
1750 acres, deeded by Mrs Pendleton to Mrs
and conveyed by her to Neale ^{and}
wife, deducting therefrom any portion which
may have been sold since Mrs Pendleton
conveyed the same.

Neale and wife are to convey to Pendleton
and wife the undivided one-half of the land out-
side of that required by the Land & Town Co.
And for the purpose ^{of making} this settlement
said Neale & wife shall employ Thomas Whaley
to effect the same and provided he does so within
six months from the date they agree to deliver to
him a deed for one-half of this land conveyed
to them, upon completion of such services.

Signed

Neale & Wife.

A. Phillips & Co.
Boston & Panama
Excursion Agents

116 WEST FIRST ST. LOS ANGELES, CAL.
 268 WASHINGTON ST. BOSTON, MASS
 198 SOUTH CLARK ST. CHICAGO, ILL.
 4 NEW MONTGOMERY ST. SAN FRANCISCO, CAL.
 (UNDER PALACE HOTEL)

116 West First Street.

Los Angeles, Cal. _____ 1895

The Land ^{Ed} Town les. agree to pay to George Neale and wife, \$40000 ^{U.S. Gold Coins} upon their seeing to them, free and clear of incumbrance, land sufficient to maintain their dam with water - at the height it was previous to the order given by court. Also a quit-claim deed from Penateton ^{Ed} wife to the same land. Also to withdraw any and all suits instituted by them, now pending, at their cost, and to deliver to said Neale ^{Ed} wife receipt in full of all demands, they giving receipt to the same effect to the Company.

And for the purpose of effecting this settlement, said Company shall empower Thomas Whaley to effect the same, and provided he does so, within six months from the date hereof, they agree to pay him upon the completion of such services rendered the sum of Ten Thousand Dollars (\$10000 ^{U.S. Gold Coins}).

(Signed) J. D. Land & Town les.

A. Phillips & Co.

Boston and California

Excursion Agents



116 WEST FIRST ST. LOS ANGELES CAL.
268 WASHINGTON ST. BOSTON MASS
198 SOUTH CLARK ST CHICAGO ILL
4 NEW MONTGOMERY ST. SAN FRANCISCO CAL
(UNDER PALACE HOTEL)

116 West First Street.

Los Angeles, Cal. 1885

to B.

George Pundleton & wife agree to quit claim to Land and Town Co., land sufficient to maintain their dam with water at the height it was previous to the order given by ~~board~~. Also to quit claim to Skeale and wife the one undivided half of the ^{improving} land ^{outside of that} ~~required by~~ the company for their dam, and ~~within~~ the tract of 1750 acres, deeded by Mrs Pundleton to Mrs ~~and conveyed by her to Skeale and wife, deducting therefrom any portion which may have been~~ ^{paid} sold since Mrs Pundleton conveyed the same.

Also to withdraw any and all suits instituted by them now pending and to ~~submit~~ ^{exchange} to said Land and Town Co., said Skeale & wife receipts in full of all demands upon ~~any~~ ^{said} ~~from said L. & T. Co.~~ and said Skeale & wife ~~and to~~

Given for the purpose of ^{affirming} ~~certainty~~

A. Phillips & Co.

Boston and
California

Excursion Agents

116 WEST FIRST ST. LOS ANGELES, CAL.
268 WASHINGTON ST. BOSTON, MASS
198 SOUTH CLARK ST. CHICAGO, ILL
4 NEW MONTGOMERY ST. SAN FRANCISCO, CAL.
(UNDER PALACE HOTEL)

116 West First Street.

Los Angeles, Cal.

1885

[Faint, mostly illegible printed text at the top of the document]
This settlement, said Pundleton and wife shall
impose ~~themselves~~ to effect the same, pro-
vided he does so within six months from
the date hereof, free of cost to Pundleton
and wife; but any compensation which he
may receive from Geo. Hale & wife, or the
S. D. Land ^{and} Town Cos., for services rendered
there he shall be entitled to hold, without
question from Pundleton & wife.

(Signed)

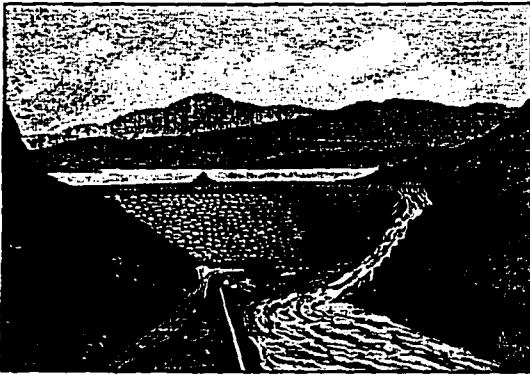
The Eastern Hotel

The ~~money~~ ~~benefit~~ which ~~of~~ ~~right~~ ~~belongs~~
~~to~~ ~~you~~ ~~and~~ ~~me~~ belongs to Healey, or to
his successors in interest, having you
and ~~for~~ ~~me~~ the entire lot.

~~But~~ ~~we~~ ~~will~~ ~~not~~ ~~argue~~ ~~the~~ ~~question~~
~~of~~ ~~the~~ ~~money~~ ~~being~~ ~~paid~~ ~~to~~ ~~me~~ ~~and~~ ~~you~~ ~~and~~ ~~not~~ ~~to~~ ~~Healey~~ ~~and~~ ~~his~~ ~~successors~~ ~~in~~ ~~interest~~

~~The~~ ~~check~~ ~~should~~ ~~have~~ ~~been~~ ~~paid~~ ~~to~~ ~~me~~ ~~and~~ ~~you~~ ~~and~~ ~~not~~ ~~to~~ ~~Healey~~ ~~and~~ ~~his~~ ~~successors~~ ~~in~~ ~~interest~~
I ~~paid~~ ~~directly~~ ~~to~~ ~~the~~ ~~parties~~ ~~entitled~~ ~~to~~ ~~receive~~ ~~it~~ ~~and~~ ~~the~~ ~~balance~~ ~~to~~ ~~me~~ ~~and~~ ~~you~~ ~~and~~ ~~not~~ ~~to~~ ~~Healey~~ ~~and~~ ~~his~~ ~~successors~~ ~~in~~ ~~interest~~
The money ~~is~~ ~~in~~ ~~my~~ ~~possession~~ ~~and~~ ~~it~~ ~~is~~ ~~not~~ ~~in~~ ~~Healey's~~ ~~possession~~ ~~and~~ ~~it~~ ~~is~~ ~~not~~ ~~in~~ ~~the~~ ~~possession~~ ~~of~~ ~~his~~ ~~successors~~ ~~in~~ ~~interest~~

records are not as they might be.
There is probably, including the amount
for your benefit and for other parties ~~several~~
hundred dollars which amount
we are endeavoring to ~~bring~~ ~~up~~ ~~and~~ ~~fill~~
the responsibility, ~~which~~ ~~is~~ ~~not~~ ~~fully~~ ~~settled~~.
It will take some time and we shall
require a lawyer. ~~There~~ ~~will~~ ~~be~~ ~~at~~
some expense ~~and~~ ~~uncertainty~~ of
recovering anything. Our fee will be
one half of amount recovered, one quarter
to you and one quarter to the present
owner of the property, an amount of ~~about~~
to \$500 - ~~you~~ ~~being~~ ~~about~~ ~~\$2500~~. ~~Because~~
of ~~the~~ ~~uncertainty~~ ~~of~~ ~~the~~ ~~amount~~ ~~to~~ ~~be~~ ~~recovered~~ ~~and~~ ~~the~~ ~~fact~~ ~~that~~ ~~the~~ ~~amount~~ ~~to~~ ~~be~~ ~~recovered~~ ~~is~~ ~~not~~ ~~in~~ ~~my~~ ~~possession~~ ~~and~~ ~~it~~ ~~is~~ ~~not~~ ~~in~~ ~~the~~ ~~possession~~ ~~of~~ ~~Healey~~ ~~and~~ ~~his~~ ~~successors~~ ~~in~~ ~~interest~~



CHARLES E. HEATH

WALLACE D. DICKINSON

GEORGE W. DICKINSON

• C • E • HEATH • & • CO •

• GEN'L AGENTS •

SAN DIEGO LAND AND TOWN COMPANY

≡ 922 FIFTH STREET ≡

IRRIGATED FRUIT LANDS, THE BEST IN SOUTHERN CALIFORNIA. SINGLE TRACTS, FIVE ACRES TRACTS FOR ELEGANT SUBURBAN HOMES. BUSINESS & RESIDENCE PROPERTY IN SAN DIEGO & NATIONAL CITY, CAL.

• SWEETWATER DAM •

NEAR NATIONAL CITY, BUILT BY SAN DIEGO LAND & TOWN CO.

Length at base	75 feet	Thickness at top	12 feet
" top	396 "	Height of dam from bed rock	90 "
Thickness at base	16 "	Reservoir covers	700 acres
Capacity			6,000,000,000 gallons

SAN DIEGO, CAL. Aug 16 1898

Dear Sir,
 I have the honor to acknowledge the receipt of your letter of the 15th inst. regarding the matter of the purchase of the land for all of lots 5 & 6 - Block 112 - which is owned by me G. B. ...
 I am sorry to hear that you are unable to purchase the land at the price which you offered, but I am glad to hear that you are able to purchase the land at a price which is satisfactory to you.
 I am, Sir, very respectfully,
 Yours truly,
 Charles E. Heath

1890 TAXES ARE DUE JUNE 2nd.

Delinquent November 24.

- 5 Per Cent. Reduction if paid in June.
- 8 Per Cent. Reduction if paid in July.
- 2 Per Cent. Reduction if paid in Aug.
- 1 Per Cent. Reduction if paid in Sept.
- 5 Per Cent. Additional after Nov. 24th.

W. H. GARDNER
OFFICE OF TAX COLLECTOR.

San Diego, Cal., 7/24 1890.

Received of

Mr. Whaley
310

DOLLARS

VOL. 1

PAGE 1

No. _____

TOTAL TAX, \$ 3-70

3 Per Cent. 10
AMOUNT COLLECTED, \$ 310

in full for all City Taxes for the fiscal year 1890, levied May, 1890, for revenue purposes of said city.

DESCRIPTION	LOT	BLOCK	ACRES	VALUE				
				Real Estate	Improvements	Personal	Deduction for mortgage	Mortgages & Trust Deeds
<i>Cueblo Land In E 1/2</i>	<i>712</i>		<i>40</i>	<i>\$ 70</i>	<i>\$</i>	<i>\$</i>	<i>\$</i>	<i>\$</i>

RATE, \$1.00.

Total Value of all Property after Deductions. \$ 320

W. H. Gardner
COLLECTOR.
By *C. J. Palmer* Deputy.

FRANZBL, SUNDARDNER & CO. PRINT.

1890 TAXES ARE DUE JUNE 2nd.

Delinquent November 24.

- 5 Per Cent. Reduction if paid in June.
- 3 Per Cent. Reduction if paid in July.
- 2 Per Cent. Reduction if paid in Aug.
- 1 Per Cent. Reduction if paid in Sept.
- 5 Per Cent. Additional after Nov. 24th.

OFFICE OF TAX COLLECTOR.

San Diego, Cal., July 8 1890.

Received of

Mrs. Anna E. Whaley

Eight & 00/100

DOLLARS

VOL. *4*

PAGE *79*

No. _____

TOTAL TAX, \$ *8.00*

Per Cent. *43*

AMOUNT COLLECTED, \$ *8.12*

in full for all City Taxes for the fiscal year 1890, levied May, 1890, for revenue purposes of said city.

DESCRIPTION	LOT	BLOCK	ACRES	VALUE				
				Real Estate	Improvements	Personal	Deduction for mortgage	Mortgages & Trust Deeds
<i>Old San Diego</i>	<i>2</i>	<i>406</i>		\$ <i>30</i>	\$	\$	\$	\$
<i>Except R. of W.</i>	<i>3</i>	<i>406</i>		<i>30</i>				
<i>New San Diego</i>	<i>2</i>	<i>157</i>	<i>55</i>	<i>1300</i>	<i>700</i>		<i>1200</i>	

RATE, \$1.00.

Max Kennedy

Total Value of all Property after Deductions. *\$ 8.00*

COLLECTOR.

By _____ Deputy.

FRANZEN, BUNBARDNER & CO. PRINT.

San Diego, Cal., May 21, 1890.

TO OUR CONSUMERS:--

We are pleased to announce that our consumers have generally accepted the liberal terms offered by our Agreements, over 80 per cent. of our total output now being supplied at the New Rates. As announced in the daily papers on the 1st inst., we have withdrawn all special rates and discounts except under the agreements, and take this opportunity to remind all who have signed the Agreements to pay at the office of the Company before the 5th of each month to get the reduced rate. The remaining few of our consumers who have not yet availed themselves of the reduction offered may do so by calling at the office before the 5th prox. and signing Agreements. To such the benefit of the reduced rate will be allowed on gas used during the present month.

The enclosed rate sheet is presented to our Consumers to enable them to tell at a glance the amount of their bills at the regular rates and under the Agreements. We would especially recommend that all should learn to read their meters and with the aid of enclosed card calculate the amount of their bills each month.

Very truly yours,

SAN DIEGO GAS & ELECTRIC LIGHT CO.

R. M. POWERS, Pres. and Gen. Mgr.

Handwritten scribbles and initials at top right.

SAN DIEGO, CAL., April 14, 1880.

Handwritten initials or mark on the right margin.

DEAR SIR:--When the reduction in Gas Rates was recently proposed the intention was to offer the low rate to new consumers for three months, and if the business of the Company should be increased thereby to extend the rate to all consumers. We have now determined to offer the reduced rate to all present consumers and give them the benefit of the reduction immediately. If you should desire to take advantage of this offer so as to include the gas for the month of April, please call at the office at once and sign agreement. ^{for 2 yrs} The reduction ranges from 21 1-2 per cent. to 37 1-2 per cent., and, with the exception of two large cities, is the cheapest gas on the Coast. At a rate of \$2.50 and \$2.75 per 1000 feet for gas you cannot afford to use oil, as you get a great deal more light for the money. We expect within the month to get every business house in the city to put in gas, and the result will be well-lighted and cheerful stores, more people on the streets and more business for the merchants. You can assist the Company in carrying out its plans for furnishing cheap light by inducing neighbor to take gas.

Very truly yours,

R. M. POWERS, Pres.

San Diego Gas and Electric Light Co.

I accept for 2 yrs, provided I keep house as before, reserving right to use coal and kerosene, for I am not present using same. I have made out agreements in duplicate. [unclear] to sign - April 14/1880

Agreement.

This Agreement made this 19th day of April, 1890, by and between the SAN DIEGO GAS AND ELECTRIC LIGHT COMPANY, a Corporation, the party of the first part, and John Whaley, the party of the second part.

WITNESSETH, 1st. That the party of the first part for and in consideration of the continued use of not less than one-half the present average consumption of gas on the following described premises to-wit: the Lantern at No. 133rd Street, in the City of San Diego, County of San Diego, State of California, or other premises in said city on the line of the gas mains of the party of the first part, to which the party of the second part may remove, hereby agrees and binds itself to supply, under its existing rules and regulations, at the premises above described, (except in cases of unavoidable accident) all the gas which may be required to properly illuminate the same, for a period of five years next ensuing. The gas so furnished shall at no time be of less power or purity than the present standard. That it will accept in full payment for gas so furnished, in accordance with the terms of this agreement, the sum of Two Dollars and Seventy-five Cents per Thousand Cubic Feet, if paid at the office of the Company within five days after the monthly bill shall have become due, but in case such payment is not made within the time specified, then the regular rates shall prevail, and such regular rates shall continue in force until all bills due the party of the first part shall be paid in full. All bills to be due on the 1st day of each month.

2nd. That the party of the second part, he heirs and assigns, for and in consideration of the reduction in the price above specified, hereby agrees to receive from the party of the first part all the gas necessary to properly illuminate the premises above described, or other premises to which he may remove, in quantity not less than one-half the present average consumption, and will pay the rates therefor as above provided, and that he will not, during the period above mentioned, introduce into or use on said premises oil lamps, arc or incandescent electric lights, gas or other illuminating power, except as may be furnished, or permitted in writing to be used, by the party of the first part.

3rd. It is further agreed and understood by both parties to this agreement that if, during the period mentioned, the City Council shall pass and the party of the first part shall accept any ordinance by virtue of which the price of gas to all private consumers in said city is reduced below the price named in this agreement, then and in that case the said party of the second part shall not thereafter be required to pay any price in excess of that named in said ordinance, but shall have the benefit of any general reduction in price which may be made by ordinance, and by the Company, but in all other respects this agreement shall continue in full force and effect during the period aforesaid.

IN WITNESS WHEREOF, the parties hereto have hereunto set their hands and seals.

John Whaley THE SAN DIEGO GAS AND ELECTRIC LIGHT COMPANY.

By John Whaley

SEAL

John Whaley

SEAL

Property from E. Whaley in La Playa -

U.S. Lot 2. Blk 45-

"	"	3	"	"	
"	"	2	"	71	
"	"	3	"	"	
"	B $\frac{1}{2}$	3	"	90	
"	"	3	"	91	
"	"	1	"	99	
"	"	4	"	107	
"	"	5	"	122	
"	"	6	"	123	
B $\frac{1}{2}$	"	8	"	123	
all				140	
"	"	6		155-	
"	"	1		160	
"	"	5		164	
"	"	7		"	
"	"	8		165-	
"	"	2		166	

More Addition

27. 28. 29 & 30 in 90

& 75 each -

N. H. CONKLIN, President.
COL. W. J. FARROW, Vice-President.

OFFICE OF

BRYANT HOWARD, Treasurer.
G. P. CLAPP, General Manager.

San Diego Iron & Nail Manufacturing Co.

San Diego, Cal., May 19th 1890.

Mr C. J. Young,

Dear Sir

I write, presuming that you have re-
turned to the City and if so please
call upon me at my residence
933 State St. and probably we may
arrange for the payments due on the
purchase of Lot 9 & 10, 15th St. and
addition purchased by you more than
two years ago from Pacific Coast Land
Bureau. I am the legal holder of
the duplicate agreement and entitled
to receive the balance of the money
due thereon

Yours truly
Bryant Howard
John W. Halley & Dalton

San Diego Cal -

Aug 25th 1890 -

To Honl Bd, of Alderman -
City of San Diego -

About June 2nd '90 I applied
to your Honl Bd for the cancellation
of a City Tax Sale Certificate against
Lot 5 in Blk. 41, M.T., wrongfully sold
for Taxes 1887, the property having
been assessed to Morse Whaley and Dalton,
and paid ~~for~~ by them for that year -

My communication, fully explaining the
matter, I understood, was referred to
the City Attorney, - since which time
I have heard nothing further in re-
gard to it, and wishing to clear
my property from the cloud of title,
~~and~~ to call your attention again to
the matter -

Yours Respect -
Morse Whaley

Permit me

Board of State Viticultural Commissioners.

OFFICE OF THE CHIEF EXECUTIVE VITICULTURAL OFFICER.

San Francisco, Jan'y 10th, 1890

OFFICERS AND MEMBERS OF THE BOARD.

CHAS. A. WETMORE, President, San Francisco,
Commissioner for the San Francisco District.
EMAU DUTRE, Vice-President, Santa Rosa,
Commissioner for the Russian District.
CHAS. KRUG, Treasurer, St. Helena, Yuba County,
Commissioner for the Russian District.
J. DEBARTH RHODE, San Gabriel, Los Angeles County,
Commissioner for the Paso de Lopez.
JOHN T. DOYLE, San Francisco,
Commissioner for the State of Lopez.
WM. S. MANLYVE, Portico, Sacramento County,
Commissioner for the Sacramento District.
GEO. WEST, Shaston, San Joaquin County,
Commissioner for the San Joaquin District.
L. J. ROSE, Los Angeles, Los Angeles County,
Commissioner for the Los Angeles District.
G. G. BLANCHARD, Placerville, El Dorado County,
Commissioner for the El Dorado District.
CHAS. E. YERRILL, Berkeley,
Commissioner for the El Dorado District.
CLARENCE J. WETMORE, Manager of Hall and Experimental
Garden.
CHAS. A. WETMORE, Chief Executive Viticultural and Health
Officer.

OFFICE OF THE BOARD:
Platts Hall, 216 Montgomery St., San Francisco, Cal.

J. H. Whaley, Esq
Dear Sir: Your kind favor rec'd. -
also one from the firm. I trust you
will straighten up your affairs without
embarrassment - and meanwhile have
simply notified Mess Cornwall, Banker
& Lohman to remit to me direct - or
withhold payment until I come down
which may be soon. I do not know
the name of the other tenant - but you can
for the present collect from him, if you
will and remit. You may also remit
any balance of cash on hand to me when
opportunity offers.

Wishing you success - and good health
to you and yours
Sincerely
Chas. A. Wetmore

Legal.

Leve

Notice is
ship sent to
Whaley and
manuscript of
collected by
Nittun
Aug. 1890.

(2) 3+

48 - 1/2

The San Diego Union

SAN DIEGO, CAL.

922-5.



Frank Whaley

THE SAN DIEGO UNION IS THE BEST ADVERTISING MEDIUM, BECAUSE IT HAS THE LARGEST CIRCULATION OF ANY DAILY PAPER IN SOUTHERN CALIFORNIA.

BECAUSE IT IS THE ONLY MORNING DAILY PUBLISHED IN A TERRITORY LARGER THAN THE COMBINED

City

STATES OF MASSACHUSETTS, CONNECTICUT, NEW JERSEY, DELAWARE AND RHODE ISLAND.

Personal.

BECAUSE ITS RATES ARE MUCH THE LOWEST IN PROPORTION TO CIRCULATION.

NOTICE.

SAN DIEGO, CAL., January 10th, 1890.

At a meeting of the Board of Directors of the San Diego Building and Loan Association, held December 30th, 1889, a resolution was passed, calling for a special meeting of the Stockholders, to be held at the office of the Association, in the City of San Diego, on Monday, April 14th, 1890, at 4 o'clock P. M., for the purpose of considering and acting on a proposition to increase the Capital Stock of this Corporation from \$500,000 to \$1,000,000.

GEO. B. HENSLEY,

President.

THEO. FINTZELBERG,

Secretary.

Office, No. 759 Sixth Street, Express Block.

as he agreed to do I am not going
to do. If from the sale of the fine-
silver ware worth and
amounts in pay over \$150,
I want to keep the
balance of the hundred
dollars in my possession.

He paid me 100 dollars
by check the balance of \$150, I
have been from account, but
if the Government would be
paid balance of sale of fine-
silver ware, I would get the
balance amount for the pro-
cess of the Government with
creditor but ^{not} to pay a balance
being understood in case.

23
24
25
26
27
28
29
30
31
32
33
34
35
36
37
38
39
40
41
42
43
44
45
46
47
48
49
50
51
52
53
54
55
56
57
58
59
60
61
62
63
64
65
66
67
68
69
70
71
72
73
74
75
76
77
78
79
80
81
82
83
84
85
86
87
88
89
90
91
92
93
94
95
96
97
98
99
100
101
102
103
104
105
106
107
108
109
110
111
112
113
114
115
116
117
118
119
120
121
122
123
124
125
126
127
128
129
130
131
132
133
134
135
136
137
138
139
140
141
142
143
144
145
146
147
148
149
150
151
152
153
154
155
156
157
158
159
160
161
162
163
164
165
166
167
168
169
170
171
172
173
174
175
176
177
178
179
180
181
182
183
184
185
186
187
188
189
190
191
192
193
194
195
196
197
198
199
200
201
202
203
204
205
206
207
208
209
210
211
212
213
214
215
216
217
218
219
220
221
222
223
224
225
226
227
228
229
230
231
232
233
234
235
236
237
238
239
240
241
242
243
244
245
246
247
248
249
250
251
252
253
254
255
256
257
258
259
260
261
262
263
264
265
266
267
268
269
270
271
272
273
274
275
276
277
278
279
280
281
282
283
284
285
286
287
288
289
290
291
292
293
294
295
296
297
298
299
300
301
302
303
304
305
306
307
308
309
310
311
312
313
314
315
316
317
318
319
320
321
322
323
324
325
326
327
328
329
330
331
332
333
334
335
336
337
338
339
340
341
342
343
344
345
346
347
348
349
350
351
352
353
354
355
356
357
358
359
360
361
362
363
364
365
366
367
368
369
370
371
372
373
374
375
376
377
378
379
380
381
382
383
384
385
386
387
388
389
390
391
392
393
394
395
396
397
398
399
400
401
402
403
404
405
406
407
408
409
410
411
412
413
414
415
416
417
418
419
420
421
422
423
424
425
426
427
428
429
430
431
432
433
434
435
436
437
438
439
440
441
442
443
444
445
446
447
448
449
450
451
452
453
454
455
456
457
458
459
460
461
462
463
464
465
466
467
468
469
470
471
472
473
474
475
476
477
478
479
480
481
482
483
484
485
486
487
488
489
490
491
492
493
494
495
496
497
498
499
500
501
502
503
504
505
506
507
508
509
510
511
512
513
514
515
516
517
518
519
520
521
522
523
524
525
526
527
528
529
530
531
532
533
534
535
536
537
538
539
540
541
542
543
544
545
546
547
548
549
550
551
552
553
554
555
556
557
558
559
560
561
562
563
564
565
566
567
568
569
570
571
572
573
574
575
576
577
578
579
580
581
582
583
584
585
586
587
588
589
590
591
592
593
594
595
596
597
598
599
600
601
602
603
604
605
606
607
608
609
610
611
612
613
614
615
616
617
618
619
620
621
622
623
624
625
626
627
628
629
630
631
632
633
634
635
636
637
638
639
640
641
642
643
644
645
646
647
648
649
650
651
652
653
654
655
656
657
658
659
660
661
662
663
664
665
666
667
668
669
670
671
672
673
674
675
676
677
678
679
680
681
682
683
684
685
686
687
688
689
690
691
692
693
694
695
696
697
698
699
700
701
702
703
704
705
706
707
708
709
710
711
712
713
714
715
716
717
718
719
720
721
722
723
724
725
726
727
728
729
730
731
732
733
734
735
736
737
738
739
740
741
742
743
744
745
746
747
748
749
750
751
752
753
754
755
756
757
758
759
760
761
762
763
764
765
766
767
768
769
770
771
772
773
774
775
776
777
778
779
780
781
782
783
784
785
786
787
788
789
790
791
792
793
794
795
796
797
798
799
800
801
802
803
804
805
806
807
808
809
810
811
812
813
814
815
816
817
818
819
820
821
822
823
824
825
826
827
828
829
830
831
832
833
834
835
836
837
838
839
840
841
842
843
844
845
846
847
848
849
850
851
852
853
854
855
856
857
858
859
860
861
862
863
864
865
866
867
868
869
870
871
872
873
874
875
876
877
878
879
880
881
882
883
884
885
886
887
888
889
890
891
892
893
894
895
896
897
898
899
900
901
902
903
904
905
906
907
908
909
910
911
912
913
914
915
916
917
918
919
920
921
922
923
924
925
926
927
928
929
930
931
932
933
934
935
936
937
938
939
940
941
942
943
944
945
946
947
948
949
950
951
952
953
954
955
956
957
958
959
960
961
962
963
964
965
966
967
968
969
970
971
972
973
974
975
976
977
978
979
980
981
982
983
984
985
986
987
988
989
990
991
992
993
994
995
996
997
998
999
1000

Pd San Diego Jan 7/90 from ^{J. N. Whaley}
(Monmond) Che Hundred Thirty Eight
117100 dollars to pay taxes agreeable to entry
this day upon our books E. M. Morse

138 1/2

Shaw

Transactions of Whaley & Mann and sister
 commencing Dec. 31, 1889, ^{as per to be} Order of prior drawing
 been closed - by Prot. W. & M.

Whaley's transactions.

Dec. 31 -	Cast rec'd from M. D. Lewis,	Debit	27.51	X
"	" " " (draft) Geo. B. Meritt	Debit	40.86	✓
Jan 1 - 90 -	" " " W. H. Curtis	Credit	7.05	X
Jan 3 - 90 -	" " " C. A. Chaudelain		7.05	X
Jan 4 - 90 -	" " " dupl. C. A. Wright		55.96	✓

Transferred over to E. H. Jones to be applied to - 13843
 drawing, latter for some entries as per as well as.

Mr. R. Monand to give up office &
pay rent. To turn over cash on hand
\$ 250⁰⁰. To turn over Post Office key
to Frank Whaley & not to collect or
receive any money. To pay to Frank
\$ 750⁰⁰ cash. To give bill of
sale of everything in his present
residence except wearing apparel
& to turn the same over to Thomas
Whaley. Cash on hand and any
that may be received ^{from collections} to go to pay
outstanding indebtedness of the
firm of Whaley & Monand, except
the note of \$ 660⁰⁰ which shall
be extended for 1 year, according
to statement rendered by Mr Monand
to Thos Whaley.

deposition taken Aug 4, 1890

CITY. STATE & COUNTY. SCHOOL.

AMOUNT OF TAXES.

According to the Assessment Roll, City, County and State, and

18. ... Stationary Barn, San Diego

Exclusive Control of Valuable Properties, Rents Collected and Taxes Paid for Non-Residents

ALERS, City

1427 ...
 Call ...
 2017/11/11

Ask Eaton if his home is in Oregon, or Government land or in same state?

this copy.)

Dissolution Notice.

Be it given that the co-partnership
now existing between Francis H.
Whaley & R. M. Murrell, under the firm
Whaley & Murrell, is this day dis-
solved by mutual consent
as our hands this 4th day of Jan^r.

Francis H. Whaley.

R. M. Murrell

Pld 7.00

R. M. Murrell

San Diego Jan 5th 1890.

F. H. Whaley Esq.

Dear Sir:-

I find after leaving you this evening that it is impossible for me to wait over another day just at present, so it will be impossible for me to meet you at Mr. Babcock's office tomorrow morning, as I expected to when I left you this evening. So after you have talked the matter over with Mr. Babcock, I wish you would write me to Los Angeles, 16 Court St. and let me know what you are going to do about ~~my~~ ^{our} claim of \$71.94 against the firm of Whaley and Monard. Also please let me know if your father will endorse a note for the amount, if I will give you time. Please answer at once. I will wait a few days before I write anything to my lawyer here. I have told him to do nothing until he heard from me, hoping that some kind of a settlement, can be made.

Truly yours. C. W. Gates

Consolidated National Bank,

412 WEST 10TH, TENTH AND G STREETS

SAN DIEGO, CALIF.

Mrs. Ann M. Kelly

DEAR SIR:

We beg to call your attention to payments due at this bank as follows—

Interest on your note to *1000*
due *Nov 1* amounting to \$ *30.00*

Respectfully Yours,

also \$635 on \$1000 note 1 mo
with 1000 30/90 to the bank.
L. H. BARBOUR, Cashier

IF NOT DELIVERED IN THE MANNER SET FORTH TO
CONSOLIDATED NAT'L BANK,
S. W. CORNER 5TH & G STREETS,
SAN DIEGO, CAL.

*Bank notice
1000*



Mrs Ann M Kelly

City

San Diego, Cal. Oct 1 1890

Mr. Whaley



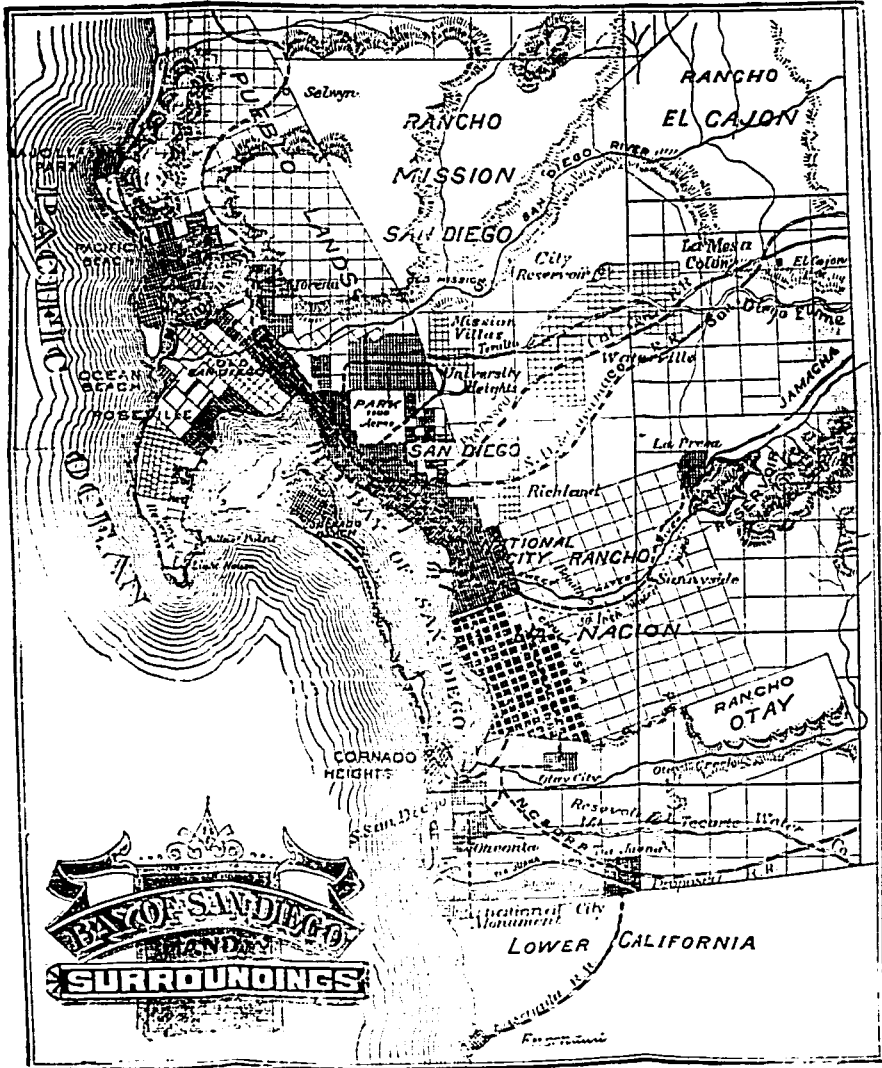
→ To A. LEVI, Dr. ←
Occident Livery, Hack & Sale Stables.
SIXTH AND H STREETS.

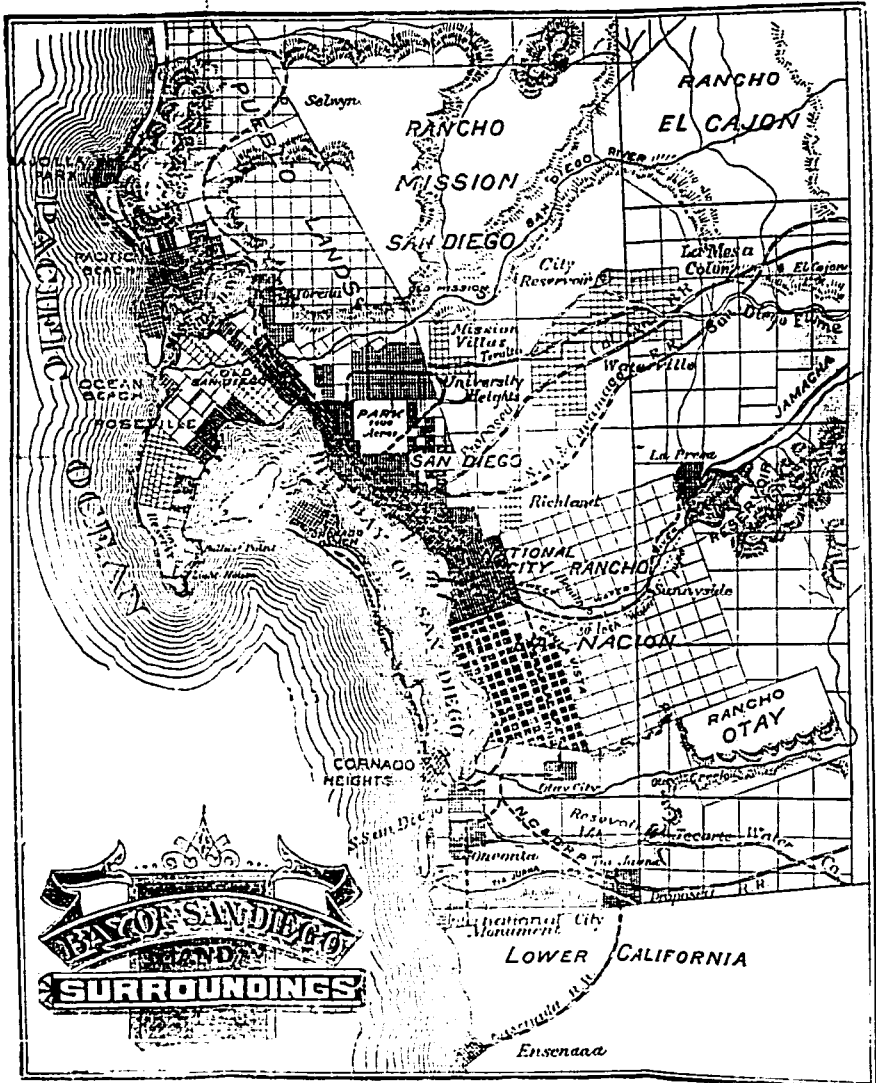
TELEPHONE 118.

Sept 19 To Busse Hire

02.17/20. Paid
A Levi
per Merrill

50x





BAY OF SAN DIEGO
AND
SURROUNDINGS

LOWER CALIFORNIA

Ensenada

Rents Collected.

P O. BOX 323.

Taxes Paid.

J. A. Skimerda,

Real Estate.

OFFICE D ST., HORTON HOUSE BLOCK.

San Diego, Cal. March 7 1890.

Mr Whaley
City
Dear Sir.

As receipt of this letter please
call at my office on business
we had some conversation about a
few days ago.

Yours Truly

J. A. Skimerda

Office of the

Commercial Printing Company.

940 D Street, near Court House.

Best • Equipped • Steam • Book • and • Job • Office • in • the • City.

Contracts for Newspaper Printing Entered Into.

San Diego, Cal., July 30, 1890.

In consideration of Thomas Whaley having this 30th day of July, ¹⁸⁹⁰ conveyed by Grant Deed to my wife, Frances E. Daggett, Lots 3 & 4 in Block 97, Morse's Addition, for the sum of Three Hundred Dollars (\$300⁰⁰) and delivered the same to me, I hereby agree to sell and deliver to him upon his order, such goods from my drug store as I have for sale ^{at regular price} to the amount of \$300⁰⁰ (Three Hundred Dollars) without any further charge, and in case I should quit the drug business, or from any cause be unable to deliver the goods as above specified, I agree to refund the balance that may then be due upon this contract. Signed in duplicate.

(See Pass Book in eye with H.W.)

Henry Daggett
H.W. Whaley.

P. J. Skilwell

Permission is hereby given
to you to sub let the printing plant & or
any portion thereof now at No 940 10th
St. (C. Best Bygones) the agreement thereon
to be made strictly in accordance
with the agreement made the 25th day of
September 1890 between you & F. H. Wood
provided the rent therefor (62.5 per week)
be paid to me by said (C. Best Bygones)
to be applied toward your rent on
said printing plant and that said Bygones
shall have no right to sub let or assign
to any one else.

Witness my hand
at San Diego

September 7th

1890

J. H. Wood

C. J. Stilwell
 Permission is hereby given
 to you to sub let the printing plant or
 any portion thereof now at No 940 10th
 to A. Bert Byron. The agreement therefor
 to be made strictly in accordance
 with the agreement made the 8th day of
 September - 1890 between you + F. H. W. Hall
 provided the rent therefor (6.25 per week)
 be paid to me by said A. Bert Byron
 to be applied toward your rent of
 said printing plant, and that said Byron
 shall have no right to sub let or assign
 to any one else.

Signed F. H. W. Hall
 Witness
 H. H. W. Hall

San Diego September 9th
 1890

July 30th 1890

Received from F. H. Whaley
\$2²⁵ in full settlement of a/c to date
Pacific Wood & Coal Co
for J. J. Kuman

Office of the

Commercial Printing Company.

940 D Street, near Court House.

Best • Equipped • Steam • Book • and • Job • Office • in • the • City.

Contracts for Newspaper Printing Entered Into.

San Diego, Cal.,

July 30th 1890
Whaley

Received from F. J. Whaley
\$2²⁵ in full settlement of
"a c against City Printing
Co to date"

Pacific Wood Trval Co
for J. Helkeman

over

189

THOMAS WHALEY, Proprietor.

FRANCIS H. WHALEY, Manager.

Office of the

Commercial Printing Company.

940 D Street, near Court House.

Best • Equipped • Steam • Book • and • Job • Office • in • the • City.

Contracts for Newspaper Printing Entered Into.

San Diego, Cal., July 5th 1890.

To C. A. Harris, Foreman, City Printing Co.

Demand is this day made upon you for any and all printing material etc, you may have in your possession in the office of the City Printing Co, of which office you are foreman, belonging to Thomas Whaley, and now being unlawfully withheld from the said Thomas Whaley. This demand is made for the immediate return thereof to its rightful owner, this saving costs and honor in this matter. Attached hereto is an approximate of material, etc, belonging to Thos. Whaley, and for Francis H. Whaley, Agent, made a part of this demand.

Thomas Whaley

for Francis H. Whaley, Agent.

M. S. Babcock
City Foreman

Office of the

Commercial Printing Company.

940 D Street, near Court House.

Best • Equipped • Steam • Book • and • Job • Office • in • the • City.

Contracts for Newspaper Printing Entered Into.

San Diego, Cal.,

189

1 Red wood table. Material in Guide form, including, all leads, slugs, rules, chase, side-sluts and foot sluts, and type not stereotyped.

Also, about 25-lbs of 13-lin leads, slugs, etc. Also 47 13-lin ad. rules; 28 double cross rules; 12 parallel rules; 15 editorial dashes; 17 local dashes; also standing matter in "Reviews"; including 2 parallel ^{lead} rules.

2 - Foot. Bands in drawer of desk, and ^{etc} rules.

1 screw driver.

1 oil can

And any other material not enumerated
See Memo to belong to Tho. Whaley.

THOMAS WHALEY, Proprietor.

FRANCIS H. WHALEY, Manager.

Office of the

Commercial Printing Company.

940 D Street, near Court House.

Best Equipped Steam Book and Job Office in the City.

Contracts for Newspaper Printing Entered Into.

San Diego, Cal., July 5th 1890.

To Mrs. M. J. Briedsall, of City Printing Co,

Demands is this day made upon you for any and all printing materials, etc., you may have, belonging to Thomas Whaley, and now being unlawfully withheld from the said Thomas Whaley, by you, the said material now being located in your office (City Printing Co) No. 1134 D Street, San Diego, Cal. This demand, for the immediate return of said material to its rightful owner, is made to save you costs and trouble in this matter.

Witness my hand and seal this 5th day of July, 1890.

Thomas Whaley,
Francis H. Whaley, his agent.

of material belonging per
to Thomas Whaley, and made
part of this demand

W. A. Ruben
Attorney for claimant

Office of the

Commercial Printing Company.

940 D Street, near Court House.

Best • Equipped • Steam • Book • and • Job • Office • in • the • City.

Contracts for Newspaper Printing Entered into.

San Diego, Cal.,

189

1 workwood table.

Material in Guide form, including all leads, slugs and rules, chase, galleys and foot-sticks, and type not thus typed.

Also about 25 lbs of 13-em leads, slugs, etc., also 47 13-em ad. rules; 28 double cross-rules; 12 parallel rules; 15 editorial dashes; 17 local dashes;

Also standing matter in "Review", ^{paper} set

2 lead rules;

2 short-rands in drawer of desk, ^{rules, etc.} and

1 screw driver.

1 oil can.

And any other material not here enumerated, known to belong to Thos. Whaley.

Original

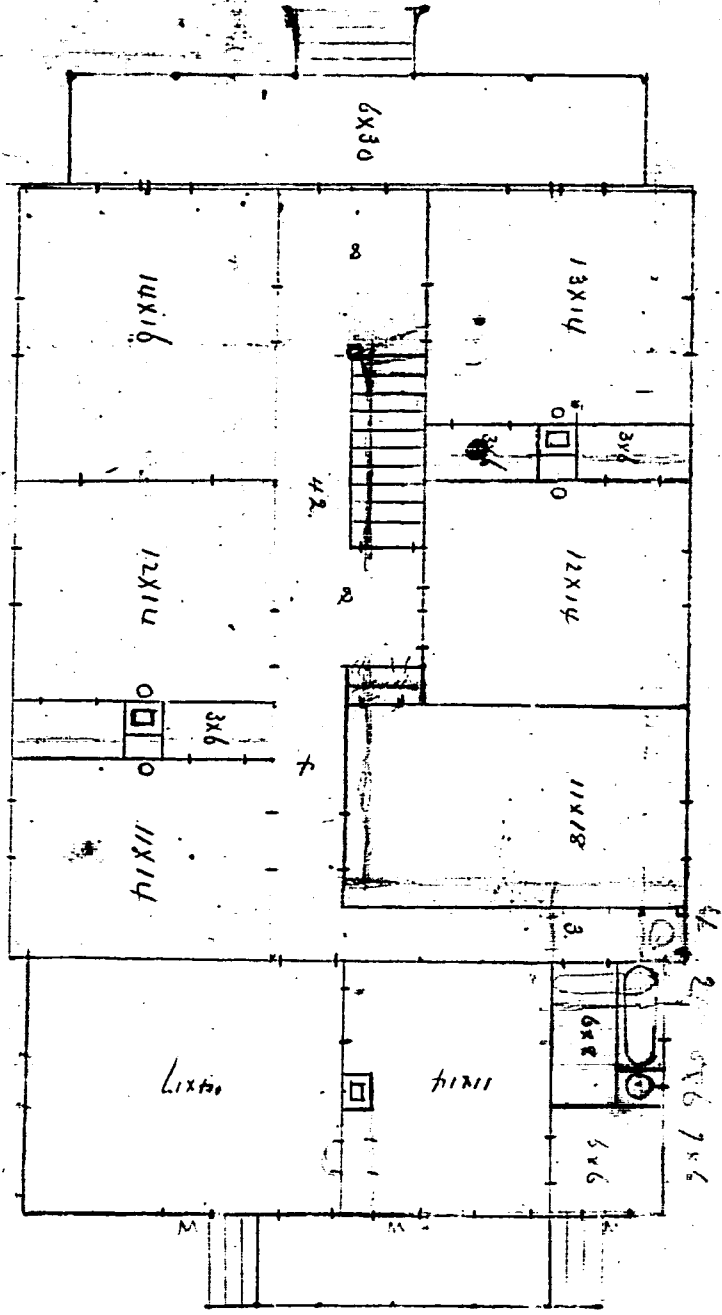
Thomas Whaley

209.

Mrs. M. J. Bidsell

Demond.

Sealed July 3rd, 1890



6x30

13x14

14x16

12x14

12x14

11x18

11x14

16x17

11x14

6x8

5x6

4.2

4

4.2 2. 0x6 7x6

M

M

San Diego Chamber of Commerce.

San Diego, Cal. *July 11th* 189*6*

Mr. J. H. Whaley

SIR:

According to the books your account stands as follows:

Dues for January	\$
" February	
" March	
" April	
" May	
" June	
" July	
" August	
" September	
" October	
" November	
" December	

*Share discontinued
Dues since July 1896
The New Society*

\$

Dues are \$1.00 per month; \$5.00 for six months in advance, \$10.00 for twelve months in advance.

Very respectfully,

THEO. FINTZELBERG

Financial Agent.

NO. 789 SIXTH STREET.
(Express Block.)

Received on account of the within
contract One Hundred Dollars,
for professional services to date,
July 10th. 1890.

J. P. Davis

Contract with Dr. J. N. Davis
for \$500. to be taken out of
professional services,
July 10th 1890.

RESIDENCE, COR. FRONT AND FIR.

July 10th 1890 Deed No. 38 x 39-97 n/a

To Nell E. Doig, wife of

Dr. J. R. Doig

Consent of \$500. Professional
Physician and Surgeon

Services rendered to the undersd.

200
1.00 Rendevu
2.00 Calm

OFFICE

COR. FIFTH AND C STS.

Diego, California,

July 10th 1890.

son of Thomas Whaley

10th day of July, 1890,

Grant deed to my wife,

Nell E. Doig, Lots 38 and 39 in Block
97 Moore's Addition, for the sum
of \$300⁰⁰. I hereby agree to render
to him and his family, my pro-
fessional services at his house or
at my office at regular rates until
such time as such services shall
amount to said sum of \$300⁰⁰ without
any further charge, and in case I
should leave San Diego, or from any
cause, be unable to render said
professional services, I agree to
refund to said Thomas Whaley, the
balance due upon this contract.

J. R. Doig

(over seal)

San Diego, California,

July 10th, 1890.

In consideration of Thomas Whaley, having, this 10th day of July, 1890, conveyed by Grant Deed to my wife, Nell E. Doig, Lots 38 and 39 in Block 97 Moore's Addition, for the sum of \$300⁰⁰. I hereby agree to render to him and his family, my professional services at his house or at my office at regular rates until such time as such services shall amount to said sum of \$300⁰⁰ without any further charge, and in case I should leave San Diego, or from any cause, be unable to render said professional services, I agree to refund to said Thomas Whaley, the balance due upon this contract.

J. R. Doig

(over 300⁰⁰.)

RESIDENCE, COR. FRONT AND FIFTH.
July 10/90 Deed Lots 38 & 39-97 m/a
to Nell E. Doig, wife of
Dr. J. R. Doig
Consideration \$300. Professional
Services rendered & to be rendered.
200
100 Balance
COR. FIFTH AND C STS.

San Diego, Cal., June 31 1890.

Phas. Trauer

In account with **San Diego Gas and Electric Light Co.**

Office: 935 SIXTH STREET, BET. D AND E.

63 1/2" gas	3.25	3-1/2" gas	5.5	13.60	
3-1/2" electric	15	3-1/2" electric	20	4.5	
1 x 3/4" - 15		2-1/2" gas	3.0	3.0	
1 3/8" union	15	the same	3.0	3.15	7.55
<p><i>Paid</i> <i>Oct 10 1890</i></p>					

San Diego, Cal., July 31, 1890.

Wm. Whaley

In account with San Diego Gas and Electric Light Co.

Office: 935 SIXTH STREET, BET. D AND E.

19th July

63' - 1/2 pipe	3.10	- .46	13.60
3 1/2 pipe		- .30	- .45
1 1 x 3/4 pipe		- .20	- .35
1 3/4 pipe		60	3 15 Pd 7.55
1 Chicago, pipe			15 =
			25.55
			16.50
			9.05
			7.55
			1.50

Stove Returned \$18.00 Less used 1/2 mo \$1.50
 Due Co,
 Oct 10/90
 Bal to be adjusted.

San Diego, Cal. July 24th 1890

No Whaley



Bought of

GEO. H. MATFIELD.

THE LEWIS COMPANY

IMPORTERS AND JOBBERS IN

WINE, LIQUORS

SOLE AGENTS.

KRONTHAL NATURAL MINERAL
WASSAU WATER GERMANY

TERMS CASH

25 & 27 FREMONT ST.
SAN FRANCISCO.

1321 & 1323 E ST.
SAN DIEGO.

We do not insure delivery or safe carriage of goods. They are at your risk after shipment from our store.

3 doz Postier
1 doz Brandy

7 50
3 00
\$ 10 50

Recd Paid
Geo. H. Matfield



© HORSE SHOEING ©

PARTICULAR ATTENTION PAID TO
DISEASES OF FEET & PECULIARITIES OF GAIT

San Diego, Cal.,

July 1, 1890

Mr. Whaley

To O. WHITMORE, Dr.

PROPRIETOR OF

GENTRAL CARRIAGE SHOP

Carriage and Wagon Making and Repairing Neatly Executed.

828 & 830 FOURTH ST. . . . BET. E AND F STS.

June 7	To Horse	4.00	2.00	
10	.. Set Tire		2.00	
	.. Repairs		1.00	
				5.00

July 24 1890
Paid
O. Whitmore

J. S. SCHILLER.
P. D. MURTHA.

SAN DIEGO, CAL., *Sept.* 1890.

Mr. Thos. Whaley

Bought of **SCHILLER & MURTHA,**

— IMPORTERS OF —

Dry Goods, Clothing, Ladies' and Gents' Furnishing Goods, Hats, &c.

Accounts payable on the
first of each month

CORNER FIFTH AND H STREETS.

TERMS

		GOLD, HUTTON & CO. PRINTERS.		
<i>Apr 21</i>	<i>3 Vests</i>	<i>1.25</i>	<i>3 75</i>	
<i>June 28</i>	<i>1 Over Coat</i>		<i>17 50</i>	
<i>Aug 16</i>	<i>3 Pies</i>	<i>.50</i>	<i>1 50</i>	
<i>19</i>	<i>6 3/4 l'ds Goods</i>	<i>.40</i>	<i>2 70</i>	
<i>23</i>	<i>11 " Persian Mull</i>	<i>.15</i>	<i>1 65</i>	
<i>29</i>	<i>4 1/2 " Velvet Ribbon</i>	<i>.15</i>	<i>68</i>	<i>27 78</i>
	<i>Cr.</i>			
<i>July 7</i>	<i>1 Over Coat Returned</i>		<i>17 50</i>	
	<i>1 Hat " (was paid)</i>		<i>1 50</i>	<i>19 00</i>
				<i>8 78</i>

Recorder's Form

11, 12, 13, 14 - 54
35, 36 - 62, 70 - } No. 1000 Act.
45, 46, 5, 6 - 55.

Grant Deed.

O. M. Morse
-to-
Thomas Mahaley

Dated January 23 1890

Received for record
1890, at 5 min. past 12
o'clock P.M. at request of
Jas. Miller

and Recorded in Book 159 of Deeds
page 299 et seq. 2/11
1890, at 9 o'clock and 20 min.
A.M.

E. J. Knight
County Recorder.

By A. P. Johnson
Deputy.

STEPHENS & PACKARD,
Booksellers and Stationers,
San Diego, California

1041

State of California,

County of San Diego,

} ss.

On this 24th day of January in the year one thousand
eight hundred and ~~eighty~~ ninety before me T. J. Wrangelman
a Notary Public in and for said County, residing therein, duly commissioned and sworn
personally appeared

E. W. Morse,

known to me to be the person whose name is subscribed to the within instrument,
and he acknowledged to me that he executed the same.

In Witness Whereof, I have hereunto set my hand and affixed my official
seal _____ at my office in said County
of San Diego, State of California, the day and year in this certificate
first above written.

T. J. Wrangelman,
Notary Public.

St. Louis, Mo. May 6, 1890

been wholly about a month since a man
called upon me with one of your business
cases, and mentioned that he was the person
thereon mentioned I of course received him
& was polite to him, as a future visitor
pursued papers of some I'd understand
in which he thought I would probably
be interested but I assured him I had no
time of reading in any affair of that
or any other kind, further out he said
he had prospects of a situation in a large
grocery house & wanted my endorsement
which I likewise declining as he had not
brought any introduction from you or any
of my San Diego friends, since then have
not seen anything of him he would well
be acquainted in S. D. and of the people
there. Perhaps it was all right but
I had nothing to go upon. He said the
thing had dissolved, but some one would
take up the affair of the old one. If you
have passed things over to some one else
I wish you would include our matter
& advise me to whom, as that my
communist writes The Herald at some
time will come out no doubt but again
looking after. I subscribed to the Sun though
you but have never rec'd a paper (you
from Wash. D.C. Yrs sincerely
John R. Bleeker

Dissolution Notice.

Notice is hereby given that the partnership heretofore existing between Francis H. Whaley and R. Momand, under the firm name of Whaley & Momand, is this day dissolved by mutual consent.
Witness our hands this 4th day of January, 1890.
FRANCIS H. WHALEY.
R. MOMAND.

March 3 1888
Partnership of
dissolving
of F. H. & R. Momand
Jan 10, 1890

RESORT
ON THE AMERICAN CONTINENT.
Mammoth Wave-Worn Caves—Beautiful
Ocean Goldfish Glazing in the Waters
the Base of the Cliff—In the Distance II
Whales Gambol in the Mighty Deep.
Climate—a Perpetual Summer
Pure Mountain Water—A Complete System
Of Sewerage—Easily Accessible by
Romantic Road from

1890

		Forward	125966	96620
Sept	11	Gas for Aug		50
	12	M ^r . A. Deuce Com ^o Hatfield rent		5
	25	S. D. Water Co Aug 15 to Sept 15		2
	30	J. W. Stewart Sept. salary		20
Oct	10	Gas for Sept		50
	14	A. H. Dalton expense to see Frinckton		10
	28	S. D. Water Co to Oct 15		55
		S. D. Coal Co to Oct 31 st	1250	
	31	Geo. J. Shields salary for Oct		1550
		J. W. Stewart - - -		20
		Balance on hand		230.91
			127216	127216
Nov 1/90 check ^{\$100} to J. W. Stewart, Treasurer for wages Aug 1/90 till (8600) dec Phillips Nov 1/90.				

Chillicothe Co. to bank
to pay the \$30.00

July 1st 1892

600
236
370
723

To Cash

Balance forward 750.

By Cash on hand 40

By Cash on hand 100

By Cash on hand 100

By Cash on hand 100

By Cash on hand 100

By Cash on hand 100

By Cash on hand 100

By Cash on hand 100

By Cash on hand 100

By Cash on hand 100

By Cash on hand 100

July 1st

Chillicothe Co.

Democratic Club \$10.

St. Michael's 30.

July 1st - 1892

May 15 1890
C.P. 1654
No

SUPERIOR COURT,

OF THE

County of San Diego,

Department No. 2.

In the Matter of the Estate

of ^{James W. Robinson} deceased
JAMES W. ROBINSON,
deceased

James W. Robinson
To H. Richardson

COPY OF NOTICE TO SHOW CAUSE.

To appear
August 15th 1890.
for 10:00 am
for 10:00 am
for 10:00 am

GEORGE W. HARDACRE and
DAVID L. WITHINGTON,
Attorneys for Petitioner

JOSEPH RODES, M. D.,
PHYSICIAN AND SURGEON,
OFFICE, S.W. COR. SIXTH & D STS.
804 TOR BLDG.
RESIDENCE, FIFTH STREET, ABOVE SPRUCE.

OFFICE HOURS: { 10 TO 12 A.M.
 { 2 TO 8 P.M.
 { 7 TO 8 P.M.
SUNDAYS: 9 TO 11 A.M.

San Diego, Cal., Feb. 4th 1890.

Messrs. Whaley and Monand,
no. 922 Fifth Street,
San Diego, Cal.,

Dear Sirs,

What is your lowest cash price for that piece of land (100 x 100 I think) at the corner of Fifth and Date Streets. I mean the piece that stands quite high up from the road.

Have you any other corner lots (or 100 foot pieces) on Fifth Street, either north-east or north-west corners, suitable for a residence. If so please mention them, with cash price.

Yours very truly,
Joseph Rodas

JOHNSTONE JONES.

JAMES E. WADHAM.

Jones & Wadham,

LAW OFFICE,

ENTRANCE ROOM 10, FIRST NATIONAL BANK BUILDING.

In re *Chase*
vs.
Whaley

Thomas Whaley, Esq.

933 State street, City.

San Diego, Cal.,

May 29th, 1890.

Dear Sir:-

We hand you herewith, note for \$ 97.95 payable to the order of C. A. Chase, 60 days hence. Mr. Chase has examined ~~his~~ his books and finds that the amount is correct. He agrees to the extension of time as stated in the note provided the same is signed and returned to us immediately. If we do not receive the note signed by you ~~over~~ before June 1st. we conclude that you do not assent to its terms, and will take our steps accordingly.

Very truly yours,

(dictated by General Jones .)

Jones & Wadham

May 31/90. Give note to day for \$92.45/100 at 1% per cent for Free Bank this date.

JOHNSTONE JONES.

JAMES E. WADHAM.

Jones & Wadham,

LAW OFFICE,

ENTRANCE ROOM 10, FIRST NATIONAL BANK BUILDING.

In re

Chase

vs
Whaley

San Diego, Cal., May 21st 1890

Thomas Whaley, Esq

Sir -

Some few days since, we
addressed you concerning a claim
of Mr C. A. Chase against you, for
the sum of \$97.⁵⁰. We have heard
nothing from you and now notify
you that if you do not attend to
the settlement of this matter by Monday
the 26th instant, we shall commence
suit for the recovery of the same

Very Truly Yours
James E. Wadham

Jones & Wadham,

LAW OFFICE,

ENTRANCE ROOM 10, FIRST NATIONAL BANK BUILDING.

In re *Chas A Chase*

vs.

Thomas Whaley

San Diego, Cal. Nov 14th 1890

Thomas Whaley
855 State St. City

Mr Chas A Chase has placed in our hands for collection a claim against you for the sum of \$97.48 for goods sold and delivered. As this is overdue (most of it for a very long period) will you please call at our office as soon as possible and attend to the settlement of it.

Very Truly Yours,

Jones & Wadham

10 12

[Faint, illegible handwritten notes and signatures at the bottom of the page.]

May 19/90 Saw Chase, his clerk
propose to pay him my bill 97.95 and
I deed to him —

May 21/90 Saw Washburn says it is not paid by Monday
May 25th Chase returned to Commerce Court.

Bill Paid	97.95
Deduct 10.00	10.00
	<hr/>
	87.95

May 26/90 offered my note for \$87.40
pay in 60 days. Washburn said he would
submit offer to Chase and let me know.

May 27/90 Recd. letter from Washburn
enclosing note for \$87.40 to be paid
and return before June 1/90

May 31/90 — gave Chase my note for \$92.40
payable in sixty days at one per cent
per month & 25% penalty in case
of suit

W. Washburn

In Re

Dalton
vs.
Monard

Officers of
Shaw & Holland,
Attorneys at Law,
Rooms 4, 5 & 6,
Consolidated Natl. Bank Bldg

San Diego, Cal. May 26th 1908

Friend Dalton

Mr Whaley wants a
release or an assignment of the
Judgment in the above entitled
case. You are safe in giving him
either,

J. Hunt

or have property released that I may wish to
mitige or sell. Will suit. Attorney vs. Monard
is settled

to visit San Diego and there
would be no corresponding
advantage. If ever you
want one to take charge
of the pulling down it
can be done for 3000 a
year for an engineer who
wants also be city engineer
which would be good
for say 3 to 5 years.

Mr. Edmundo's seeds
regards. J

(AS ever)

J. Sedgwick

Albuquerque
March 17.

Friend Ballou,

I have to
thank you for a box
of very fine oranges
sent me which were
superb and tasted
very fine.

The box was damaged
some where but the fruit
was O.K.

Is it dark over your
in dark?

George goes out to day
to get out some things.
You will find him
at the J. W. D. house.

Say to Mr. Stearns that
it would be better to
pay for the oranges

D. K. DON,

Bookbinder and Blank Book Manufacturer.

ACCOUNT AND BLANK BOOKS MADE TO ORDER.

832 Fourth Street, Between E and F.

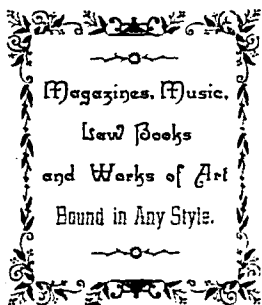
Post Office Box, 872.

San Diego, Calif.

188

Creditors

	Amount due	Amount pay	Paid	Amount balance	Amount paid	
Whaley & Co. deficit	1715 15		1715 15			
Schubert & Krutz	810 83		810 83			
Mrs. Dennis	84 50		84 50			
McCriskin F.	150 00		150 00			
Walker - life ins.	300 00	300 00		300 00		
Willis - fire ins.	100 00	100 00			100 00	
John Gray - note	100 00	100 00		100 00		
Chas. Fur. Co.	38 00	38 00			38 00	
Lyon Store	16 00	16 00		16 00		
McDowell	12 00	12 00			12 00	
Haney & Lyons	26 00		26 00			
Marsden	31 00		31 00			
Baker & Co.	25 00		25 00			
Murray	50 00	50 00		50 00		
Union	16 00		16 00	16 00		
Lodge & B. - F.	10 00	10 00			10 00	
Levi & W. F.	8 00	8 00			8 00	
Zinn F.	25 00	25 00		25 00		
Brown - labor	50 00	50 00		50 00		
Newman	37 00	37 00			37 00	
Incidental	10 00	10 00			10 00	
3624487560					28584845700	21500



D. K. DON,

Bookbinder and Blank Book Manufacturer.

ACCOUNT AND BLANK BOOKS MADE TO ORDER.

832 Fourth Street, Between E and F.

Post Office Box, 872.

San Diego, Calif. March 5, 1890

My dear wife:

I have received from you during the past two weeks two letters, all I have gotten from you for God knows how long. You must pardon me for not having written to you for over two weeks, for various reasons; two of which are that a great deal of my time has been taken up looking after Thomas' matters and another, "strict attention" to the new business I am now engaged in, and when nights roll around I go to bed one of the most tired mortals that can be in existence. But withal, darling, my whole heart, mind and soul is always centered in you. My mind seems to dwell upon nothing else and unless I can have you and the baby with me soon, I fear something desperate will happen to me. But with all I have gone through, and I let you you cannot imagine me. Sincerely,
D. K. Don

Copy

San Diego, Cal. 1890

It is hereby certified, that the survey of "Partitions within
 Middleboro partition lines" date Oct. 1, 1872,
 and recorded in Book 4, page 57 of Miscellaneous
 Records of San Diego County, Decrees and sets apart
 to Mary Kestler, to-wit: "On the West Grounds, the
 fractions of lots 6 & 7 in Block 17" and that Chas
 Poager is now the owner of said fractions less the
 West 25 feet of lot 6, which is in the right of Jas. C. L.

R. My return to the partition and Middleboro
 it will be seen that said fractions are about 100 feet for
 fraction lot 6 and 10 feet for fraction lot 7. And it is
 Certified that said parties were all ready to file copies
 in said Block 17 by said Survey & return, and that Chas
 Poager only acquired said fractions by his deed to said
 Mary Kestler.

Witness our hand this 10th day of 1890. J. H. A.

H. J. Christian Rec

by W. J. [unclear] by H. J. Christian
 Original with Decy 1 1890
 E. H. [unclear]

1890 Chas Poager & Co. Agents, under R. E. [unclear]
 and [unclear] Sub 6 Block 17 [unclear] [unclear]

1890 [unclear] [unclear] [unclear]
 acknowledged before W. Lindenfeld, Notary Public.
 was actually paid to [unclear] by [unclear] [unclear]
 in [unclear] [unclear] [unclear]
 [unclear] [unclear] [unclear]

Nov 18/90 seeing to the number 2 The Block 100 acres
located in the land from Chas. Decker to Maria Whalley
P. M. Decker has returned the deed to S. C. Keller to forward
to some friend in Los Angeles to procure from Prager and
Deed and then return to me in Reed's.

Wagon has Certificate of Title made by Christian, also
the Los Angeles Mechanics & Trust Co. with access.

In deed regarding what I have said. I have had exchange of
Nov 21/90 letter returned. deed to be done, property executed, and
said deed this day. Spent my 12th Dec 1890 17, 1890.

copy of book of title
Vol 6-17. S. C. Keller
Nov 18/90
see if any have been
in for a while
at Decker's

Nov. 1890
Mary C. Bell
made to her property

~~Table (continued)~~

Material in Guide as
marked on accompanying
paper:

25 pounds leads
and slugs

Advt rules

French dashes

Double Rules

Parallels See "Review" of later part of Manual,
all in that was omitted

standing matter

"Review" including
rules and dashes

2 Short Hauls

1 new dinner

1 file can.

~~Case~~, side, and foot notes
and queries in Guide
form.

Also newspaper who can
be found in ^{top} drawer of desk
in business office.

Jump clause, hanging at end
of Volving near front window.

~~Division~~

1 news stick.

~~///~~ F. H. Whaley

June 10. Day
✓ Mrs. Wm. Pittman 418 Second St.
✓ Mrs. Minna Heintz 218 ^{St. Howard} ~~St. Howard~~
" Chad ~~numbers~~ - ~~Medison~~
✓ S. E. Allen 562 Howard St.
✓ E. Wright & Dwyer 706 Market St.
✓ Mortimer G. Howe 179 ~~Market St.~~ ^{Market St.}

The said petition is brought to obtain a judgment of said Court, ascertaining and declaring the rights of all parties whereof Sarah R. Robinson is executrix and all interests therein and to whom distribution should be made, as will appear by reference to the petition on file herein. A description of the real estate whereof said deceased died seized or possessed, so far as known, the same lying and being within the Pueblo Lands of the City of San Diego, in said County of San Diego is as follows:

120
Lot 16 containing 172 acres and 6 rods of land, and the north half of lot 17 containing 73½ acres and three rods of land, adjoining the before mentioned lot No. 16, said lot 17 being divided by a straight line in the center, commencing at the water and running back toward the hills, both lying on the Bay of San Diego, between Old Town and the Playa as surveyed and indicated on the map of said city by Clayton and Hesse, C. E., in 1851, filed in office of Trustees of said city. Said lot 16 is known as lot 263 and lot 17 as lot 199 as per official maps of Charles H. Poole and of James Pascoe, both on file with the Recorder of said county. Block 58 at Old San Diego, and situated between and bounded by Clay and Juan streets, an I Gaines and I Scott streets, according to the map and survey made by Cave J. Coutts, of the U. S. Army, on file in office of the Trustees of said city. Also an undivided half of lots 2 and 3 in block 1, lots 2 and 3 in block 3, lots 2 and 3 in block 2, lots 1 and 2 block 11, lots 2 and 3 in block 21, lots 1, 2, 3 and 4 in block 23, lot 2 in block 52, lot 3 in block 60, situated at Old Town, according to survey made by Coutts, which are the same lots described in a deed from Louis Rose to James W. Robinson, dated January 10th, 1853, recorded in Book "E" page 306 and 307. The aforesaid blocks are also known on the official map of the Pueblo Lands of San Diego made by Charles H. Poole, Dept. Surveyor as follows to-wit: Block 58 as 379, block 1 as No. 433, block 3 as No. 404, block 2 as 436, block 11 as 429, block 21 as 423, block 23 as No. 399, block 52 as No. 365 and block 60 as No. 419. Also an undivided half of lot A in block 45, lot D in block 48, lot D in block 21, lot B in block 13, and an undivided sixteenth of lot D in block 6, lots 1 and D in block 6, lots 1, J and K in block 7, according to the map of New San Diego made by Thomas D. John and A. B. Gray, which said blocks are known and numbered upon the official map as follows, to-wit: Block 48 as No. 766, block 21 as No. 768, block 13 as No. 797, block 5 as No. 789, block 6 as No. 790 and block 7 as No. 791, being the same lots conveyed by Charles Lawton and Charlotte S. Lawton, his wife, to George R. Wasson and the said James W. Robinson, deceased, by deed dated October 4th, 1852, recorded in book D, page 182. Also block No. 12 as surveyed and laid down on the plat of said city by C. J. Coutts, and known as block No. 465 upon the official map and containing 100 varas square, at Old San Diego, being the same lot conveyed to the said James W. Robinson, deceased, by Louis Rose and William C. Farrell, Trustees of said city, deed dated July 25th, 1853, recorded in book D on page 323. Also lot No. 4, in the 40-acre range San Diego Bay, between Old Town and the Playa, containing 40 acres, lot No. 4 in the 20-acre range, containing 20 acres, adjoining the last mentioned lot, lot No. 5 in the 10-acre range, containing 10 acres, lot No. 10 in the 5-acre range, containing 5 acres, block No. 96 in the 100 vara range, adjoining the last mentioned lot, as surveyed and indicated on the map of the City of San Diego by Clayton and Hesse, in 1851 and filed in the office of the Trustees of said city, and numbered on said official map as follows, to-wit: Lot 4 in the 40-acre range as No. 232, lot 4 in the 20-acre range as No. 239, lot 5 in the 10-acre range as No. 317, No. 10 in the 5-acre range as No. 424, and block No. 96 as 374, being the same lots and premises conveyed by Louis Rose and William C. Farrell, Trustees to said James W. Robinson, deceased, deed dated July 25th, 1853, recorded in Book D, on page 325. Also lot No. 1, containing 160 acres in Mission Valley, and known as No. 1109 upon the official map of said City of San Diego. Also block No. 21, according to Cave J. Coutts' map, and known and numbered as block No. 428, according to the official map. Said blocks and lots being also numbered upon the map of James Pascoe, duly filed in the office of the Recorder of said county, with the same numbers as before set forth upon said map of Charles H. Poole.

And you are hereby notified that if you fail to appear and answer the said petition as above required, the Court will enter an order adjudging your default for not appearing as aforesaid as provided in said Section 1664 of the Code of Civil Procedure, and the petitioners will apply for the relief prayed for in the said petition.

This notice is issued pursuant to an order of The Honorable George Putebaugh, judge of said Superior Court, made and entered May 10th, A. D. 1890.

Witness my hand and the seal of the said Superior Court of the County of San Diego, State of California, this 12th day of May A. D. 1890.

[SEAL]

M. D. HAMILTON, Clerk.

20	10	McRae	
5	5	St. Overmier	El Cajon
10	10	C. C. Burgess	" "
5	5	H. C. Covert	" "
20	10	D. H. Ogden	" "
20	20	Levi Chase	City
20	20	H. P. McKoon	El Cajon
20	25	Marshall, Bliss & Johnston.	Blisses Ranch
20	25	C. W. Morse	Lakeside ls.
20	20	Mrs. Geo. A. Cowles	Florence Hotel
20	25	J. M. Merrill.	secretary El Cajon Valley Co. Pacer & Mearns
20	25	C. M. Johnson	President El Cajon Vineyard Co. Room 1 Bldg 124
5	5	D. M. Marshall.	secy and manager " " El Cajon
10	5	W. W. Stewart	City
5	5	D. B. McFadden	El Cajon
10	10	C. C. Scamman	City
5	5	J. O. W. Paine	"
5	5	Ed. Wiscott	"
5	5	W. A. Hber	"
5	5	Geo. H. Power	El Cajon
5	5	Wm Payne	
5	5	J. M. Hartley	
5	5	John Coates	
10	5	Herbert A. Chase	City
5	5	Wm O'Connell	
5	5	A. L. Maxwell	City Res. 520 4 st.
10	5	Fred St. Hamilton	City
10	5	Geo. C. Maxwell	"
5	5	H. J. Stern	El Cajon
5	5	Clayton C. Hill	" "
5	5	Miss L. Dands	
5	5	Yuther & Crosby	Boston Ranch El Cajon

House

5-	5-	D. G. Gordon	El Cajon
5-	5-	W. N. Mann	
5-	5-	Geo. C. Shepard	
5-	5-	Chas. P. Richards	
5-	5-	E. A. Morrison	" "
5-	5-	Wm. C. Auel	" "
5-	5-	J. J. Jenkins	
5-	5-	W. H. Reeves	" "
5-	5-	A. C. Cassidy	
5-	5-	J. T. Gordon	" "
5-	5-	J. P. R. Hall	" "
5-	5-	A. E. Harbaugh	
5-	5-	Mrs. H. R. Ellis	
5-	5-	M. S. Wheeler	City
5-	5-	C. J. McCune	
5-	5-	F. W. Boardman	El Cajon
10	25-	A. L. Knox	" "
20	25-	Capt. Knowles	" "
5-	5-	A. W. Gilbert	" "
165-	40	C. J. Pennell	" "
5-	5-	Wm. Hill	" "
10	16	B. P. Hill	" "
5-	5-	E. C. Pratt	
5-	5-	A. Vasburg	
5-	5-	James Martin	
		M. C. McCullough	
		S. W. Barnett	
		H. C. Cogswell	El Cajon

John Sloan
Gold dust

1872

1870

1872

Mass

Ch. West

San

Francisco

Jeff Blunt

San

San Diego, Cal., Oct. 20 1890.

Mr. Thos Whaley



A. KINDLER,

Plumbing, Gas and Steam Fitting,

Tin Roofing, Gutters and Spouting.

Galvanized Iron Tank and Pump Work.

741 SIXTH STREET, Between F and G.

To work on home plot, Old Town (3⁰⁰)
Gutters & Leakers to
Kitchen

Rec'd
A. Kindler

WHOLESALE and RETAIL

DEALERS IN
REDWOOD.

Oregon Pine,
SHINGLES.

Shakes, Lath, &c.

OFFICE OF THE

West Coast Lumber Co.

INCORPORATED.

OFFICE CORNER D AND INDIA STREETS.

Lands.

SAN DIEGO,
SAN BERNARDINO,
REDLANDS,
NATIONAL CITY,
NORTH ONTARIO,
PASADENA.

Geo. D. Gray, Pres., 10 California Street,
Wm. G. Murray, Sec., 1 San Francisco, Cal.,
J. H. Wislitz, General Manager, San Diego, Cal.

San Diego, Cal., Nov. 5th 1896

Messrs Whaley & Momand,

San Diego, Cal.

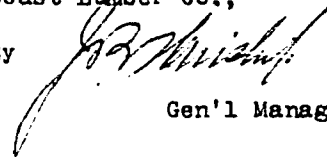
Gentlemen:-

We herewith enclose our statement of account against you, and would be pleased to have you remit, as the account is over one past due. We trust that you will give this request your prompt attention, and greatly oblige,

Respectfully,

West Coast Lumber Co.,

BY



Gen'l Manager.

Folio 651

STATEMENT

San Diego, Cal.

Nov 11 1875

Messrs. Whaley & Howard

In account with WEST COAST LUMBER CO.

Office Corner D and India Streets.

ONE PER CENT. PER MONTH WILL BE CHARGED ON ALL BILLS OVERDUE.

1875
Sept 1 No. Stat. Rend 566

WHALEY & MOMAND,

F. H. WHALEY
R. MOMAND

SUCCESSORS TO
MORSE WHALEY & DALTON

Established 1880

REAL ESTATE

DEALERS

AND GENERAL AGENTS.

MORTGAGES BOUGHT & SOLD.
CAPITAL INVESTED, LOANS NEGOTIATED.
PROPERTIES MANAGED, TAXES PAID.
RENTS COLLECTED, TITLES EXAMINED.
CONSTRUCTION OF BUILDINGS MANAGED.
PROPERTIES SUBDIVIDED & PUT ON THE MARKET.
LANDS BOUGHT, SOLD & EXCHANGED ON COMMISSION.
HEADQUARTERS
FOR SAN DIEGO COUNTY RANCH LAND

MORSE WHALEY & DALTON BLOCK,

San Diego, Calif.

Return to WEST COAST LUMBER CO.,
SAN DIEGO, Calif.
If not delivered within 10 days.



*Morse Whaley & Momand,
922 - 5th Street,
City.*

In my last ... ~~...~~
 getting ~~off~~ as a condition ... ground upon
 tract 82 La Mesa ... ^{concession of tract} ... of ~~...~~
 do and there are ^{as shown in the map} ~~...~~ said colony
 do as to ~~...~~ as well as the States ~~...~~
 with ⁹⁰ ~~...~~ and ~~...~~ and harvesting said tract 82, do hereby
~~...~~ ^{qual permission to} ~~...~~
~~...~~ ^{to such persons engaged in the} ~~...~~
 Indiana ... of San Diego ~~...~~ ^{...} tract 82
 tract 82 with grain or to ~~...~~ the ~~...~~ ^{...}
 produce ~~...~~ with ~~...~~ ~~...~~ ~~...~~
 and to ~~...~~ ~~...~~ and ~~...~~ ~~...~~
 said grain and ~~...~~ ~~...~~ ~~...~~
 and to apply in the ~~...~~ ~~...~~ and ~~...~~ ^{the 1st day}
~~...~~ ^{on July} 1841 the said ~~...~~ ~~...~~ ~~...~~
 tract 82 ~~...~~ ~~...~~ ~~...~~ ~~...~~ and
 during the ~~...~~ ~~...~~ ~~...~~ ~~...~~ ~~...~~
 ever any ~~...~~ ~~...~~ ~~...~~ upon said
 tract ~~...~~ ~~...~~ ~~...~~ ~~...~~ ~~...~~
 the ~~...~~ ~~...~~ ~~...~~ ~~...~~ ~~...~~
^{...} ~~...~~ ~~...~~ ~~...~~ ~~...~~
~~...~~ ~~...~~ ~~...~~ ~~...~~

San Diego
Dec^r 9th 1890

Mr. Whaley.

Dear Sir.

I was called away to National City
at noon today, to see about some freight to
S.F. and was detained much beyond the time
of our appointment

I am truly sorry, but trust you were
not inconvenienced

Please make my excuses to Mr. Whaley
& your daughter, & hoping you have recovered from
your yesterday's attack, & with kind regards
to your Son

Believe me

Very faithfully yours
Rob. W. Anderson.



Whaley Esq.
933 State St.
San Diego Cal.

C. A. BURGOYNE,
— GENERAL —
REAL ESTATE BROKER.
— AND —
LOAN AGENT.

911 FIFTH STREET.

A. E. DODSON,
COM'R OF DEEDS, NOTARY PUBLIC,
LIFE AND FIRE INSURANCE
— AND —
GOVERNMENT LANDS.

San Diego, Cal.

Aug 16th 1890

Mr. J. H. Whaley,
Dear Sir:

Will you do me a job
of printing on a set of the
\$5 @ claim I paid the California
Star for "ad" not completed.
If so I desire some cards and
letter heads.

Yours truly
A. E. Dodson



Mr. F. N. Whaley
Job Printer
D Street
City

61 Canyon San Diego Co. Calif.
~~Jan~~ Feb. 1st 1890.

Messrs. Whaley & Howard.

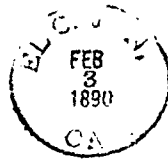
San Francisco.

News in re-
ply to advice is at hand. If you are
closing out your business please kindly
and on by mail the entire map of
my place that I sent you, and also
the letter of particulars in regard to it
that I wrote you at that time if you have
it on file with the map. While I remain

Very Respectfully yours
Merritt P. Wood

If not delivered within 10 days, to be returned to

MONIE P. HAYES, El Cajon Calif.



Mrs. J. Whaley & Monna
San Diego City

Mrs. J. Whaley & Monna Block 5th St.
Rooms 3-445-

Calif.

1890

LETTER TO COMMON COUNCIL
RE: WIDTH OF STREETS

To the Common Council of the City of San Diego,

I respectfully ask a reconsideration of your "Resolution of Intention" to order the grading of certain streets from the south line of Calmika Street, Middletown, to the Plaza, Old Town, adopted April 8th, 1890.

So much of the route in Middletown to the corner of Winder & India Streets, as specified in said "Resolution of Intention" ~~is approved~~ ^{is approved} ~~from~~ this point, I would suggest to continue the grading along India Street, to the boundary line between Middletown and Middletown Addition - thence along Spencer St., in Middletown Addition, to the boundary line of Old Town ~~and~~ at the point intersected where San Diego Avenue terminates commences - thence along San Diego Avenue to the Plaza, Old Town - thence across the Plaza to Garden St.

—Thence along Garden Street (which may be widened to 75 feet,) to Taylor Street, which is 100 feet wide. By adopting this route, the question, as to the width of the tier of blocks between San Diego Avenue and Congress streets, whether 350 or 300 ft. ~~wide~~, will be avoided, and a much shorter and almost direct route, without turning a corner ^{from} D St., New Town, to Taylor St., Old Town, ~~and~~ of a uniform width of 75 ft. The entire distance, will be obtained, costing about the same as the present proposed zig-zag course, through that portion of Old Town where the streets are only 50 ft. wide; but, ~~even though costing~~ ^{in spite of the cost} ~~more~~, by enlarging the district to be assessed for the improvement, the cost, pro rata, might ~~be~~ ^{be} reduced ~~from the~~ ^{proportion} ~~of the~~ ^{of the} present "Indenture". Taylor St., ~~however~~, may hereafter

be extended across Pueblo Lot 1103, and thence
up the valley, in a direct line, to Pueblo Lot
1106, to connect with the Poway ^{Road} and
Mission Grade ~~roads~~ ^{the mesa, University Hill,} San Diego, ~~and~~ also
~~extended~~ to connect with ^{the} road to Roseville and
La Playa; ~~also~~ ^{and} to connect with the road to
Morena, Pacific Beach, etc, along the line of the
Railroad.

Respectfully Submitted,

(Signed) Thomas Whaley,

San Diego, May 5, 1890.

Second St
1/4 ft.

Hancock St

Windsor St

Langford St

Windsor St

Garden St

Garage

St. Lawrence

90 ft.

St. Lawrence

St. Lawrence

Copy Enrolled in Superior Court
April 1890

Wm Howard
President of
National Bank of San Diego
Dear Sir

Received from
Wm Howard
Platified Agent of San
& Purchase of Wm Howard
Pouster to Wm Howard
for San 324 - full of
Pouster & Co. B. H. Jones

and
ter to Belle H. Strain of N. C. said
lots. Both ~~of the same date~~
Dec 24/84 The ~~same~~ ^{three} ~~instruments~~
we ~~offer~~ (keeping and ~~reserving~~ ^{reserving} ~~the~~
~~request~~ you to forward ~~nothing~~ ^{nothing} ~~more~~
~~these~~ ~~by~~ ~~given~~. In case the
~~disposition~~ ~~of~~ ~~the~~ ~~same~~ ~~is~~ ~~made~~
~~for~~ ~~the~~ ~~benefit~~ ~~of~~ ~~the~~ ~~same~~ ~~party~~
should ~~you~~ ~~be~~ ~~able~~ ~~to~~ ~~do~~ ~~so~~ ~~to~~
you ~~the~~ ~~same~~ ~~as~~ ~~to~~ ~~the~~ ~~same~~ ~~party~~
Jan 2/85 - ~~in~~ ~~the~~ ~~case~~ ~~of~~ ~~the~~ ~~same~~ ~~party~~
of ~~the~~ ~~same~~ ~~party~~ ~~as~~ ~~to~~ ~~the~~ ~~same~~ ~~party~~
please ~~send~~ ~~the~~ ~~same~~ ~~to~~ ~~the~~ ~~same~~ ~~party~~
and ~~the~~ ~~same~~ ~~party~~ ~~as~~ ~~to~~ ~~the~~ ~~same~~ ~~party~~
and ~~the~~ ~~same~~ ~~party~~ ~~as~~ ~~to~~ ~~the~~ ~~same~~ ~~party~~
mean ~~the~~ ~~same~~ ~~party~~ ~~as~~ ~~to~~ ~~the~~ ~~same~~ ~~party~~

Feb. 26/1890 -

Received from J Whains one copy of
Pooles Map of 1854, one copy of Tide Lots
Map and one copy of portion of Middletown
made previous to partition which I promised to
return on demand in addition to a true copy
of Pooles map of 1854

J. W. Shaw
City Engineer

San Diego

Maps Returned by
I gave him a receipt
W. H. Kelsey

M. S. BABCOCK,
LAWYER.

BABCOCK & SHORT,
SAN DIEGO.

San Diego Mich. 31st 1878

Recd of Geo. Thaley the sum
of \$25 returned in the case
of R. Howard vs. Geo. Thaley, balance
to be \$50.-

M. S. Babcock

\$ 158 50/100

SAN DIEGO, CAL.,

March 14th 1890

I *Six Months* after date, without grace, for value received,
promise to pay to the order of *Das Stockton, Valle and*
Northrup

the sum of *One hundred fifty eight 50/100* Dollars,
with interest thereon from this date until payment, at the rate of *One*
per cent per *month* payable *quarterly* and if not so paid, then to become part
of the principal of this Note, and to bear like rate of interest till paid. Both principal and
interest to be paid in United States gold coin. And I further agree that in the event
of suit being brought against *me* then there shall be added to any judgment against
me rendered in said suit, as counsel fees, an additional sum of *ten* per
centum in like gold coin, upon the amount of the principal and interest hereof accrued, at the
time of the entry of such judgment; or, if paid before judgment and after action commenced,
then on the amount at the date of payment.

No.

Paid

Das Stockton

The hearing on the application to set
 aside the writ in the Estate of Budd is set for
 Friday - March 21st at 2 P. M. Your Honor
 is very much appreciated for the
 manner in which you
 have handled this.
 Yours truly
 Edith Hammond

LEGAL NOTICES

SUMMONS

In the Superior Court of the County of San Diego, State of California.
 E. Moman, Administrator of the estate of Charles G. Budd, deceased; James P. Budd and Susan J. Budd, by their guardian, defendant; E. W. Handcock, Plaintiff; W. H. Davis, Maria J. Davis, George F. Hooper, A. H. Hotchkiss, H. C. Christian, Nellie E. de Pedrona, Edwin Parker, Maggie Leach, and Magdalene Leach, co-defendants; the last will and testament of Wallace Leach; A. Overbaugh, P. C. Remondino, Miguel Aguirre, Mary Ann Gates, Elena E. de Wolfkill, W. H. Conkling, W. A. Wladar, administrators of the estate of A. B. Gray; T. D. Daley, administrator of the estate of Thos. D. Johns; and Miguel Aguirre, administrator of the estate of Miguel de Pedrona, Sr., defendants.
 Action brought in the Superior Court of the County of San Diego, State of California; and the amended complaint filed in said county of San Diego, in the office of the Clerk of said Superior Court, on the 15th day of October, 1908. The people of the State of California, acting by and through the undersigned attorneys, appearing to W. H. Davis, Maria J. Davis, George F. Hooper, A. H. Hotchkiss, H. C. Christian, Edwin Parker, Maggie Leach, and Magdalene Leach, the last will and testament of Wallace Leach; A. Overbaugh, P. C. Remondino, Miguel Aguirre, Mary Ann Gates, Elena E. de Wolfkill, W. H. Conkling, W. A. Wladar, administrators of the estate of A. B. Gray; T. D. Daley, administrator of the estate of Thos. D. Johns; and Miguel Aguirre, administrator of the estate of Miguel de Pedrona, Sr., defendants.
YOU ARE HEREBY REQUIRED TO APPEAR in an action brought against you by the above named plaintiffs in the Superior Court of the County of San Diego, State of California, and to answer the amended complaint filed herein within ten days (exclusive of the day of service) after the service on you of this summons - if served within this county; or if served elsewhere, within thirty days - or judgment by default will be taken against you according to the prayer of said amended complaint.
 The said action is brought to obtain a decree of this court quieting the title of plaintiffs to certain lands hereinafter described. That defendants may be required to set forth the nature of their respective claims; and that all adverse claims of the defendants, or either of them, may be determined by decree of this Court, and that by said decree it be declared and adjudged that plaintiffs J. P. Budd and Susan J. Budd are the owners of said premises, and that the defendants have no estate or interest whatever in said land; and also that the defendants, and each of them, be forever debarred from asserting any claim whatsoever in or to said premises adverse to plaintiffs, and for such other and further relief as to equity shall seem meet.
 That the land and premises heretofore referred to is situate in the city of San Diego, county of San Diego, State of California, as follows, to-wit:
 Lot K in block forty-one (41) of New San Diego, according to the official map thereof by Gray & Johns; otherwise known as lot K of block 759 of New San Diego, according to the map thereof, made by Charles H. Poole.
 For further particulars of said action, you are hereby referred to the amended complaint hereon filed.
 And you are hereby notified that if you fail to appear and answer the said amended complaint as above required, the said plaintiffs will apply to the Court for the relief therein demanded.
 Given under my hand and seal of the Superior Court of the County of San Diego, State of California, this 15th day of October, in the year of our Lord one thousand eight hundred and eighty-nine.
 M. D. HAMILTON, Clerk.
 By R. B. BIRD, Deputy,
 BENDRICK & YOUNG, Attorneys for Plaintiff.

E. W. HENDRICK
HENDRICK & YOUNKIN,
ATTORNEYS AT LAW,
F STREET, BET. FIFTH AND SIXTH.

NO. 202, 114.

San Diego, Cal., March 19th 1890.

Thos Whaley Esq
Dear Sir:

The hearing on the application to sell
real estate on the Estate of Rudd is set for next
Friday - March 21st at 2 P. M. Mr. Monahan
is away, and you had better be present on that
occasion to assist me.

Yours
E. W. Hendrick

LEGAL NOTICES

SUMMONS.

In the Superior Court of the County of San Diego, State of California.

R. Momand, administrator of the estate of Charles G. Rudd, deceased, James P. Rudd and Susan J. Rudd, by their guardian, Adam; R. W. Hendrick, by their guardian, Adam; Maria J. Davis, George F. Hooper, A. H. Hotchkiss, H. T. Christian, Nellie B. de Pedrona, Elisen Pedrona, Edwin Parker, Miguel Leach, executrix of the last will and testament of Wallace Leach; Overbaugh, Gales, P. C. Remondino, Miguel Aguirre, Mary Ann Skilla, Elena E. de Wolfskill, N. H. Conklin, W. A. Winder, administrator of the estate of A. B. Gray, T. J. Daley, administrator of the estate of Thos. D. Johns, and Miguel Aguirre, administrators of the estate of Miguel de Pedrona, Sr., defendants.

Action brought in the Superior Court of the county of San Diego, State of California, and the amended complaint filed in said county at San Diego, in the office of the Clerk of said Superior Court.

The people of the State of California send greeting to W. H. Davis, Maria J. Davis, George F. Hooper, A. H. Hotchkiss, H. T. Christian, Nellie B. de Pedrona, Elisen Pedrona, Edwin Parker, Miguel Leach, executrix of the last will and testament of Wallace Leach, A. Overbaugh, P. C. Remondino, Miguel Aguirre, Mary Ann Gales, Elena E. de Wolfskill, N. H. Conklin, W. A. Winder, administrator of the estate of A. B. Gray, T. J. Daley, administrator of the estate of Thos. D. Johns, and Miguel Aguirre, administrator of the estate of Miguel de Pedrona, Sr., defendants.

YOU ARE HEREBY REQUIRED TO APPEAR in an action brought against you by the above named plaintiffs in the Superior Court of the county of San Diego, State of California, and to answer the amended complaint filed herein within ten days (exclusive of the day of service) after the service on you of this summons—If served within this county; or if served elsewhere, within thirty days—or judgment by default will be taken against you according to the prayer of said amended complaint.

The said action is brought to obtain a decree of this court quieting the title of plaintiffs to certain lands hereinafter described. That defendants may be required to set forth the nature of their respective claims; and that all adverse claims of the defendants, or either of them, may be determined by decree of this Court, and that by said decree it be declared and adjudged that plaintiffs, J. P. Rudd and Susan J. Rudd are the owners of said premises, and that the defendants have no estate or interest whatever in said land; and also that the defendants, and each of them, be forever debarred from asserting any claim whatsoever in or to said premises adverse to plaintiffs, and for such other and further relief as to equity shall seem meet.

That the land and premises hereinabove referred to is situate in the city of San Diego, county of San Diego, State of California, as follows, to wit:

Lot K in block forty-one (41) of New San Diego, according to the official map thereof by Gray & Johns, otherwise known as lot K of block 769 of New San Diego, according to the map thereof made by Charles H. Poole.

For further particulars of said action you are hereby referred to the amended complaint herein on file.

And you are hereby notified that if you fail to appear and answer to said amended complaint as above required, the said plaintiffs will apply to the Court for the relief therein demanded.

Given under my hand and seal of the Superior Court of the county of San Diego, State of California, this 15th day of October, in the year of our Lord one thousand eight hundred and eighty-nine.

M. D. HAMILTON, Clerk.
By R. B. REED, Deputy.
WENDICK & YOUNKIN, Attorneys for Plaintiffs.

Union Probate. Apr 27/90

In the Superior Court of the County of San Diego, State of California.
In the matter of the estate of C. G. Rudd, deceased.

Notice of sale of real estate.

Notice is hereby given that in pursuance of an order of the Superior Court of the County of San Diego, State of California, made on the 25th day of April, 1890, in the matter of the estate of C. G. Rudd, deceased, the undersigned, the administrator of the estate of C. G. Rudd, deceased, will sell at private sale, to the highest bidder, for cash, and subject to confirmation by said Superior Court, on Wednesday, the 30th day of April, 1890, at the office of E. W. Hendrick, in the Marston Building, in the County of San Diego, all the right, title, interest and estate of the said C. G. Rudd at the time of his death, and all the right, title and interest that the said estate has by operation of law or otherwise acquired since then or in addition to that of the said C. G. Rudd at the time of his death, in and to all that certain lot, piece or parcel of land, situate and being in the said County of San Diego, State of California, bounded and described as follows: Lot K, in block forty-one of New San Diego.

All bids to be made in writing to E. W. Hendrick, at his office, and the administrator reserves the right to reject any and all bids.

Terms and conditions of sale: Cash; 10 per cent of the purchase money to be paid to the undersigned on day of sale, balance on confirmation of sale by said court.

Deed at the expense of purchaser.
R. MOMAND,
Administrator of the estate of C. G. Rudd, deceased.
E. W. Hendrick, Attorney of the Administrator.
Dated April 9, 1890.

Union Probate. Apr 27/90

In the Superior Court of the County of San Diego, State of California.
In the matter of the estate of C. G. Rudd, deceased.

Notice of sale of real estate.

Notice is hereby given that in pursuance of an order of the Superior Court of the County of San Diego, State of California, made on the 25th day of April, 1890, in the matter of the estate of C. G. Rudd, deceased, the undersigned, the administrator of the estate of C. G. Rudd, deceased, will sell at private sale, to the highest bidder, for cash, and subject to confirmation by said Superior Court, on Wednesday, the 30th day of April, 1890, at the office of E. W. Hendrick, in the Marston Building, in the County of San Diego, all the right, title, interest and estate of the said C. G. Rudd at the time of his death, and all the right, title and interest that the said estate has by operation of law or otherwise acquired since then or in addition to that of the said C. G. Rudd at the time of his death, in and to all that certain lot, piece or parcel of land, situate and being in the said County of San Diego, State of California, bounded and described as follows: Lot K, in block forty-one of New San Diego.

All bids to be made in writing to E. W. Hendrick, at his office, and the administrator reserves the right to reject any and all bids.

Terms and conditions of sale: Cash; 10 per cent of the purchase money to be paid to the undersigned on day of sale, balance on confirmation of sale by said court.

Deed at the expense of purchaser.
R. MOMAND,
Administrator of the estate of C. G. Rudd, deceased.
E. W. Hendrick, Attorney of the Administrator.
Dated April 9, 1890.

OFFICE OF
E. W. MORSE,
Room 28, Pierce-Morse Block.
P. O. Box 14.

San Diego, Cal. 188

Geo H. Weeks.

City Tax pd and Receipt sent. 7/17/11
by Whaley & Monahan.

82 Co Tax (val \$429) \$ 8.03
3% .40
Costs 1.50

Pd by W. Whaley Feb. 28/90 \$ 9.93
Required 94
Sent Receipt to him in amount of 93

March 4/90
at San Antonio, Texas,
with request to return amt
to our c/o Geo. H. Morse,
Morse's Clerk

San Diego, March 4/90.

Paid June 1890

OFFICE OF

◀ E. W. MORSE, ▶

Room 26, Pierce-Morse Block.

P. O. Box 14.

San Diego, Cal. 188

Geo H. Weeks.

City Tax pd and Receipt sent. 7/17/11
by Whaley & Menard.

82 C^{ts} Tax (val \$429) \$ 8.03
33/10 .40

Costs 11.50
Pd by Whaley, Feb. 28/93 \$ 9.93
Received 19

Sent Receipt to him because
March 4/93

at San Antonio, Texas,
with request to remit amt
to our c/o F. W. Stewart,
Morse's Clerk

San Diego, March 4/93

Paid June 1890

Pay to order of
C. P. Johnson
WITHOUT RECOURSE TO ME.

John Sherman
Master

Pay to order of
John Sherman.
C. P. Johnson

OFFICE OF
E. W. MORSE,

Room 26, Pierce-Morse Block.

P. O. Box 14.

San Diego, Cal. Feb 7th 1890

Friend Whaley

The \$5⁰⁰ - received.
I gave Mrs Whaley checks for
\$100 - as you requested,
although money is very
scarce with me yet, I am
still a borrower - it will
be sometime before I shall
actually realize anything
from the sale in pocket,
I mean.

The woman did
not appear to rent the
3rd & 4th floors.

The Bolpover & Co.
intent was paid.

The international Co
were notified in season and
paid several days ago.

 **TOILETTY** 

APPLY TO

MORSE, WHALEY & DALTON.

with your garment made

TO LET!

APPLY TO
MORSE, WHALEY & DALTON.

*with open Payment and the
Assignment made*

Mr. H. B. ...

April 9/90

enclosed for your consideration of the 10th
of ...
situation for ...
provided you ...
sign the ...
agreement to ...

you send it to Mrs. ...
who I believe has your agreement of
Sale & Purchase of ...
more ad.) with ...
him, after I have signed you I
have signed, to go with me
to the ...
the same in the hands of ...

Howard, President together with
the agreement, on your part,
and the ...
requesting him to ...
consent with the ...
contract in the ...

...
...
...
...
...

San Diego Chamber of Commerce.

San Diego, Cal. December 3^d 189.0

Mr. Thos. Whaley

SIR:

According to the books your account stands as follozes:

Dues for January	\$
" February
" March
" April
" May
" June
" July	1. -
" August	1. -
" September	1. -
" October	1. -
" November	1. -
" December
	<hr/>
	\$ 5. -

Dues are \$1.00 per month; \$5.00 for six months in advance, \$10.00 for twelve months in advance.

Very respectfully,

Financial Agent.

San Diego July 2/90

Friend Whaley

Will it not
be convenient for
you to pay the
Rouse note -
I would like to
pay my proportion
- I find I don't like
to pay so big an interest
as 12%.

As you have
made a loan I
thought perhaps you
might like to pay
it.

Yours
Paid in full
(more has Rouse note) Morse
Photo house

had some paper, which was to be had with
 counter. I had had some of the property
 to do. He could not have any of the
 wanted. But I can be that the amount was
 estimate Franks and so I was satisfied in
 suit. He said he might want to go
 to the office and see the papers.

Do I prefer it to change to do
 in Stewart's hands and that I would
 be responsible then as to what the furniture
 would be for or paid, besides he was to have
 the cash for it which he said was in
 hand and the money he should receive
 from a pay for work done as far as possible
 and by the parties in effect com-
 mitted with them. It was understood
 that he should be paid for the work done
 and that was your account. I was not
 paid for the work done and I was not

write something that he enclosed
in thanks to Arthur ...
Chas. C. ...

He is the ...
last in a line of ...
to make as he said, a clear
of the funds be
to the father of the farm and was un-
able to pay these taxes that he refused to
be arrested for tax but he would
plead that he was not to be arrested behind
the return which he had taken against
them and other county officers.

to help him out and had ... his
good friend and returned him to ...
to let him as a partner for ...
was
of ...
the court about ... of \$300 to meet
the
Statement and
and
and established
may
be

John Gaybe Esq
Clarinda Iowa
CONSOLIDATED NATIONAL BANK.

SOUTHWEST COR. FIFTH AND G STREETS.

SAN DIEGO, Aug. 27. 1880.

Thos. H. Gray Esq
City

DEAR SIR:

We beg to call your attention to payments due at this bank as follows:—

Your note in favor of *Thos. H. Gray*
Principal, \$ *1000* due *Sept. 1* 1880
Interest, \$ *30* due *Sept. 1* 1880
Total *1030.*

Respectfully Yours,
J. J. B. ...
CASHIER.

Renewed for 6 mos ...
Sept 1 1880

Consolidated National Bank,

SOUTHWEST COR. FIFTH AND G STREETS.

SAN DIEGO, May 26 1891

Mrs. Anna E. Whaley

DEAR SIR:

We beg to call your attention to payments
due at this bank as follows—

Interest on your note to \$1000.

due June 1 amounting to \$3000
note of Mrs. Whaley to

John Seavey

Respectfully Yours,

J. H. BARBOUR, Cashier

J. H. BARBOUR, Cashier

— January 15, 1890 —

(From the Quinn)
A Serious Charge.

Real Estate Agent Wm. D. Brown Involved in
an Oligly Difficulty.

Last evening a warrant for the arrest of
R. W. Brown, of the firm of Whaley and Brown,
was issued in the case of Miss Helen D. Grady, of
Grady, Cal., through her attorney J. C. Western. The
warrant charges Brown with the embezzlement of
about \$311.20, the property of the complainant. This
shortage was discovered some time since and an
effort has been made to settle it, but the effort has
been made to settle it, but the effort has not been suc-
cessful, as is shown by the above. An examination
into the books of the company shows a shortage
of about \$1500.00, all of which is due to property
holders here who are not at present in the city.
Much of it was not to be applied on either city or
county taxes.

Brown has been in business here for
something over two years, having been in business
since his partnership with others.

Special May 16, 1890.

L. C. Quinn.

MONEY RECEIPT.

Amount, \$ 25.⁰⁰

Wells, Fargo & Co's Express.

READ THE CONDITIONS OF THIS RECEIPT.

(18.)

SAN DIEGO, CAL.

DEC 4 1890

RECEIVED from Mrs. A. Whaley

Corin Valued at Twenty five dollars

Addressed Miss A. Lannan S. P. Co.

Which we undertake to forward to the point nearest destination reached by this Company, on these conditions, namely: That Wells, Fargo & Co's Express shall not be held liable for loss or damage, except as forwarded only, within their own lines of communication; nor for any loss or damage by fire, or casualties of navigation, and inland transportation; nor for such as can be referred to the acts of God, the restraints of government, riot, insurrection, piracy, or the hazards of war; nor for default, neglect, or mishap on the part of any connecting or intermediate line, (individual, corporation, or association) to whom the said property may be transferred for further transmission; nor for an amount exceeding Fifty Dollars on any shipment unless its true value is herein stated. And it is further stipulated that Wells, Fargo & Co's Express shall not be liable, under this contract, for any claim whatsoever, unless presented, in writing, within sixty days from the date hereof; and that these provisions shall extend to and inure to the benefit of each individual, corporation, or association to whom the above specified property may be transferred and entrusted in order to reach its destination.

The party accepting this Receipt thereby agrees to its conditions.

NOT NEGOTIABLE.

For the Company,

Charges, \$ Paid

MONEY RECEIPT.

Amount, \$ 25.⁰⁰

Wells, Fargo & Co's Express.

READ THE CONDITIONS OF THIS RECEIPT.

(18.)

SAN DIEGO, CAL.

March 6 1890

RECEIVED from Mrs. A. Whaley

Corin Valued at Twenty five dollars

Addressed Miss V. E. Lannan San Francisco

Which we undertake to forward to the point nearest destination reached by this Company, on these conditions, namely: That Wells, Fargo & Co's Express shall not be held liable for loss or damage, except as forwarded only, within their own lines of communication; nor for any loss or damage by fire, or casualties of navigation, and inland transportation; nor for such as can be referred to the acts of God, the restraints of government, riot, insurrection, piracy, or the hazards of war; nor for default, neglect, or mishap on the part of any connecting or intermediate line, (individual, corporation, or association) to whom the said property may be transferred for further transmission; nor for an amount exceeding Fifty Dollars on any shipment unless its true value is herein stated. And it is further stipulated that Wells, Fargo & Co's Express shall not be liable, under this contract, for any claim whatsoever, unless presented, in writing, within sixty days from the date hereof; and that these provisions shall extend to and inure to the benefit of each individual, corporation, or association to whom the above specified property may be transferred and entrusted in order to reach its destination.

The party accepting this Receipt thereby agrees to its conditions.

NOT NEGOTIABLE.

For the Company,

Charges, \$ Paid

MONEY RECEIPT.

Amount, \$ 25.00

Wells, Fargo & Co's Express

READ THE CONDITIONS OF THIS RECEIPT.

(18.)

SAN DIEGO, CAL.

Aug. 4 1870

RECEIVED from Mrs. J. Whaley

Valued at Twenty five class.

Addressed Mrs. A. Lammie

S. J. Co.

Which we undertake to forward to the point nearest destination reached by this Company, on these conditions, namely: That Wells, Fargo & Company shall not be held liable for loss or damage, except as forwarded only, within their own lines of communication; nor for any loss or damage by fire, or casualties of navigation, and inland transportation; nor for such as can be referred to the acts of God, the restraints of Government, riot, insurrection, piracy, or the hazards of war; nor for default, neglect, or mishap on the part of any connecting or intermediate line, (Individual, corporation, or association) to whom the said property may be transferred for further transmission; nor for an amount exceeding Fifty Dollars on any shipment unless its true value is herein stated. And it is further stipulated that Wells, Fargo & Company shall not be liable, under this contract, for any claim whatsoever, unless presented, in writing, within sixty days from the date hereof; and that these provisions shall extend to and inure to the benefit of each individual, corporation, or association to whom the above specified property may be transferred and entrusted in order to reach its destination.

The party accepting this Receipt thereby agrees to its conditions.

NOT NEGOTIABLE.

For the Company,
Primer.

Charges, \$ 10.00

MONEY RECEIPT.

Amount, \$ 25.00

Wells, Fargo & Co's Express

READ THE CONDITIONS OF THIS RECEIPT.

(18.)

SAN DIEGO, CAL.

Sept 5 1870

RECEIVED from Mrs. Whaley

Valued at Twenty five class

Addressed Mrs. Amelia Lammie

San Francisco

Which we undertake to forward to the point nearest destination reached by this Company, on these conditions, namely: That Wells, Fargo & Company shall not be held liable for loss or damage, except as forwarded only, within their own lines of communication; nor for any loss or damage by fire, or casualties of navigation, and inland transportation; nor for such as can be referred to the acts of God, the restraints of Government, riot, insurrection, piracy, or the hazards of war; nor for default, neglect, or mishap on the part of any connecting or intermediate line, (Individual, corporation, or association) to whom the said property may be transferred for further transmission; nor for an amount exceeding Fifty Dollars on any shipment unless its true value is herein stated. And it is further stipulated that Wells, Fargo & Company shall not be liable, under this contract, for any claim whatsoever, unless presented, in writing, within sixty days from the date hereof; and that these provisions shall extend to and inure to the benefit of each individual, corporation, or association to whom the above specified property may be transferred and entrusted in order to reach its destination.

The party accepting this Receipt thereby agrees to its conditions.

NOT NEGOTIABLE.

For the Company,
W. H. Goodbody

Charges, \$ paid 20

100
R
\$9.00
7/1
Mrs.

San Diego, Calif. Aug 6th 1890
RECEIVED from Mrs. J. W. Haley
Five ————— Dollars
For Rent of Commission on sales of \$1000
from ————— 188⁸ to ————— 1889
Rent Must Be Paid In Advance
A. B. Gordon.

San Diego, Calif. April 28th 1898
RECEIVED OF Anna E. Haley
Two hundred fifty ————— Dollars
Interest in full for two years in advance
on mortgage of \$1250. to Daniel Holmes.
Daniel Holmes per [Signature]

Received of Mrs. J. W. Haley the sum of Five Dollars
for Rent of Commission on sales of \$1000 from 1888 to 1889
A. B. Gordon

Lots E. F. G. H. in Bl. 110

" 7, 8, 9, 10, 11, 12. in Bl. 139

" 13, 14, 15, 16, 17, 18 " 2 114

" 13, 14, 15, 16, 17, 18 " 2 111

Lot - 24 " 86

of Muse Whaley & Dalton's Subdivision
of 15 acres in Pueblo Lot 1140 acc.
a map made by Fox & Ryan, Surveyors,
filed in the Office Recorder Sam Wray
Co. March 1888.

Valuation

Above is my subscription to
new railroad Company according
to printed form, presented to me for
signing by J. J. Mansfield, of
the Committee for creating subscrip-
tions
2000⁰⁰
Jan'y 23/98 J. J. Whaley.
1900 for bond.

LIEUT. COL. GEO. H. WEEKS,
DEPUTY JR. MR. GENL., U. S. ARMY.

HEADQUARTERS DEPARTMENT OF TEXAS,

CHIEF QUARTERMASTER'S OFFICE.

SAN ANTONIO, TEXAS, *March 8* 18 *90*

Wm. Whaley

care of

F. W. Stewart

Dear Whaley,

I am much obliged
to you for attending to
the taxes. On Feb. 28.
I sent a postal order
to Whaley & Dalton
covering these taxes.
Please see if that
order can be utilized
to reimburse you. If
not have it sent back

LIEUT. COL. GEO. H. WEEKS,
DEPUTY QU. MA. GENL., U. S. ARMY.

QIE

WAR I
HEADQUARTERS
M. GEN. QUARTERS
OFFICE
SAN DIEGO
TEX.



TEXAS.

Any person using the
office on private mail will be
subject to a fine of five hundred dollars.

F. W. Stewart
(For Thos. Whaley)
Room 14 - Pierce House Hotel
San Diego California

LIEUT. COL. GEO. H. WEEKS,
DEPUTY QR. MR. GENL., U. S. ARMY.

HEADQUARTERS DEPARTMENT OF TEXAS,

CHIEF QUARTERMASTER'S OFFICE.

SAN ANTONIO, TEXAS, *Feb. 8* 18 *90*

Wm. Whaley

care of

F. W. Stewart

Dear Whaley,

I am much obliged
to you for attending to
the taxes. On Feb. 28
I sent a postal order
to Whaley & Dalton
covering these taxes.
Please see if that
order can be utilized
to reimburse you. If
not have it sent back

I have often to the
writer. I would like
to get rid of that
property the moment
I can get everything
over what I give
for it.

Yours truly

Edw. N. Weeks

Winthrop National Bank,

N. F. Tenney, Pres.
W. B. Evans, Vice Pres.
C. H. Wilham, Cashier.

Boston, Nov. 28, 1890.

Messrs Whaley & Monand

Dear Sirs:

Will you please
inform me what lots # 33 34 35
Bldg for Money Adv. would be
worth?

Respectfully yours
A. Small.

MEMORANDUM.

GEO. D. DORNIN,
MANAGER.

WM. SEXTON,
ASST. MGR.

NATIONAL INSURANCE CO.

Office of

OF HARTFORD, CONN.

Pacific Branch, 214 Sansome Street,

SAN FRANCISCO.

Agency,

189

E. W. Morse.

*Please loan me ten dollars
to defray expense of loan and bring
fund 1/90.*

~~W. H. Sexton~~

Done - the \$10 =

Paid June 27 1900

\$ 92 $\frac{45}{100}$ -

SAN DIEGO, CAL.,

May - 31

1890

I ~~the said~~ ^{Sue by day}

after date, without grace, for value received,

promise to pay to the order of Chas. F. Chase

the sum of Twenty two - 45/100 Dollars,

with interest thereon from this date until payment, at the rate of One per cent per month payable at maturity and if not so paid, then to become part of the principal of this Note, and to bear like rate of interest till paid. Both principal and interest to be paid in United States gold coin. And I further agree that in the event of suit being brought against me then there shall be added to any judgment against me rendered in said suit, as counsel fees, an additional sum of Twenty per centum in like gold coin, upon the amount of the principal and interest hereof accrued, at the time of the entry of such judgment; or, if paid before judgment and after action commenced, then on the amount at the date of payment.

No.

Chas. F. Chase

~~97~~ 92 45 *San Francisco* *May 28* 31 / 1890

I promise to pay to the order of *Chas A Chase, in the City of San*

Diego Calif the sum of *Ninety Seven* ~~50~~ *00* Dollars.

with interest thereon from this date until payment, at the rate of *One* per cent. per *month* payable *at maturity* and if not so paid, then to become part of the principal of this Note, and to bear like rate of interest till paid. Both principal and interest to be paid in United States gold coin. And

I further agree that in the event of suit being brought against *me* then there shall be added to any judgment against *me* rendered in said suit, as counsel fees, an

additional sum of *Twenty* per centum in like gold coin, upon the amount of the principal and interest hereof accrued, at the time of the entry of such judgment or if paid before judgment and after action commenced, then on the amount at the date of payment.

in settlement of *100* (Signed) *Chas A Chase*

No. *midy 31 / 90* Paid *June 17 / 90*

Continued

Received to me by R. Marmon
this day in the presence of my
wife - which he made at my
request. of P. [unclear]

Auction Sale.
On premises, 1217 5th Street, Friday,
Feb. 14th, at 2 p. m., the entire furniture,
etc. of a seven-room house: consisting of
bed-sets, bed lounge, extension table, side-
board, hanging lamp, lace curtains, fine
portrs., rugs, carpets, easy chairs, toilet
sets, cook and heating stoves, bedding, etc.
For particulars enquire at 822 G Street.

Mr. R. Morand received a communi-
cation requiring his immediate presence
in New York and left for that city yester-
day and expects to return within the
present month. *W. M. P.*

In the case of *W. M. P. vs. Morine*,
the latter being charged with unlaw-
fully retaining in his possession the
printing outfit of the late El Cajon Star,
judgment was rendered against defend-
ant. *W. M. P. Oct 9 1902*

Apr 18/95
5721 K [unclear] 10
Received to [unclear]

Mrs. [unclear] [unclear]
Apr 22 1875
50 Road [unclear] N. Y.
45 [unclear]

Recd Jan. 3/90

Southey, 21. Dec. 23. 77.

Mr. T. S. S. S. S.

Dear Sir,

Your favor of the 11th inst. I received today and hasten to reply to your previous letter in answer received and I would have replied, but had no opportunity to do so. I am sorry to hear that you are still in the mountains and will be some time before you can get down to the valley. I am glad to hear that you are all well and hope you will be able to get down to the valley soon. I am sure you will find it a very pleasant change of scene. I am, Sir, your obedient servant, J. S. S. S.

The very simple receipt stated
that the amount of the
was, but as they
in their receipts as if they
had not been received and
were not to be taken into account
excepted, to make,
I saw these receipts and
immediately, I made some
I wanted to see as many
of them, together with the
receipts of the same, as I
could, and I made a list
of them, and I gave them
to the person who was
responsible for the
the account book, and
also as a receipt for
them as they were
and money to be had
at any time.

the fact of receiving
- Brown's goods from the
in regard to them. I
Some receipts
were of the
amount of \$1000. I do not know that
I am longer bound to receive
\$100 in full payment of
the amount, and that amount
of money will go to the
of the 1st of the month of
January 1889. I have
at present \$1000 in
with me in paper money,
as per agreement,
and I shall remain
1889, my having had
and money to be had
at any time.

SONOMA
MAR
1
1890



Mr. Thomas H. Blake,

983 State St.,

San Diego, Calif.

Friend

Sonoma, Calif., March 17/90.

Mr. Thomas H. Blake,

Dear Sir,

Your letter of the 12th inst. has
come - having been received
yesterday. I am glad to hear
indeed that you have been
so long receiving our paper
promise unfulfilled. But
we have been singularly
unfortunate within the
last year, and more especially
within the last six months
of the winter, since the
first week in Nov. we have
been "snowed out" - literally,
speaking, and more in this
county, we simply had to
shut the place up. The
best of preservation was made

and I have readers on our
 model, have done so, and shall
 readers. we cannot expect
 to pay, if we give more. You
 will receive my receipt for
 the and, and, and, and, and,
 pay for which we are extremely
 grateful, and, if you could
 kindly, in the amount, so
 much as to return it a great
 favor. You hardly - show me
 where it is, I believe, that you
 you could fully understand
 the circumstances that have
 happened, for you would surely
 expect this, as more respects,
 I, in your own spirit we will
 bequest on debt in article 8
 say it. I will give you
 if you deem it necessary for
 the amount - \$105 - and I pay
 interest, money was left
 enough time before this should

which some well knotted
 position in every direction,
 it is possible that this
 attention, as well as to make
 for another, and I know of
 we can do, the money that
 took time to get, as much as
 makes me believe in it, if
 it is some years ago, I think
 to sell my share here. I should
 like to see why we wish so much to
 make it, I should like to know
 and I shall like to know
 with a view to the matter, I
 picture, there, for I have
 kind in mind. I am sorry to
 have to see the kind and
 in many private letters.
 as more than you can, but I will
 not part with it, I
 believe, in your name.

Yours
 Wm. W. C. [unclear]
 [unclear]