

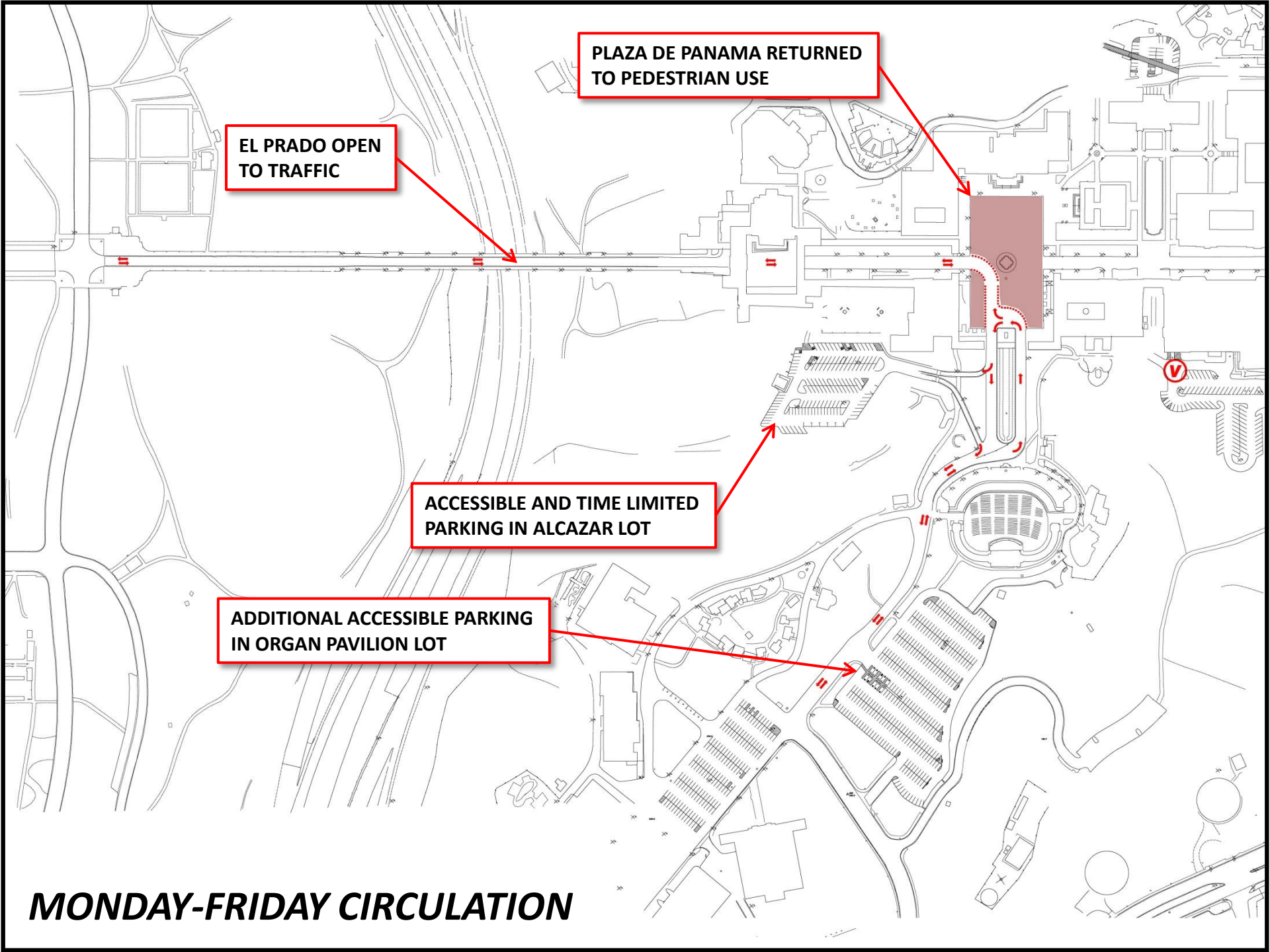
**PLAZA DE PANAMA RETURNED TO PEDESTRIAN USE**

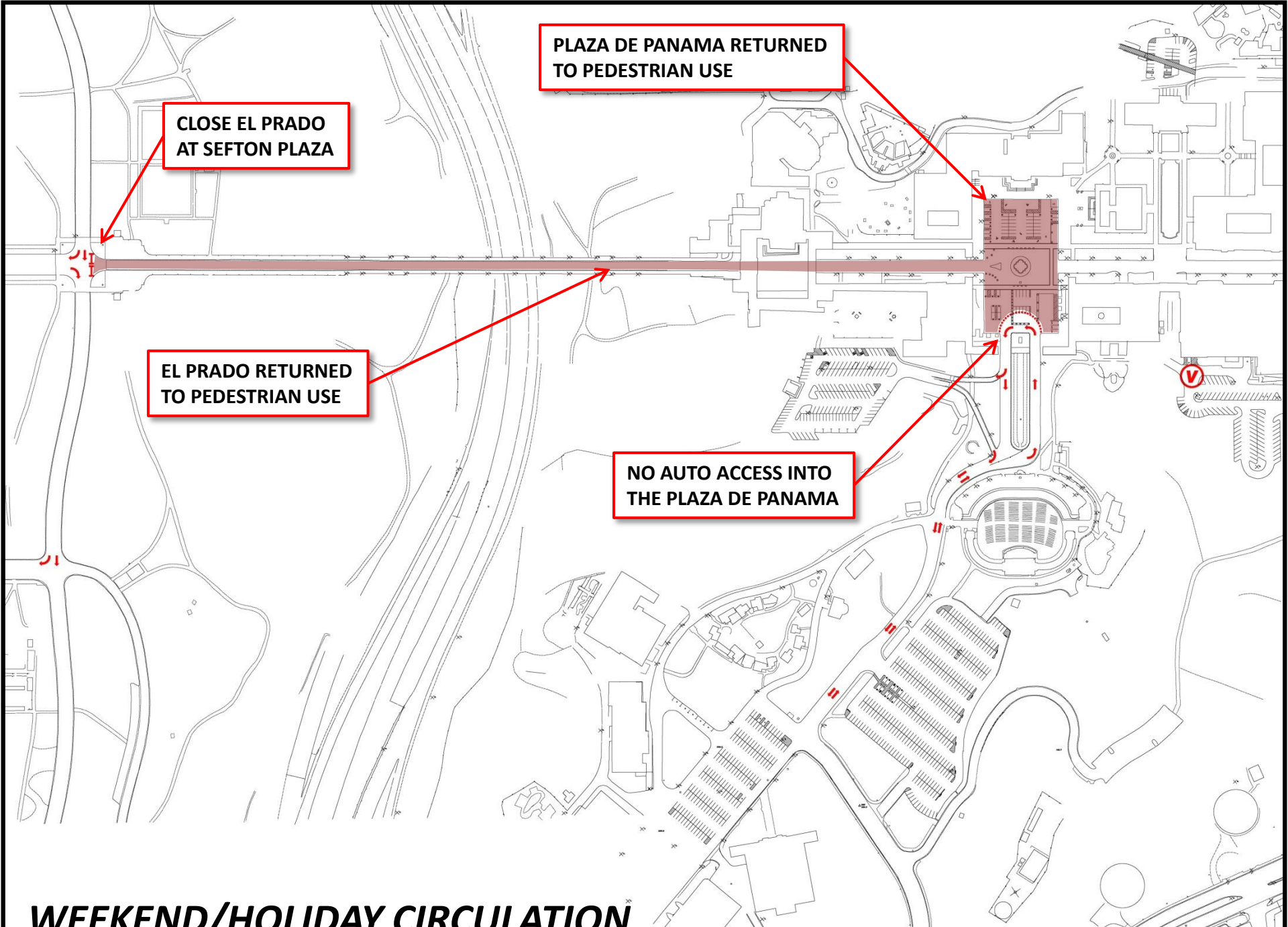
**EL PRADO OPEN TO TRAFFIC**

**ACCESSIBLE AND TIME LIMITED PARKING IN ALCAZAR LOT**

**ADDITIONAL ACCESSIBLE PARKING IN ORGAN PAVILION LOT**

**MONDAY-FRIDAY CIRCULATION**





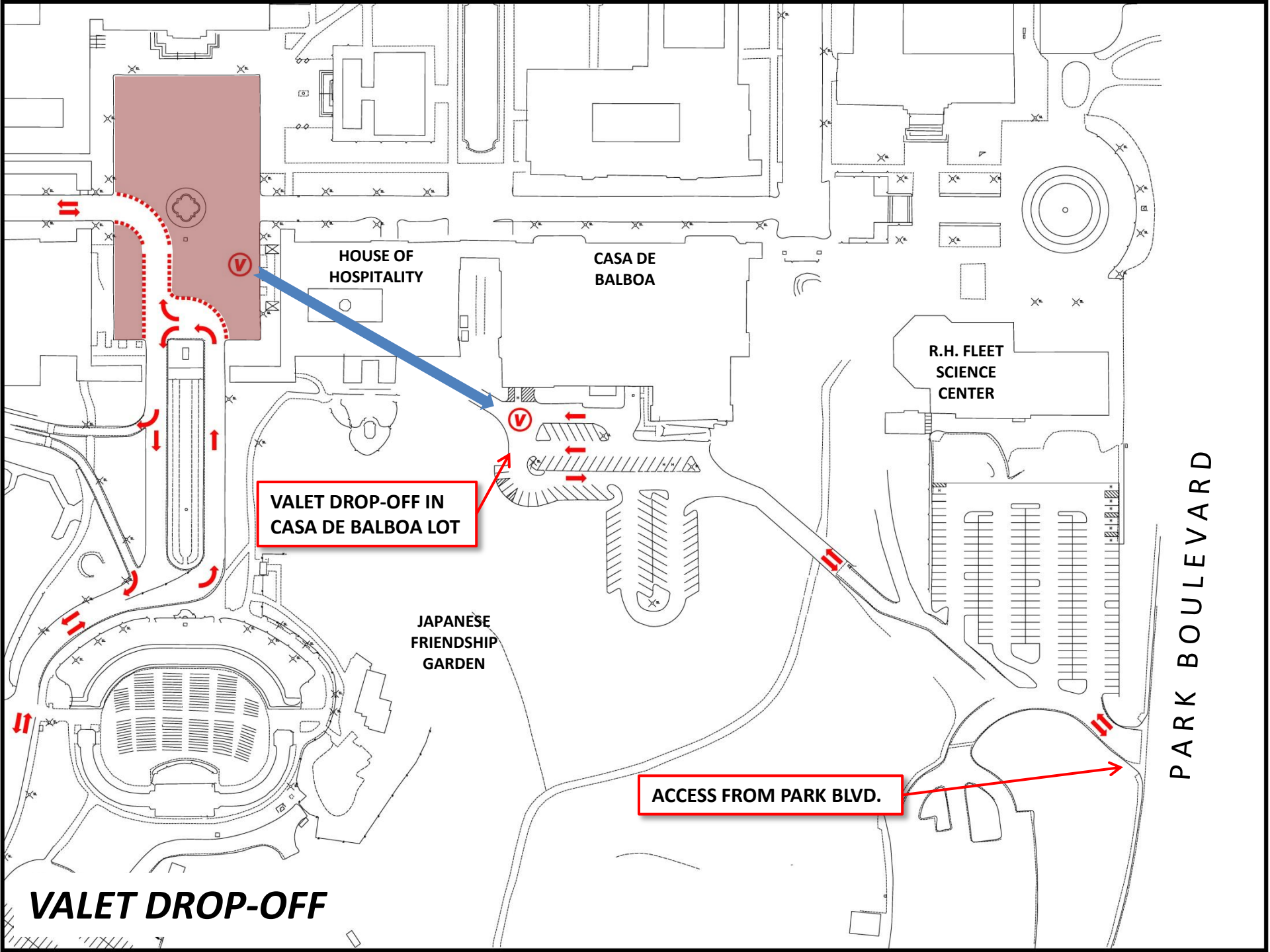
**CLOSE EL PRADO  
AT SEFTON PLAZA**

**PLAZA DE PANAMA RETURNED  
TO PEDESTRIAN USE**

**EL PRADO RETURNED  
TO PEDESTRIAN USE**

**NO AUTO ACCESS INTO  
THE PLAZA DE PANAMA**

**WEEKEND/HOLIDAY CIRCULATION**



HOUSE OF HOSPITALITY

CASA DE BALBOA

R.H. FLEET SCIENCE CENTER

VALET DROP-OFF IN CASA DE BALBOA LOT

JAPANESE FRIENDSHIP GARDEN

ACCESS FROM PARK BLVD.

PARK BOULEVARD

**VALET DROP-OFF**

1. EXISTING PEDESTRIAN PAVING

2. REMOVE SIGNS, WHEEL STOPS AND STRIPING; RE-SURFACE PLAZA

3. ADD NEW TREES IN PLANTERS

4. ADD CAFÉ STYLE TABLES AND CHAIRS

5. SEPARATE PEDESTRIANS FROM AUTOMOBILES

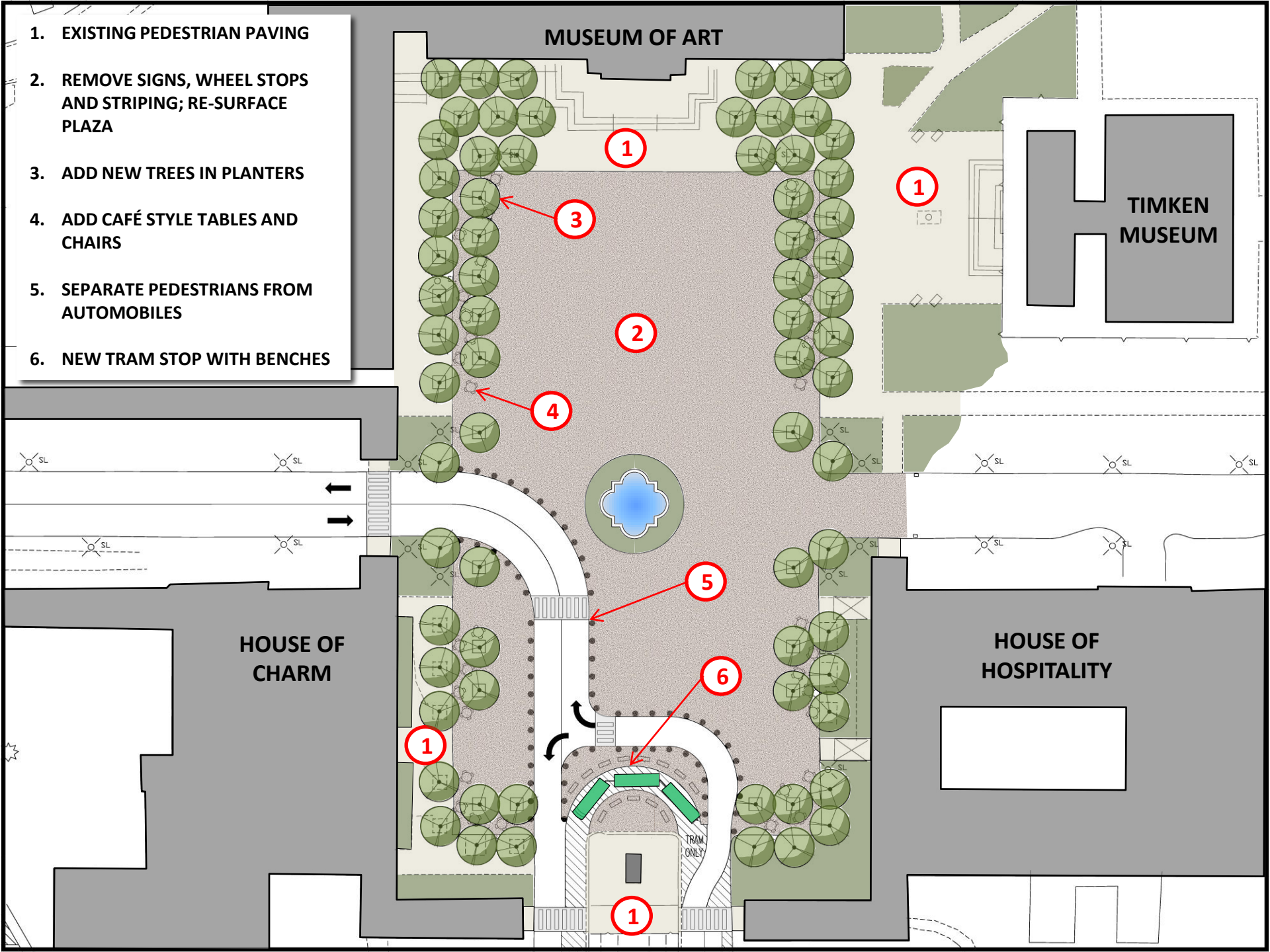
6. NEW TRAM STOP WITH BENCHES

MUSEUM OF ART

TIMKEN MUSEUM

HOUSE OF CHARM

HOUSE OF HOSPITALITY



1. NEW TRAM STOP WITH BENCHES

2. AUTOMOBILE LANE

3. TRAM-ONLY LANE

4. PASSENGER AND BUS DROP-OFF AND LOADING

